

Rose-Hulman Institute of Technology

Rose-Hulman Scholar

The Rose Thorn Archive

Student Newspaper

Winter 2-9-1979

Volume 14 - Issue 15 - Friday, February 9, 1979

Rose Thorn Staff

Rose-Hulman Institute of Technology, library@rose-hulman.edu

Follow this and additional works at: <https://scholar.rose-hulman.edu/rosethorn>

Recommended Citation

Rose Thorn Staff, "Volume 14 - Issue 15 - Friday, February 9, 1979" (1979). *The Rose Thorn Archive*. 520.
<https://scholar.rose-hulman.edu/rosethorn/520>

THE MATERIAL POSTED ON THIS ROSE-HULMAN REPOSITORY IS TO BE USED FOR PRIVATE STUDY, SCHOLARSHIP, OR RESEARCH AND MAY NOT BE USED FOR ANY OTHER PURPOSE. SOME CONTENT IN THE MATERIAL POSTED ON THIS REPOSITORY MAY BE PROTECTED BY COPYRIGHT. ANYONE HAVING ACCESS TO THE MATERIAL SHOULD NOT REPRODUCE OR DISTRIBUTE BY ANY MEANS COPIES OF ANY OF THE MATERIAL OR USE THE MATERIAL FOR DIRECT OR INDIRECT COMMERCIAL ADVANTAGE WITHOUT DETERMINING THAT SUCH ACT OR ACTS WILL NOT INFRINGE THE COPYRIGHT RIGHTS OF ANY PERSON OR ENTITY. ANY REPRODUCTION OR DISTRIBUTION OF ANY MATERIAL POSTED ON THIS REPOSITORY IS AT THE SOLE RISK OF THE PARTY THAT DOES SO.

This Book is brought to you for free and open access by the Student Newspaper at Rose-Hulman Scholar. It has been accepted for inclusion in The Rose Thorn Archive by an authorized administrator of Rose-Hulman Scholar. For more information, please contact ligget@rose-hulman.edu.

Dwight Dively to attend SCONA Conference

Dwight Dively, a junior from Spokane, Washington, has been selected as this year's Rose-Hulman representative to the Student Conference on National Affairs, to be held from February 14 to 17.

Each year, one student is selected by the Humanities Department to attend the conference, with the trip being paid for by the Department's Pauley Memorial Fund.

The SCONA Conference is hosted by Texas A & M University in College Station, about 150 miles north of Houston. This year marks the 24th anniversary of the conference.

The subject for SCONA this year is "America's Economic Environment: Business, Bucks, and Bureaucracy." A group of about fifty students from schools throughout the nation will meet with national experts in this field in a series of lectures and seminars.

Some of the topics which will be covered include government regulation, productivity, international trade, inflation, and unemployment.

The section on government regulation will cover two general themes: what is the purpose of

regulation, and what are the means of regulation. Some aspects of this discussion will likely be a debate on how much regulation is necessary, the impact of taxes used as regulatory devices, the effectiveness of current rules, and the fairness of standards.

The discussion on productivity will cover three sectors of the economy: agriculture, industry, and labor. The agenda includes such topics as the proposal for an agricultural parity system, the role of taxes in stifling capital formation, and the impact of unions on the economy.

Two main issues of foreign trade policy will be discussed. First, the causes of America's current balance of trade deficit will be considered. Then, the merits of protectionism as opposed to free trade will be debated.

The final subject is the relationship between inflation and unemployment. The relative seriousness of each problem will be discussed, and various plans to respond to these difficulties will be formulated.

Besides the discussions, several social activities are planned for the delegates.

the Thorn

Vol. 14, No. 15

Rose Hulman Institute of Technology

February 9, 1979

Class of 1983 still as good

by Dwight Dively

Despite rumors to the contrary, admissions for the Class of 1983 are at levels comparable to last year's. For both quantity and quality, next year's freshmen should be about the same as the current class.

As of now, 1605 applications have been received, which is 76 fewer than last year. However, a total of 1186 have been admitted (93 above last year), and 170 men have sent in deposits, which is seven more than at this time in 1978.

The test scores and average ranking of the new entrants also continues at a high level. Median SAT scores are 540 verbal and 670 math, while 87% of the students are in the top fifth of their senior class. These scores

place Rose students in the top 2% nationally in math and the top 7% in verbal skills.

The freshman class needs to have about 350 students to begin each year. Estimating how many students to admit is a difficult job, according to Admissions Dean Duncan Murdoch. He explains that it is difficult to predict how many men will deposit and how many will change their minds later, and thus admitting the right number becomes very important.

Mr. Murdoch outlined some of the difficulties facing the admissions staff in attracting new applicants. The high cost of a private education and the difficulty of the curriculum are barriers to many students. The lack of co-education also turns

away large numbers of potential entrants.

In addition, engineering programs are available locally in all of the large cities, and hence attracting students to Terre Haute becomes difficult. Other engineering schools have also stepped up their recruiting in Indiana, which has meant more competition for Rose.

Several new techniques are being planned to enhance the recruiting effort. A new publications program of booklets on various aspects of the school is being developed, which will include such topics as computer science, placement, activities, and financial aid. A marketing program based on an informative poster is also being studied.



Chaplain Albert T. Tappman (played by John Rasp, standing) is aghast at bedroom scenes # 7 and 8 in the Rose Drama Club production of "Catch-22." Horizontally, from left, are John Paulus, Gail Cooley, Dave Wasil, Pam Gray, and Bill Sutton. The show continues tonight and tomorrow night at 8:00 P.M. in the Auditorium. (David Womble photo).

Catch-22 continues tonight

by Dave Steele

Tonight and tomorrow night Rose's Drama Club will be continuing its presentation of Joseph Heller's "Catch-22." It would be well worth anyone's time to see this play.

For those who are not familiar with the play, the story takes place at an Army Air Force base off the coast of Italy during World War II. The basic plot concerns the attempts of a bombardier named Yossarian (Gene Jones) to evade having to fly combat missions, his goal being the evasion of death.

During the course of Yossarian's adventures, the audience is constantly exposed to the insanity of war. Doctors at

the hospital take blood counts of the patients, not to diagnose them, but because "we've got to keep ourselves covered in case he dies."

Milo Minderbinder (Bill Sutton), camp mess officer and runner of the local black market syndicate, shares a piece of wisdom: "I don't feel safe among people who take my bribes. They're no better than a bunch of crooks." As the play progresses, it becomes difficult to discern who is crazy and who is not.

This play will be particularly interesting to those people who are familiar with any of the performers in it. Come and see: A totally new facet of Dave

Wasil's personality.

- A totally new facet of Dave Wasil's personality.

- John Rasp go the best two out of three rounds with 6'4" Tom Cornell.

- Gene Jones get kicked, stabbed, gouged, framed, bitten, and generally hassled.

- John Seghers die four times.

"Catch-22" represents a radical contrast to the drama, "J.B.," shown by the Drama Club in the fall. Further contrast will be provided in the spring when the Club breaks new ground in producing a musical, "The Fantastiks."

Tickets for "Catch-22" are one dollar and will be available at the door. The play starts at 8:00.

Sixteen enter RHRA Rally

by John Sparks

Sixteen entrants slipped and slid over rural Vigo County roads in the Rose-Hulman Racing Association's Winter Road Rally last Sunday.

The course, which entrants finished in two to three hours, was designed by Bob Wooden, a rallyist with extensive experience.

The rally was a timed mileage course, in which instructions were given for both route and speed. The car with the closest time to the actual theoretical time if all directions were followed correctly was the winner.

Checkpoints were included to give drivers an idea of how far off actual time they were and to keep drivers honest about not executing short-cuts.

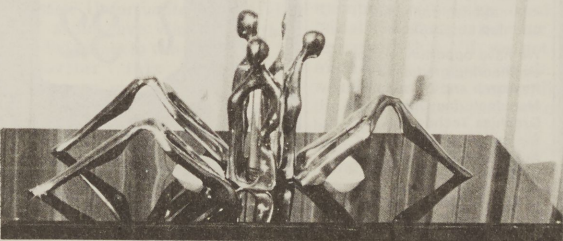
The winner, with the excellent

time difference of only 1.75 minutes, was car number fourteen, piloted by senior Bill Messer and junior Dan Mewborn. They received fifteen dollars for the win and picked up eight points toward the yearly point standings and grand championship.

Second place, and ten dollars and six points, went to car number five, driven by 1978 graduate Bucky Calhoun. Five dollars and four points were awarded to juniors Dave Steele and Bill Atterbury in car number six for third place.

The next and final rally of the series will be run during Spring Quarter as soon as the weather warms. After this rally, the 1978-79 rally champions will be chosen.

Current standings have Mewborn and Messer in first place with eight points.



There is a strange new sight by Pete and Donna Gustafson's office in the Union building. Many may have noticed the "black box" which upon further examination turns out to be a form of sculpture. The sculpture uses bronze, some plastic, and some diffused lighting to give an interesting effect. Actually, this sculpture has been around here at Rose for about a year, but it hasn't exactly been in a noticeably location. This sculpture is just one example of the art which Rose buys each year at the annual art exhibit. This particular work was done by Kenneth G. Ryden of Edwardsville, Illinois. (By Rick Warner).

How does Rose compare?

A brief survey of data gleaned from college placement catalogs reveals that while Rose-Hulman may not quite be the M.I.T. of the Midwest, it still compares favorably with almost any school in the country. The chart at right gives data on Rose and seven other highly-regarded schools of science and engineering. Rose truly does have one of the academically finest student bodies in the country.

	ROSE	M.I.T.	Cal Tech	Georgia Tech	Rice	Rensselaer	Ill. Inst. of Tech.	Purdue
Full-time undergrad enrollment	1150	4200	820	6300	2670	3600	1950	21,600
Average SAT verbal	530	658	663	528	628	580	530	501
Average SAT math	660	748	751	613	670	680	620	611
% of students in top fifth of H.S. class	83%	99%	96%	73%	95%	86%	63%	57%
% of students in top two-fifths of H.S. class	98%	100%	100%	93%	99%	98%	85%	85%
% of applicants who are accepted	83%	44%	43%	80%	53%	84%	72%	90%
% of applicants who enroll	36%	24%	23%	35%	26%	31%	37%	53%



Decent Chick of the Week: Barbi Wells

Last Friday during the SAB's presentation of the Mime and the Dancer, we neglected to thank WRTR for the use of their reel-to-reel tape player. Without their cooperation the show could not have been such a total success. Our apologies for this oversight.

Jerry Fish, Student Activities Board

COUPON

HIS N' HERS

**HAIRSTYLING WORLD
SPECIAL STUDENT PRICES**

Hairstyling \$8.00 . . . Elsewhere \$15.00

Haircut \$3.50 . . . Elsewhere \$5.00 Up

Acid Perms \$23.00 . . . Elsewhere \$35.00 Up

1350 Watt Blow Dryer \$14.00

Regularly \$29.95 — Great Buy!

5 MINUTES FROM ROSE

Stylists: Debbie Scott and Rick Johnson

905 S. 25th 232-0631

Begin Your
Engineering Career
at
**American
Can**

American Can is one of the top 100 companies in the nation. We are a diversified, international, consumer-oriented corporation.

We have opportunities for engineering graduates in Research and Development, Manufacturing Operations, Graphics Technology, Systems Engineering and Automated Manufacturing Systems.

Individualized development programs offer you an opportunity to learn through "hands on" involvement in either project engineering at one of our technical centers or in manufacturing engineering at one of our plant locations. After completing the program, your career can progress to more advanced aspects of engineering or to management.

We are interested in ME, EE, and Chem E, especially if you have courses in computer science or systems engineering.

Make a date to see our representative on campus . . . or write College Relations, 3B9, American Can Company, Greenwich, Conn. 06830.

Our representative will be at your College
February 13, 1979

**American
Can
Company**



An equal opportunity employer

Rose graduate organizes None-Of-The-Above party

by Jack File

Whether the election is between Gerald Ford and Jimmy Carter, Ronald Reagan and Jerry Brown, "Big Jim" Thompson and Teddy Kennedy, or Harold Stassen and William Jennings Bryan, Rose graduate Frederick Perry Ray is for None Of The Above.

Ray has founded the None-Of-The-Above (NOTA) party, whose platform is to give apathetic voters who aren't attracted to any particular candidate a chance to vote for "none of the above."

Ray has sent out numerous letters announcing "the formation of a political committee to eliminate the influence of special interest groups in our political system." The party aims to select one person as its candidate for president in 1980 and have him or her enter the primaries that year seeking the nomination of the major parties.

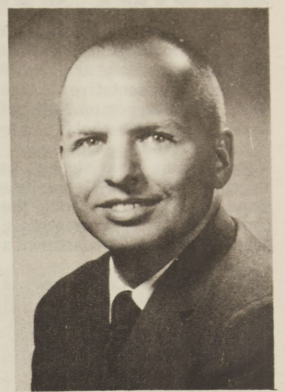
How is this candidate to be selected? By a random drawing, of course. Anyone who

contributes one dollar to the NOTA campaign automatically becomes a candidate unless the individual nominates someone else. The names of all nominees will be placed in a goldfish bowl on January 11, 1980 — Ray's birthday — and the person whose name is drawn becomes the party's candidate.

Nominees to date include such notables as Billy Carter, Richard Lugar, Senator S. I. Hayakawa of California, Senator Daniel P. Moynihan of New York, and Bella Abzug.

This isn't Ray's first foray into politics. He ran (and lost) in the May 1976 primary for the Republican nomination to the state senate. His reason for running? According to a questionnaire filled out for an Indianapolis newspaper: "personal glory."

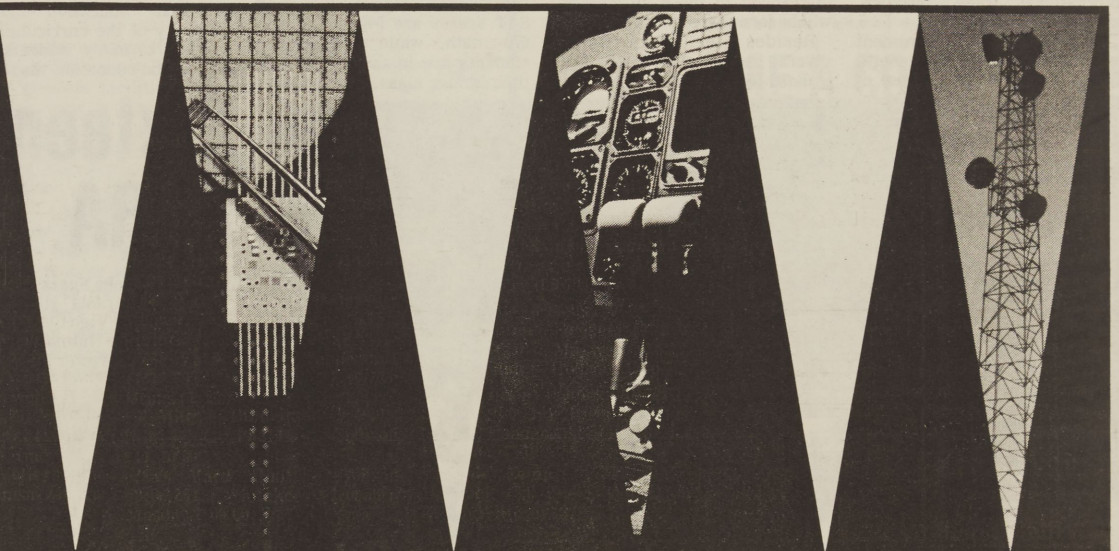
Frederick Perry Ray is a lifelong resident of Marion County. After attending Arsenic Technical High School, he entered Rose, from which he graduated in October of 1948 with a degree in mechanical



engineering.

While at Rose, Ray was active in the Sigma Nu fraternity. He is also a past president of the Indianapolis Rose Tech club. He is currently manager of J. P. Stocks Insulation Co. in Indianapolis.

Anyone wishing to contribute to the party may mail checks to Ray at 4635 Berkshire Lane, Indianapolis, IN 46226.



Accept The Rockwell Electronics Challenge!

You're about to make the most difficult move of your life...selecting your first full time job. We'd like to help you make the right decision. That's why we're putting down the cube and bringing things to a head.

When it comes to Electronics, Rockwell goes across the board. As a recognized world leader in sophisticated electronic components, products and systems, we span the globe serving a vast array of markets in avionics, telecommunications, navigation, missiles, sensors, systems integration, and electronic devices.

Rockwell offers hundreds of career choices to a number of choicé people. If you're an EE, IE, ME, Physics, Math or Computer Science major...we invite you to accept the Rockwell challenge. Contact your placement office today for an immediate interview.



Rockwell International
Electronics Operations

An Equal Opportunity Employer, m/f



Basketball slumps

Rose-Hulman's basketball team suffered two conference losses dropping one game to Southwestern at Memphis 84-94, and another to Sewanee 66-76. Rose was also slated to play Hanover last Tuesday (results unavailable).

The two conference losses drops Rose to 3-3 in the conference and all but eliminates any post season playoff possibilities. Rose's season record before the Hanover game was 11-10.

Against nationally ranked Southwestern sophomore Dave Strange was high man with 10 for 17 from the field and one freethrow for a total of 21 points. Tom Gustus was next with 13 points, all of which came in the second half.

As a team Rose shot 57.9% from the field and 54.6% from the line. Southwestern was only slightly better from the field with a 58.2% mark, but won the game with a superior 80% free throw percentage. Southwestern's 10 point margin came only from free throws since both teams each had 39 field goals.

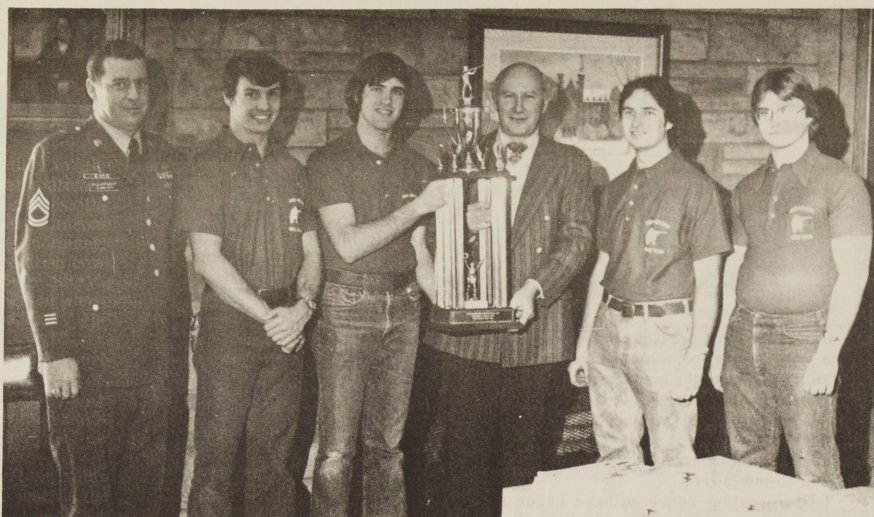
Sewanee was next after

Southwestern, and should have been an easier team to beat. The 3 day road trip evidently took its toll, as the Engineers had a one point lead at the half but went on to lose by 10. For the game Rose had three players in double figures with 20 for Strange, 18 for Jim Boerger, and 15 for Jim Baske. Starting forward Ron Dale did not perform up to usual standards since he had only four points on 10 field goal attempts.

The engineers were kept in the game by the excellent play of center Jim Boerger. Boerger was 8 for 11 from the field and 2 for 2 from the line. In addition he snagged 12 rebounds, blocked 2 shots, and made 3 assists.

Forward Dave Strange was 9 for 16 from the field and made 2 out of 3 free throws. He also had five rebounds and 5 assists. Jim Baske was 7 for 12 in field goal shooting and one for one at the line.

Rose's next home game against Illinois College is tonight at 7:30 in the fieldhouse. There will be an added attraction of the mattress piling contest at half time. Sunday's home game against Centre will also have a special attraction at halftime, the beautiful ISU Sparkettes.



The Rose-Hulman Rifle Team is shown presenting President Hulbert with the 22nd Annual Walsh Invitational Trophy. This year marked Rose-Hulman's first victory at the prestigious match held at Xavier University in Cincinnati, Ohio. Rose-Hulman's outstanding effort was also rewarded by setting another four-man record of 2,184 out of 2,400 possible points while defeating 14 other competing teams. Members shown, front left to right, are: Sergeant Robert Scheffknecht, coach; Charles Leddon; Gary Meier; Uncle Sam; James Gryga; and Bruce Ziegler.

Two new indoor records set

Tony Lenox and Dave Tappendorf broke two indoor team track records during last weekend's all-Comers meet. Tappendorf broke the 300 yard run record with a time of 32.87, breaking Mike Privette's record of 32.97. Lenox broke the 440 yard run record turning in a time of 52.23, which breaks senior Eric Clouse's record of 52.4.

Other outstanding performers included Gary Quick, Dean Billheimer, Ken Hilk, John Whitaker, Steve Wilson, Mark Mason, and Eric Vettors. Quick, a freshman, improved his long jump mark from 20' 1 3/4" to 20' 7 3/4" this week.

Billheimer, another freshman, turned in a good time in the 2-Mile (9:43.0), as did teammate Hilk (10:19.21). Whitaker, Wilson and Mason ran well in the 880 with times of 2:06.89, 2:06.26, and 2:09.00 respectively. Whitaker also ran a fine mile turning in a 4:41.0. Vettors ran well in the 1000 to finish with a 2:28.80.

Next Wednesday Rose faces a tough Evansville team in a dual meet. Evansville is very strong in the sprints but their distance and field events are much improved over last year. Coach Thompson comments, "I expect it to be a very very close meet. The Engineers will face Evansville in the fieldhouse, Wednesday at 4:30.

The complete Rose results of last Saturday's Rose All-Comers meet are:

50 Yard Dash — Tappendorf (5.72), Hancock (5.74), Hodson (5.84), Graebe (5.74).

60 Yard High Hurdles — Menser (8.00), Stroder (8.15), Phillips (8.35), Novacek (8.43).

600 Yard Run — Tappendorf (1:17.79), Schipper (1:19.72), Bruns (1:20.51).

2 Mile — Billheimer (9:43.0), Hilk (10:19.21), Collison (11:10.0).

880 Yard Run — Wilson (2:06.26), Whitaker (2:06.89), Mason (2:09.00).

300 Yard Dash — Tappendorf (32.87), Lenox (33.20), Clouse (33.56), Stroder (35.55), Synko (36.07).

1000 Yard Run — Vettors (2:28.80), Harris (2:36.64), Malone (2:46.26).

1 Mile — Whitaker (4:41.0), Billheimer (4:45.0), Foushee (4:53.0), Winslow (5:04.0), Skerbitz (5:04.0).

440 Yard Dash — Lenox (52.23), Clouse (54.33), Hancock (54.58), Phillips (55.20), Bruns (55.39), Wilson (55.39), Schipper (55.79), Synko (56.18), Renholzberger (55.71), Montgomery (55.79).

Shot Put — Fiscus (39' 4 1/2"), **High Jump** — Yeager (6' 2"), Stroder (6' 0"), Maxwell (6' 0").

Pole Vault — Hodson (12' 0").

Long Jump — Quick (20' 7 3/4"), Stroder (20' 1 3/4"), Wiltrout (19' 9 3/4"), Pendergast (19' 8 3/4"), Hodson (17' 10 3/4").

Triple Jump — (40' 3 3/4"), Hancock (39' 2 1/2"), Quick (38' 2 3/4"), Wiltrout (37' 5").



Exercise & Fitness Center
1113 Walnut Street, Terre Haute, Ind. 47807

MEN OF ROSE-HULMAN:

Take advantage of the famous Nautilus sports equipment now available in Terre Haute for your fitness needs.

• Build • Firm • Reduce • Develop Flexibility and • Cardiovascular Fitness for your favorite sport and well being!

3-30 minute sessions per week is all it takes to look and feel great!

Supervised programs by specialist
Locker and shower facilities

SPECIAL STUDENT RATES

Call for a FREE TRIAL 235-1229

ENGINEERING GRADUATES

Rockwell-Collins will be visiting your campus soon. We'd like you to discover Cedar Rapids, Iowa's second largest city and the nation's number one exporter, per capita, of goods and service.

You'll see the most sophisticated technology in the country today, developed by a leader in the field of advanced avionics design and development and one of the world's largest independent suppliers of telecommunications systems.

Currently, openings exist in:
Electrical Engineering
Mechanical Engineering
Industrial Engineering
Computer Science

Your Rockwell-Collins representative will be on campus for interviews on February 12, 13. Call your college placement office to schedule an appointment. Or . . . send your resume to:

Janyce Albert, Avionics and Missiles Group
Rockwell International, M/S 120-145 JLA
400 Collins Road NE, Cedar Rapids, IA 52406



Rockwell International

Equal Opportunity Employer M/F

Mid-season injuries hurt Rose wrestlers

Mid-season injuries are beginning to take their toll on the Engineer wrestling team. The biggest injury to the team this year has been the season long absence of a wrestler in the heavyweight category. Most recently Frank Gavrillos has gone out with an injury. Not only is the loss of Gavrillos's 8-4-1 record a blow to the team, but it has also forced the wrestlers in the three weight classes directly below his to move up a weight class.

One wrestler found the transition from the 158 pound class to the 167 pound class to be not so bad. This past week Dana Craig won two matches at that weight to bring his team leading record to 14-2. Other wrestlers who are doing quite well are

Steve Kersch with a 6-1 record at the 126 pound class and Mark Hackney with a 7-1 record at the 134 pound class.

Rose now has a two and five record in dual meets following losses to Washington of St. Louis and Milliken. Against Washington, Rose captured the 126, 134, 142, 158, and 167 pound classes. Unfortunately, a forfeit and a pin gave Washington the needed points to win.

Earlier this week the Engineers wrestled at Wabash against the hosts and Huntington College. Rose had already lost a close match to Wabash this season, but with Gavrillos out and Hackney as a maybe, Coach McGrath was unsure.

Rose's next match will be here on the 15th against DePauw at

5:00 p.m. in the E.E. Black recreation center. Coach McGrath stated that DePauw should be quite a bit tougher than they were last year, and that we will need a good lead heading into the final weight classes.

McGrath also said that this year's team has a good deal of depth for a team that only has 15 members remaining from the initial 34 that tried out. He remarked that "if we get two more years of good people like we did this year, especially in the end weight classes, we could be really tough." He was very happy with the recent turnout at home matches which have been drawing better than 100 people each. His only regret is that he could just get "all those 210 lb. studs to come out and wrestle."

Thorn selects top 20

The THORN came through last week on the Ohio State prediction. Ohio State, therefore must suffer, but Big Ten rivals Purdue and Michigan State did well for themselves. It looks as if the Big Ten will once again see two of the best teams in the country stay at home while worse schools with better records head for the NCAA. This year it will probably be Purdue and Michigan State. Michigan State should not be able to beat both Ohio State and Iowa on the road, and will probably head for the NIT, which they would win.

God lives in Terre Haute! He did, however take time off to go to Las Cruces last week. So now ISU is going to be on national television, February 25, to face Wichita State. They just might finish the season unbeaten, but unless Notre Dame loses again they will still be # 2.

So this week the THORN reached out and tabbed Duke for the # 1 spot. They won't be there next week. Odds on favorite to be there next week is UCLA. Still, any of 122 teams could hold that spot for a week.

THORN TOP 20

1. DUKE
2. NOTRE DAME
3. UCLA
4. LOUISVILLE
5. ISU
- 5a. BOB HEATON
6. LSU

7. SYRACUSE
8. NORTH CAROLINA
9. MARQUETTE
10. MICHIGAN STATE
122. NORTHWESTERN
11. TEXAS A&M
12. IOWA
13. PURDUE

14. TEMPLE
15. ARKANSAS
16. OHIO STATE
17. TEXAS
18. ALABAMA
19. MISSISSIPPI STATE
20. DETROIT

EDITORIAL

A time to act: The student body

One of the most pressing concerns of Rose-Hulman in its next era will be the composition of its student body. After the dramatic gains of the last fifteen years, we are now by any standard one of the best groups in the nation.

Whether or not this will continue depends primarily on the attitudes of our current student body. If we do not begin to make changes within ourselves, Rose may not fulfill the promise which it now offers.

Two important concerns have begun to develop within the past few years. First, the quality of entering freshmen as signified by SAT scores and class rank has begun to level off, in contrast to consistent gains each year for about a decade. Second, the number of students leaving school has increased sharply for this year's seniors and juniors as opposed to previous years.

These trends are the subject of many possible explanations. The leveling out of admissions scores was inevitable, and the new freshmen still have excellent qualifications. It does suggest, however, that further improvements will be hard to come by without substantial changes in the Rose environment.

The admissions staff already travels the country and circulates large volumes of literature. Other schools are now responding with programs of their own, and thus Rose loses some students it might otherwise have attracted. Greater effort here probably won't improve admissions too much.

Although the "declining quality" of students issue is definitely overblown, the retention issue is a very serious one. Only 68.1% of the original Class of 1979 remains far less than the record 75% graduation of last year. Even this year's juniors are already below the record.

It is possible that this is just an aberration, since the Class of 1981 still has a very high retention rate. It seems, however, that there are probably more systematic causes for the increased drop-out rate.

The Rose environment is not ideal for a large number of students. First, social activities are not too common. This is characterized by the large number of students who leave campus on weekends and the low utilization of the Union by students. Part, but not all of this problem relates to the lack of coeducation.

Second, there is substantial pressure to conform to certain norms at Rose, and many individuals can and do find this unattractive. For example, political conservatism is very much in vogue. Intense competitiveness is also expected, and those who don't meet these standards often feel isolated.

Finally, with engineering jobs so plentiful, some students feel it would be just as rewarding to go to a school where the workload isn't so great, and hence many pass over Rose.

So what can be done to improve the academic and social environment? The sad thing is that if the students really wanted it to be improved, it could have been. Despite all the complaints, there is often very little concerted effort by students to make improvements.

We need to do several things to help insure the continued quality of the student body. More of us have to get involved, whether it be in clubs, committees, or activities. We have to become more tolerant of other people and ideas, and not be so quick to condemn that which is unfamiliar. Finally, we need to develop a more constructive attitude, for criticism without proposals for solution is of little value.

We must recognize that our current student body has problems that relate to how the school runs. If we wish to attract better students and keep more of our entrants, most of the impetus for change must come from within the student body. Once that desire is evident, we may be able honestly to proclaim ourselves to be the best undergraduate engineering school in the nation.

FRANKLY SPEAKINGby phil frank

I CERTAINLY APPRECIATE
THIS CHANCE TO DISCUSS
THE PROBLEMS I'M
HAVING WITH YOUR
ANTHROPOLOGY COURSE,
PROFESSOR...



COLLEGE MEDIA SERVICES · box 4244 Berkeley, CA. 94704

Page 5

New convos to be offered

by Eric Blair

The spectacular success of The Mime and The Dancer convocation last week has prompted a major change in the planning of future convos.

"We see a strong interest in the theater arts developing among Rose students," notes SAB convocations chairman Jerry Tuna, "as evidenced by the strong interest shown in the mime's performance last week. Some students were apparently interested in the dancer, too."

One anonymous student told The Thorn, "I was particularly impressed with a couple of points in the Dancer's performance."

The first convocation affected by this change in general policy

is the Oscar Schmidt lecture on economics and free enterprise. This year, Linda Lovelace will be the featured speaker; she will talk on "The Unseen Underground Economy and Its Effects upon GNP and VD (Valuation of the Dollar?)"

Miss Lovelace is a successful businesswoman and an outspoken advocate of various aspects of our economy.

The Fine Arts series will resume next September with an original-cast production of an off-Broadway play. Negotiations are underway to bring the show "Oh, Calcutta" to Rose for a performance. "We think Rose students are ready for a thought-provoking, serious drama like

this," notes Tuna, "one that really strips away all pretence and gets down to the bare facts."

President Beauregard Sam summed up the rationale behind the new proposals best, though. "Things lakh this just go to show ya that evvun aftuh foah years at Chauncey's place, the fellers still have sum culcher. The boys still appreciate the finer things in life."

"Page 5" is a weekly feature of alleged humor and satire. It is not intended to offend anyone, as the Editor wants to graduate. Its only purpose is to create laughter (well, and to fill space), not to create controversy; we hope all readers (if there are any) read it in the spirit of fun with which it is written.

The THORN

Published weekly at
Rose-Hulman Institute of
Technology, 5500 Wa-
bash Avenue, Terre
Haute, IN 47803.

"We never give them hell. We
just tell the truth and they think
its hell." — Truman

Editor John Rasp
Assistant Editor Dwight Dively
Sports Editors Warren Pease,
Paul Wallace,
Copy Editor Peter Kehoe
Reporters Eric Dansker, Norm Frey,
John Sparks, Dave Steele,
Rick Warner, Jim Weber
Photographer David Womble
Business Manager . Chris Bodenhorn
Faculty Advisor Kent Harris
Legal Counsel Bryan & Darrow



2800 E. Wabash
232-0955

also at 100 N. 3rd

232-1102

FREE DELIVERY

Hours: 4-12 Weekdays

4-1 Saturday

5-12 Sunday

We've Targeted In On
The Best Taste in PIZZA!

HUNTER JOHN'S PIZZA

\$2
OFF

Any Large Everything

Only 1 Coupon Per Pizza
Expires Feb. 16, 1979

HUNTER JOHN'S PIZZA

\$1
OFF

Any Large Deluxe

Only 1 Coupon Per Pizza
Expires Feb. 16, 1979

HUNTER JOHN'S PIZZA

2nd ITEM
FREE

Any Size Pizza

Value 50c For Small,
75c For Large Pizzas

Only 1 Coupon Per Pizza
Expires Feb. 16, 1979