

Fall 1970

Volume X - Issue 5 - Fall, 1970

Echoes Staff

Follow this and additional works at: https://scholar.rose-hulman.edu/rose_echoes

Recommended Citation

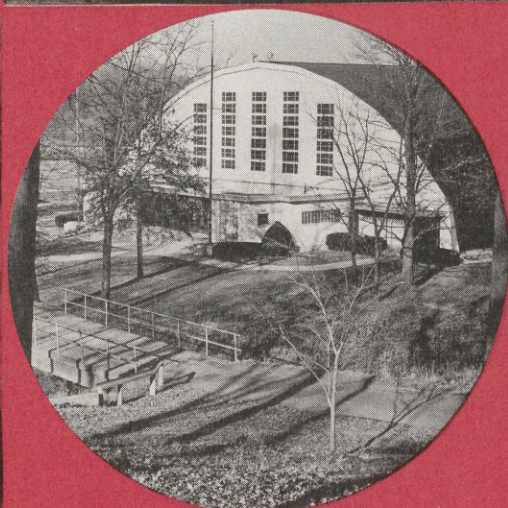
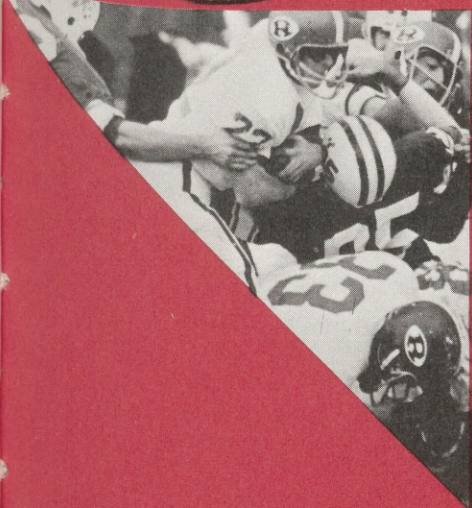
Staff, Echoes, "Volume X - Issue 5 - Fall, 1970" (1970). *Rose Echoes*. 113.
https://scholar.rose-hulman.edu/rose_echoes/113

This Book is brought to you for free and open access by the Other Institute Publications at Rose-Hulman Scholar. It has been accepted for inclusion in Rose Echoes by an authorized administrator of Rose-Hulman Scholar. For more information, please contact weir1@rose-hulman.edu.

ECHOES

ROSE POLYTECHNIC INSTITUTE

FALL '70



ROSE ECHOES

Alumni Magazine

Fall, 1970

Vol. X, No. 5

ROSE ALUMNI ASSOCIATION

EXECUTIVE OFFICERS 1969-70

Robert T. Mees, '31, President

John T. Newlin, Feb. '43, Vice President

Anthony G. Blake, '31, Sec.-Treas.

CHAIRMEN OF OPERATING COMMITTEES

1969-70

Homecoming Richard L. Brown '59

Fund Raising William R. Gray, Aug. '50

Student Recruitment Fred W. Goetsch '57

Rose Tech Clubs Gene L. Mrava '57

Awards and Recognition
William Nicewanger '63

Continuing Education
Carl R. Wischmeyer '37

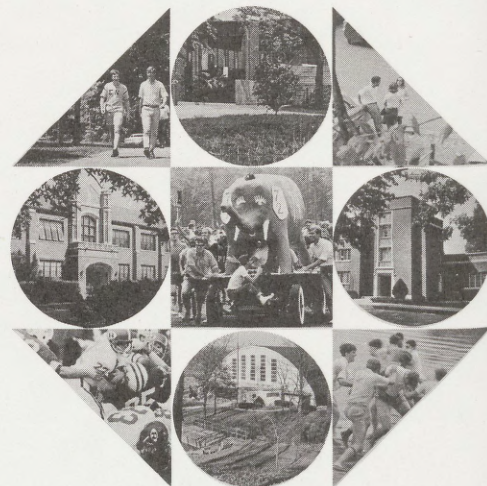
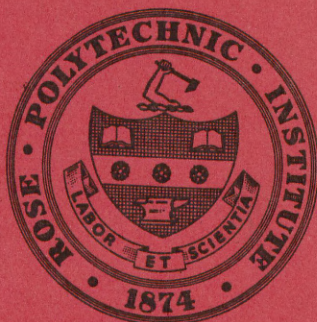
ALUMNI MEMBERS OF THE BOARD OF MANAGERS

Russell E. Archer, Sr., '34
1966 to Annual Meeting 1970

Fred W. Garry April '51
1968 to Annual Meeting 1972

ROSE ALUMNI OFFICE

Terrence R. Barton Alumni Director
W. Kent Harris Editor, The Echoes



In This Issue

On to the Centennial	Page 1
Learning Resources Center	2
Across the Campus	4
Faculty	6
Civil Engineering Today	8
A Day With the Pros	10
Class Notes	12
In Memoriam	19
The Appendix	
1969-70 Report of Annual Giving	

The Cover

The cover of **The Echoes** is an overall photographic view of Rose Polytechnic in the Fall as set to the theme of the geometric rose, a logotype used in publications of the Institute. Starting at twelve o'clock and moving clockwise are Hulman Union, yes, girls do come on campus, Bauer-Sames-Bogart Hall, a laking, Shook Memorial Fieldhouse, hard-hitting football at Phil Brown Field, the Main Building at sunset, and a stroll across the campus. Rosie and the freshmen take center stage.

Published January, March, May, July, September, and November by Rose Polytechnic Institute at Terre Haute, Ind. 47803. Second class postage paid at Terre Haute, Ind. Acceptance for mailing at special rate of postage provided for in section 1103, Act of October 3, 1917, authorized December 13, 1918.



On to the Centennial

Now that the class of 1974 has been properly introduced to the necessary evils of freshman calculus, chemistry and physics, it is time to start talking about the Centennial.

For nearly 100 years Rose Polytechnic Institute has been recognized as one of the nation's leaders in privately supported undergraduate science and engineering education, but what does the future—particularly the second century beginning in 1974—hold for Rose?

What must Rose do if it is to successfully compete with the large state universities and their growing urban satellites? What changes are contemplated in science and engineering curricula?

What new facilities are planned for Rose. . . and what will these facilities cost?

In order to look at such a broad range of questions The Echoes talked to Rose President John A. Logan and found that definite plans are underway for the Centennial. These plans range from the successful completion of a \$17 million Centennial Development Program to the commissioning of Prof. John L. Bloxsome to write the history of the school.

Basically, support of the system Rose has so successfully operated for nearly a century is the key to the future of the college. An encouraging note was the official announcement that Rose has completed the first half of its Centennial

Development Program as of August 31. But as in football, the hardest yards are those at the end of a drive; Rose must maintain and, in fact, increase its support from alumni, friends, corporations and foundations if the school is to continue to be a winner.

"This year just ended has been one of the best in the history of fund raising at the Institute. At a time when independent colleges throughout the nation have been faced with the problem of decreased financial support, Rose has reversed the trend and has attained a return in dollars second only to the first year of our Centennial fund program," said Dr. Logan in making the announce-



ment that Rose has reached the midpoint of the campaign.

"This record is especially encouraging, expressing as it does confidence in Rose Polytechnic and its plans and programs for the future.

"With enrollment having reached the new level of 1,050 students established some five years ago by the Board of Managers, the Institute will be concentrating during the remainder of the Centennial program in improving its physical facilities," Dr. Logan continued.

"Up until now, primary emphasis has been given to faculty improvement, including the estab-

lishment of competitive salaries. Now that we are nationally competitive in this area, every effort will be made to improve our physical plant so that it will compare favorably with any college of science and engineering in the United States."

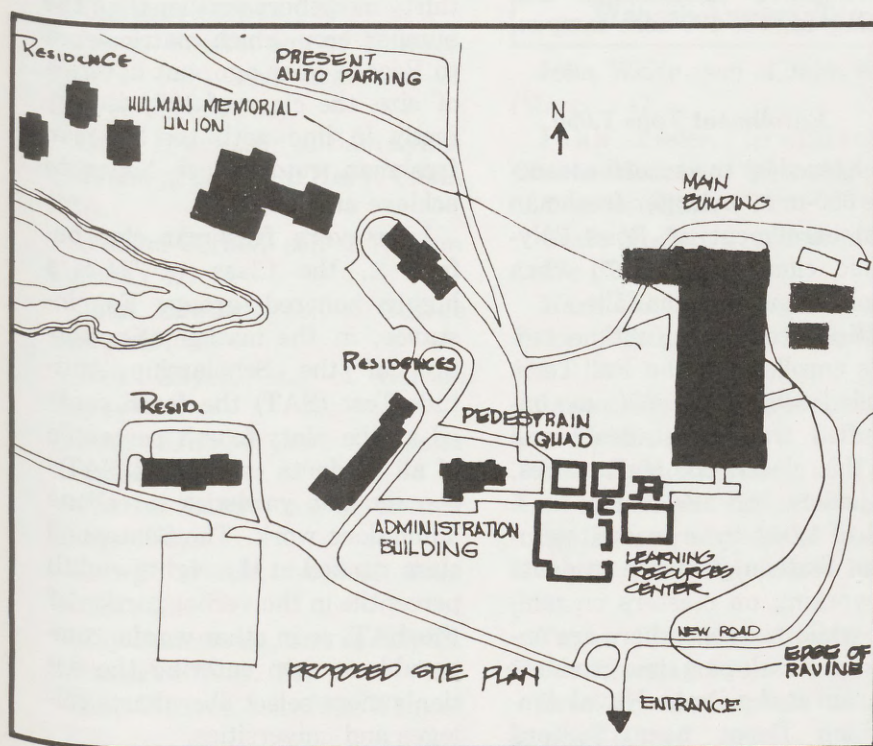
The first such capital improvement project is the \$2.4 million Learning Resources Center, a complex to be located west of the Main Building which will house a new kind of library, expanded computer facility and multi-purpose information center, an auditorium and special function classrooms.

In developing the architect's program for this project, Ewing Miller Associates, Inc., of Terre Haute, started with Rose educational goals and objectives and the fine student - faculty rapport and designed the Learning Resources Center as a new focal point for the campus.

The architects point out that the center should provide for, stimulate, and actually be a learning experience. In an attempt to accomplish this end, they chose to locate this facility near the intersection of the major natural student paths on campus to increase the student activity within the space, thereby, increasing its usability (See diagram).

It is felt that if the use of a "path" between the various modules of the new Learning Center

Learning Center



could create a campus main street, the exchange of information could be increased and the function of the learning center could be magnified. Moreover, this siting would provide a pedestrian quad in the area between the Learning Center, Main Building and the recently completed Classroom Building.

Busy as "The Path" might be, the Learning Center also would provide areas "just off the beaten path" where the students and faculty may work as individuals or small groups. Conventional stacks and long oak reading tables are out in the new library. Rather, use of scattered book shelves and closely related reading tables and private study consoles (carrels) are incorporated in the design.

Second on the list of priorities of Phase II of the Centennial Development Program is the \$1.5 million recreation building, a facility designed to better meet the recreational needs of a student body of more than 1,000 very active young men.

The Recreation Center, which will be sited east of Shook Memorial Fieldhouse, will house a swimming pool, intramural basketball, volleyball and handball courts, wrestling and weight rooms and other undesignated areas for general activities.

The need for such a facility is ever present today. Coach Jim Carr, who coordinates a fine intramural program which involves more than seventy-five per cent of the student body, notes that at the present time no fewer than twenty-three flag football teams

Student Activity Points Up Need For 'Rec' Center

are "letting off steam" at every available square foot of the existing outdoor intramural fields. Many others are participating in intramural tennis and golf tournaments which have been underway since shortly after school started.

The real pinch, however, will come in the next few weeks when intramurals move indoors and basketball--that Hoosier mania--dominates the recreational scene. Last year, forty intramural basketball teams and fifteen volleyball teams vied for a spot in Shook Memorial Fieldhouse. Varsity basketball practice and home games cut heavily into use of the floored section of the fieldhouse, not to speak of special convocations, final examinations, etc.



See Complete Homecoming '70 Coverage in Winter Echoes

Other capital improvements planned by the college include \$1 million in continued improvement of the Main Building, purchase of \$700,000 in equipment, and creation of a peripheral road system and improve landscaping and lighting for the 130-acre campus.

Enrollment Tops 1,050

Bolstered by the second consecutive 350-man or larger freshman class, enrollment at Rose Polytechnic climbed to 1,076 when school commenced this fall.

Official count of fulltime students enrolled for the Fall Term included 348 freshmen (some unclassified transfer students will join this class), 303 sophomores, 204 juniors and 187 seniors for a total of 1,042 undergraduate students. Sixteen graduate students are working on masters on campus, while sixteen others are enrolled in Rose's part time graduate program at the Crane Naval Ammunition Depot near Bedford

(First graduates of this four-year-old program completed the requirements for a Master of Science in Engineering last June).

The freshman class, or the Centennial Class of 1974, is nearly thirty members smaller than the bumper crop which matriculated to Rose a year ago, but in terms of size the class of 1974 is perfectly in line with the 350-man freshman cutoff Rose hopes to achieve annually.

Like every freshman class before it, the Class of '74 is a highly honored group. For instance, in the mathematics portion of the Scholarship Aptitude Test (SAT) the frosh ranked at the ninety-fourth percentile of all students taking the SAT--the common yardstick in college admissions work. The Centennial class ranked at the eighty-eighth percentile in the verbal portion of the SAT, or in other words, comparable to men entering the nation's more select liberal arts colleges and universities.

Other credentials worthy of mention include the seventeen National Merit Scholars (eight other were semifinalists), the eleven frosh who won full Army ROTC scholarships and the 160 men who were designated as "Hoosier Scholars."

Frosh Legacies

A number of Rose men will be getting "both sides of the story" from Rose Polytechnic for the next four years. They, of course, will get the line from The Echoes and other correspondence with the school, but also will have a direct pipeline from a son, grandson, brother, etc.,

For when freshman arrived this fall, a record number of legacies enrolled at Rose. Forty-two strong, the legacies include three third generation Rose men and eight others whose fathers had preceded them as graduates of the college.

The legacies:

Keith Corban, son of Frederick Corban ('54,) and grandson of Clarence Corban ('26).

James Freers, son of Howard Freers ('48) and grandson of George Freers ('08).

Larry Lynch, son of Sam Lynch ('50) and grandson of Harve Chinn ('23).

William Cornell, son of William Cornell ('47)

John Edwards, son of George Edwards ('43)

Bob Hayes, son of Gordon Hayes ('49)

John Krampe, son of John Krampe ('47).

Charles Lange, son of Ronald Lange ('50).

George Pirtle, son of John Pirtle ('52).

Ray Summerlot, son of Ray D. Summerlot (Aug, '50)

Tom Weaver, son of Joe Weaver ('35)

Bloxsome To Write Rose History

Dr. John L. Bloxsome, retired Rose Polytechnic vice president and a member of the Rose family for 41 years at the time of his retirement in September, has been commissioned to collect information and write a history of the school's first 100 years for publication in a Centennial Volume in 1974.

Writing such a history, especially in view of the fact that Rose has not kept an archives, is a difficult task. Hence, Prof. Bloxsome has a writing assignment for Rose men of all ages. (It will be more fun than "Letters and Reports" or the fabled "Eco-Geco").

THE ASSIGNMENT: Please provide Prof. Bloxsome with any historical information, human interest stories, news clippings, pictures, etc., you feel may be of some value in compiling the history of "Dear Old Rose."

DUE DATE: As quickly as possible . . . late papers will NOT be accepted!

Although the early history of the college is fairly well documented in a Memorial Volume by Carl Leo Mees published in 1911, Prof. Bloxsome needs accounts from every decade, especially information concerning operation of the school at the former location at Thirteenth and Locust streets in Terre Haute.

Material such as old issues of The Technic, The Modulus or photographs will be carefully catalogued and kept in safe keeping. Materials will be returned to the lender upon request.

Please mail such material to: Dr. John L. Bloxsome, Centennial Historian, Rose Polytechnic Institute, 5500 Wabash Avenue, Terre Haute, Indiana 47803.

John White, son of John White (March, '47)

John Kibler, grandson of Charles Modesitt ('06) and brother of Charles Kibler ('71).

Grafe Nesbitt, grandson of Paul Grafe ('20).

Mark Dunlap, nephew of Paul Price ('35) and Carl Price (Feb., '43).

James Gilman, nephew of William McKee ('58).

Ken Kahl, nephew of Frank Kahl and Robert Kahl ('49).

Joe Kelptz, nephew of Charles Kleptz ('58) and James Kleptz ('59).

Terry Kluesing, brother of Dales Kluesing ('70).

Brad Lynch, nephew of Sam Lynch ('50).

James Lynn, brother of John Lynn ('66) and Larry Lynn ('69).

Rex Mook, brother of James Mook ('53) and Dan Mook ('59).

Tom Rodgers, nephew of Charles Meurer ('42) and Malcolm Meurer (July, '49).

Jack Schneider, brother of Joe Schneider ('69).

Steve Sibrel, brother of William Sibrel ('67).

Larry Smith, brother of Carl Smith ('67) and nephew of Robert Anderson ('42).

Ronald Tatlock, nephew of Cyrus Cox (July, '49).

William Torrence, brother of Bob Torrence ('70).

Norm Zaenglein, brother of Ed and Mark Zaenglein ('66).

\$1.2 Million in Aid

When the students returned to the campus this fall they brought with them a record \$1.2 million in financial aid.

Nearly seventy percent, or more than 800 of the 1,042 undergraduates, are receiving financial aid of some kind, with about forty percent of their student costs being supplied through assistance programs. A million dollars in financial aid sounds like a lot of money. . . and it is. But it still is not enough to compete with other top drawer independent colleges or the larger universities for the kind of man suited for the academic program at Rose.

Rose, which considers the total student cost, including tuition, room and board and all extra expenses at \$3,400 a year, awarded \$650,000 in grants, another \$500,000 in loans, and \$50,000 in part time work on campus.

Faculty Now 71 Strong

Eight new faculty members assumed teaching positions and two others returned to the campus following educational leaves this fall, raising to 71 the number of full-time teaching faculty at Rose.

Dr. Michael J. Moloney, who taught physics at Rose from 1966 to 1968, rejoined the faculty as acting chairman and associate professor of physics after two years at Lafayette College, Easton, Pa. He succeeded Dr. Ralph A. Llewellyn ('55), who assumed the physics chairmanship at Indiana State University.

Other familiar faces back from educational leaves are Henry Winston, associate professor of electrical engineering who recently



Irvin P. Hooper, professor of mechanical and aerospace engineering, works with students in the new mechanical and aerospace engineering self-study laboratory. When completed this laboratory planned as a part of Rose's COSIP program will include experiments in more than a dozen areas in addition to a mini M.E.-Aero library.

completed the work for a Ph.D. in electrical engineering at the University of Santa Clara in California, and Peter F. Parshall, assistant professor of humanities who is working toward a Ph.D. in literature at Indiana University.

New Faces

Dr. Teruo (Terry) Ishihara joined the mechanical and aerospace engineering department as an associate professor after four years at the University of Missouri at Columbia. Other teaching experience has been gained at Monterey Peninsula College and San Jose City College from 1955 through 1961.

Dr. Ishihara received a B.S. in mechanical engineering at

Washington State University, Pullman, in 1949. Following graduation, he turned to mathematics teaching and earned teacher certification at the University of California-Berkeley in 1952 and masters in applied mathematics from San Jose State in 1958. He since has earned the M.S. and Ph.D. (1969) in mechanical engineering at the University of Arizona.

A native of New Mexico, Dr. Glenn Baca joined the chemistry department as an assistant professor. He earned the B.S., M.S. and Ph.D. in chemistry at New Mexico State University, Las Cruces. His previous teaching experience has come at New Mexico State (1965-68), Rose Polytechnic (1968-69), and as assistant professor of chemistry at Mercer County Community College (Trenton, N.J.) last year.

Raymond Beasley, a Ph.D. candidate in mathematics at the University of Illinois, is new in mathe-

Faculty

matics. A native of Oklahoma, he earned a B.A. at Phillips University, Enid, Okla., in 1960 and a masters at the university the following year. He taught at Madison College, Harrisonburg, Va., before moving to the University of Illinois where he has taught part time and studied the last four years.

Alan H. Johnson, ('61, E.E.) a Ph.D. candidate in guidance and psychological services at Indiana State University, joined the department of humanities and social science as an assistant professor. After receiving a B.S. from Rose, he earned a masters in psychology at Indiana State in 1963. He studied two years at Union Theological Seminary in New York City before returning to I.S.U. in 1966 as a Doctoral Fellow and teaching assistant.

In addition to work at I.S.U., Johnson studied at the internationally-known C.G. Jung Institute for Psychology in Zurich, Switzerland, in 1967-68.

Robert F. Stalcup, a postgraduate student in life sciences at Indiana State University, came to the biological engineering department as an instructor. A native of Jasonville, Ind., he received a B.S. in biology and chemistry from Indiana State in 1966, and has since done work in biochemistry and life sciences at Indiana University and I.S.U.

The U.S. Army R.O.T.C. detachment at Rose, which administers officer training programs for Rose, I.S.U. and Vincennes University, gained the services of two officers assigned as assistant professors of military science. New to the detachment are Maj. Philip J. Galanti, a 1962 graduate of the U.S. Military Academy, who since has earned a masters in international relations from American University, Boston, and Capt. Charles A.W. Hines, a 1966 West Point graduate in general engineering.

New COSIP Head

Dr. Charles C. Rogers, former chairman of electrical engineering and a member of the faculty since 1961, has been named to head Rose's College Science Improvement Program (COSIP).

He succeeds Dr. Sam Hite, chairman of chemical engineering, and will be responsible for administering the \$180,000 federally-supported program aimed at exploring new teaching techniques, etc., with an eye to improving the learning process in engineering and science. The three-year program runs through July, 1972.

The program is broken down into five areas, including 1) improvement of teaching effectiveness through improved methodology, 2) improved techniques and better use of visual aids, and 3) self-study laboratories. Fourth and fifth priorities are the establishment of a link with the state closed circuit television network and the establishment of communications with college and university centers developing new approaches to teaching.

Continuing Education

Rose embarked on a continuing education program in October and has forwarded plans for short

courses in computer utilization, programming, environmental engineering and production methods and controls for technically oriented personnel in the Terre Haute area during the 1970-71 academic year.

Irvin P. Hooper, professor of mechanical and aerospace engineering who has served the college as a teacher, department chairman and business manager, is directing the program which was kicked off by a two night short course conducted by Prof. Herman A. Moench ('29), entitled "Computer Utilization for Industry." The course drew an initial group of 25 engineers and scientists with undergraduate backgrounds at no fewer than ten colleges and universities.

Next up is Dr. Darrell E. Cross (Feb., '43) with a program on computer programming, followed by Dr. Robert M. Arthur on environmental engineering and Dr. Sam C. Hite on process control, to mention a few.

In making the announcement of the new program and its director, Dr. James B. Matthews, Dean of the Faculty, pointed out that a survey of local industry over the summer led to launching of the program.

CONTINUING EDUCATION (Tentative Schedule)

Computer Utilization in Industry	Oct. 12 & 19 1970	4 hours
Programming FORTRAN	Nov.-Dec. 1970	20 hours
P.E. Review	Jan. 25-April 5	22 hours
EIT Review	Jan. 26-April 16	10 hours
Environmental Engineering	Jan. 6-Jan. 27	8 hours
Production Methods & Controls	Feb. 2-Feb. 24	8 hours
Analog Computers	March 1-March 29	10 hours
Stress Analysis and Measuring Methods	April 6-May 4	10 hours
Mathematics for Engineers		
Part I Analytical Geometry	Feb. 3-Feb. 24	8 hours
Part II Integral and Differential Calculus	March 2-March 30	10 hours
Part III Differential Equations	April 7-May 4	10 hours
Chemical Engineering--Process Control		

C. E. Places Student In 'Real Life' Situation

Civil engineering, the granddaddy of all engineering disciplines, long has aspired to educate men who would concentrate their efforts toward engineering for the benefit of man. Its graduates have taken their place in positions ranging from the earthiest of practical engineers to the environmental specialists of the space program. A survey of Rose C.E. graduates, for example, vividly depicts the diversity of the civil engineer.

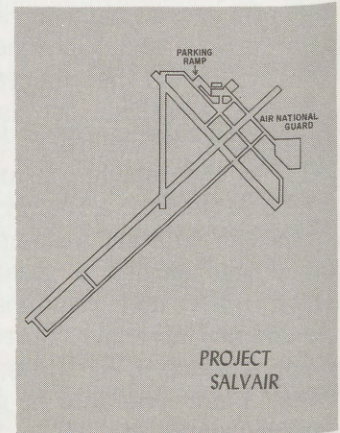
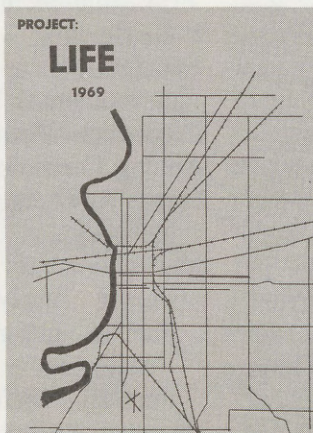
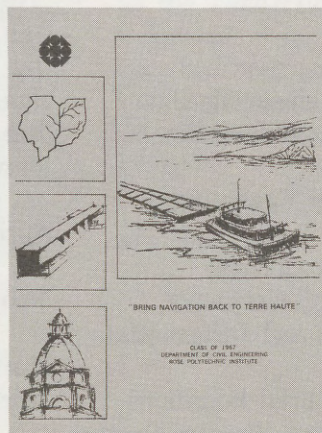
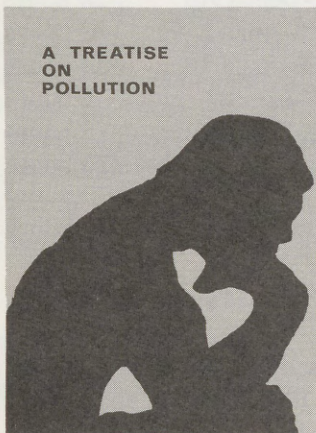
Since a civil engineer, first of all, serves mankind on a broad scale and seeks to understand the governing factors in man's motivational structure, it is reasonable to assume that the domain of C.E. practice consists of all space which man shall choose to inhabit. Today's complex society and the pressing need for better transportation, better housing, better allocation of natural resources, cleaner air and water point up the demand for involvement on the part of the engineer unparalleled at no other time in the history of the profession.

At Rose, the particular ideals set out in the civil engineering curriculum are based on three areas: 1) achieving technical competence through topic-oriented courses such as structures, me-

chanics and environmental health engineering; 2) studying man through the humanities and social sciences; and 3) uniting the two through an innovative engineering design series aimed at providing a "real life" experience for tomorrow's civil engineer.

In achieving the third objective, Rose has come up with a new wrinkle in engineering education—one which places the civil engineering student in the role of an engineer as early as his second year of college.

For each of the last five years the students have formed a mock consulting engineering firm for the purpose of analyzing the kinds of problems they will be undertaking as professional engineers. Subjects as diverse as feasibility of navigation on the Wabash River, airport and hospital facilities, urban development and pollution problems of Terre Haute and Vigo County have been undertaken by the group, and for the most part, reports such as **Project Salvair** (1966), **Project: LIFE** (1969) and **Treatise on Pollution** (1970) have been professionally done and have received plaudits from the news media and professional personnel in the area who participated with the students on the reports. In short, the reports were more than



lip service, and were carefully labled as an academic exercise on the part of the group.

Dr. Dennis H. Sapp, associate professor and chairman of civil engineering, launched the "mock engineering firm" approach to the teaching-learning situation as a vehicle for introducing civil engineering seniors (C.E. Design and Synthesis 422) to the design area, decision making and legal constraints, etc., of civil engineering practice. Results of the first three projects were so encouraging that the sophomore design course joined the mock firm as junior consulting engineers last year, and it is now possible for a C.E. major to elect to participate in the project his sophomore, junior and senior years.

This year the C.E. project has taken on new dimensions. Aided by a \$7,500 federal grant under Title I-Higher Education Act of 1965, the project encompasses what Dr. Sapp describes as "A Plan for Community - Academic Interaction."

"The study will be a continuing effort to describe and note the inter-relationships among the various activities which together form the complete 'civil system' in the Terre Haute-Vigo County area," explains Dr. Sapp. "To be sure, the local area is itself only a part of the larger global system of the state, nation and the world.

"As we now envision the first year of our project, it appears that it will be spent primarily in a fact-finding venture with an eye out for existing strengths and weaknesses. . . It is our hope that during the third quarter we will be in a position to begin preparing descriptive literature concerning the various parts of the system."

Fall, 1970

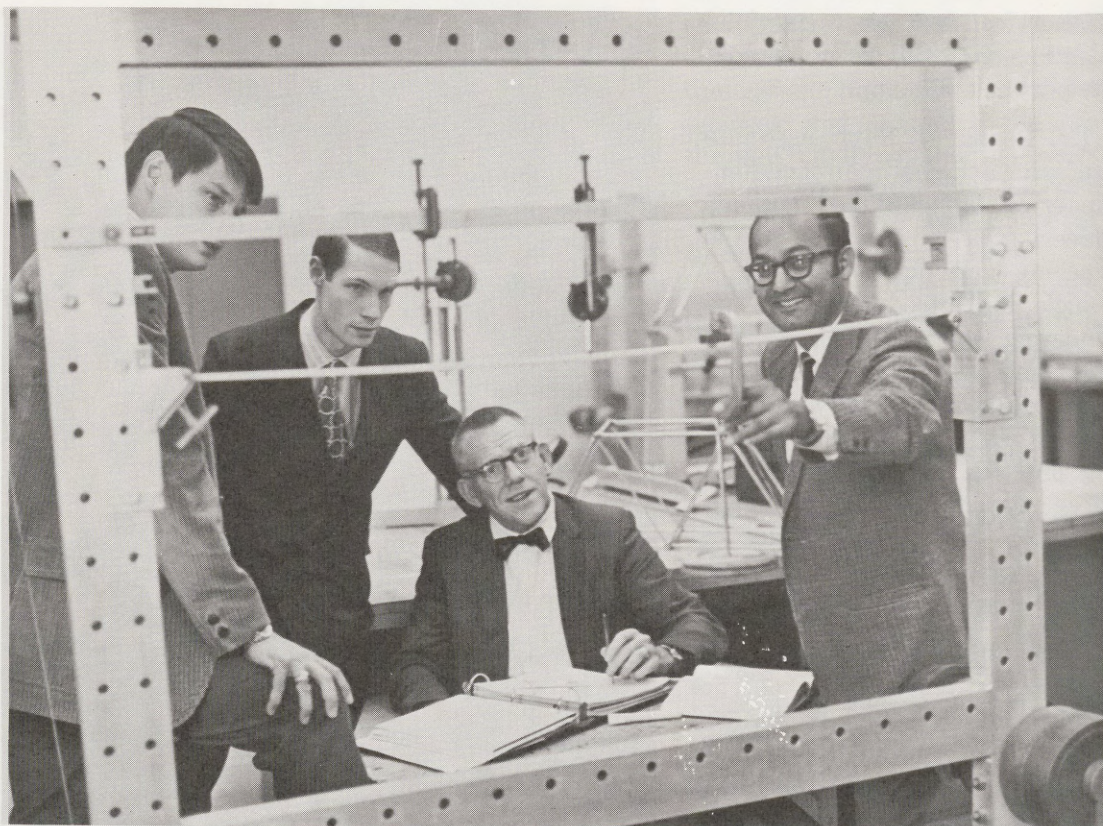


Dr. Dennis H. Sapp (right), chairman of civil engineering and author of the "real life situation" approaches to education such as Salvair, Project: LIFE and others, chats with assistant professor Rex D. Robinson ('66, C. E.) and Mrs. Robinson in the Community-Academic Interaction office. Professor Robinson oversees the students in the project, and has enlisted his wife, the former Susan Joseph, to handle the mounds of paper work created by the program.

The civil engineering seniors are providing the leadership for the mock firm, while sophomores and juniors are devoting approximately one-fourth of their time in required design courses to work with the Community-Academic Interaction Program. An effort also is being made to include students in other disciplines at Rose, as well

as students and faculty at Indiana State University and St. Mary-of-the-Woods College, hence, making the program truly an exercise in community-academic interaction.

Funding of the project will allow students to bring special consultants and experts to the campus as the group works with data collected for the program. Then, af-



Structures, mechanics, and soils testing are still a very essential part of civil engineering. Here the civil engineering faculty is shown in a structures laboratory with beam-testing equipment. Faculty members, left to right, are Jeffrey J. Lew ('63, C. E.), Rex D. Robinson ('66, C. E.), Dr. Dennis H. Sapp, chairman, and Dr. Cecil T. Lobo.

ter analyzing the data and comparing their conclusions with those of the faculty participants, local leaders and the consultants, the firm hopes to prepare newsletters and other informational materials about the project which very well could prove to be of long-range benefit to the community.

The civil engineering faculty is comprised of Dr. Sapp, Dr. Cecil T. Lobo, and professors Rex D. Robinson ('66, C.E.) and Jeffrey J. Lew ('63, C.E.). A structural engineer, Dr. Sapp earned the B.S., M.S. and Ph.D. at the University of Illinois, and succeeded Prof. Edward A. MacLean as department chairman in 1962.

A native of India, Dr. Lobo earned the B.E. at the University of Gujarat, a M.S. at the

University of Notre Dame and a Ph.D. from Purdue University. He joined the Rose faculty in 1963 following completion of the Ph.D.

Robinson, who joined the faculty as an instructor in 1968, was promoted to assistant professor last spring. He holds the B.S. and M.S. in civil engineering from Rose, and last year directed the group which worked on the project entitled **Treatise on Pollution**.

Lew, who joined the faculty in 1969, earned a masters civil engineering at Purdue in 1968. Prior to joining the faculty he worked in the Vigo County Area Planning Commission.

Facilities have never been better in civil engineering. Dr. Lobo is operating out of a new soils laboratory located in the mechanical-civil engineering annex east of

the Main Building. The move was brought about by the expansion of the biological engineering department (former C.E. faculty member Dr. Robert Arthur is chairman of this three-year-old department) into the area formerly occupied by the soils lab.

Structural and general purpose civil engineering laboratories received a facelifting over the summer as remodeling of the Main Building continues. Occupancy of the new classroom building in December will provide additional space for existing departments, including civil engineering.

At the present time 27 seniors, 25 juniors and 26 sophomores are pursuing civil engineering at Rose --engineering for the benefit of man.

Try to picture yourself in one of the nation's football stadiums on a Sunday afternoon this fall. The Packers and Lions, or the Jets and Chiefs, or the Rams and somebody else are about to clash in the game of the week. Eighty thousand "fired up" fans are on hand for the game; millions more are glued to their television sets at home.

But wait just a minute. . . Before you break open that steaming hot thermos and tuck your stadium blanket around your leg, let's get one thing straight. You're not in the stands; you're on the field. In fact, you are the back judge and it is your responsibility to call the long running, passing and kicking plays. All afternoon.

Bill Kerstermeier ('51, M.E.) knows the feeling well. He currently is in his sophomore year as a pro football official. How does he like his weekend moonlighting? To put it in Bill's words: "It's a lot of fun."

A product engineer at the Brake and Steering Division of Bendix Corporation at South Bend, Ind., Kerstermeier broke into pro football officiating with the American Football League in 1969 after a dozen or so years as a high school and college football official. This season he's working both National and American conference games by virtue of the pro football merger, and when the season is completed in January, Bill will have worked before crowds in Cincinnati, Buffalo, Pittsburgh, Baltimore, Kansas City, Atlanta and Miami.

Officiating a pro football game is much different than calling a high school game or a contest such as the annual Notre Dame-Purdue freshman game which Bill used as stepping stones for his current assignment. The major difference, accord-

ing to Kerstermeier, is his preparation for each game.

"Of course, you keep yourself in top physical shape for officiating," says Bill, "You have to stay up with them on long plays, otherwise you just can't do the job."

"But equally important is your knowledge of the rule book," he continues, "You should know each rule word for word. . . there's no time to stop and consult a rule book during a game. And it's a lot easier to explain your call to a coach or player if you cite the infraction and spell it out to the letter."

Bill ran a mile a day for some time in order to get into shape for big time officiating, and notes that he sits down with his rule book for a few minutes three or four evenings a week.

In keeping current with the teams he will be seeking from week to week, Bill and the other five officials (six officials are assigned as a unit and work together each weekend during the season) view films of the teams before each game. Afterwards they are critiqued by the league office both as individuals and as a unit, a procedure which the National Football League credits as a major factor in the excellent officiating it receives from its 90-man corps of top football officials.

Bill wears uniform number 76, and at 6-6 and well over 200 pounds is an easy man to spot as he runs alongside and scrambles to stay out of the way of the bruising, hard-driving pros. Watch him in action sometime and you'll see why he says it's so much fun.

Pro! Bill Kerstermeier ('51) Makes It As Grid Official

Class Notes

John C. Dalrymple ['33] Retires; 1st Rose Man to Become Army General

Major General John C. Dalrymple, the first graduate of Rose Polytechnic Institute to become a general officer, has retired after 29 years of service in the United States Army.

At a retirement ceremony at Fort Belvoir, Virginia, on August 31 he was presented the Distinguished Service Medal for outstanding performance of duty from June, 1960, to September, 1970, as senior engineer adviser to the Republic of Korea Army, Director of Installations, Office of the Deputy Chief of Staff for Logistics, Department of Army, and other assignments here and abroad.

General Dalrymple, a native of Brazil, Indiana, was commissioned a Second Lieutenant of Engineers in the U.S. Army Reserve upon graduation. He began his active military career in March, 1941.

He led the 82nd Engineers into Normandy in June, 1944, and in 1945 led the 117th Engineer Combat Group in the historic crossing of the Rhine.

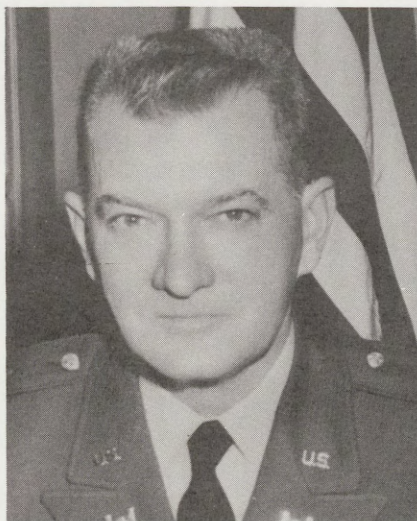
At the end of hostilities in Europe, General Dalrymple served at the Pentagon in the Army Ground Forces Headquarters.

Commissioned in the Regular Army in 1946, he served as Commanding Officer of the First Engineer Combat Battalion, First Infantry Division, and later as the assistant deputy chief of staff for operation, European command.

He was promoted to brigadier general on December 30, 1962, and in June, 1965, became the director of military construction, office of the chief of engineers, Department of Army, Washington, D.C.

General Dalrymple subsequently became director of installations in 1966, and was promoted to major general on August 1, 1968.

General Dalrymple, who received his B.S. in electrical engineering at Rose, continued his education while in the Army and in 1948 was awarded an M.S. in civil engineering from Iowa College at Ames. He also is a graduate of the Command and General Staff College, Fort Leavenworth, Kansas; the Armed Forces Staff College, Norfolk, Virginia; and the National War College, Fort McNair, Washington, D.C.



Gen. John C. Dalrymple

'20

CLIFT W. YOUNG (Ch.E.), who prior to his retirement was vice president and general manager of General Electric Company's lamp manufacturing division in South America, dropped The Echoes a line Sept. 21 to report an upcoming move from McAllen, Texas, to Fort Myers, Fla. His new address is 2828 Jackson Street, Villa Capri Apartment C-2, Fort Myers, Fla. 33901.

Within the next few days alumni of Rose will receive a new Alumni Directory. This book will include the name of each Rose alumnus, his major, address, additional degrees, and job title at the time of the printing in mid-October.

Based on the well-established 25 per cent annual turnover in our alumni mailing list, we know some listings will be inaccurate. Please call these changes and additional class note material to our attention at the earliest possible date.

'26

MAX SHERWOOD (C.E.) retired June 1 as sales engineer for Osborn Manufacturing Company. He had been with the Cleveland, Ohio based manufacturer of metal finishing and foundry equipment for more than 20 years, having been assigned to the Chicago-Milwaukee area. His current address is 524 La Belle Avenue, Oconomowoc, Wis. 53066.

'28

ALEXANDER BABILLIS (M.E.), who retired from General Electric Company in 1968 after 30 years with the company, is in his second year of a new career—that of director of the Berkshire Medical Center in Pittsfield, Mass. Babillis, who joined the BMC after a "retirement" of one month, is responsible for the operation of two hospitals in Pittsfield. Originally hired as project manager and the task of planning renovation and new construction, he later was named to the administrator's position he agreed to fill for three years.

'30

ROYER R. BLAIR (E.E.) recently observed his fortieth year of service with Bell Laboratories. Blair, who for several years has been one of the country's leaders in research in circuitry, is a member of the Systems Technology Research Laboratory in Whippany, N.J. He currently holds 20 patents for his work which for the last dozen years has been the study of the effects of radiation damage on the performance of semi-conductor devices in a variety of applications.



'34

GENE A. ZWERNER (M.E.) has been appointed manager of field sales for FMC Corporation's Link-Belt Products Group, with headquarters in Indianapolis. Zwerner, who has a background of 24 years in sales experience with FMC/Link Belt, is responsible for field sales operations. The widely-known alumnus, who holds some kind of a record for work and offices held in a number of Rose Tech Clubs in the East and Midwest, most recently was assigned as FMC's Regional Coordinator for the Northeast Region with Headquarters in Philadelphia. His current address is 850 Indian Trails, Apt. 10, Carmel, Ind. 46032.

'37

J.E. SONNEFIELD (M.E.) reports a temporary change of address due to a relocation of an Alcoa extrusion press from the Whittier, Calif., plant to Cressona, Pa. Sonnefield, who formerly was maintenance superintendent at the Whittier facility, is construction manager of the installation at the Cressona plant. His current address is 10 Avenue "A", Pine Crest Village, Pine Grove, Pa. 17963.

'40

JOHN F. KOWINSKI (E.E.) has returned to his hometown of Clinton and a position as Department Head over plant maintenance at Eli Lilly's new plant north of Clinton. John reports he has been quite busy with moving and the plant startup of the facility which is slated to begin production in the next few weeks. The Kowinskis new address is 527 Blackman Street, Clinton, Ind. 47842.

'42

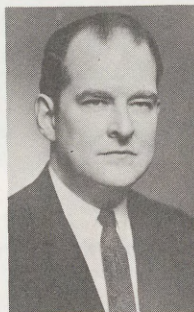
MARTIN J. CAVANAUGH, JR. (Ch.E.) has been appointed to the position of personnel director at the new Indianapolis operations division of Detroit Diesel Allison, a division of General Motors. Cavanaugh, who joined General Motors in 1942, has been personnel director at Allison at Indianapolis since 1967. Creation of the new division by consolidation of the former Allison Division and the former Detroit Diesel Engine Division was announced in early September.

'46

ROBERT D. STRUM (E.E.) and his family are spending the 1970-71 academic year in Bath, Somerset, England, where he and John Ward, a fellow professor of electrical engineering at the Naval Postgraduate School, are working with the faculty of Bath Technological Institute under a National Science Foundation grant.

Strum and Ward, who have developed universally accepted methods of programmed instruction in Laplace transforms (a special technique in teaching higher mathematics) and systems analysis are teaching the faculty at Bath Tech new methodology in engineering teaching--a year-long program which Strum and his partner introduced to the Rose faculty during a ten-day workshop last April (See Echoes, Spring 1970). Strum, who has been on the faculty at Naval Postgraduate School, Monterey, Calif., since shortly after leaving the Rose faculty in 1958, has taken temporary residence at 1 Byland House, Cleveland Walk, Bath, Somerset, England.

EDWIN A. MARTIN (Ch.E.) has been appointed as divisional president for the Uniroyal Plastics and Industrial Products Company with responsibility for such products as ABS plastic products, vinyl products, cellular plastics and similar items. Martin, who joined Uniroyal, Inc., in 1947 as an industrial engineer at the Mishawaka, Ind., facility, rose through management positions to managing director of Uniroyal, Ltd., Edinburgh, Scotland, in 1962, president and chief executive officer, Uniroyal, Ltd., of Canada in 1965 and as group vice president of the consumer, industrial and plastics products division in New York City in 1969. His appointment as division president became effective August 1. The Martins are parents of a son and a daughter and reside in Darien, Conn.



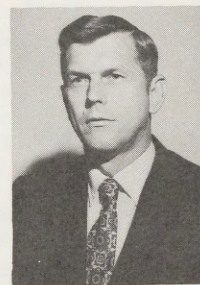
'48

PHILIP R. VANCE (E.E., October) has moved to Europe as director of the Brussels office of MITRE Corporation. In his newly acquired position Vance will head a team in Brussels which provides technical support to NATO. He formerly was head of the Department of Command and Management System, Planning and Engineering for The MITRCO Corporation, a research subsidiary of the Massachusetts Institute of Technology. Vance's current address is MITRO Corporation, U.S. NATO, APO, New York. 09667.

Change of address?
Send it to Rose

'49

HARRY CRAIG, JR. (M.E.) has been promoted to plant manager at Union Carbide Corporation's original and largest Zendel film and bag plant at Cartersville, Ga. Craig, who has been associated with the plastic film and bag business since 1957, has held assignments at the former Visking Division of Union Carbide Corporation at Terre Haute, Chicago, Wayne, N.J. and Bound Brook, N.J. He has been located in Cartersville since 1965, where he has held both technical and production assignments, including the assistant manager's post since 1968. Announcement of the promotion was made in Chicago on Sept. 3.



'50

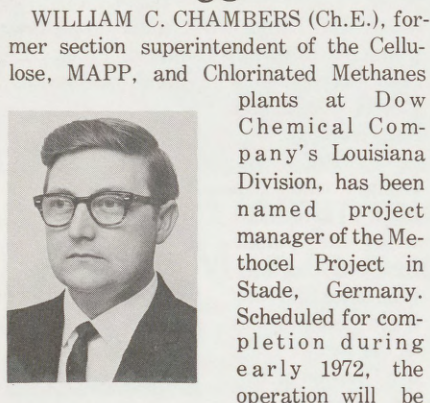
RICHARD J. KUEHL (E.E., August), former caustic plant superintendent at Dow Chemical Company's Louisiana Division, has been transferred to Dow Canada as assistant division superintendent of electrochemicals with the Sarnia Works in Ontario. He will be involved with improvements in mercury cell operation and pollution control. Kuehl, who joined Dow in 1957 in purchasing, transferred to operations the following year and had been plant superintendent since March, 1967. His new address was not available when the Echoes went to press.



WILLIAM E. SLAGLEY (M.E., August) has been named assistant superintendent of the Hot Mills section of the Inland Steel Company at East Chicago, Ind. Slagley, who joined Inland's engineering department in 1955, was promoted through engineering positions to assistant superintendent of the Cold Mills in 1964, a position he held until the recent promotion.

ROBERT D. SHAW (C.E., August) has been named district right of way engineer for District Five of the Illinois Division of Highways. Shaw, who resides at Paris, Ill., formerly was assistant district engineer of design, for the Illinois Division of Highways. His current address is 629 East Wood Street, Paris, Ill. 61944.

'53



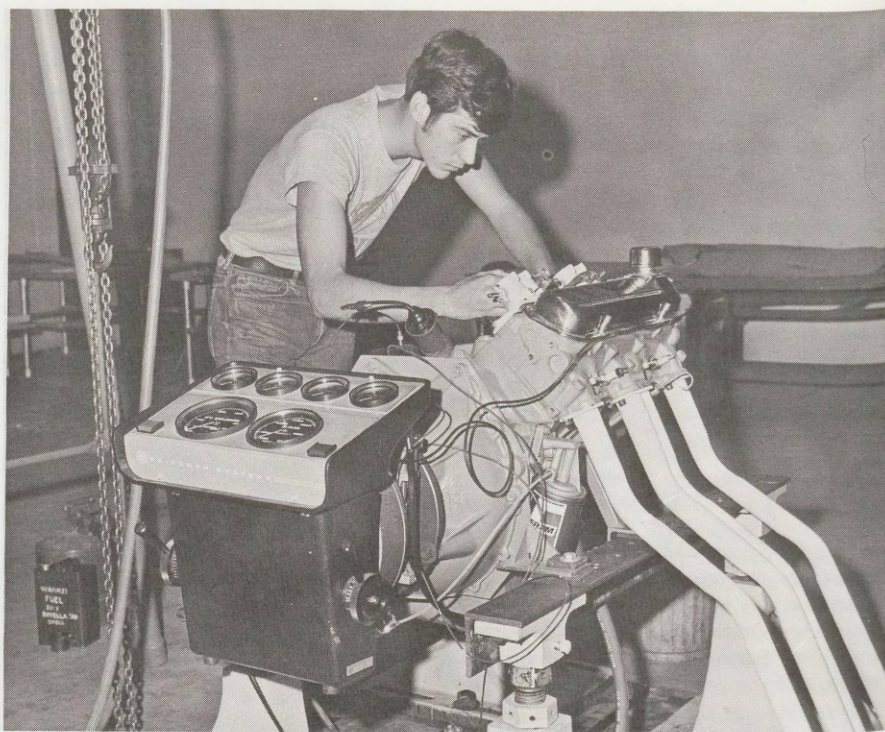
WILLIAM C. CHAMBERS (Ch.E.), former section superintendent of the Cellulose, MAPP, and Chlorinated Methanes plants at Dow Chemical Company's Louisiana Division, has been named project manager of the Methocel Project in Stade, Germany. Scheduled for completion during early 1972, the operation will be

Dow's first Methocel facility in Europe and will have an annual capacity of 15 million pounds, making it one of the largest facilities of its kind in the world. Chambers joined Dow as a chemical engineer in Midland, Mich., in 1956, and subsequently was transferred to the Louisiana Division in 1960. He was promoted to production supervision in 1961, plant superintendent in 1964 and section superintendent in 1968. His family will join him in Europe the first of the year.

WILLIAM J. STEWART (Ch. E.) has moved from Louisville to St. Louis and a position as principal project engineer for Mallinckrodt Chemical Works. He is responsible for design and construction of projects involving plant expansion, new plants and process improvement. Stewart formerly was with Celanese Coatings Company for 14 years, last serving as manager of project engineering. His new address is 1745 Bent Twig Lane, St. Louis, Mo. 63138.

'55

PAUL C. ELLIOTT (Ch.E.) has been appointed manager of special product sales for Marathon Oil Company. Prior to his promotion Elliott was senior refining engineer and served as supervisor of cost control and contract administration on Marathon's refinery expansion project. Having joined the company in 1962 as a project engineer, he served as assistant to the vice president of refining, marketing and supply of Marathon International Oil Company in 1966-67 and then as special assistant to the senior vice president of refining and marketing. The Elliotts have four children and reside at 1620 Imperial Lane, Findlay, Ohio 45840.



Mark H. Bruce, Tell City senior, works on a test engine in the recently completed Rhiman A. Rotz Memorial Engine Laboratory. The laboratory is located in the Mechanical and Aerospace Engineering Annex, was made possible through gifts from the Rotz family. A 1937 graduate of Rose, Rhiman A. Rotz was president of Rotz Engineering of Indianapolis and chairman of the technical committee of the United States Auto Club (USAC) at the time of his death in a plane crash in 1967. His father, John M. Rotz ('06) preceded him at Rose.

Oregon "Outstanding Engineer Award" Goes to H. Loren Thompson, '34 C. E.

H. Loren Thompson ('34, C.E.), president of Stevens, Thompson & Runyan, Inc., of Portland, Oregon, was named the winner of the "Outstanding Engineer Award" by the Oregon section of the American Society of Civil Engineers. The presentation was made during the organization's annual meeting in September.

The Outstanding Engineer is chosen on the basis of advancement of civil engineering, service to ASCE and other professional engineering societies and community service. The recipient must be accepted as outstanding in these areas by his associates as the award not only honors the individual's accomplishments but points out the contributions that civil engineering can make to society.

Thompson's career as a civil engineer began after his graduation from Rose and later from Michigan State where he earned a MSCE. In 1948 Rose awarded

him a C.E. degree which recognizes superior achievement in civil engineering.

From 1938 to 1945, he taught civil engineering at the University of Idaho and The Technological Institute at Northwestern University. He joined the firm he now heads in 1945 and since has been in charge of many major projects for water and sewage facilities, highways, airports and urban planning.

Active in the community, he has served on the Portland Planning Commission since 1954. Honored as the "Engineer of the Year" by the Professional Engineers of Oregon in 1958, he was a member of the Oregon State Board of Engineering Examiners from 1953 to 1965.

Change of address?
Send it to Rose

Rose Echoes Alumni Magazine

DR. RALPH A. LLEWELLYN, JR. (Ch.E.) is the new chairman of the Department of Physics at Indiana State University. He joined the ISU faculty in September after nine years on the faculty at Rose, during which time he rose to the rank of professor and chairman of physics. Listed in Outstanding Young Men in America,



Who's Who in the Midwest, American Men of Science, Who's Who in American Education and Indiana Lives, Dr. Llewellyn last month was selected for inclusion in Outstanding Educators of America.

ALBERT E. "ED" WHITNER (M.E.), reported in the last issue of The Echoes as the new Director of Quality Assurance Department at the Crane Naval Ammunition Depot, has another new position. He now is Director of the Quality Evaluation Department at NAD Crane. Whitner has been with Crane for nine years and formerly was associated with the Weapons Production Engineering Center as manager of the Product Development Division.

PHILIP B. KIRK, M.D., (M.E.) recently resigned his Regular Army commission after having reached the rank of Lieutenant Colonel in the Medical Corps and has entered private practice in Melbourne, Fla. Dr. Kirk, who is a specialist in ophthalmology, was graduated from the Indiana University School of Medicine in 1960, and entered the military shortly after medical school. His current address is 705 Malibu Lane, Indianantic, Fla. 32901.

Bill Gaither Named Dean of Marine Studies at Delaware

Many believe the next big challenge for engineering and science lies not in space but in the sea. One such engineer is Dr. William S. Gaither, a 1955 Rose graduate in civil engineering and recently appointed dean of the new College of Marine Studies at the University of Delaware.

Dr. Gaither received the appointment in July after serving since January as special assistant to Delaware President E. Arthur Trabant on the planning and development of marine studies.

He concurrently served as coordinator of the two-year National Science Foundation sponsored Sea Grant Project for research on commercially valuable marine resources in the Delaware region, and was program manager for a three-year Themis research program in the coastal and oceanographic environment from Atlantic

'56

RAYMOND J. LEPP (M.E.) has been promoted to General Mechanical Foreman at Inland Steel, Chicago. Ray also reports that he completed the requirements for a P.E. registration in Illinois some time ago, and has since begun work toward an MBA at Northwestern University's graduate School of Management. Lepp's address is 820 Travers Lane, Flossmoor, Ill. 60422.

'57

RONALD R. MEREDITH (M.E.) has been appointed Vice President and General Manager of Carpenter Printing and the Photo Composition companies in Cleveland, Ohio. In the new position Meredith is responsible for all matters relative to management, including production, personnel administration, and training programs. Meredith



entered the printing industry in 1966 when he joined Harris-Seybold Division of Harris-Intertype Corporation, and has held the positions of Technical Specialist, Wrap-Around presses; Merchandising Manager, Offset Presses; and Project Manager, Dayton plant. Prior to joining Harris, he worked nine years with TRW, INC., in Cleveland, rising through engineering management positions to Customer Requirements Manager of the Dynamic Space Power Systems Department. Meredith, his wife and three children reside at Parma, Ohio. 44129.

FRED W. GOETSCH, JR. (E.E.), who served as co-chairman of the Indiana Society of Professional Engineers' 33rd Convention and Annual Meeting in Indianapolis in June, is a new state director at large in the ISPE. In addition to his P.E. activities and outstanding service as chairman of the Rose Alumni Association's committee on student recruitment, Fred is district engineering manager-trunk transmission for Indiana Bell Telephone Company in Indianapolis.

ROBERT E. BURTNER (Ch.E.) has been promoted to Product Quality Specialist in the Corporate Development Division of Sun Oil Company in Wilmington, Del. Burtner, who joined Sun Oil following completion of the Ph.D. in mechanical engineering at Purdue University in 1964, is assigned in the Environmental Conservation Department of the division, an area of great interest to the oil industry. Burtner's address is 2318 Wynnwood Road, Wilmington, Del. 19803.

JOHN W. CRISP (E.E.) has moved to New York City to assume a position as Assistant Manager in the patent licensing department of the Western Electric Company. Crisp, who has been with Western Electric since graduation, formerly was at the company's operations in Kansas City. His new address is 11 Brier Court, Murray Hill, New Jersey. 07971.

Homecoming '71 October 29-30

City, New Jersey, to Ocean City, Maryland.

Although the University of Delaware has been active in marine studies since 1950 when the state General Assembly appropriated funds to support a program in marine biology and related research, the new program drawn up by Dr. Gaither will turn special attention to state and regional marine problems. Topics to be included are pollution, shoreline erosion and storm protection, loss of wildlife and nutrient areas, and planning and management of marine resources, recreation areas, and marine-related socioeconomic problems.

Dr. Gaither has worked in marine engineering for more than 10 years, having gained extensive experience on engineering projects for Bechtel, Dravo and Mey-

er corporations throughout the world. He also has served on the American Society of Civil Engineers' Technical Council on Ocean Engineering since joining the faculty at Delaware in 1967.

Prior to joining the university, he was chief engineer for port and coastal development with Bechtel Corporation, and was a registered professional engineer in Pennsylvania, Delaware, Wisconsin, Florida, Alaska and California.

Dr. Gaither received masters degrees in arts and engineering science as well as the Ph.D. (1964) from Princeton University.

The University of Delaware is excited about the new program planned by Dr. Gaither. His university president puts it this way: "It opens a new era for the university and a new era for the State of Delaware."

P. KENT SHARP (E.E.) has been appointed chairman of electrical technology at Indiana University-Purdue University at Indianapolis. The appointment, effective July 1, includes promotion to associate professor of electrical engineering technology at the Indianapolis regional campus of the state university system. In addition to teaching duties, Sharp is active in the developing Center for Advanced Research and in producing applications of electrical devices for the medical field, a new role for the capital campus. Sharp's address is 303 Edwards Avenue, Beech Grove, Ind. 46107.

'58

CHARLES E. SKIDMORE, M.D., a graduate electrical engineer who turned to a career in medicine, has opened a general practice in Wolcott, Ind., a community of 1,000 some 30 miles north of Lafayette in White County. Dr. Skidmore, who entered medical school following military service, formerly practiced in Indianapolis. His new address is Box 395, Wolcott, Ind. 47995.

RONALD G. REEVES (E.E.) recently was installed as president of the Francis Vigo Chapter of the Indiana Society of Professional Engineers. Reeves also is busy as Director of Development at Rose and the task of completing the second half of the \$17 million Centennial Development Program.

'59

DONALD H. JOHNSON (Ch.E.) recently completed a Masters in Business Administration from Harvard Business School and has returned to Dayton, Ohio, as Business Planner for Mead Papers, a division of Mead Corporation. Johnson, who formerly was a chemical engineer with Mead in Kingsport, Tenn., prior to entering graduate school, resides at 3860 Ackerman Boulevard, Kettering, Ohio 45429.

'60

DR. WILLIAM C. PERKINS (C.E.), acting chairman and associate professor of quantitative business analysis in the Graduate School of Business at Indiana University, was awarded the Frederic Bachman Lieber Memorial Award for distinguished teaching at the recent Founders Day Ceremonial of the university. Dr. Perkins has been at I.U. since shortly after graduation from Rose, having completed the M.B.A. with high honors in 1962 and the Doctor of Business Administration degree in 1966.

A nationally-known leader in his field, he has published numerous articles and papers on the use of simulation as a management tool and on simulation analysis.

'61

RUSSELL E. ARCHER, JR. (Math) has been promoted to Head, Computing Technology Department for the Bell Telephone Laboratories facility in Holmdel, N.J. In his new position, Archer will be responsible for the Holmdel computer center. Archer, who has been employed by Bell Laboratories for nine years, formerly was supervisor of the Time Sharing System Software Group at the company's Indian Hill laboratory near Naperville, Ill. His new address is 3 Wellington Court, Colts Neck, N.J. 07722.

'62

WILLIAM R. BROWN (Math) has accepted a position as Coordinator of Student Activities at Washington State University, Pullman, Wash. Bill completed the requirements for a Ph.D. in guidance and psychological services at Indiana State University in August and assumed the new post following a vacation in the mountains en route to Washington. No newcomer to the college administration, he worked in admissions and counseling work, as well as Director of Hulman Memorial Union during his eight years with Rose Polytechnic. The Browns new address is West Apartment 16, 200 North State Street, Pullman, Wash. 99163.

Amateur Ham Dick Moench Helps Peru Quake Victims

A Terre Haute amateur radio operator found himself to be the sole link with the outside world for about 30,000 survivors around the epicenter of an earthquake which shook Peru in June-- an earthquake which claimed the lives of thousands and caused millions of dollars in property damage and destruction.

The amateur "ham" was Richard Moench ('64, Ch.E.), and before he put his earphones aside, he had played an important role in helping get disaster relief to victims of earthquake-torn Peru.

Moench, who first established radio contact with a group of Benedictine monks from St. Meinrad Archabbey late in 1967, was at work at his radio a very short time after the earthquake hit Peru. He made contact with the monastery outside the city of Huaraz in the state of Ancash and learned from Brother Hilary Henrissey that approximately 10,000 of the city's 50,000 population had perished in the most severe blow by the earthquake. Among

the dead was the Rev. Bede Jamieson, 44, prior of the monastery and an acquaintance of Moench.

Father Bede visited Terre Haute last November at the invitation of Moench to have the priory's drinking water tested. At that time officials at the Terre Haute Water Works plant found the water had a high acid content. Father Bede remarked that the change could have been the result of several minor earthquakes in the vicinity of the priory.

Moench handled emergency messages for the state of Ancash until regular communications were restored there, and on the day of the earthquake made no fewer than eleven telephone calls relaying messages and contacting emergency organizations. Among the agencies contacted were the American Red Cross, the Peace Corps and Project Hope in an effort to have the U.S.S. Hope dispatched to the Peruvian coast.

Additionally, he relayed messages of the

victims to their families in Indiana as well as other regions of the United States. Inasmuch as the Peruvian monastery is a minor seminary and prep school established by St. Meinrad Archabbey located near Tell City, Indiana, a number of those involved have their roots in Indiana.

Moench, who recently left the Visqueen Division of Ethyl Corporation for a position with Eli Lilly & Company at its new Clinton plant, first established contact with the Indiana-born Father Bede for the purpose of maintaining communications between the St. Benedict community and relatives and friends in the States.

His subsequent help on the drinking water tests and regular talks with the monks made his role in disaster relief for Peru a very personal one. The American Red Cross, Peruvian nationals in the states and relatives of people caught in the earthquakes are more than grateful for the part he played in this emergency communications system.

'63

DAVID A. DUMFORD (E.E.) recently was promoted to department chief of ESS Circuit Pack Engineering for Western Electric at Lisle, Ill. Dave reports he presently is located in a pilot shop in Addison, Ill., until the Lisle Plant becomes available in December. Shortly after the June 1 promotion came the big news--twin girls, Sara Ellen and Karen Ann, born to the Dumfords August 13. The Dumfords new address is 1217 Cardinal Lane, Naperville, Ill. 60540.

'65

TERRENCE L. FENIMORE (Ch. E.) completed a masters in business administration from Northern Illinois University in June and since has taken a position as a biochemical engineer with Eli Lilly in Indianapolis. He currently is assigned at the Kentucky Avenue Plant in antibiotic development. Prior to joining Eli Lilly, he was a process engineer for Amoco Chemicals Corporation, Joliet, Ill. Fenimore's current address is R.R. 2, Box 206, Greenwood, Ind. 46142.

DR. PAUL F. LILIENKAMP (Math) joined the faculty of Rudolph-Macon College in Ashland, Va., this fall as assistant professor of philosophy. Following his graduation from Rose, he entered graduate school at Southern Illinois University where he received the M.A. and Ph.D. degrees in philosophy. His current address is Randolph-Macon College, Ashland, Virginia. 23005.

PETER B. CANALIA (M.E.) was graduated from The John Marshall Law School of Chicago in June and has taken a position as a patent lawyer for the law firm of Molinare, Allegrretti, Newitt and Witcoff. Canalia, who formerly worked for General Electric, resides at 2306 East Holiday Court, Lansing, Ill. 60438.

PAUL "PETE" GRAFE (Math, January) has entered the real estate business in Terre Haute as a broker for Underhill-Black, Inc. Pete formerly was associated with Columbian Enameling Company in Terre Haute, and for the last two years had sold real estate on a part-time basis. His current address is 521 South 19th Street, Terre Haute, Ind. 47803.

'66

PHILIP L. CARTER (E.E.) received a Doctor of Business Administration degree from Indiana University in March and accepted a position as assistant professor

Fall, 1970

in the Department of Management at Michigan State University at East Lansing. Dr. Carter reports his teaching duties are in the production management and operations research areas. He also is conducting some research in these areas and participating in various management development seminars at M.S.U. On a personal note, the Carters first child, Amy Kathleen, was born in July. The Carters address is 1705 Chief Okemos, Apartment 7, Okemos, Mich. 48864.

BRUCE L. JOHNS (Ch. E.) has completed the requirements for a masters in biological engineering at Rose Polytechnic Institute and has begun work toward a Ph.D. in physiology at the Indiana University Medical Center in Indianapolis. During the last year at Rose he designed and supervised the assembling, testing and calibration of a flow scheme used to test artificial heart valves. His thesis dealt with the theory of the use of dimensionless parameters in the cardio-vascular system. Prior to returning to Rose for graduate work, Johns was associated with Pittsburgh Plate Glass, his last assignment with PPG being a two-year stint in Sierra Leone, West Africa. Johns currently resides at 5353 West Vermont, Indianapolis 46224.

WARREN G. GASKILL (B.S., undesignated) completed a Ph.D. in environmental and sanitary engineering at Washington University in St. Louis in April and has since joined E.I. duPont's engineering department Wilmington, Del. He is working as a technical service engineer with responsibility for providing technical backup for plant water pollution control problems. Gaskill earned an M.S. at Washington University in 1967. His address is LaVilla Belmont Apartments, Welsh Track Road, Building 60, Apartment 101, Newark, Del. 19711.

DANIEL J. GOODWIN (B.S., undesignated) completed a Masters in Business Administration from Indiana University in June and has stayed on at the university as Manager, Technical Operations for Aerospace Research Applications Center (ARAC). ARAC, which started as an operation to disseminate new technology of the space program, has grown into a large technical information center centered about computer indexes of technical literature from various fields. Goodwin's current address is 1412 Winfield Road, Bloomington, Ind. 47401.

DONALD E. LUNDGREN (E.E.) has been promoted to Associate Marketing Representative with International Business Machine Corporation. Following his graduation from Rose, he earned his M.B.A. in June of 1968. Don joined IBM in

September of 1968 and assigned in Los Angeles. He and his wife, Gloria, reside at 3433 Via La Selva, Palos Verdes Estates, Calif. 90274.

'67

BERT O. WILLIAMS, JR. (M.E.) returned to Terre Haute some months ago and a position as Sales Manager and Broker with Branam Williams Realtors. Prior to taking the position he worked with General Electric, Apollo Systems, as a design engineer in their airborne equipment unit in Daytona Beach, Fla. Interestingly enough, his friendly competition includes two other real estate brokers in Terre Haute who also are graduates of Rose, Carl N. Miller, Jr., and John T. Newlin, both of the class of February, 1943. Williams' current address is P.O. Box 335, Terre Haute, Ind. 47808.

SANAT THONGJEN (C.E.) sends a note that he is working as a civil engineer with the Electricity Generating Authority of Thailand (EGAT). Thongjen reports that EGAT is a state enterprise and the sole supplier of electricity in Thailand. Besides producing power, this authority is engaged in many construction projects, including thermal power plants, an atomic power plant and a dam. Thongjen currently is a field engineer at the Siuth Bangkok project which when completed will be the largest in Thailand. His address is 533 Samrong Nua, Sukumvit Road, Samutprakarn, Thailand.

'68

STEPHEN W. WHITESELL (M.E.) has been transferred to Pittsburgh for the third phase of General Electric Company's Manufacturing Management Program. Having joined General Electric upon graduation, he spent the first year in Schenectady and the second in the Neutron Devices Department of GE in St. Petersburg, Fla. Whitesell will be in Pittsburgh for one year, after which he will be given a permanent assignment. His current address is 724 Rose Lane, Pittsburgh, Pa. 15234.

DON R. RILEY (E.E.) is stationed with the HHD Detachment, 160th Signal Group at Long Binh, South Vietnam, according to word received shortly after his departure for the overseas assignment in late May. Prior to entering the Army, he was with General Electric Company in New Jersey. Mail may be directed to Don at 1873 Adelaide Boulevard, Akron, Ohio 44305.

Change of Address?
Send it to Rose.

JERRY A. WONES (C.E.) has taken a position as Administrative Assistant to the City Manager of Charlotte, N.C. Wones, who formerly worked for the City of Dayton, Ohio, in a similar line of work, received a masters in Public Administration from the University of Dayton in December, 1969. The move not only means a promotion for Wones, but experience as the number two man in the administration of a growing city of more than 200,000 should lead Wones to a city managership. Wones new address is 2500 Eastway Drive, Charlotte, N.C. 28205.

LARRY G. ANDERSON (Chemistry) was commissioned a second lieutenant in the U.S. Army on August 13 upon successful completion of a six-week ROTC training program at Fort Riley, Kansas. Anderson is making good progress toward the Ph.D. in physical chemistry at Indiana University. He has made several trips back to the Rose campus, and last year brought his major professor to Terre Haute for an American Chemical Society student affiliate program. Mail may be directed to University West 317, Bloomington, Ind. 47401.

ALAN F. HOSKIN (Math) is assigned to Mountain Home Air Force Base, Idaho, for duty with the Tactical Air Command which provides combat units for air support of U.S. ground forces. Airman First Class Hoskin's assignment followed completion of the Air Force electronic equipment school at Keesler AFB, Miss. Mail may be directed to Hoskin at 2202 Wesley Avenue, Evanston, Ill. 60201.

JOHN J. RHYNARD (M.E.) has been awarded U.S. Air Force silver pilot wings upon graduation at Laughlin Air Force Base, Texas. Second Lieutenant Rhynard, who was commissioned in 1969 upon completion of Officer Training School at Lackland AFB, Texas, is scheduled for assignment at Bien Hoa Air Base, Vietnam following specialized aircrew training at other bases. His assignment will be as an O-2A Super Skymaster pilot in the 504th Tactical Air Support Group, a unit of the Pacific Air Forces, headquarters for air operations in Southeast Asia, the Far East and Pacific area.



DAVID B. MOORE (C.E.) has completed basic training at Lackland Air Force Base, Texas, and since has been assigned to Sheppard AFB for training in the communications field. Moore entered the Air Force in July after working as chief engineer for the Milwaukee Road in Savannah, Ill., since June, 1969. The major news, however, is his marriage to the former Brenda Doyle, Clinton, Iowa, on Sept. 18. Mail may be directed to Box 285, Antrim, N.H. 03440.



PAUL D. BROUGHTON (M.E.) reports a transfer from the Vehicle Dynamics Laboratory of General Motors Proving Grounds at Milford, Mich., to the Vehicle Emissions Laboratory of General Motors Proving Grounds, El Segundo, Calif., effective July 1. Broughton, who is working in the area of pollution control, resides at Apartment 201, 4455 Pacific Coast Highway, Torrance, Calif. 90505.

LARRY W. RENNELS (E.E.) has transferred to the new Motorola, Inc., plant in Ft. Lauderdale, Fla., effective Aug. 1. Rennels, who is a development engineer in the Communications Division, formerly was assigned at Motorola's Rolling Meadows, Ill., facility. His new address is 1880 Northwest 42nd Terrace, Apartment 2018, Lauderdale, Fla. 33313.

'69

DAVID K. SHEWMAKER (M.E.) moved to Cartersville, Ga., in July and a position as project engineer for Union Carbide Corporation. He formerly was with the Allison Division of General Motors in Indianapolis, having joined GM as an engineering trainee upon graduation from Rose. His new address is 130 North Erwin Street, Apartment 5-C, Cartersville, Ga. 302120.

Homecoming '70 In Next Issue

Tony Tietz Enjoys Teaching With Peace Corps in Africa

Anthony J. "Tony" Tietz dropped in on his former professors at Rose Polytechnic in August with one of the most unusual requests by an alumnus in years. He wanted to borrow some books!

It isn't that Tony now feels he should have hit them a little harder while he was on the campus; nothing like that at all. The books and some long-discarded visual aids will be a tremendous help to him on his job--that of a teacher of chemistry with the Peace Corps in Africa.

Tietz, who was graduated with a B.S. in chemistry in June 1969, was home on leave following his first year as a teacher in a boarding school in Asankrangwa, Ghana. Trimmed down some twenty-five pounds from his pudgy college days, he had nothing but good words and enthusiasm in describing his first year out of Rose. Furthermore, it will not be a sur-

prise if he signs on for a third year when his official tour with the Peace Corps ends next summer.

Tietz reports that he was "looking for a change. . . something radically different" when he struck on the notion of joining the Peace Corps. That is exactly what he found in Ghana. The pay is poor (\$140 per month) and the climate of the tropical rainforest of Africa took some getting used to.

Having adjusted remarkably to both, the challenge of teaching chemistry at the 400-student school at the edge of the forest has agreed with Tietz.

"Teaching there has been particularly rewarding because the students are so highly motivated," says Tietz, "They're on a British system. . . the competition to go on to the university is very strict." (Approximately one in ten are admitted to

a university).

Taking into account that Ghana has but three universities--a technical school, a teachers college and general school--the top half of the class looks to someone of Tietz' background for assistance in getting into the prestigious technical school which admits only the finest students.

Although about one-third of the students do not speak English, the language barrier has not hindered Tietz. He communicates with the natives and takes meals with them instead of purchasing the very expensive imported favorites. In fact, it was saving on the "grocery bill" that allowed him to save enough money to return to the United States.

"Of course, there is some amount of frustration," admits Tietz, "It takes a lot of patience and some tolerance when one is accustomed to the highly efficient American system."

In Memoriam

'98

MORTON B. STEWART (E.E.) died March 30 in El Paso, Texas. Prior to his Retirement, he was an engineer with Mexico - American Smelting & Refining Company, having spent much of his career in Mexico.

'03

EDWARD C. KIRBY (M.E.) died August 8 in California. He was associated with Swift and Company of Chicago from 1915 until his retirement some 20 years ago.

'10

PHILIP W. POINDEXTER (E.E.) died January 1 in Stevensville, Montana, where he had served as Postmaster for a number of years prior to his retirement.

'13

EMMETT J. O'CONNELL (E.E.) died July 30 in Sherman Oaks, Calif. Prior to his retirement he was an account executive for the Detroit Lubricator Company in the southern California area.

'16

GLEN W. EVANS (E.E.) died July 6 in Erie, Pa. He joined General Electric Company upon graduation and remained with the company until retirement.

RALPH E. FINLEY (C.E.) died May 25 in Indianapolis. He formerly was a partner in Engineering products Corporation of Indiana for 33 years prior to his retirement in 1960.

'19

CHESTER H. CORTELYOU (E.E.) died July 21 in Detroit. Prior to his retirement he was chief electrical engineer for the City Engineer's Office of Detroit.

'21

Belated word has been received of the death July 14, 1969 of FRED R. OWENS (Ch.E.), formerly chairman of the board of Cyrus Wm. Rice Company, Inc., of Pittsburgh, Pa.

Fall, 1970

'22

MAYNARD H. DUCK (M.E.), died May 19 in Wilmington, Del., where he was a design engineer for E.I. DuPont de Nemours & Co., there at the time of his death.

'23

DONALD L. MEWHINNEY (M.E.) died March 7 in Merritt Island, Fla. He formerly was Director of Industrial Relations for the National Industrial Council in Washington, D.C.

'28

GUY A. STALLARD (E.E.) died July 17. He formerly was with the Coach of Truck Division of General Motors Corporation in Pontiac, Mich.

'30

JAMES S. BREVOORT (C.E.) died Feb. 2 in Chattanooga, Tenn. He formerly was a civil engineer in the Maps and Survey Division of the Tennessee Valley Authority in Chattanooga.

'32

CLIFTON A. PRATT (C.E.) died June 2 in Poland, Ohio. A longtime employee of United States Steel Corporation, he was superintendent of a USS limestone quarry of the Illsville (Ohio) Plant at the time of his death.

'33

EDMUND A. SCHROEDER (E.E.) died Jan. 9 in Cuba City, Wis. He was president of Schroeder, Inc., there at the time of his death.

'40

MAX L. MITCHELL (C.E.) died July 27 in Dayton, Ohio. For the last 16 years he had been chief engineer for the Miami Conservancy District with headquarters in Dayton where he had received national recognition for his work in water resources and river control. He formerly was with the TVA in Tennessee and Ohio.

Lt. Max Joseph Lost at Sea in Carrier Mishap

Navy Lieutenant MAX E. JOSEPH, a 1966 graduate of Rose in civil engineering, was lost at sea in the Pacific Sept. 27, according to information released by the U.S. Navy.

Lt. Joseph was a flight officer on a photo-reconnaissance plane which went over the side during an arrested landing aboard the USS Ranger, attack carrier.

According to the Navy report, the tail hook on the RA5C aircraft separated from the plane and the aircraft proceeded over the side of the carrier. The pilot and Lt. Joseph were both lost at sea.

Memorial services were conducted in Albany, Ga., where Lt. Joseph had been stationed in recent months, and in Danville, Ind. His classmates have established a memorial in his honor at Rose.

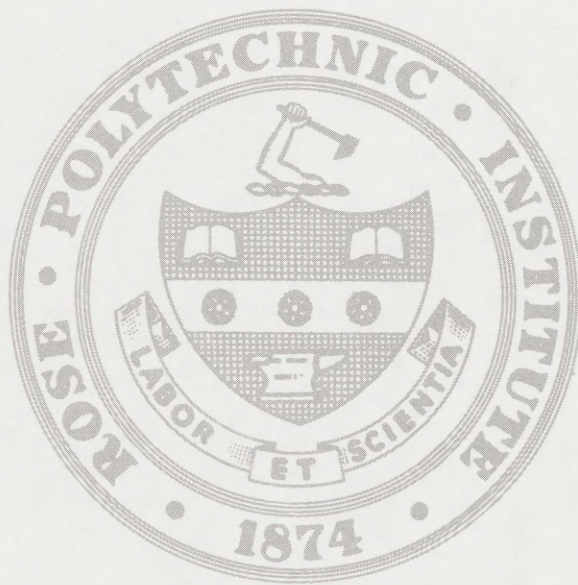
'48

MAX E. LINDLEY (M.E., October) died Nov. 18, 1969 in Robinson, Ill. He formerly was a mechanical engineer at Bunker Hill Air Force Base, Peru, Ind.

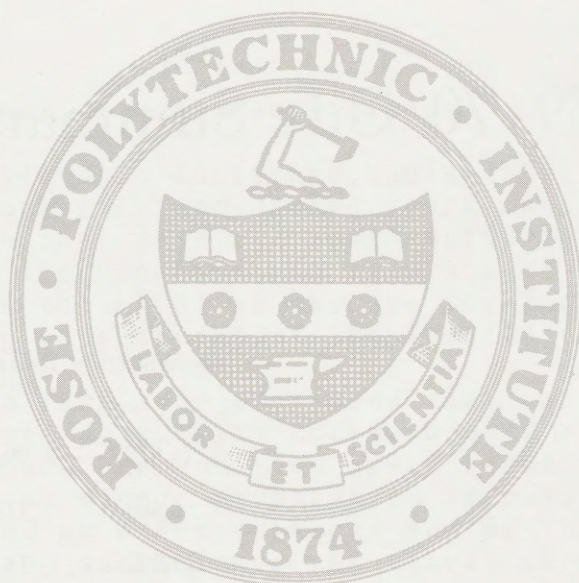
'53

JOHN M. KELLY (M.E.) died Aug. 18 in Tucson, Ariz. At the time of his death he was post engineer for the Federal Test Station at Yuma, Ariz.

If you know of the death of a Rose Polytechnic alumnus which has not been reported in The Echoes, please write or call the Alumni Office at the school with this information.



On to the Centennial 1974



1969-70 Report of Annual Giving

1969-70 Gift Summary

	Unrestricted	Restricted	Total
Alumni	\$ 74,928	\$ 99,037	\$ 173,965
Parents	5,503	11,750	17,253
Terre Haute Community	11,177	14,132	25,309
National Business & Industry	47,224	172,074	219,298
Associated Colleges of Indiana	67,254	3,000	70,254
Foundations	2,550	75,275	77,825
Bequests	15,578	25,000	40,578
Special & Non-Alumni Board of Managers	4,731	57,229	61,960
Government Scholarships		259,721	259,721
Government Grants		132,325	132,325
 TOTAL	 \$228,945	 \$849,543	 \$1,078,488

ROSE POLYTECHNIC INSTITUTE
TERRE HAUTE, INDIANA

OFFICE OF THE PRESIDENT



Rose Alumni, Parents and Friends:

Rose Polytechnic Institute again enjoyed one of its most successful fund-giving years during 1969-70. I believe that this reflects continued confidence in Rose and its programs and is a source of great satisfaction to all of us who are working towards improving this aspect of the Institute.

I am more than ever convinced that our decision to concentrate on quality undergraduate education has been a sound one and that great teaching and an emphasis on career preparation is being increasingly recognized by other colleges and universities of engineering and science throughout the country. In emphasizing undergraduate education Rose is continuing to carry on a tradition which has been developing for almost a hundred years.

In order to remain competitive with the better engineering schools of the nation Rose must continue to maintain a high level of faculty salaries and must continue to improve its physical facilities --- in order to be able to do this we will continue to need your encouragement and financial assistance. We sincerely hope that we will be able to merit this support by doing the best possible job in areas which are vitally important to the development of the nation and of the world.

With best personal regards, I am

Sincerely,

A handwritten signature in cursive script, reading "John A. Logan".

John A. Logan
President

President's Council

The President's Council of Rose Polytechnic Institute is a group of friends particularly interested in promoting Rose's objective of national recognition as the outstanding undergraduate college of science and engineering.

Members contribute \$500 or more annually to the Institute and participate in the advisory activities of the Council. The annual meeting of the President's Council each May provides an opportunity for the Council to meet with various officers of the Institute and discuss the operation of the school and its plans for the future.

Organized two years ago, the President's Council now numbers more than 70 members and includes alumni, parents and friends of Rose.



One of the events of the annual President's Council meeting was the dedication of the Rhiman A. Rotz Memorial Engine Laboratory. Participating in the dedication are Mrs. Rhiman R. Rotz ('37) and Rotz' mother, Mrs. John M. Rotz ('06). Dr. John A. Logan unveils the plaque.

The 1969-70 Rose Polytechnic President's Council

Mr. & Mrs. Harry J. Adams
Mr. & Mrs. James D. Anderson
Mr. & Mrs. Russell E. Archer, Sr.
Mr. & Mrs. Albert L. Bard
Mr. & Mrs. Edward Baur
Mr. & Mrs. Richard F. Bergmann
Mr. & Mrs. G. Lee Berry
Mr. & Mrs. John G. Biel
Mr. & Mrs. Thomas W. Binford
Mr. & Mrs. E.E. Black
Mr. & Mrs. Carroll H. Blanchar
Mr. and Mrs. Benjamin Blumberg
Mr. & Mrs. Morris B. Blumberg
Dr. & Mrs. Nathan A. Bowers
Mr. & Mrs. Charles A. Breskin
Mr. & Mrs. Richard C. Brown
Mr. Ruel F. Burns, Sr.
Mr. Wendell E. Carroll
Mr. Harvey Clark
Mr. & Mrs. Benjamin G. Cox
Mr. & Mrs. Frederick M. Crapo
Mr. & Mrs. Lix da Cunha
Mr. & Mrs. Richard E. Dennis
Mr. Carl E. Ehrenhardt
Mr. Robert B. Evans

Mr. & Mrs. George I. Felstein
Mr. & Mrs. Adam K. Grafe
Mr. & Mrs. Henry C. Gray
Mr. & Mrs. William F. Grube
Mr. & Mrs. Shelton Hannig
Miss Gertrude Hildreth
Mr. & Mrs. E.H. Hilgeman
Mr. & Mrs. Robert W. Hodgers, Jr.
Mr. & Mrs. Harold B. Hood
Mr. & Mrs. Marshall T. Hubbard
Mr. & Mrs. Anton Hulman, Jr.
Mr. & Mrs. Gurdon P. Huntington, Sr.
Mrs. T. Wayne Kehoe
Mr. & Mrs. Roland T. Kelley
Mrs. Robert G. Laatz
Mr. & Mrs. Davis Levi
Mr. & Mrs. William F. Lisman
Dr. John A. Logan
Mrs. Don McDaniel
Mr. & Mrs. J.F. Mayrose
Mr. & Mrs. John C. Mehagan
Dr. & Mrs. John R. Mitchell
Prof. Herman A. Moench
Mr. & Mrs. Henry Y. Offutt
Mr. & Mrs. Walter L. Osmer

Mr. & Mrs. T.L. Reese
Mrs. Mary B. Remster
Mrs. John M. Rotz
Mr. & Mrs. John T. Royse
Mr. Russell S. Sage
Mr. & Mrs. C.C. Scharpenberg
Mr. & Mrs. C. Oscar Schmidt
Mr. & Mrs. Morris T. Shattuck
Mr. & Mrs. Robert Shattuck
Mr. & Mrs. Forrest G. Sherer
Mr. & Mrs. James C. Skinner
Mr. & Mrs. William H. Stone
Mr. & Mrs. Phillip H. Templeton
Mr. & Mrs. Frank P. Thomas, Jr.
Mr. & Mrs. H. Loren Thompson
Mr. & Mrs. John L. Thompson
Mr. & Mrs. Frank H. Thorne
Miss Gladys M. Tilley
Mr. & Mrs. Joe Walker
Mr. & Mrs. James L. Weeks
Mr. & Mrs. Allen J. Weinhardt, Jr.
Mr. & Mrs. Maynard C. Wheeler
Mr. & Mrs. Harold A. York
Mr. & Mrs. F.M. Young
Mr. & Mrs. Gene A. Zwerner

Century Club

Donald E. Alexander July '44
 Otto C. Andres Jan. '49
 J.W. Anstead '23
 J.D. Anthony '31
 John G. Appel '41
 Robert R. Atherton Aug. 50
 Alexander Babillis '28
 Jerry D. Bader '62
 John A. Bartholome 'Oct. 48
 Ralph B. Bennett '23
 Paul A. Benning, Jr. June '47
 Charles E. Bethge Apr. '49
 E.E. Black '11
 Anthony G. Blake '31
 Joseph L. Black, Hon.
 Frederick J. Bogardus '32
 William H. Bradley '40
 Albert F. Brennan '13
 Jim Scott Brevoort '30
 Herbert Briggs, Jr. '20
 T. Andrew Brophy '20
 Harold D. Brown, Jr. '57
 Thomas G. Bucci '69
 Richard P. Burandt Oct. '48
 James Burgett '53
 Vere S. Calvin '14
 Carl M. Carlson Mar. '47
 H.S. Carmack '28
 E.H. Carnarius '21
 M.J. Cavanaugh '42
 William G. Cornell Sept. 47
 James H. Corp '30
 D.R. Coughanowr July '49
 William F. Crawford '33
 D.P. Cromwell '19
 Lix da Cunha '18
 William G. Dedert '45
 William R. Dedert '22
 Robert H. Dinkel July 44
 H.H. Douglas '34
 Thomas E. Drake '15
 Joseph W. Dreher '41
 Ken Duncan '58
 Albert Edwards Oct. '48
 Clyde Ellis x-'23
 Richard C. Ellsworth Oct. 43
 Joseph A. Engelhard '22
 Chester W. Falls '18
 Eugene R. Feagler '57
 Mac Fehsenfeld '52
 M.E. Feldstein '28
 Vern W. Fellows '62
 Ralph E. Finley '16
 David C. Flock '57
 Richard G. Foltz '66
 R. Allen Forsaith '52
 H.P. Freers Oct. '48
 Ray V. Frischkorn '65
 K.R. Garmon '31
 Frederick W. Garry '51
 John P. Giacometto '35
 L.J. Giacometto '38
 Fred H. Goetsch, Jr. '57
 Paul J. Grafe '20
 Henry C. Gray '17
 D.W. Hackett '55

George E. Hadley '29
 Beuford C. Hall, Jr. '55
 C.N. Havill July '49
 L.J. Heedwohl '18
 Dale Eugene Helms '67
 Marlon D. Hildenbrand '59
 Charles E. Howard '32
 Jule Hulman '31
 Howard H. Irvin Feb. '43
 Warren W. Jones '52
 Robert S. Kahn '39
 Delbert Kay '07
 E. Lee Keith '51
 A.C. Kelsall '40
 Charles F. Kleptz '58
 William R. Knipdash Oct. '43
 E. Crone Knoy '58
 William E. Kuchar '59
 William N. Kuschel '65
 L.W. Lewis '13
 Stephen W. Liddle '45
 Donald T. Lo Oct. '43
 Jack L. Loser Feb. '43
 C.W. Lundgren '38
 Memory of W. Scott Mace '12
 Richard D. Madison '13
 George M. Maier '16
 George J. Mason '28
 James B. Matthews '54
 Gordon Mac Beth Oct. '43
 John S. McBride Memorial '05
 H.J. McDargh, Jr. '23
 Owen Meharg '54
 John I. Mendenhall '28
 Kenneth H. Miller '63
 David C. Mitchell Oct. '48
 Leroy W. Mitchell Apr. '49
 Ralph A. Mitchell June '47
 Memory of Harold C. Moench '22
 Richard G. Moench '63
 Paul Montgomery '35
 Whitcomb W. Moore '20
 JoDean Morrow Aug. '50
 John W. Murdock Dec. '47
 Larry W. Myers '61
 Thomas H. Nehmzow '66
 J.T. Neill Mar. '48
 John T. Newlin Feb. '43
 Joseph J. O'Connell Feb. '43
 Dale F. Oexmann '62
 L.L. Ogborn '54
 Charles Olmsted Aug. '50
 Howard K. Pedigo '53
 Fred M. Pence '20
 J. Robert Penisten '37
 John C. Pirtle '52
 Michael W. Percopo Feb. '43
 H.W. Plew July '49

John W. Quinn '40
 Memory of George O. Rall '24
 Lowell L. Ray '31
 Ronald G. Reeves '58
 A.W. Richardson '19
 E.F. Rickelman '25
 Paul H. Robbins Hon.
 James E. Robinson '50
 Edward R. Ronald '21
 Willis E. Rose March '47
 Irwin Rosenak '33
 J.E. Ross '39
 R.L. Royer April, '49
 J.T. Royse Hon.
 Paul H. Sawyers '32
 M.G. Schaefer Apr. '49
 Carl Schroeder '21
 William A. Schumann Apr. '49
 E.H. Scofield '30
 E.C. Scott '22
 Wayne K. Self '17
 Harmon L. Shaw '46
 Wilbur B. Shook Memorial '11
 James G. Simms Nov. '49
 Harold E. Skelley Aug. '50
 James E. Spindle '12
 Raymond D. Summerlot '50
 Colonel A. Swalls '27
 Howard C. Taylor '07
 John H. Todd Jan. '49
 W.J. Toeppe '53
 John E. Tonetti '32
 John W. Trueb '30
 J. Burch Tygart '14
 Joe M. Valentine Oct. '43
 Richard W. Van Kempema
 Feb '43
 Julian A. Vrydagh '18
 John A. Wager '19
 John W. Waite Feb. '50
 C.P. Watson '24
 Joe B. Weaver '35
 E.G. Weinbracht '33
 R.A. Weinhardt '16
 W.T. Weinhardt Feb. '43
 Irvin Reed Weir '21
 Joseph A. Weelings '68
 Ernest J. Welsh '35
 Gordon P. West '67
 J. Robert Wisely '15
 John D. Wilkerson '41
 J.B. Wilson '27
 Robert A. Wilson '32
 Robert W. Wolf Dec. '47
 Arthur P. Woolfolk '20
 John W. Yaw '39
 D.A. Young '22

In this Report of Annual Giving we proudly list the names of the alumni, friends, parents, organizations, corporations and foundations who gave so generously during the 1969-70 Annual Giving campaign. We hope that through this publication those whose names appear will be accorded a measure of the recognition they so well deserve. If your name does not appear or is incorrectly recorded, we ask your forgiveness and request that you provide us with the correct information.

1969-70 Alumni Fund

The Rose Alumni Fund set an all-time record of \$86,379 during the recently completed 1969-70 campaign.

Under the chairmanship of William R. Gray (August, 1950), the fund saw 45.7 per cent of the alumni contributing directly to the Alumni Fund during 1969-70 for a whopping \$15,000 increase over the fund of a year ago. Thirteen classes had 60 percent or better participation in the Fund.

Moreover, total contributions from alumni to all phases of the Rose Development Program amounted to more than \$175,000, underscoring the kind of alumni loyalty and support that has made Rose what it is today.

Honor Classes

Class

'05	(Owen L. Wood, Class Agent).....	100%
'07	(Carl G. Plank, Class Agent).....	70%
'10	(Carl G. Plank, Class Agent)	66.7%
'11	(Carl G. Plank, Class Agent).....	66.7%
'13	(Albert F. Brennan, Class Agent)	61.5%
'14	(J. Burch Tygart, Class Agent)	70%
'15	(Ed J. Hegarty, Class Agent)	62.5%
'18	(Chauncey S. McKee, Class Agent)	80%
'19	(Simon Werbner, Class Agent).....	68.8%
'20	(Herbert Briggs, Jr., Class Agent).....	72%
'21	(Robert E. Sewell, Class Agent).....	82.3%
'22	(William R. Dedert, Class Agent).....	67.8%
'24	(Sam S. Forsythe, Class Agent)	68%
'25	(O.W. Motz, Class Agent).....	77.4%
'29	(Henry T. Nancrede, Class Agent)	75%
June '47	(Ralph A. Mitchell, Class Agent)	61.5%
'52	(Morris Griffiths, Class Agent)	62.5%
'59	(John C. Fenoglio, Class Agent).....	64.8%

'94

*Frederick Hildreth

'01

In Memory of Harry A. Schwartz

'02

Edw. Lindley Jones

1 Contributor

Percentage Contributors - 50.00

Living Alumni - 2

'03

H. Edmund Wiedemann

John P A Williams

2 Contributors

Percentage Contributors - 50.00

Living Alumni - 4

'04

Ferdinand W. Hahn

Class Agent: Carl G. Plank

1 Contributor

Percentage Contributors - 25.00

Living Alumni - 5

'05

Donald H. Atherton

C. Brenton Cook

John S. McBride (D.)

George H. Pfeif

Owen L. Wood

Dudley D. Wright

Class Agent: Owen L. Wood

6 Contributors

Percentage Contributors - 100.00

Living Alumni - 5

'06

John W. Cannon

Robert B. Evans

* John M. Rotz

* Hal E. Wilkins

* Carl Wischmeyer

Class agent: Carl G. Plank

5 Contributors

Percentage Contributors - 55.55

Living Alumni - 8

'07

Delbert Kay

*Don McDaniel

Raymond J. McKenna

Russell S. Sage

Chas. C. Scharpenberg

Howard C. Taylor

*Paul E. Turk

Class agent: Carl G. Plank

7 Contributors

Percentage Contributors - 70.00

Living Alumni - 11

'08

Arthur S. Hathaway

*O.L. Stock

Ottiwell Wood

Class agent: Carl G. Plank

3 Contributors

Percentage Contributors - 37.50

Living Alumni - 11

'09

Henry J. Bangert

Glenn M. Curry

H. Wayne Curry

Harry B. Hammond

W. Rolland Maddex

Edwin C. Read

Class Agent: Carl G. Plank

6 Contributors

Percentage Contributors - 54.54

Living Alumni - 11

'10

Nathan A. Bowers

Carl G. Plank

Class Agent: Carl G. Plank

2 Contributors

Percentage Contributors - 66.66

Living Alumni - 3

'11

William E. Baker

Everett E. Black

Ernest C. Bradford

W. Lindsay Clore

Herbert C. Offutt

Robert T. Reinhardt

* Wilbur B. Shook

*J.M. Tilley

Class Agent: Carl G. Plank

8 Contributors

Percentage Contributors - 66.66

Living Alumni - 9

'12

C. Owen Dodson

Richard Fishback

Donald M. Hubbard

W. Scott Mace

James E. Spindle

Harry C. Uhl

Frank H. Wente

Henry L. Yingling

Walter K. Voss

Class Agent: Jerry H. Service

9 Contributors

Percentage Contributors - 56.25

Living Alumni - 15

'13

Albert F. Brennan

Maurice R. Denny

* C. "Dolly" Gray

Earle Hughes

Davis Levi

L. W. Lewis

Richard D. Madison

Raymond M. Ostrander

Class Agent: Albert F. Brennan

8 Contributors

Percentage Contributors - 61.53

Living Alumni - 12

'14

Vere S. Calvin

George M. Derr

Joseph S. Gillum

James T. Hallett

Kenneth E. Lancet

Chester E. Moore

J. Burch Tygart

Class Agent: J. Burch Tygart

7 Contributors

Percentage Contributors - 70.00

Living Alumni - 11

'15

*Edward D. Brauns
Ruel F. Burns Sr.
Charles E. Downing
Thomas E. Drake
Samuel M. Fink
Lawrence D. Gwinn
Edward J. Hegarty
Herman E. Mayrose
Warren F. Turner
* Hugh E. Wallace
J. Robert Wisely

Class agent: Edward J. Hegarty

11 Contributors
Percentage Contributors - 62.50
Living Alumni - 16

'16

Joseph H. Carter
Ralph E. Finley
F. Carr Goldsmith
David W. Hite
George M. Maier
Allen D. Merrill
Ralph A. Stuart
Robert A. Weinhardt

Class Agent: David W. Hite

8 Contributors
Percentage Contributors - 42.10
Living Alumni - 20

'17

Elmer O. Austermler
Thomas M. Evans
Edgar N. Goldstine
Henry C. Gray
Harry W. Knox
Wayne K. Self
James L. Weeks

Class Agent: Thomas M. Evans
7 Contributors
Percentage Contributors - 46.66
Living Alumni - 15

'18

Leroy Allen
Richard F. Bergmann
Erland B. Cornell
Paul B. Curtis
Lix Da Cunha
C. Ray Decker
Charles K. Failing
Chester W. Falls
Carl E. Geiger
Harry J. Harbulak
Leslie J. Heedwohl
George B. Henry
Robert P. Long
Chauncey S. McKee
John W. Mikels
Julian A. Vrydagh
John A. Wagner
James A. Wildermuth



William R. Gray '50 (left), chairman of the 1969-70 Rose Alumni Fund, admires a plaque which will recognize the class from each decade with the highest percentage of its members contributing to the Alumni Fund. Referee for the friendly competition is Terrence R. Barton (right), Director of Alumni Affairs.

Elmer F. Williams
Andrew Yatsko

Class Agent: Chauncey S. McKee

20 Contributors
Percentage Contributors - 80.00
Living Alumni - 24

'19

Benjamin F. Anthony
Chester H. Cortelyou
Frederick M. Crapo
Dewitt P. Cromwell
Herschell A. Hearn
Alexander P. King
Ivan S. Mendenhall
Aaron W. Richardson
Lester S. Stinson
Hal B. Tyler
Simon Werbner

Class Agent: Simon Werbner

11 Contributors
Percentage Contributors - 68.75
Living Alumni - 19

'20

Herbert Briggs, Jr.
T. Andrew Brophy
George L. Brown
William C. Bryan
Jerome D. Farmer

Decade Leaders

1900-09
'05--100%

1910-19
'18--80%

1920--29
'21--82.4%

1930-39
'35--57.7%

1940-49
June '47--61.5%

1950-59
'59--64.8%

1960-69
'64--44.1%

M. G. Flesher
Paul J. Grafe
Herman J. Lauterbach
Donald C. Maxwell
Whitecomb W. Moore
Walter L. Osmer
Fred M. Pence
Frederick B. Ray
Rex J. Self
Stuart C. Stimson
Arthur P. Woolfolk
Clift W. Young
C. Frank Schilt

Class Agent: Herbert Briggs Jr.

18 Contributors
Percentage Contributors - 72.00
Living Alumni - 25

'21

George R. Armstrong
Ray L. Biller
William H. Bruning
Edwin H. Carnarius
Hubert T. Goodman
Lloyd Greenebaum
Edward F. Jaenisch
William H. Junker
Sidney Reibel
Edward R. Ronald
Carl W. Schroeder
Robert E. Sewell

Charles R. Voges
Irvin R. Weir

Class Agent: Robert E. Sewell

14 Contributors
Percentage Contributors - 82.35
Living Alumni - 18

'22

Harold D. Brown
W. Ernest Danner
Kenneth L. Deblois
William R. Dedert
Hal H. Dronberger
Albert D. Dunlap
Joseph A. Engelhard
Donald L. Griffith
R. K. Hartsock
Ernest O. Hunt
*Harold C. Moench
Henry Y. Offutt
Hubert E. Reed
D. Lester Reinhard
Ernest C. Scott
Malcolm C. Scott
Eubert F. Taggart
William C. Turner
Eugene S. Whitlock
Willis E. Williams
D.A. Young

Class Agent: William R. Dedert

21 Contributors
Percentage Contributors - 67.74
Living Alumni - 30

'23

Joseph W. Anstead
Ralph B. Bennett
Eugene C. Brown
Robert O. Cash
James B. Connelly
Kenneth E. Cook
Herbert A. Field
Arthur Griepentrost
Richard W. Hager
Herman H. Heck
Robert T. Hendrich
H. J. McDargh, Jr.
Allen J. Weinhardt
Edwin H. Wolff
Albert E. Woollen
Charles E. Daniels
Clyde R. Ellis

Class Agent: Allen J. Weinhardt

17 Contributors
Percentage Contributors - 54.83
Living Alumni - 31

'24

Franklin F. Bogardus
Samuel S. Forsythe
Charles G. Haupt
Harold B. Hood
William F. Lisman

L. Francis McCullough
Leon S. Maehling
F. Ray Martin
*George O. Rall
Frederick Schroeder
Alex L. Sherwood
Carson W. Simms
Maxwell J. Skeeters
John T. Stone
William H. Waltman
Clay P. Watson
Floyd E. Watson

Class Agent: Sam S. Forsythe

17 Contributors
Percentage Contributors - 68.00
Living Alumni - 26

'25

Clarence A. Anderson
Robert H. Andrew
John M. Barr
Zachary X. Bennett
Roger H. Bolin
Fred L. Bradford
Richard P. Brettell
Carl E. Dahlquist
Orville M. Dunning
Milton E. Feldstein
Raymond V. Fischer
Adam K. Grafe
Henry R. Iker
W. Roscoe McIntosh
Frederick L. Matteson
Hubert H. Merrill
John W. Moorhead
O. Wayne Motz
Howard L. Newton
Joseph H. Reifenberg
E.F. Rickelman
Edwin Thompson
In Memory of Nathan L. Whitecotton
Theron A. Yager

Class Agent: O. M. Motz

24 Contributors
Percentage Contributors - 77.41
Living Alumni - 31

'26

C.W. Ellis
Edward F. Kelley
James E. Letsinger
Harvey H. Mayrose
Theodore S. Moench
Ernest P. Pifer
Victor E. Schlossberg
Bruce R. Walsh
E. Wayne Watkins
John S. Wells
Daniel R. Werner
Harry L. Willson
J. Nelson Shepherd

Class Agent: Victor E. Schlossberg

13 Contributors
Percentage Contributors - 54.16
Living Alumni - 25

'27

Richard C. Brown
Ralph T. Davy
John A. Fairhurst
Lowell E. Muehler
Colonel A. Swalls
Robert E. Wade
Baird F. West
J.B. Wilson
Charles H. Hunnell
Fred E. Nicoson
C.S. Trigg

No Class Agent

11 Contributors
Percentage Contributors - 42.30
Living Alumni - 29

'28

Alexander Babillis
G. Lee Berry
Hubert S. Carmack
Claude C. Cash
James E. Goddard
John T. Harvey
Homer E. Holmes
*Wayne Kehoe
William P. Leake
Virgil E. Martin
George J. Mason
John I. Mendenhall
James F. Payne
Roy D. Reece
Raymond Schauwecker
Robert F. Taggart
Wendell A. Watkins
Harold A. York

Class Agent: Harold A. York

18 Contributors
Percentage Contributors - 41.86
Living Alumni - 44

'29

Fred O. Andrews
Ralph C. Bailey
Albert E. Baker
Theron S. Bell
Granville P. Brosman
Galen B. Clark
John C. Cooley
John A. Derry
A. Wayne Dicks
Robert H. Downen
Kermit H. Glazner
George E. Hadley
Raymond P. Harris
Volney A. Hutchinson
Herschel E. Hylton
Herman A. Moench
Henry T. Nancrede

Collins W. Raines
Carl W. Scharf
Abe Silverstein
Lafayette Stewart
David L. Thompson
J. Robert Vendel
Max S. White

Class Agent: Henry T. Nancrede

24 Contributors
Percentage Contributors - 75.00
Living Alumni - 33

'30

James S. Brevoort
James H. Corp
Andrew H. Davy
Carl E. Ehrenhardt
Charles A. Lotze
Clyde S. Marsh
John J. O'Mara
Maurice L. Piker
Eugene H. Scofield
Morris T. Shattuck
Harry E. Stock
John W. Trueb

Class Agent: Maurice L. Piker

12 Contributors
Percentage Contributors - 35.29
Living Alumni - 34

'31

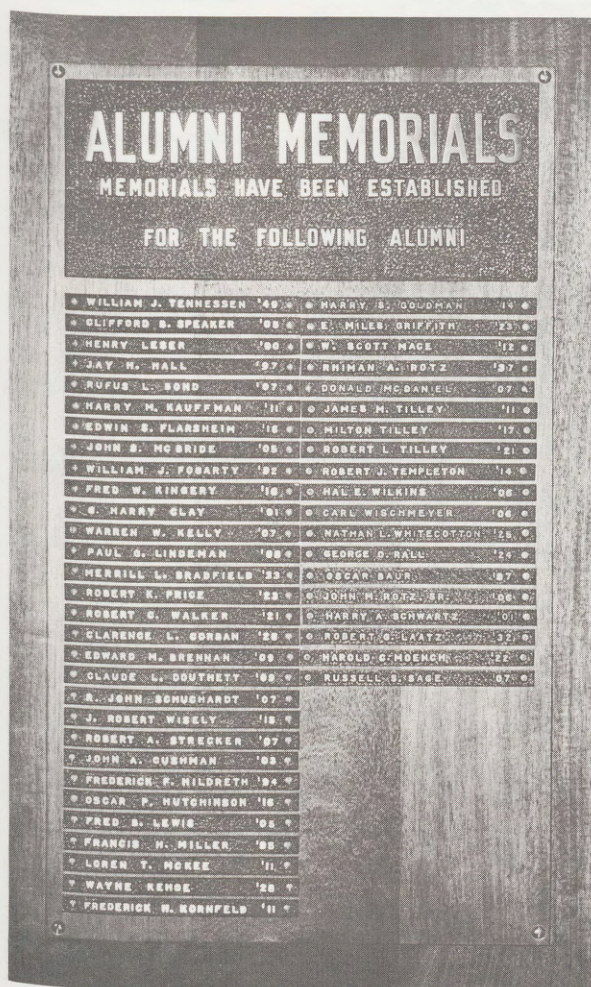
John D. Anthony
Anthony G. Blake
Samuel B. Dibble Jr.
K. Richard Garmon
Julius Hulman
Ernest G. Hurst
Paul E. Kunz
Harry J. Loving
Robert T. Mees
Lowell L. Ray
John F. Richardson
Frank J. Sabla
Frederic W. Scott
Donald T. Spangenberg
Allen G. Stimson

Class Agent: Robert T. Mees

15 Contributors
Percentage Contributors - 51.72
Living Alumni - 32

'32

Albert L. Ahlers
Frederick J. Bogardus
Myron J. Clark
Robert M. Clark
Wayne R. Dickerson
Robert J.D. Finfrock
Hans M. F. Fischer
George T. Hauer
William H. Himeline



Alumni Memorials have been established for a number of Rose men. The above pictured plaque is located outside the Chauncey Rose Alumni Room in Hulman Memorial Union and at the present time serves as a memorial to forty-nine graduates of the Institute. Arrangements for establishing memorials and memorial funds may be made by contacting the Development Office at Rose.

Charles E. Howard
Norman Hunt
*Robert G. Laatz
John H. Montgomery
George W. Naanes
John V. Niemi
Paul H. Sawyers
Russell V. Smith
C. Chester Stock
John E. Tonetti
G. Clyde Weber
Robert A. Wilson
Byron G. MacNabb

Class Agent:

22 Contributors
Percentage Contributors - 43.13
Living Alumni - 50

'33

William E. Bachelor
Robert L. Barr
James W. Cantwell
William F. Crawford
Paul R. Dierdorf
Wm. J. Fitzsimmons
Donald H. Greenfield
James F. Guymon
Wm. C. Heidenreich
Edward H. Hilgeman
Herbert W. Hylton
G.T. Lautenschlager
J. Dunlap McNair
Arthur O. Reinking
Irwin S. Rosenak
James C. Skinner
Edward G. Weinbrecht
Edwin J. Withers

Class Agent: J. Dunlap McNair

18 Contributors
Percentage Contributors - 40.90
Living Alumni - 44

'34

Russell E. Archer, Sr.
Howard C. Barnes
Noble C. Blair, Jr.
Stephen P. Cauley
Henry H. Douglas
Brent C. Jacob, Jr.
Harlan C. Johnson
F.J. Landenberger
Herbert A. McAninch
Frank Mansur
James I. Mason
A.J. Newsom
John A. Ritter
Paul R. Smith
George F. Stark
H. Loren Thompson
Richard K. Toner
Arthur W. Tuemler
W. Whitney Yost
Gene A. Zwerner

Class Agent: Russell E. Archer, Sr.

20 Contributors
Percentage Contributors - 47.61
Living Alumni - 45

'35

Albert L. Bard
John A. Bradley
Gordon L. Burt
Claude C. Dierdorf
William C. Eyke
John P. Giacometto
Jay F. Hall
Louis W. Heck
Arthur W. Hess
Russell R. Kerr
Albert V. McEowen
Karl L. Mason
John F. Mayrose
Paul C. Montgomery
Meritt F. Myers
Carl Nelson
William S. Pratt
Harold Reintjes
Francis H. Richardson
Harry H. Richardson
Virgil E. Shaw
Wayne G. Siegelin
P. Byrne Terhorst
Norman E. Tucker
Joseph B. Weaver
Ernest J. Welsh
John H. Welsh
Frederick W. Wiles
Robert T. Bernd
John E. Hartmann

Class Agent: John A. Bradley

30 Contributors
Percentage Contributors - 57.69
Living Alumni - 53

'36

James W. Campbell
William R. Creal
James D. Hufford
William E. Kasameyer
Charles E. Macdonald
Paul H. McKee
E. Kendrick Newton, Jr.
Robert Shattuck
John B. West

Class Agent: James B. Hufford

9 Contributors
Percentage Contributors - 25.71
Living Alumni - 35

'37

Stanley L. Cox
Clyde E. Cromwell
Paul E. Giffel
Harry J. Halberstadt
Albert W. Lotze, Jr.
Donald E. McCullough

J. Robert Penisten
 *Rhiman A. Rotz
 Robert I. Sears
 Walter R. Snedeker
 Jonathan Sonnefield
 John B. Stineman
 Carl R. Wischmeyer
 Edward J. Wodicka, Jr.

Class Agent: Clyde E. Cromwell

14 Contributors
 Percentage Contributors - 56.00
 Living Alumni - 24

'38

Wayne E. Alexander
 Wendell E. Carroll
 Richard E. Dennis
 Robert W. Dispennett
 Louis M. Eyermann
 Lawrence Giacometto
 John R. Hayes
 John E. Lindeman
 Clemens W. Lundgren
 John R. Merrifield
 Ora E. Myers, Jr.
 Robert D. Prewett
 Adam H. Romeiser
 William A. Serban
 John E. Whitesell
 Claude J. Zinngrabe
 John B. Hunter

Class Agent: William A. Serban

17 Contributors
 Percentage Contributors - 51.51
 Living Alumni - 35

'39

Richard D. Alterkruse
 Robert J. Burger
 Edward A. Coons
 Frank G. Doenges
 Robert S. Kahn
 Robert N. Ladson
 Victor W. Peterson
 John R. Pies
 Joseph E. Ross
 Edward O. Spahr
 Luther L. Yaeger
 John W. Yaw
 A. Tom Merrill
 Morris S. Stout

Class Agent: Robert S. Kahn

14 Contributors
 Percentage Contributors - 51.85
 Living Alumni - 27

'40

Maurice W. Cannon
 Maurice C. Fleming
 John A. Hart
 Milton M. Hosack
 Maurice W. Johns
 Avery C. Kelsall

Lloyd O. Krause
 Willard V. Louthen
 C.D. Montgomery
 Richard A. Mullins
 Frank G. Pearce
 John W. Quinn
 Robert M. Ripple
 Earl O. Swickard, Jr.
 J. Edward Taylor
 Vernon E. Whitehouse
 Allen T. Wilson
 William H. Bradley

Class Agent: Richard A. Mullins

18 Contributors
 Percentage Contributors - 54.54
 Living Alumni - 34

'41

William J. Anderson
 Brig. Gen. John Appel
 H. Rolland Buell
 John L. Combs
 Joseph W. Dreher
 Simon P. Gary
 George C. Harper, Jr.
 Raymond C. Hogan
 Edward J. Klecka
 James A. Lohr
 Carlton L. McWilliams
 Robert D. Phelps
 Ross S. Pyle
 John R. Roberts
 George R. Schull
 James E. Shake
 John D. Wilkerson

Class Agent: Joseph W. Dreher

17 Contributors
 Percentage Contributors - 41.46
 Living Alumni - 42

'42

James R. Brown
 Martin J. Cavanaugh
 Ray K. Chalfant
 David M. DeMaree
 Eugene Hess
 Irvin H. Keeler
 Robert S. King
 Gene F. McConnell
 Hulit L. Madinger
 John G. Mehagan
 Charles S. Meurer
 Lucien Nelson
 Clay W. Riley
 Robert W. Rockwood
 Dwaine L. Woolsey
 William E. Worley

Class Agent: Earl F. Michaels

16 Contributors
 Percentage Contributors - 34.04
 Living Alumni - 47

'43 February

Fred G. Berghoefer
 Gene A. Coltrin
 Frederick J. Hill
 Robert W. Hodgers, Jr.
 Howard H. Irvin
 Alan W. Ker
 Jack L. Loser
 John E. Metz
 Richard C. Mott
 John T. Newlin
 Joseph J. O'Connell
 Robert R. Pease
 Michael W. Percopo
 William G. Prescott
 Richard H. Raab
 Harmon E. Rose
 William F. Rumbley
 Wayne C. Shanks, Jr.
 Charles T. Thomas
 Richard Van Kempema
 William T. Weinhardt
 John W. Welsh
 William J. Kahn

Class Agent: Robert R. Pease

23 Contributors
 Percentage Contributors - 46.00
 Living Alumni - 51

October

Kenneth R. Allison
 Lloyd A. Buchalter
 Robert P. Davis
 Robert K. Drake
 George A. Edwards
 Richard C. Ellsworth
 Harry D. Frye
 James R. Garrett
 Vinton B. Haas, Jr.
 Dwight P. Heath
 W. David Helmick, Jr.
 William R. Kniptash
 Raymond I. Kopan
 Donald T. Lo
 Gordon MacBeth
 Charles R. McKinney
 J. Francis Pfrank
 E. Harold Stanfield
 John A. Valente
 Joseph M. Valentine
 Frank H. Winters
Class Agent: Wm. R. Kniptash

21 Contributors
 Percentage Contributors - 48.83
 Living Alumni - 44

'44

Donald E. Alexander
 Robert H. Dinkel
 James H. Hanes
 Arlis J. Hief
 Paul Kaplan

L. Gene Landes
 Richard C. Milholland
 Robert N. Thompson
 B. Vonderschmitt

Class Agent: Donald E. Alexander

9 Contributors
 Percentage Contributors - 45.00
 Living Alumni - 23

'45

Herbert R. Bailey
 William G. Dedert
 Stephen W. Liddle
 Fred C. Maienschein
 William C. Waldbieser

Class Agent: Stephen W. Liddle

5 Contributors
 Percentage Contributors - 41.66
 Living Alumni - 12

'46

Robert G. Bannister
 Theodore Blickwedel
 Edgar R. Carpenter
 Robert L. Kylander
 Philip B. Loring
 Hugh W. Morris
 Harmon I. Shaw
 Robert D. Strum

Class Agent: Robert G. Bannister

8 Contributors
 Percentage Contributors - 40.00
 Living Alumni - 20

'47 March

Carl M. Carlson
 Ralph R. Dinkel
 Richard F. Rieman
 Willis E. Rose
 Keith A. Sutton
 Charles C. Weibel
 Robert A. Weinhardt
 John R. White

Class Agent: Ralph A. Mitchell

8 Contributors
 Percentage Contributors - 53.33
 Living Alumni - 15

June

Charles J. Bashe
 Paul A. Benning, Jr.
 C. Phillip Bowne
 Francis M. Drury
 Robert W. Flack
 Thomas F. Havens
 Richard W. Hickman
 John King
 John W. Krampe
 Ralph A. Mitchell
 Richard G. Olson



Class agents play an important part in the Alumni Fund. On hand for a meeting of Class Agents were Bernard Erickson Jan. '49, Ray Frischkorn '65, Dennis Fritz '68, Jack Fenoglio '59, Donald Alexander '44, Chauncey McKee '18, Terrence Barton, alumni director, and David Hite '16. Seated are James P. Laughlin, July '49 and Wayne Loving '50.

John C. Stewart
R. Donald Tyler
Robert L. Voges
James M. Wade
John R. White

Class Agent: Ralph A. Mitchell

16 Contributors
Percentage Contributors - 61.53
Living Alumni - 31

September

William G. Cornell
William E. Tingley

Class Agent: Ralph A. Mitchell

2 Contributors
Percentage Contributors - 18.18
Living Alumni - 11

December

Roy R. Baker, Jr.
George W. Brand
H.E. Broemmelsiek, Jr.
William N. Brown
William R. Buechler
Russell C. Cox
William D. Fowle
Bernard C. Hoilman
James C. Hoskinson
Dale O. Jeffers

Herbert E. Katz
John E. Loomis
Edward T. Mabley
William T. Maddock
John W. Murdock
Frederick R. Pence
Lowell L. Smith
Wallace L. Steuerwald
Robert E. Supp
Richard H. Swartz
Robert W. Wolf

Class Agent: Ralph A. Mitchell

21 Contributors
Percentage Contributors - 43.75
Living Alumni - 52

'48 March

Joseph L. Bisch
Thomas W. Cundiff
George Kyle
Frederick E. Mueller
Joseph T. Neill
George T. Wolf
LCDR. Wm. K. Sharpe

Class Agent: John A. Bartholome

7 Contributors
Percentage Contributors - 41.17
Living Alumni - 19

June

Frederick M. Lundgren

Class Agent: George R. McNeil

1 Contributor
Percentage Contributors - 20.00
Living Alumni - 5

October

Leonard R. Albers
John A. Bartholome
John W. Bryant
Richard P. Burandt
Malcolm H. Burdett
Hal C. Cultice
Albert Edwards
Charles V. Eshelman
Howard P. Freers
Milton J. Lowenstein
Richard J. McDaid
Francis X. McDonald
David C. Mitchell
William Monzel
John M. Nevins
Fredeick P. Ray
Frederick R. Ruble

Herbert B. Sliger, Jr.
Allen E. Smith
Rhilip R. Vance
Alfred A. Yee

Class Agent: John A. Bartholome

21 Contributors
Percentage Contributors - 42.85
Living Alumni - 54

'49 January

Otto C. Andres
Kenneth R. Arney
William B. Berling
George N. Blount
Harold J. Born
C. Lowe Bush
Jesse W. Cook
Harry Craig, Jr.
Robert E. Devlin
Frank W. Dorfmeier
Frank F. Eberhardt
Jack J. Ellis
Bernard E. Erickson
Robert M. Erskine
Victor H. Forsythe, Jr.
Gene Hart
C. Gordon Hayes

Paul C. Hill, Jr.
Ogdon A. Kiefer
Carl F. Leshner
Wayne E. McCoy
Frederick C. Mikels
Gerald C. Miller
Tetsuichi Mitsuda
David M. Mullen
Frank P. Oglesby
Ben A. Richardson
Joseph B. Ross
Fredrick F. Sherry
Leonard H. Silverman
Allen S. Stewart
William J. Tennesse D
John H. Todd
James L. Worick

Class Agent: Bernard E. Erickson

34 Contributors
Percentage Contributors - 53.12
Living Alumni - 65

April

Norman F. Bell
Charles G. Bethge
Edward C. Bockhold
William E. Brown
Robert E. Campbell
Eugene E. Ervin
James H. Groves
Robert J. Crusis
James F. Haring
Joseph P. Hart
John A. Humble
David Jarett
Roland T. Kelley
Philip A. Kranz
John G. Martis
Edward M. Meagher
Leroy W. Mitchell
William J. Olson
Albert W. Reed
Robert L. Royer
Michael G. Schaefer
William A. Schumann
S. Don Shimazu
George H. Stearley
John Wargo, Jr.
John M. Weibel
Norman R. Weller

Class Agent: John A. Humble

27 Contributors
Percentage Contributors - 48.21
Living Alumni - 60

July

Robert M. Baugh
Joseph V. Bonucchi
Robert G. Cassidy
Donald R. Coughanowr
Cyrus W. Cox
Charles W. Foreman
Robert U. Grant
C. Nelson Havill
Thomas G. Jones

Louis F. Kelley
James P. Laughlin
C. Gene McGlone
Jack K. Matthews
Malcolm R. Meurer
Joseph Osman
Harry W. Plew
James L. Rogers
Kenneth R. Sheetz
Fred K. Staats
H. Paul Walton
Lester W. Wright

Class Agent: James P. Laughlin

21 Contributors
Percentage Contributors - 40.38
Living Alumni - 53

November

Fred W. Burdett
Cecil E. Cook
Robert W. Exline
Charles C. Gambill
Paul Gottfried
Fred J. Gradous, Jr.
Carl R. Hildebrand
Donald L. Moore
James W. Schwier
Robert W. Schwier
James G. Simms
Robert S. Smith
Ralph L. Trimble
Wayne F. Walter
John D. Winters
Robert F. Woody
Sydney L. Zeid

Class Agent: Herbert Patterson

17 Contributors
Percentage Contributors - 37.77
Living Alumni - 50

'50 February

Joseph D. Power
Lawrence E. Stevens
John W. Waite

Class Agent: Wayne L. Loving

3 Contributors
Percentage Contributors - 30.00
Living Alumni - 12

August

Robert R. Atherton
Robert G. Cassidy
Max G. Clingerman
George W. Eddy
William R. Gray
Andrew R. Hallden
Denzil L. Hammond
Robert A. Haswell
Alfred L. Johnson
Richard J. Kuehl
Ronald A. Lange

Thomas D. Leathers
Wayne L. Loving
Samuel J. Lynch
Jodean Morrow
Everett C. Moseman
Joseph D. Mummert
Charles C. Olmstead
Harold F. Osterhoudt
Donald C. Owens
Bill G. Pittman
Kenneth W. Reed
Robert F. Ricketts
James E. Robinson
Albert C. Seiler
Harold E. Skelley
Floyd C. Smith
Paul D. Smith
Donald O. Springman
Charles B. Strickland
Raymond D. Summerlot

Class Agent: Wayne L. Loving

31 Contributors
Percentage Contributors - 50.81
Living Alumni - 62

'51

Raymond Baker, Jr.
Frederick W. Garry
Robert G. Greminger
Alan L. Keal
E. Lee Keith
Francis L. McCormick
William R. McKeen
Guy H. Revesz
Robert G. Rinker
Eugene N. Schroeder
Dale H. Scott
Seibert D. Thomas
Bernard D. Vail
Carlyle H. Wokasien
Harold F. Spence

Class Agent: Carlyle H. Wokasien

15 Contributors
Percentage Contributors - 23.43
Living Alumni - 66

'52

Earl W. Albin
Philip E. Bracht
Ronald L. Brunner
Robert L. Davis
James D. Dunlop II
Richard L. Englum
Robert P. Failing, Jr.
Mac Fehsenfeld
Allen Forsaith
Philip C. Gardner
Bernard C. Goy
Morris L. Griffiths
Thomas U. Grinslade
Russell E. Hailstone
Donald J. Heath
Robert E. Heckelsberg
Norman Hessler

Robert E. Johnson
Warren W. Jones
Robert F. Kriz
Larry F. Leonard
Leo E. Little
Lloyd A. McGrew
Paul T. Malone
Robert L. Metz
Robert C. Miller
Robert L. Miller
William L. Miller
Roy A. Moody
James I. Moulton
Andrew P. Mudron
John C. Pirtle
William C. Post
L. Duane Pyle
S. Bernard Robinson
Chris A. Scharpenberg
Von Roger Shanks
Allan W. Stiles
Gunter L. Theil
Richard D. Thomas
Robert J. Waldbieser
G. Richard Walls
Glenn R. Webster
Clyde F. William
Edward S. Wyatt

Class Agent: Morris Griffiths

45 Contributors
Percentage Contributors - 62.50
Living Alumni - 77

'53

Vernon L. Bischopink
Alfred D. Bosley, Jr.
James F. Burgett
Robert R. Dedert
William J. Ennis
Herbert L. Gatewood
Harry A. Harris
*Gurdon P. Huntington, Jr.
James E. Ingle
Robert K. Kawano
William H. Kuykendall
William W. Luce
Richard A. Myhre
W. Donald Nelson
Howard K. Pedigo
Robert W. Ray
Thomas P. Reifenberg
John R. Rinker
William J. Toeppe
Samuel J. Woolley

Class Agent: Richard A. Myhre

20 Contributors
Percentage Contributors - 37.03
Living Alumni - 57

'54

Hubert W. Evinger
William B. Fowler
Donald W. Fyfe
W. Rex Hauser
Derald E. Heady

Ernest L. Hillman
Chas. W. Hirschfield
Rex D. Leonard
James B. Matthews
Owen H. Meharg
Robert D. Miller
Lawrence L. Ogborn
Robert E. Rader
John W. Sawyers
James L. Schwartz
John D. Scott
LCDR. Ronald E. Smith
Erwin A. Ulbrich, Jr.
Edgar S. Utterback, Jr.

Class Agent: Owen H. Meharg

19 Contributors
Percentage Contributors - 52.77
Living Alumni - 37

'55

William D. Boring
Allen J. Furlan
John W. Gregory
David W. Hackett
Louis A. Hageman
Beuford C. Hall, Jr.
Samuel W. Hart
Phillip G. Hermeling
Jack R. Hughes
Wilfred Johnson
Phillip B. Kirk
Samuel J. Kowal
Lincoln M. Lai
Robert J. Lebrock
Donald M. Lewis
Ralph A. Llewellyn
James L. Lott
James E. McCulloch
Gerald H. McClone
Merritt G. Marbach
Robert E. Mogle
Duray Potter
Frank L. Rendaci
George S. Ross
George R. Runyan
James H. Sherman
Gene M. Stoker
William E. Supp
Joe A. Williams
Donald C. Wood

Class Agent: James H. Sherman

30 Contributors
Percentage Contributors - 54.54
Living Alumni - 55

'56

John H. Bradshaw
Drysdale F. Brannon
John S. Chinn
Myron J. Clark, Jr.
Jack L. Dodson
William S. Gaither
William H. Guard
W.F. Johanningsmeier

Philip S. Jones
Roy J. Kalen
Ralph D. Lockhart
Walter R. McIndoo
Owen B. March
Paul R. Mason
John M. Newgent
Francis H. Potts
Francis Przybylski
Robert E. Randolph
John R. Rhodehamel
Dale E. Roeschlein
Walter A. Schramm
John C. Scott
P. Carter Smith
Arthur W. Sutton, Jr.
Robert W. Terrell
Ronald W. Vahle
S. Terrell Vanover
Robert N. Young

Class Agent: Walter R. McIndoo

28 Contributors
Percentage Contributors - 40.00
Living Alumni - 76

'57

John A. Bizal
Robert E. Bright
Harold D. Brown, Jr.
Robert E. Burtner
James E. Calabro
Howard L. Chambers
John H. Derry
Jimmie K. Dyer
Eugene R. Feagler
David C. Flock
Jack L. Foltz
James S. Freers
Leroy J. Friel
Fred W. Goetsch, Jr.
James L. Griffith
Velmar E. Howard
Henry E. Jackel
Charles W. Kallis
Floyd A. Koontz
Robert M. Letsinger
Paul H. Lewis
Jerry R. Marlow
James V. Martin
Ronald R. Meredith
David J. Moeller
Richard A. Newgent
Robert L. Overpeck
Gerald C. Rose
Paul K. Sharp
William R. Small
George B. South
Robert J. Stearley
Robert L. Travis
William N. Waggener
William W. White, Jr.
Jack A. Wilcox

Class Agent: J.K. Dyer

36 Contributors
Percentage Contributors - 42.85
Living Alumni - 86

'58

Joseph E. Blastic
Jerome L. Blickhahn
Ernest W. Boodt
Paul B. Cella III
A. Thomas Clark, Jr.
Leon Mike Cole
Kenneth L. Denney
Kenneth P. Duncan
P. Toby Eubank
Robert A. Fowler
John C. Gaughan
Norman C. Grimshaw
Richard K. Irely
Larry C. Kirts
Charles F. Kleptz
E. Crone Knoy
Frank L. Larr, Jr.
Gary L. Leavitt
William D. McKee
Thomas R. McPherron
James L. Massey
Gerry A. Mattern
Glen A. Miles
Robert E. Newby
James C. Oakes
William H. Payne
Richard Potzler
Thomas L. Reese
Ronald G. Reeves
Erick A. Ressler
Robert E. Scofield
Wilbur J. Steele
George R. Stockelman
James W. Stott
Robert G. Sutton
Richard L. Trueb
Donald R. Weidner
William W. Weil
Dale A. White
John R. Williams

Class Agent: John E. Blastic

40 Contributors
Percentage Contributors - 50.00
Living Alumni - 83

'59

S. Eugene Amick
David R. Bailey
William R. Bock
Warren W. Bowden
Joseph L. Bronnert
Barlow W. Brooks, Jr.
Richard L. Brown
William Campbell
Robert S. Coma
John R. Davis
Robert A. Dinning
Marlin G. Eaton
John C. Fenoglio

Raymond H. Gompf
Hugh A. Griffin
Robert W. Hall
Charles E. Hamilton
David R. Hendricks
Carl T. Herakovich
Marlan D. Hildenbrand
W.K. Hollingsworth
Robert G. Jackson
John W. Jardine
Donald H. Johnson
John S. Kennedy
James A. Kleptz
William E. Kuchar
Laurence J. Logue
Jerry L. Manley
James L. Mills
Dan C. Mook
Clarence L. Munro
Jimmie E. Neal
H. James O'Donnell, Jr.

Berndt L. Olson
Flavian Reising, Jr.
James E. Richardson
Jerry V. Schmits
Donald C. Slack
Richard D. Smith
Jan R. Sonner
David W. Spoonamore
John W. Stearley
Gary R. Wetmore
Larry R. Wilson
Thomas E. Hale

Class Agent: John C. Fenoglio

46 Contributors
Percentage Contributors - 64.78
Living Alumni - 76

'60

James E. Baker
R. Larry Berger
Henry E. Bradley
Leroy Brothers
Robert A. Crisp
Jacque R. Dhooze
Franklin E. Fisher
Barton L. Gronberg
Robert H. Honegger
C. Theodore Jaenke
Edmund W. James
Ronald R. Jennings
Jerry M. Johnson
Robert R. Johnson
William B. Johnson
A. Ross Kuykendall
Harold E. Miller
James R. Montgomery
Donald W. Moyer, Sr.
William C. Perkins
James H. Phillips
Gary W. Phipps
William H. Schaper
Elwood P. Stroupe
James M. Tubby

Joel R. Waldbieser
Sherman S. Smith

Class Agent: C. Theodore Jaenke

27 Contributors
Percentage Contributors - 41.53
Living Alumni - 68

'61

Russell E. Archer, Jr.
Phillips Ballantyne
Stephen Dee Burton
William A. Carter, Jr.
Don L. Dekker
William R. Fenoglio
Frank T. Feutz
Robert E. Franzwa
James K. Gates
John H. Gilmour, Jr.
Herbert J. Gladden
Warren K. Griffith
Vernon R. Gross
Jerry D. Heiniger
Donald S. Herrin
Ronald Higginbotham
Meador T. Hill, Jr.
Thomas J. Hormuth
Robert D. Michael
Carl B. Muhlbachler
Larry W. Myers
Larry L. Pitt
E Dean Powell
Dale A. Raquet
John R. Ray
Jack E. Schreiner
Charles W. Smith
Ronald L. Staggs
William M. Steele
John E. Tindall
Robert H. Turecky
William H. Yochum, Jr.
Frank J. Zone

Class Agent: Jack E. Schreiner

33 Contributors
Percentage Contributors - 44.00
Living Alumni - 76

'62

Jerry D. Badger
Rodney K. Bogue
Lester R. Carter
Morris L. Cleverley
Vern W. Fellows
Carl B. Garmong
Michael W. Gilpatrick
Maj. Jerry L. Gregg
Jerome E. Hahn
Andrew P. Hrezo
Richard Landenberger
Charles C. McCoy
James T. Malone
Clyde R. Metz
Richard L. Mills
Dale F. Oexmann

William O. Rimmel
Brent E. Robertson
Thomas H. Rose
J. Richard Schafer
Joseph W. Snyder
Alfred L. Story
Fred Terry
Richard H. Thompson
Donald C. Todd
John S. Walden
Ralph J. Wardle
Frederick Wright

Class Agent: Brent Robertson

28 Contributors
Percentage Contributors - 43.75
Living Alumni - 66

'63

Larry A. Anderson
Don C. Augenstein
Edward J. Blahut II
Thomas W. Bosworth
Jay P. Conniff
Billy Crynes
Ronald L. Danilowicz
Richard Daugherty
David A. Dumford
William J. Edmons
Richard B. Esker
Max E. Goodwin
Terry M. Hinshaw
W. Allen Jannasch, Jr.
Dennis Karwatka
Robert S. Kern
Louis L. LaFlamme
Raymond J. Lepp
Robert D. Lovell
Max W. Lunsford
Kenneth H. Miller
Richard Moench
William B. Nicewanger
Jerry T. Nickerson
John M. Portlock
Richard C. Rapson, Jr.
Gary M. Reynolds
Merle D. Rice
Paul F. Richardson
Victor L. Risch
Larry W. Shaffer
Ronald J. Susemichel

Class Agent: William B. Nicewanger

32 Contributors
Percentage Contributors - 40.50
Living Alumni - 81

'64

Robert N. Coltharp
Jack D. Cox
Edward K. Downey
Bryce D. Drake
Mars J. Gralia II
Lawrence B. Hall
Larry E. Hall
Stephen J. Hoffman

Bruce M. Kopf
William L. Kovacs
Dennis L. Lawson
Robert E. Leonard
Vaughn R. Love
David E. Lovelace
Jimmy L. Lunsford
Robert A. McKnight
Dennis W. Moore
Larry G. Morgan
John A. Rohr
E. Lindley Ruddick
John D. Sauser
James W. Schulz
Charles P. Spencer
David G. Staggs
John Stewart
John F. Stineman
John Stockton
William K. Teegarden
Harry W. Templin
Charles T. Terry
Michael D. Thomas
Joseph E. Thurston
Robert E. Valle
George I. Wagner
James D. Watkins
E. Allen Wright
John Zdenek
Gerald F. Zinngrabe

Class Agent: Jack D. Cox

38 Contributors
Percentage Contributors - 44.18
Living Alumni - 85

'65

William B. Allard
Michael I. Atkins
William L. Bergstrand
Robert C. Blahut
John W. Boyer
Jim Lee Brown
Peter B. Canalia
Gus F. Carroll
Donald L. Endsley
William E. Everson
Terrence L. Fenimore
James W. Francis
Elmer A. Guerri
Lowell G. Hardwick
Stanley W. Henson
David B. Holobaugh, Jr.
Stephen W. James
Evan H. Johnson
John A. Kuhn
William N. Kuschel
Jerry L. Massa
Donald D. Miller
David H. Nancrede
James R. Overdorf
Benedict R. Radecki
David Y. Rice, Jr.
Norman G. Schuld
Allen R. Stanley
Andrew D. Szilagyi
Ronald F. Turaski, Jr.

Glendon G. Williams
Ray Frischkorn
David L. Hussung

Class Agent: Ray Van Frischkorn

33 Contributors
Percentage Contributors - 34.02
Living Alumni - 103

'66

Jeffrey A. Barton
William M. Bess
Gilbert M. Bosworth
Jack R. Braun
Jeffrey F. Brugos
Steven P. Collier
John R. Delbaue
James L. Eddleman
Richard G. Foltz
Gordon A. Francis
Gary L. Funk
Dwight S. Garbe
Warren C. Gaskill
Ronald G. Gesell
William R. Goodwin
Larry D. Halstead
Ronald L. Haun
Edwin W. Jirousek
Richard W. Johansen
R. Jeffrey Keeler
John L. Klausman
Jeffrey I. Lackey
James W. Lane, Jr.
William J. Lanke
James G. Larsen
Danny W. Lenz
William R. Lewis
John F. Lynn
Neil M. Matsumoto
Robert E. Miller
James W. Moyer
Thomas H. Nehmzow
John R. Norris
Michael C. Redman
Kenneth E. Rich
Larry A. Sachs
Donald F. Schultz
Clifton L. Singleton
Peter G. Taylor
Gary L. Van Deman
George M. Williams
David T. Woodward

Class Agent: Scott A. Skjordahl

42 Contributors
Percentage Contributors - 35.00
Living Alumni - 131

'67

J. Bryan Carter
Jimmy L. Caughran
Darrell E. Deeds
Lawrence E. Duvall
James W. Engle
Philip R. Fassnacht
James R. Grundy

Donald A. Gunder
Graham R. Hacker
Richard E. Hammond
Paul S. Hannah
Dale E. Helms
Dexter L. Hill
William A. Holmes
James W. Kane
John W. Katzbeck, Jr.
David J. Kelton
Kenneth C. Kuntz
Richard T. Laubach
Robert F. Lewsader
Arthur P. McLaughlin
Gary D. Meek
James M. Mondabaugh
James B. Morehouse
Charles P. Morgan
Roger A. Nelson
Larry C. Oldham
Edward H. Onouye
Charles E. Risch
Eugene E. Rood
William O. Sibrel
Richard D. Snyder
Larry C. Sprouse
Thomas D. Stuebe
Raymond N. Viostko
Gordon P. West
James W. Zimmerman, Jr.

Class Agent: John W. Katzbeck, Jr.

87 Contributors
Percentage Contributors - 35.92
Living Alumni - 108

'68

Terry Agal
Dennis L. Beltz
Richard Bennett
Benny J. Bradburn
Stephen G. Carroll
Glenn R. Coleman
Tom Compton
Randall E. Drew
Thomas M. Duff
James B. Duzan
Ronald T. Fisher
Dennis D. Fritz
David L. Hagedorn
David Harshbarger
Rolf Hill
Alan F. Hoskin
Shu Yeh Howe
Robert H. Jones
Thomas E. Johnson
David A. Jonas
Michael H. Mefford
James C. Mercer
Stephen P. Mueller
Joseph C. O'Brien
Larry E. Plew
David Porat
Kenneth F. Rogers
Larry M. Rose
Kenneth Sands

Harold L. Schroer
James A. Scott
John L. Shambach
David J. Skolnik
Hal C. Smith
Ricki A. Vick
Joseph A. Wellings
Stephen Whitesell
Dean A. Winkler

Class Agents: Dennis Fritz - A-I
James Petter - M-Z

38 Contributors
Percentage Contributors - 21.34
Living Alumni - 179

'69

John R. Albertine
James Riley Allen
John R. Allen
John T. Anderson
Donald A. Bath
Morris K. Belknap
Joe R. Billman
Michael A. Blackburn
Allan H. Boner
Gary L. Grebe
Andrew C. Browe
Thomas G. Bucci
Wm. K. Burkhart, Jr.
Davis Chin
James G. Collins
Irvin D. Crossan
Eric W. Dany
Thomas M. Davey
Peter K. Doenges
Glenn W. Douglas
Michael E. Douglas
Jim D. Edwards
Robert A. Englehart
Roger C. Evans
Norman G. Fugate, Jr.
Dale F. Good
Charles W. Greene
Kennett S. Hamai
James P. Hancock
James A. Hartman
Alan L. Heath
Robert J. Hilles
Stephen M. Hillman
David Lee Hohlfeldt
George L. Holland
Dane A. Horna
James J. Houdeshell
James Hull
Jose Ibanez
John A. Jacobi
Darrell L. Jones
Roy E. Kaser
Henry W. Keahey
Steven A. Kennedy
Richard H. Kerr
Ernest Jay Kletz
Charles M. Kruse
John E. Leonard
Clifford W. Lewis

Frank I. Lindsey
Joseph D. Lombardi
Robert R. Lowe
Lawrence E. Lynn
John K. Malmquist
Walter R. Mazzei
Stephen L. McLellen
Edward A. Neu III
John S. Newlin
Michael T. Nugent
Robert A. Patterson
John C. Peters
Charles E. Petersen
Daniel J. Phelps
John A. Piper
John J. Quinan
Larry W. Rennels
Stephen A. Ricks
Monte D. Riggs
David A. Ripple
Douglas W. Roof
Rainer Ropers
Burton E. Rossiter
Russell V. Rouse

Donald R. Royer
Larry K. Rust
David K. Shewmaker
Robert W. Smith
Stephen R. Smith
Dinesh K. Srivastava
Rex O. Stockwell
Sidney N. Stone
Timothy K. Sullivan
David J. Szczepanek
Jerald M. Tarble
Tom Thuerbach
James J. Tomlinson
David K. Trueblood
James L. Tucker
Joseph A. Vumbaco
William J. Volz, Jr.
John A. Walter

Class Agents: John A. Jacobi - A-L
James L. Tucker - M-Z

91 Contributors
Percentage Contributors - 41.74
Living Alumni - 221



J. A. Coltrin '14 is greeted by Ruel F. "Fox" Burns '15 and A. T. Merrill '16 during last year's Homecoming Weekend. As one of the local papers proclaimed in a second front page story about the event: "School Ties Seldom Fade at Rose."

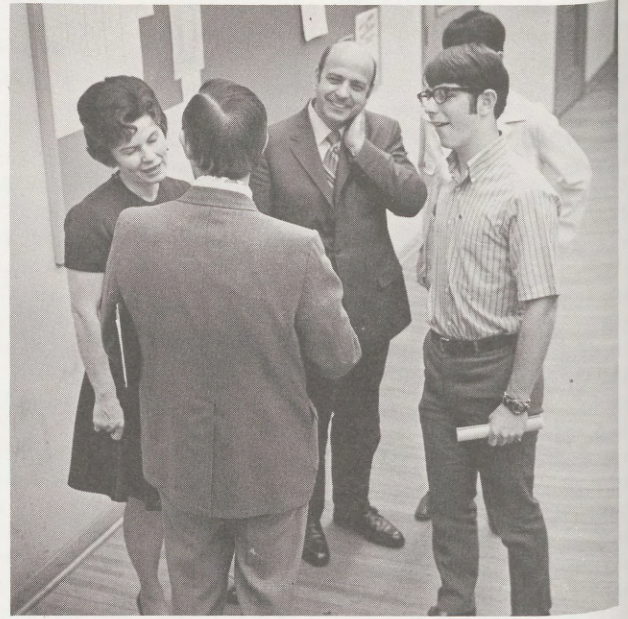
Parents' Fund

Two hundred thirty-four parents contributed a record \$5,628 to the 1969-70 Rose Parents' Fund. Since parents of Rose men have a major investment in the institute, such support reflects their belief in Rose and its educational philosophy.

Support of parents, as well as alumni, is a keystone in receiving major gifts and corporate support to higher education.

Mr. & Mrs. Joseph E. Adams
Mr. John Adomaitis
Mr. & Mrs. Ralph E. Anderson
Mr. & Mrs. John L. Aughey
Mr. & Mrs. Fred R. Batson
Mr. & Mrs. Renick G. Bell
Mr. & Mrs. Anthony J. Beltz
Mr. & Mrs. A.J. Bertram
Mrs. Rubydean Black
Mr. Marvin Bodine
Mr. & Mrs. Willard Boward
Mr. & Mrs. John Frederick Bowers
Mr. & Mrs. Ralf F. Box
Mr. Robert V. Branion
Mr. & Mrs. Nohl A. Braun
Dr. & Mrs. Kenneth Brown
Mr. & Mrs. Waldo E. Brown
Mr. & Mrs. Robert J. Bruner
Mr. & Mrs. Gus C. Bubenzer
Mr. & Mrs. Ralph L. Buechler
Mrs. Dorothy Bueg
Mr. & Mrs. Milton V. Caldwell
Mrs. Opal J. Carter
Mr. & Mrs. George R. Chase
Mr. & Mrs. Virgil Clark
Mr. & Mrs. Richard E. Connon
Mr. & Mrs. Charles E. Cook
Mr. & Mrs. Wilfred C. Crome
Mr. & Mrs. Joseph Cross
Cummen's Engine Co. Foundation
Mr. & Mrs. Dale M. Curry
Mr. & Mrs. James L. Dawe
Mr. & Mrs. David Decker
Mr. & Mrs. W.G. Dedert
Mr. & Mrs. Virgil R. Deem
Mr. & Mrs. George Delaplane
Mr. William S. Dial
Mr. Robert F. Dodge
Mr. & Mrs. Dane G. Dougan
Mrs. Irene E. Douglas
Mr. John Doup
Mr. & Mrs. L.L. Doyle
Mr. & Mrs. George I. Duncan
Mr. & Mrs. John H. Dupps
Mr. & Mrs. Clarence Duttlinger
Mr. & Mrs. James M. Duvall
Dr. & Mrs. Milton H. Elzufon
Mr. & Mrs. Richard H. Engelman
Mr. & Mrs. Marion Engle
Mr. & Mrs. W.G. Entekin
Mr. Reinhart C. Eppen
Mr. & Mrs. Edward C. Epstein
Mr. & Mrs. G.T. Ersted
Mr. & Mrs. Donald Faris, Sr.

Mr. & Mrs. George G. Fassnacht
Mr. & Mrs. J.M. Fiessinger
Mr. George E. Finley
Mrs. Marie K. Foulke
Mr. & Mrs. Martin V. Fowler
Mrs. Margaret M. Frushour
General Mills Foundation
Mr. & Mrs. Louis Gland
Mr. & Mrs. Charles S. Gleason
Mr. & Mrs. Robert W. Goble
Mr. & Mrs. E.H. Grebe
Mr. & Mrs. Douglas G. Gresham
Mr. Alexander F. Grous
Mr. & Mrs. Robert G. Grove
Mr. & Mrs. William F. Grube
Mr. & Mrs. Arthur J. Hahn
Mr. & Mrs. H.E. Gustin
Mr. & Mrs. R.L. Haddad
Mr. Lee Hagedorn
Mr. & Mrs. Thomas C. Hale
Mr. & Mrs. Robert E. Hancock
Dr. P.D. Hardyman
Mr. & Mrs. Jack R. Harrison
Mr. & Mrs. Arthur W. Hartman
Mr. & Mrs. David E. Hastings
Mr. James W. Hayes, Sr.
Mr. & Mrs. Marvin Hedrick
Mr. & Mrs. Meade S. Heeter
Mr. & Mrs. William R. Heinrich
Mr. George W. Heller
Mr. & Mrs. Howard A. Helt
Mr. Robert Hendrix
Mr. & Mrs. Edward M. Hess
Mr. & Mrs. Thomas R. Hightower
Mr. & Mrs. William Hildenbrand
Mr. & Mrs. Robert L. Hillis
Mr. & Mrs. E.P. Hofstadter
Mr. & Mrs. Carl P. Hollinger
Mr. & Mrs. Eugene E. Hoover
Mr. & Mrs. Graden G. Hoover
Mr. & Mrs. John R. Hougland
Mr. & Mrs. Donald R. Huett, Sr.
Mr. & Mrs. Walter H. Huhn
Mr. & Mrs. Gurdon P. Huntington, Sr.
Mr. & Mrs. W.F. Huntley
Mr. & Mrs. William Huyett
Mr. & Mrs. Lewis B. Jackson
Mr. & Mrs. Gerald Jank
Mr. & Mrs. Clarence D. Jones
Mr. & Mrs. Bernard R. Josif
Mr. & Mrs. Bernard R. Josif
Mr. & Mrs. Joseph L. Keith
Mr. & Mrs. Robert H. Kelm



Prof. Alfred R. Schmidt '49 (back to camera) appears to have made a hit with Rose parents following a Parents' Day concert by the Rose Glee Club. In addition to teaching math, Prof. Schmidt is accompanist for the 50-man choral group.

Mr. & Mrs. John Kerber
Mr. & Mrs. Coleman G. Keys
Mrs. Frances Kibler
Mr. & Mrs. Eugene E. Killion
Mr. & Mrs. Robert Kinsell
Mr. & Mrs. George H. Knoll
Mr. & Mrs. Joseph S. Kominiarek
Dr. Robert Kopecky
Mr. & Mrs. I. Raymond Krantz
Mr. & Mrs. Edward F. Krome, Sr.
Mr. Clyde Krug
Mr. & Mrs. Matthew Kuzmick
Mr. & Mrs. Stanley Lake
Mr. & Mrs. Bert Lammey
Mr. & Mrs. Wendell B. Lane
Mr. & Mrs. John Latvaitis
Mr. & Mrs. John A. Lawrence, Sr.
Mr. & Mrs. Edgar Lee
Mr. & Mrs. Ralph L. Leonard
Mr. & Mrs. Frank Liotine, Sr.
Mr. & Mrs. Bernard L. Logan
Mrs. Margaret Lowery
Mr. & Mrs. T.J. Lucey
Mr. & Mrs. Earl A. McBrayer
Mr. & Mrs. Emmett W. McCarthy
Mrs. Margaret McCutchen
Mr. Edwin MacAslan
Mrs. Dorothy Maddex
Mr. & Mrs. Harold Mahler
Mr. & Mrs. W. D. Manson
Mr. & Mrs. Paul Marinko
Mr. & Mrs. Robert W. Markl
Mr. & Mrs. Reese F. Martens

Mr. & Mrs. Otis E. Masteller
Mr. & Mrs. Donald E. Meek
Mr. & Mrs. A.T. Merrill
Mr. & Mrs. Henry A. Metz
Mr. & Mrs. Roscoe M. Mickey
Mr. & Mrs. Clarence K. Miller
Mr. & Mrs. John I. Miller
Mr. & Mrs. Stewart E. Miller
Mr. & Mrs. Frank V. Mlinar
Mobile Foundation, Inc.
Mr. & Mrs. Hollis Moore
Mr. J.D. Moore
Mr. & Mrs. Karl B. Morris
Mr. & Mrs. Charles W. Moss
Mr. & Mrs. LeRoy D. Mowery
Mr. & Mrs. Charles M. Murphy
Mr. Oscar Murray
Mr. & Mrs. Edward A. Neu, Jr.
Mr. & Mrs. J.A. Nickerson
Mr. & Mrs. Jacob T. Nilsson
Mr. & Mrs. Clifford E. Nock
Mr. & Mrs. David Oberholtzer
Mr. Charles Oberst
Mr. Karl T. Panitzke
Mr. Robert K. Parrish
Mrs. Gladys B. Pasco
Mr. & Mrs. James L. Patrick
Mr. & Mrs. Heinz G. Pelz
Mr. & Mrs. P. James Perille
Mr. & Mrs. Gerald E. Perry
Dr. & Mrs. Deward D. Peterson
Mr. Raymond A. Peterson
Mr. & Mrs. Beryle S. Pittman

Terre Haute Community Scholarship Fund

One of Rose's most important needs is scholarship assistance if the school is to continue to attract outstanding students to the campus and meet the competition of other independent colleges and large state universities throughout the nation.

The Terre Haute Community Campaign provided \$11,177 to the financial aid picture and a total of \$25,309 to all phases of the giving program at Rose.

Civil leader Morris Blumberg served as chairman of the local campaign currently in its third year of existence.

Harry J. Adams
Adams Pontiac, Inc.
Arab Pest Control
B-A Inc.
Mr. & Mrs. John G. Biel
Walter A. Bledsoe, Jr.
Mr. & Mrs. John L. Bloxsome
Benjamin Blumberg
Morris B. Blumberg
Bowen Oldsmobile Inc.
Bunch Nurseries
Carney Tire Company
Central Federal Savings and Loan Assn.
Christman Company
Howard H. Clare
Harvey Clark
M.D. Cohen & Son, Inc.
Herman Cole, Jr.
Construction Consultants, Inc.
Benjamin G. Cox
Beecher Cromwell
Culligan Water Conditioning
John A. Curry & Associates
Dennis Trucking Co., Inc.

Friends

Thomas W. Binford
C.H. Blanchar
Charles A. Breskin
Kenneth R. Carr
Wayne M. Cory
R.E. Crandall
Dr. & Mrs. Crawford R. Failey
Harold B. Gotaas
Dr. Frank A. Guthrie
Miss Gertrude H. Hildreth
Mrs. Robert A. Laatz
Mrs. T. Wayne Kehoe
Jerome L. Martin
Dr. Wilkison Meeks
Dr. John R. Mitchell
Mrs. Mary B. Remster
Dr. & Mrs. Byron Rutledge
C. Oscar Schmidt
Mrs. Harry A. Schwartz
Mr. & Mrs. Donald G. Slack
Mrs. Ellen F. Whitecotton
Col. Robert T. Willets
Miss Margaret E. Wisely

John W. Dinkel, Sr.
Distributors Terminal Corporation
Empire Electric & Machine Co.
Enterprise Metal Products
Essanbee Realty Co., Inc.
R.A. & M.R. Feiler
Freitag-Weinhardt, Inc.
Gharst Supply Co.
Great-Scot Super Market
Ted Grob, Sr.
Guarantee Roofing Company
Ray H. Hahn
Haley Bros. Construction Corp.
Hartmann Co., Inc.
Hillman Jewelers
Dr. Sam C. Hite
Industrial Supply Company
Dr. Clyde W. Jett
Leonard P. Kincade
Kline Electric
Guy J. Kornblum
Dr. James M. Kortright
Lambda Chi Alpha Fraternity
Sidney Levin
Levinson's
Lovelace Truck Service, Inc.
Mace Service, Inc.
Dr. L.A. Malone
Mrs. Josephine L. Meister
Moore-Longen Printing & Publishing Co.
Dr. Noel E. Moore
George O. Nichols
Nichols Investment Corp.
E. C. Niemeyer
Pepsi - Cola Bottling Company of Terre Haute
Louis H. Petzold
J.B. Pfister Co., Inc.
Potter Electrical Engineering & Construction Co., Inc.
Powell-Stephenson Lumber Co., Inc.
Reiman Building Materials, Inc.
Riverside Auto Wrecking
Rosenfeld & Wolfe
James S. Royse
John T. Royse
Sears, Roebuck and Co.
Shanks Motor Company
Forrest Sherer Agency, Inc.
Sussman Iron & Metal

Terre Haute Carpet Cleaning & Rug Co., Inc.
Terre Haute Engraving Co.
Terre Haute Tent & Awning Co.
Thomas Mobil Homes
John L. Thompson
Miss Gladys M. Tilley
Tri-Industries, Inc.
David E. Turner
Raymond K. Turner
Robert I. Turner
WAAC Radio
W-TWO T.V.
Walker Electric Supply, Inc.
Weberg's Furniture
Welfare Finance Co.
M.C. Wheeler
Miss Margaret E. Wisely

Special Gifts

American Dental Association
The American Legion
American Society for Mechanical Engineers
American Society for Metals
Cedar Lake Junior Women's Club
Cleveland Society of Professional Engineers
Forrest Sherman High School
Hartford City Rotary Club
Highway Drivers, Dockmen, Spotters, Rampmen, Meat Packing House and Allied Products Drivers and Helpers, Office Workers and Miscellaneous Employees Local No. 710
Hobart High School
Indiana Society of Professional Engineers
International Brotherhood of Electrical Workers, Local No. 363
Junior Achievement of Eastern Indiana
Kappa Kappa Kappa, Inc.
Kiwanis Club of Greater Terre Haute
National Association of Secondary School Principals
North Plainfield High School P.T.A.
Oak Hills High School
Rotary Club of Terre Haute
St. Bernard High School Fund
Society of Professional Engineers

Mrs. Barbara Pope Potts
Mr. Donald E. Privett
Mr. & Mrs. Robert C. Randall
Mr. & Mrs. Maurice Reising
Mrs. Dorothy Rhynard
Mr. & Mrs. Walter S. Rich
Mr. Logan M. Richeson
Mr. & Mrs. Siegfried Riechert
Mr. & Mrs. William B. Rollings
Mr. & Mrs. Harry W. Ryan
Mr. & Mrs. Dewey O. Sandmeyer
Mr. Cliff Sands
Mr. & Mrs. Robert H. Schacht
Mr. & Mrs. J.R. Scharringhausen
Mr. & Mrs. Karl H. Scheidt, Jr.
Mr. & Mrs. Louis Schmidli
Mr. & Mrs. Donald B. Schreiber
Mr. & Mrs. E.J. Schreiber
Mr. & Mrs. William A. Schumann
Mr. & Mrs. Conrad Shutske
Mr. & Mrs. Gervase Schwenk
Mr. & Mrs. George Sharp
Mr. & Mrs. Leo K. Simpson
Mr. & Mrs. James C. Smith
Mr. & Mrs. Nathan D. Smith
Mr. & Mrs. Lawrence Smock
Mr. & Mrs. Wilbur E. Spear
Mr. & Mrs. A.L. Stoecklin
Mr. William H. Stone
Mr. Alfred Donald Story
Mr. & Mrs. Harvey A. Story
Mrs. Wanda G. Strahle
Mr. & Mrs. Melvin E. Strietelmeier
Mr. & Mrs. Clayton P. Sturgeon
Mr. Frank J. Sturniolo
Mr. Donald P. Sweetser
Mr. & Mrs. George W. Tapscott
Mr. & Mrs. Harry Taylor
Mr. John O. Teegarden
Mr. & Mrs. Hugh F. Temple
Mr. & Mrs. W.P. Thaler
Mr. & Mrs. Loren Theriac
Mr. & Mrs. Gerald C. Thomas
Mr. Frank H. Thorne
Mr. & Mrs. Oliver F. Trueblood
Mr. & Mrs. Robert E. Ulmansiek
Uniroyal Foundation
United Aircraft
Mr. & Mrs. James Van Laningham
Mr. & Mrs. Rocco J. Vumbaco
Mr. & Mrs. Charles A. Walker
Mr. & Mrs. Jules A. Wauthier
Mrs. Arthur T. Wellman
Mr. & Mrs. Marvin Wheeler
Mr. Garland White
Mr. & Mrs. Charles Wickersham
Mr. & Mrs. Harry Wille
Mr. R.C. Willer
Dr. John D. Wilson
Mr. & Mrs. Ralph H. Winslow
Mr. & Mrs. I.M. Woodard
Mr. & Mrs. Ken L. Wooddell
Mr. & Mrs. Harold Wordinger
Mr. & Mrs. Ralph K. Wyssling
Mr. & Mrs. Martin Yelnick
Mr. & Mrs. Joseph Zumar

Corporations Foundations

Maud Ainslie Scholarship Fund
Alcoa Foundation
Glen Alden Corporation
American Electric Power System Fund
American Machine & Foundry
Amsted Industries Foundation
John W. Anderson Foundation
Aileen S. Andrew Foundation
Armco Foundation
General Henry H. Arnold Educational Fund
Ayrshire Collieries Corporation
Bailey Meter Co.
Bater Company
Bethlehem Steel Corporation
Borg-Warner Foundation, Inc.
Caterpillar Tractor Co.
Central Newspapers Foundation
Cities Service Foundation
The Cleveland Press
Collins Radio Company
Commercial Solvents Corp.
Comtel Corporation
CTS Corporation
CTS Microelectronics, Inc.
Cummins Engine Co., Inc.
Cummins Engine Foundation
Detroit Edison Company
Dow Chemical Company
Carl Duisberg Gesellschaft
E.I. duPont de Nemours & Co.
Elks National Foundation
Enterprise Savings Association
Ethyl Corporation
Ford Motor Company Fund
G.B.U. Scholarship Foundation, Inc.
General Motors Corporation
Glas-Col Apparatus Company
Martha Goodman Foundation
Harrison Division, Hewlett Packard
Hercules, Inc.
Hoosier Water Co., Inc.
The John Huntington Fund for Education
Huntington, Wade & Associates
Indiana Elks Association
Indiana Heart Association, Inc.
Indiana Highway Constructors, Inc.,
Inland Steel-Ryerson Foundation
International Minerals & Chemical Corp.
James S. Kemper Foundation
Johns Manville Fund, Inc.
IASPAU, Inc.
Lilly Endowment, Inc.
Link Belt, Div. of FMC Corp.
Lone Star Cement Corp.
Dorothy B. Lotz Scholarship Fund
Louisville Bridge & Iron Co.
James McGregor Student Endowment Fund
Marathon Oil Foundation, Inc.

Metals and Controls, Inc.
Mobil Foundation, Inc.
Monsanto Company
Mueller Co.
Nalco Foundation
National Society of Professional Engineers
Norman Simon, Inc. Foundation for Education
Frank Leonard Oakes Trust
Oglebay Norton Foundation
Olin Corporation Charitable Trust
The Piper Foundation, Inc.
PPG Industries Foundation
Procter & Gamble Mfg. Co.
Public Service Indiana

Alcoa Foundation
American Can Company Foundation
American Commercial Lines
American Metal Climax Foundation
American Standard Inc.
Armco Steel Corporation
Armstrong Cork Co.
Atlantic Richfield Foundation
Chicago Pneumatic Tool Co.
Chrysler Corporation Fund
Commercial Solvents Corp.
Consumers Power Company
Container Corporation of America
Cummins Engine Co.
Diamond Alkali Foundation
Dow Chemical Company
Dresser Foundation
Equitable of Iowa
Esso Education Foundation
Factory Mutual Insurance Companies
Firestone Tire & Rubber Co.
Ford Motor Company Fund
General Electric Foundation
General Foods Fund
General Mills Foundation

Radio Corporation of America
The Rockport Fund, Inc.
Royal Neighbors of America
Scholarship Foundation of Beverly Hills University Club
Sears, Roebuck and Co.
Shell Companies Foundation
Southwestern Engineering Foundation
Square D Foundation
Standard Oil (Indiana) Foundation
State Farm Companies Foundation
Oliver W. Storer Scholarship Fund
Sun Oil Company
Tee-Pak Foundation
Texaco, Inc.

General Telephone & Electronics Laboratories, Inc.
Getty Oil Company
B.F. Goodrich Fund
Gulf Oil Corporation
Hartford Insurance Group
Hercules Incorporated
Honeywell, Inc.
Hughes Aircraft Company
International Business Machines Corporation
Jones & Laughlin Steel Corporation
Kimberly Clark Foundation, Inc.
Lark Commercial Painting & Sandblasting, Inc.
McGraw-Hill, Inc.
Mallinckrodt Chemical Works
Marathon Oil Company
Mead Johnson & Co. Foundation
MFB Mutual Insurance Company
Midland-Ross Corporation
Mobil Foundation, Inc.
Motorola Foundation
National Distillers & Chemical Foundation

Texas Instruments Foundation
Thomas & Skinner, Inc.
Union Carbide Corporation
Uniroyal Foundation
United Steelworkers of America, District 19
United Steelworkers of America, District 30
Vanderburgh County Orphan Educational Fund
West Foundation
Western Electric Fund
Westinghouse Educational Foundation
Westinghouse Electric Corporation
Hal E. Wilkins Trust

Norton Company, Burr Manning Division
Olin Mathieson Charitable Trust
Owens-Corning Fiberglas Corp.
Phillips Petroleum
PPG Industries Foundation
SCM Corporation
Scott Paper Co. Foundation
Joseph E. Seagram & Sons
Sinclair-Koppers Company
Singer Company Foundation
SOHIO Matching Gift Plan
Squibb Beech-Nut, Inc.
Standard Oil (Indiana) Foundation
Sylvania Electric Products, Inc.
Texaco, Inc.
Union Electric Company
United Aircraft
Uniroyal Foundation
Westinghouse Education Foundation
Wallace-Murray Foundation
Whirlpool Corporation
Wyandotte Chemicals Corp.

Matching Gift Companies



Assoc
of I
Rose
\$70,254
is a fu
dent co
Throu
demon
system.

A & H Tru
A. T. & T
Accurate F
The Adam
Aero May
The Alcoa
Allied Mill
Allis-Chalm
The Allstat
Alton Box
American
tion
American
American
American
Trust C
The Ameri
American
American
The Ameri
Bend
American
The Ameri
American
Amsted Inc
Anaconda
Anchor Inc
John W. A
Anthony W
Architectu
Robert
Armstrong
Armstrong
Art Iron F
The Arvin
Associated
Associates
Associates
Associates
Associates
Associates
tion
Associates
Wm. A. Atk
Atlas Foun
Anburn Fo
Ayrres Foun
The Badall
Hugh J. Ba
Baker Spec
Ball Brass
Ball Brothe

Associated Colleges of Indiana Program

Rose received unrestricted annual gifts amounting to \$70,254 through Associated Colleges of Indiana. A.C.L. is a fund-raising organization comprised of 15 independent colleges in the state.

Through this program business and industry in Indiana demonstrate their concern for the independent college system.

A & H Truck Line, Inc.
A. T. & T. Co., Long Lines Division
Accurate Parts, Inc.
The Adams & Westlake Co.
Aero Mayflower Transit Co.
The Alcoa Foundation
Allied Mills, Inc.
Allis-Chalmers Foundation
The Allstate Foundation
Alton Box Board Charitable Trust
American Aggregates Corp. Foundation
American Brattice Cloth Corp.
American Commercial Barge Line Co.
American Fletcher National Bank & Trust Co.
The American Furniture Co.
American Hospital Supply Corp.
American National Bank
The American National Bank, South Bend
American National Bank, Muncie
The American States Insurance Cos.
American United Life Insurance
Amsted Industries Foundation
Anaconda Aluminum Co.
Anchor Industries, Inc.
John W. Anderson Foundation
Anthony Wayne Bank
Architectural Products Div., H.H. Robertson Co.
Armstrong Cork Co.
Armstrong Products Co.
Art Iron Foundation
The Arvin Foundation
Associated Truck Lines, Inc.
Associates Corporate Service Co.
Associates Discount Corp.
Associates Finance Corp.
Associates Industrial Loan Corp.
Associates Investment Co. Foundation
Associates Industrial Finance Corp.
Wm. A. Atkins Charitable Trust
Atlas Foundry Co.
Auburn Foundry Foundation Fund
Ayres Foundation, Inc.
The Badall Company
Hugh J. Baker and Company
Baker Specialty & Supply Co.
Ball Brass & Aluminum Foundry
Ball Brothers Foundation

Banks of Connersville
Mr. & Mrs. Hugh A. Barker
R.C. Barler
The Norman Bassett Foundation
Batesville State Bank
Beatty Machine & Mfg. Co.
Beckett Bronze
Belden Corporation
Bemis Co. Foundation
L. Berman & Company
E.H. Bindley & Co.
Blaw-Knox Foundation
The Wm. H. Block Co.
Bohn Aluminum & Brass Co.
The Bookwalter Co.
Boone County R.E.M.C.
Borg Warner Foundation
Bremen State Bank
Brockway Glass Co. Foundation
M. Brown & Sons, Inc.
Robert N. Brown
Brown Shoe Co.
Bryan Steam Corporation
Bryant-Hedback Co.
Burger Chef Systems, Inc.
Burnet-Binford Lumber Co.
The Calumet National Bank
The H.O. Canfield Co.
Capital Charities, Inc.
The Carrier Foundation
J.I. Case Company
Casting Service Corp. of Indiana
C.B.S. Foundation, Inc.
Central Broadcasting Corp.
Central Pharmaceutical Co.
Central Soya Foundation
Chesterton State Bank
Chicago Telephone Supply Fdn.
Chrysler Corporation Fund
Cities Service Foundation
Citizens Federal Savings & Loan Assn.
The Citizens National Bank of Bedford
The Citizens National Bank (Tipton)
The Citizens State Bank, Hartford City
City Pattern & Foundry Co.
City Security Corp.
The Clark County State Bank
Clark Equipment Co., Brown Trailer Div.

Clow Corporation
College Life Insurance Co. of America
Colonial Mortgage Co. of Indiana
Commonwealth Life Insurance Co.
Como Plastics, Inc.
Concrete Materials Div., Martin Marietta
Container Corp. of America
Continental Can Company
Continental Insurance Companies
Continental Steel Corporation
Cornelius Printing Co.
CPC International, Inc.
Credithrift Financial-- Richard E. Meir Fdn.
Cummins Engine Foundation
Mr. & Mrs. C.F. Cunningham
D-A Lubricant Co.
Dana Corporation Foundation
Danners, Inc.
J.W. Davis Company
The Decatur Casting Co. Fdn.
John Deere Foundation
Deister Concentrator Co.
Del Monte Fremont Foundation
Delaware Machinery & Tool Co.
DeLuxe Check Printers Foundation
Dodge Foundation
The Reuben H. Donnelley Corp.
R.R. Donnelley & Sons, Inc.
Duncan Electric Foundation
Mr. & Mrs. John R. Dunigan
Dunlap and Company
Dura-Containers, Inc.
Dwyer Instruments, Inc.
Dwyer Products Corporation
F. W. Dyer Mfg. Co.
Eckrich Foundation
Emmco Insurance Co.
Enos Coal Corporation, Old Ben Coal Corp.
Enos Coal Sales Div., Pickands Mather & Co.
The EPH Foundation
Erie-Haven, Inc.
Ertel Manufacturing Co.
Excel Foundation
Excel Manufacturing Corp.
Extruded Alloys Corporation
Fairfield Manufacturing Co., Inc.
Farm Bureau Insurance Companies
Farmers & Merchants Bank (Bluffton)
The Farmers National Bank (Shelbyville)
Fauber Construction Company
Federal - Mogul Corp. Charitable Trust Fund
Federated Publications, Inc.
Morris E. Feiwell
The Firestone Trust Fund
The First Bank of Berne
The First Bank of Whiting
First Bank & Trust Co.
First Bank & Trust Co., Batesville

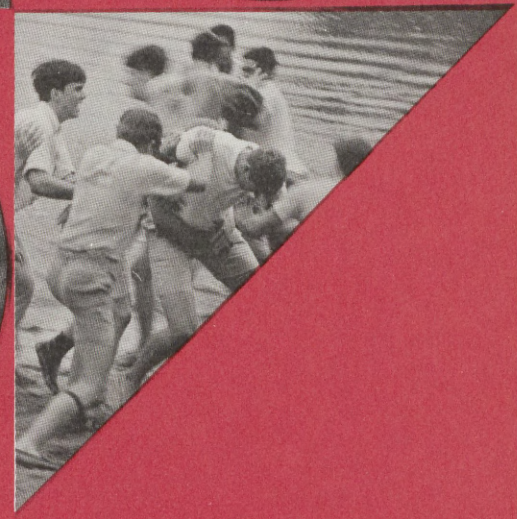
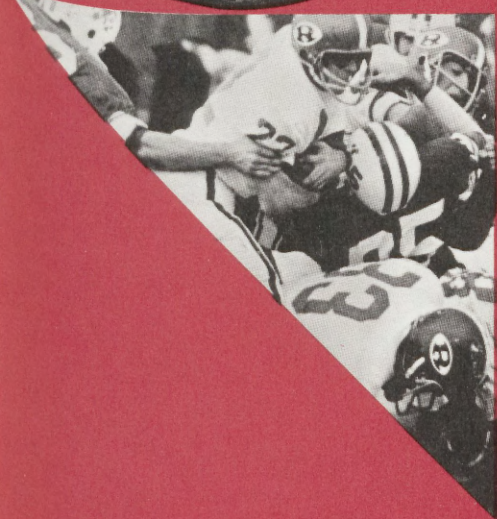
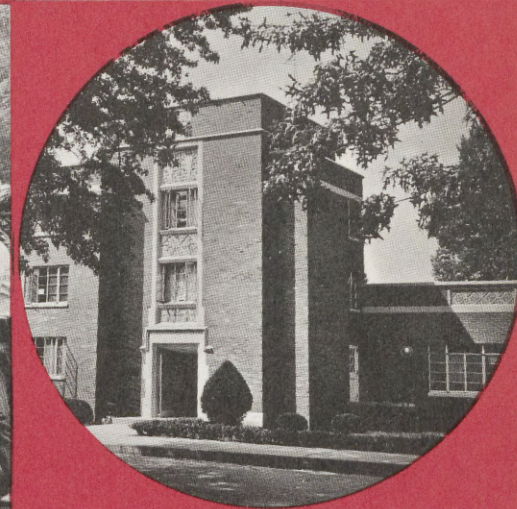
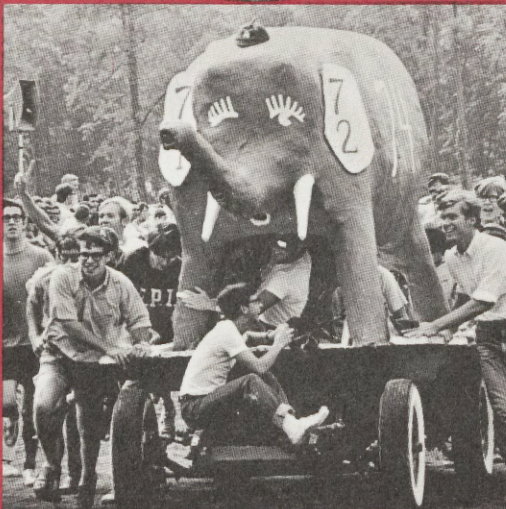
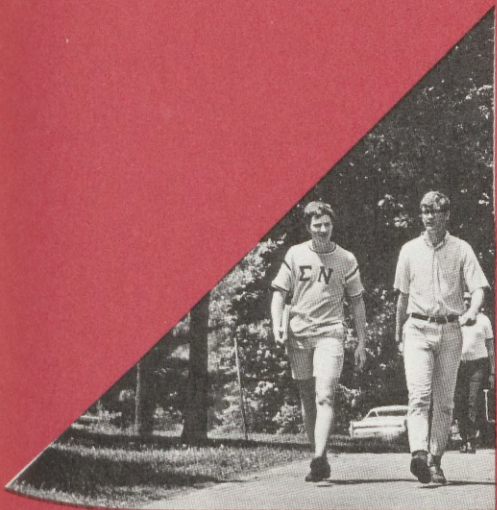
First Bank & Trust Co., Speedway
First Bank & Trust Co. Foundation
First Federal Savings & Loan Assn.
First Federal Savings & Loan Assn., Lafayette
The First-Merchants National Bank
First National Bank, Aurora
The First National Bank of Bloomington
The First National Bank of Elkhart County
The First National Bank, Huntington
First National Bank, Kokomo
First National Bank, New Castle
First National Bank, Portland
The First National Bank in Wabash
The First State Bank of Decatur
First Union Bank & Trust Co.
The Floyd County Bank
Foellinger Foundation
The Ford Meter Box Co.
Ford Motor Co. Fund
Fort Wayne National Bank Fdn.
Fort Wayne Structural Steel Co.
Foster-Forbes Glass Co.
The Fountain Trust Co.
Franklin Electric Company
Franklin Finance Company
Lloyd A. Fry Roofing Co.
Gariup Construction Co.
Gary National Bank
General American Transportation Corp.
General Motors Corporation
General Telephone & Electronics Foundation
The General Tire Foundation
The B.F. Goodrich Fund
The Goodyear Tire & Rubber Fund
Goshen Rubber Co.
Gashen Sash & Door Co.
The H. W. Gossard Co.
The Great Atlantic & Pacific Tea Co.
The William C. Griffith Foundation
Gulf & Western Foundation, Bohn Aluminum & Brass
Hagerman Construction Corp.
The Hamilton Foundation
Hammond Lead Products, Inc.
Harbison-Walker Refractories Co.
Harsco Corporation
Haynes Milling Co.
Henry County Building & Loan Assn.
George M. Hillenbrand II
Hillenbrand Industries
Hoerner Waldorf Charitable Fund
Hoffman Specialty Mfg. Corp.
Holcomb & Hoke Mfg. Co.
Hoosier Panel Co., Inc.
Hoosier Solvents & Chemical Corp.
Hoosier State Bank of Indiana
Hoosier Veneer Co.
Hoover Foundation, Stubnitz Spring Div.

The Huffman Foundation
 Huffman Mfg. of Indiana
 Joseph J. Huntman
 Huntington Laboratories, Inc.
 Hurst Manufacturing Corp.
 Independent College Funds of Indiana
 Joseph J. Huntman
 Indiana Bell Telephone Company
 Indiana Chemical Trust
 Indiana Farm Bureau Cooperative Assn.
 The Indiana Farmers Mutual Ins. Co.
 Indiana Insurance Co.
 Indiana & Michigan Electric Co.
 The Indiana National Bank of Indianapolis
 Indiana Pressed Steel Co.
 Indiana State Bank of Terre Haute
 Indiana Steel & Wire Co.
 Indianapolis Life Insurance Co.
 Indianapolis Morris Plan Corp.
 Indianapolis Power & Light Co.
 Indianapolis Water Co.
 Industrial Trust & Savings Bank
 Interlake Steel Corporation
 IBM Corporation
 International Harvester Foundation
 International Telephone & Telegraph Corp.
 Irwin-Sweeney-Miller Foundation
 Irwin Union Foundation
 Jackson County Bank
 Jasper Desk Co.
 The Jasper Foundation
 Jasper Seating Co.
 Jefferson Corporation
 Jefferson National Life Insurance Co.
 Johnston Container Corp.
 Jones & Laughlin Steel Corporation
 Arthur Jordan Foundation
 KCL Corporation
 Kemper Brothers, Inc.
 C.B. Kendall
 Kent Plastics Corporation
 Kentland Bank
 The Kieffer Paper Mills
 Kingsley Furniture Co., Inc.
 Kokomo Gas & Fuel Co.
 Kokomo Spring Co.
 Koontz-Wagner Electric Co.
 Kraftco Corporation
 S. S. Kresge Company
 Lafayette Life Insurance Co.
 Lafayette National Bank
 F.H. Langsenkamp Co.
 La Salle Steel Co.
 Lau Blower Foundation
 Lawyers Title Insurance Corp.
 Lever Brothers Company
 Lilly Industrial Coatings, Inc.
 Lincoln National Bank & Trust Co.
 The Lincoln National
 The Lincoln National Life Foundation
 Little Crow Milling Co.

Local Finance Corporation
 Loeb's, Inc.
 Louisville Cement Co.
 McCord Corporation
 Mr. & Mrs. E. Kirk McKinney
 John J. Madden Mfg. Co.
 The Magnavox Foundation
 Robert D. Maish
 W. Bruce Maish
 Marathon Oil Foundation
 Marion-Day Company, Inc.
 Dr. & Mrs. John Z. Martin
 Matthews Brothers Co.
 F.W. Means & Co., Hammond Clean Towel Service
 Mercantile National Bank of Hammond
 The Merchants National Bank, Muncie
 The Merchants National Bank, Terre Haute
 Merchants National Bank & Trust Co., Indianapolis
 The Merck Co. Foundation
 Meridian Mutual Insurance Co.
 W.F. Meyers Co., Inc.
 Mid-States Rubber Products, Inc.
 Mid-States Steel & Wire Co.
 The Miles-Ames Foundation
 Milk Foundation of Indianapolis
 Minnesota Mining & Mfg. Co.
 Montgomery Ward Foundation
 Mossberg & Company, Inc.
 Muncie Federal Savings & Loan Assn.
 Mutual Home Federal Savings & Loan Assn.
 Mutual Trust & Deposit Co.
 The National Bank of Logansport
 National Biscuit Company
 National China & Equipment Co.
 National Metal Products Co.
 National Veneer & Lumber Co.
 New Century Homes, Inc.
 New York Life Insurance Co.
 Nixon Newspapers Benevolent Assn.
 North American Van Lines, Inc.
 Northern Indiana Public Service Co.
 Nicholas H. Noyes, Jr. Memorial Foundation
 The NSC Foundation
 The O'Brien Corporation
 Old Fort Foundation
 Old National Bank in Evansville
 Olin Mathieson Chemical Corporation
 Geo. S. Olive & Company
 Oliver Estate, Inc.
 Ontario Corporation
 Victor Oolitic Stone Co.
 George W. Orr, Jr.
 Owens-Illinois, Inc. Foundation
 Packaging Corp. of America
 Peabody Coal Company
 Peerless Pump, F M C Corp.
 The Penn Foundation
 J.C. Penney Company

The Peoples Bank, Portland
 Peoples-Home Life Insurance Co.
 Perfection Biscuit Co.
 Geo. Pfau's Sons Co.
 Chas. Pfizer & Company
 Philadelphia Quartz Co.
 Phillips Drill Company
 The Pillsbury Company
 Pioneer Corn Company
 Pioneer National Title Insurance Co.
 Plymouth Tube, Div. of Van Pelt Corp.
 Portland Forge (D.A. Hall Memorial Fdn.)
 PPG Industries Foundation
 The Procter & Gamble Fund
 Public Finance Corp.
 Public Service Indiana
 Pullman-Standard
 Purdue National Bank
 Radio Corporation of America
 Railroadmen's Federal Savings & Loan Assn.
 The Rauh-Martenet Foundation
 Recreation Equipment Corp.
 Reilly Foundation
 Reliance Electric Co. Charitable Trust
 Republic Steel Corporation Trust
 Richmond Baking Co. (Quigg Fund)
 Rieke Corp. Foundation
 Roach-Appleton Mfg. Div., All-Steel Equipment Co.
 Robertson Bros. Dept. Store
 Rochester Telephone Co.
 Rock Island Refining Corp.
 Roots Blower & Vacuum Pump Div.
 Rostone Corporation
 The S & H Foundation
 Salem Bank & Trust Co.
 Phil J. Schwanz Foundation
 Schwitzer Div. Wallace-Murray Foundation
 Sea Nymph Mfg. Corp.
 Seaboard Finance Co.
 Jos. E. Seagram & Sons, Inc.
 Sealed Power Corporation
 Silmer Div., Magnavox Co.
 The Sentinel Corporation
 Seymour Daily Tribune Co.
 The Seymour National Bank
 Shane Charitable Trust
 The Shelby National Bank
 Shelbyville Newspapers, Inc.
 Sibley Machine & Foundry Corp.
 The Singer Co. Foundation
 Smith Alsop Paint & Varnish Co.
 South Bend Tribune
 Southern Indiana Gas & Electric Co.
 St. Joe Paper Co.
 St. Joseph Valley Bank
 Standard Oil (Indiana) Foundation
 Standard Steel Specialty Co.
 The State Life Insurance Co.
 Statesman Insurance Group
 Stauffer Chemical Co. Foundation
 Stedman Foundry & Machine Co.
 Sterling Brewers, Inc.

Stewart Warner Corp.
 Stokely-Van Camp, Inc.
 Stone Container Corp.
 L. Strauss & Co.
 Syracuse Rubber Products, Inc.
 S.G. Taylor Chain Co.
 Templeton Coal Company, Inc.
 Terre Haute Concrete Supply Company
 Terre Haute First National Bank
 Terre Haute Mutual Savings Assn.
 Terre Haute Savings Bank
 Thomson Symon Company
 The H.A. Thrush Foundation
 Tokheim Corporation
 Town & Country Mutual Insurance Co.
 Mr. & Mrs. Fred C. Tucker
 Union Bank & Trust Co.
 Union Carbide Corporation
 Union Federal Savings & Loan Assn.
 Union Furniture Co.
 Union Savings & Loan Assn., Connersville
 Union Tank Car Company
 Uniroyal Foundation
 U.S. Steel Foundation
 United Telephone Co. of Indiana
 Verneo Corporation
 Vitreous Steel Products Co.
 Von Duprin, Inc.
 Richard C. Vonnegut, Sr.
 Vulcan Materials Co.
 Walker Electric Co., Inc.
 Hiram Walker & Sons, Inc.
 B. Walter & Company
 Warner Machine Products, Inc.
 Wayne Candies, Inc.
 Wayne Home Equipment Co.
 Wayne Pipe & Supply, Inc.
 Weatherhead Company
 Weil-McLain Company
 The West Foundation, Inc.
 Western Electric Foundation
 Western Rubber Co.
 Western Tar Products Corp.
 The Weston Wabash Foundation
 Weyerhaeuser Co. Foundation
 Wheelabrator Foundation
 Whirlpool Foundation
 White County R.E.M.C.
 Ralph J. Whiting
 Elmer L. Winkler
 Winslow Government Standard Scale Works, Inc.
 Wolf Supply & Equipment Corp.
 WROZ Radio Station
 Youngstown Sheet & Tube Co.
 Youngstown Steel Door Co.
 Jack Foundation
 Ben Zeigler Company, Inc.
 Zimmer, Inc.
 Zollner Corporation



ROSE TECH CLUBS

NEW YORK

Jack L. Foltz, '57, President
L.F. Kelley, '49, Vice President
James F. Haring, '49, Secretary
Gary W. Phipps, '60, Treasurer

SYRACUSE

Don Nelson, '53, President
Fred Ryker, '59, Secretary

PHILADELPHIA

Ronald Myrick, '56, President
Dennis Fritz, '68, Vice President
Ed Jirousek, '66, Sec.-Treas.

PITTSBURGH

Bernst Olson, '59, President
Robert I. Sears, '37, Secretary

WASHINGTON & BALTIMORE

John A. Jacobi, '59, President
Myer Berman, '58, Vice President
John White, '61, Sec.-Treas.

LOUISVILLE

Fred Wright, '62, President
Lynn Roberts, '63, Vice President
Robert E. Miller, '66, Sec.-Treas.

NORTHEASTERN OHIO

Gene L. Mrava, '57, President
John W. Gregory, '55, Vice President
Ronald L. Danilowicz, '63, Sec.-Treas.

SOUTHWEST OHIO

David Mullen, Jan. '49, President
Carl Wokasien, '51, 1st Vice Pres.
Frank Potts, '56, 2nd Vice Pres.
Eu Izumi, '68, Sec.-Treas.

DETROIT

Robert Cassidy, '49, President
Carl Hildebrand, '49, 1st V.P.
Michael Thomas, '64, 2nd V.P.
Tom Bosworth, '63, Sec.-Treas.

CHICAGO

Norman J. Pera, '48, President,
Roy Moody, '52, Vice President
Frank Mardjetko, '50, Sec.-Treas.

CENTRAL ILLINOIS

Jerome R. Hahn, '62, President
Gilbert L. Robinson, '63, Sec.-Treas.

IOWA

Dave Jaks, '68, President
Ben J. Bradburn, '68, Vice President
Ray V. Frischkorn, '65, Sec.-Treas.

EVANSVILLE

Richard A. Mullins, '40, President
Richard J. Kremer, '58, Sec.-Treas.

INDIANAPOLIS

Owen H. Meharg, '54, President
David A. Trueb, '61, Vice President
Larry Myers, '61, Sec.-Treas.

KOKOMO

Robert P. McKee, '40, President
James H. Sherman, '55, Vice Pres.

WABASH VALLEY

Richard Brown, '59, President
Roy Mueller, '66, Vice President
Dale Oexmann, '62, Sec.-Treas.

ST. LOUIS

Aaron Hogg, N'49, President
T. R. McPherron, '58, Sec.-Treas.

DENVER

Charles S. Meurer, '42

NORTH TEXAS

W.T. Weinhardt, F'43, President
E. Moller, Jr., Oct., 43, Sec.-Treas.

NORTHERN CALIFORNIA

Ed Kott, '48, President
Dr. James Guymon, '33, Vice. Pres.
Bruce Powell, '43, Sec.-Treas.

SOUTHERN CALIFORNIA

J.D. Edds, '58, President
Wilbur Steele, '58, Vice Pres.
Dave Hackett, '55, Sec.-Treas.

ARIZONA

Albert V. McEwen, '35, Sec.-Treas.

HONOLULU

Shinji Soneda, Jan. '49, Chairman



There is a certain mystique about the way first year Rose men rally around Rosie, the fabled Engineer mascot. Here the Centennial Class of 1974 frolics with the painted paper mache pachyderm following the Engineers' first touchdown of the football season.

ROSE ECHOES

Rose Polytechnic Institute
5500 Wabash Avenue
Terre Haute, Indiana 47803

Second Class
Postage

PAID

at
Terre Haute, Ind.

