

Fall 1974

Volume XIII - Issue 2 - Fall, 1974

Echoes Staff

Follow this and additional works at: https://scholar.rose-hulman.edu/rose_echoes

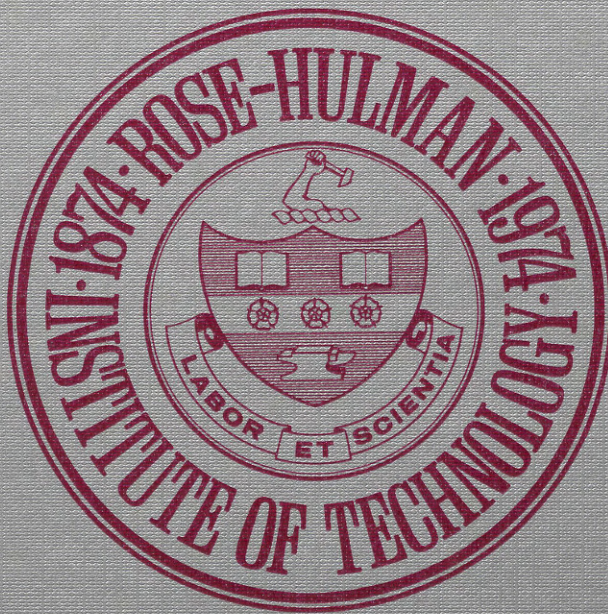
Recommended Citation

Staff, Echoes, "Volume XIII - Issue 2 - Fall, 1974" (1974). *Rose Echoes*. 24.
https://scholar.rose-hulman.edu/rose_echoes/24

This Book is brought to you for free and open access by the Other Institute Publications at Rose-Hulman Scholar. It has been accepted for inclusion in Rose Echoes by an authorized administrator of Rose-Hulman Scholar. For more information, please contact weir1@rose-hulman.edu.

ECHOES

Rose-Hulman Institute of Technology



100 Years of Excellence

Annual Report & Honor Roll — 1974

ECHOES

A black and white photograph of a pond with a fountain, surrounded by trees and a building in the background. The fountain is in the center of the pond, creating a misty spray. The building is a two-story structure with a gabled roof, partially obscured by trees. The foreground is a grassy bank, and the background is a dense forest of trees.

FALL, 1974 VOL. XIII, NO. 2
W. KENT HARRIS EDITOR

Published quarterly by Rose-Hulman Institute of Technology at Terre Haute, Indiana 47803. Second class postage paid at Terre Haute, Ind. Acceptance for mailing at special rate of postage provided for in section 1103, Act of October 3, 1917, authorized December 13, 1918.

Foreword

1974 is, of course, Rose-Hulman's Centennial Year. More than this, however, 1974 is truly a millenium in the Rose-Hulman history because it marks the attainment of a stature second to none in the academic arena in which the Rose-Hulman credo lies. The Institute in this Centennial Year is winding up a planned ten year program of development designed to implement a dedicated pursuit of excellence in undergraduate education in science and engineering.

This stature provides Rose-Hulman not only a challenge but also the concomitant opportunity; in the coming years, to maintain, develop, and increase its capacity for, and service in, the discharge of the responsibilities it has undertaken of providing an environment of academic freedom and motivation, oriented to ever changing conditions, in which its students may be inculcated with both the professional tools with which, and the determination with which, they may make a significant contribution to themselves and to the industrial community as stable professional citizens in our American tradition of social responsibility, self-reliance, freedom of thought, and respect for law and order.

Rose-Hulman is a small private institution dedicated to "the pursuit of excellence in undergraduate education in science and engineering". If the private educational institution is to justify its continued existence as a responsible agent of the American social order, it should identify the product it offers to the American public in order that the public may determine its acceptance or rejection.

The Rose-Hulman interests are directed to the undergraduate level to provide a basis for further pursuit, either in a profession or in education and research. It has a tradition of casting its students in the mold designed by the pattern makers of our American heritage in order that its graduates may take their place in the industrial society of America with a deep-seated respect for the individual liberty and opportunities generic in the system of private enterprise. The Rose-Hulman graduates are inculcated with the philosophy that equality under the law and individual submission to the political responsibilities of their government are essential to the well-being of everyone.

One of the main challenges with which Rose-Hulman has been confronted within the last ten years has been that of recruitment - recruitment of faculty, recruitment of students, and the recruitment of the funds with which to underwrite its educational program. It has a student body not only of high quality, both intellectually and morally, but of distinctive character in which intellectual curiosity and awareness of social ferment motivate the dedication to succeed within the framework of this American heritage. Rose-Hulman has a faculty - if not affluent in the monetary sense, nevertheless, dedicated to the task and eminently capable in educating

these students in the ever changing scientific fields of learning involved and also dedicated and capable of inspiring them in the intellectual and sociological pursuits commensurate with the Rose-Hulman philosophy. Rose-Hulman also has an alumni group not only outstandingly successful in the profession and a living testimonial to the efficiency of the institutional tradition, but also when called upon, exceptionally responsive to the needs of the Institution.

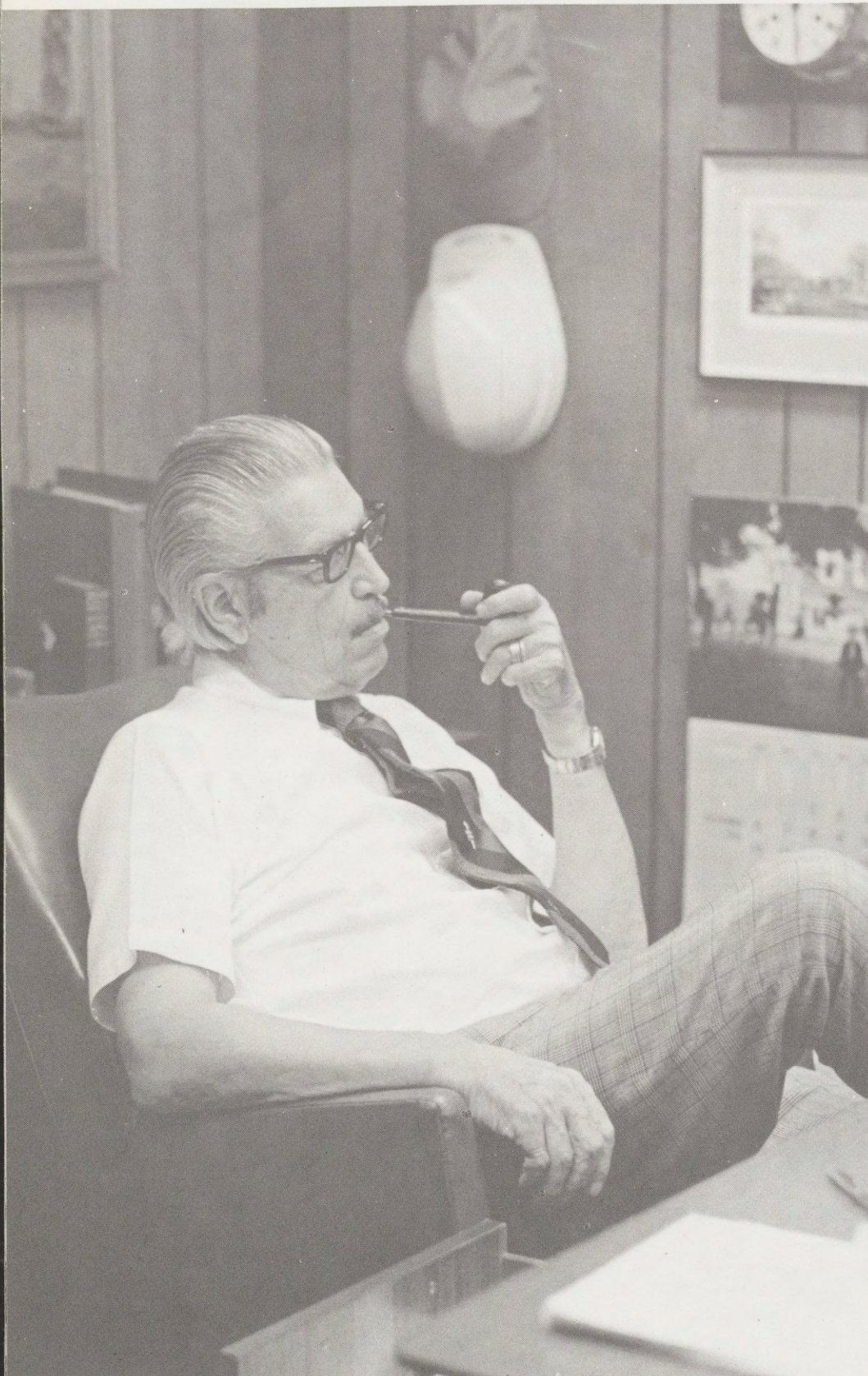
These characteristics of Rose-Hulman, its philosophy, the character of its students, the character of its faculty, and of its alumni, are not fortuitous. They have evolved only because of the capable, dedicated, resourceful and far-sighted leadership with which the Institute has been blessed.

Throughout the Centennial Development Program, formally instituted ten years ago by the Board of Managers and the President, Rose-Hulman has been afforded the benefits of leadership by one who will leave a mark on the Rose-Hulman history as yet unequalled. Dr. John A. Logan as President of the Institute since 1962 not only has been responsible for implementing this Program but in leading such a gargantuan effort he has also been able to engender in and among the student body, the faculty, the Board of Managers and the alumni the spirit of cooperation, rapport and dedication to the common goal that has both assured the success of the Program and provided a solid foundation upon which the Institute may approach its second Centennial.

Dr. Logan, at the meeting of the Board of Managers of October, 1974, announced that he will have reached the age of retirement such that he would retire as President of the Institute at the end of the 1975-76 year on August 31, 1976. In accordance with the mandatory retirement policies of the Institute, the Board was, of course, constrained to respect this result of the passage of time and institute the processes for locating Dr. Logan's successor. The suggestions, recommendations and help of each and all of the alumni as well as of the student body, the faculty and friends of Rose-Hulman are solicited in this effort. Communications pertaining to this request should be addressed to Presidential Search Committee, attention Dr. Herbert Bailey, Executive Secretary, at the Institute.

When Dr. Logan lays down the mantle of responsibility, the first century of Rose-Hulman will have come to a close and the second century will have begun. This Centennial Report provides not only a testimonial to Dr. Logan's expertise and accomplishments but also an accolade to his entrance into the Rose-Hulman "Hall of Fame".

Benjamin G. Cox, Chairman,
Board of Managers



A Message from Dr. John A. Logan

Status of In

John A. Logan, President

of Institute 'Bright and Healthy'

To sum up in a phrase, the status of Rose-Hulman as it faces its second century, is "bright and healthy." During its first hundred years the Institute's emphasis on excellence . . . in its student body . . . in its faculty . . . in its teaching . . . has culminated in what is now, undoubtedly, the finest undergraduate college of science and engineering in the nation. As a result, Rose-Hulman faces the Twenty-First Century with confidence; confidence in itself, its mission and its future.

Our ten-year program of expansion and development is now nearing completion. During this time enrollment has doubled and student quality has increased. We have completed a million-dollar renovation of our Main Building and constructed the Student Union, four new dormitories, Crapo Hall classroom building and the new Learning Resources Center. Other less obvious improvements have been the construction of a new headquarters for Buildings and Grounds, the Rotz Engineering Laboratory for civil and mechanical engineering, a partial renovation of Shook Fieldhouse and the area's first installation of a synthetic playing floor. We also developed a fraternity park and in general have upgraded campus facilities. Unfortunately, we still lack the vitally-needed new recreation facility, which now has our highest priority. This new facility is essential to provide increased opportunity for student activities on

Fall, 1974

the campus, particularly in the field of individual sports, and to make Rose-Hulman more competitive, facility-wise, with other top-flight science and engineering schools across the country.

Flexibility has always characterized the philosophy of the Institute, and it has, over the years, developed new programs or abolished old ones as national needs required. Typical of this is the development of our program in Technology Assessment, which combines in an unusually meaningful way, science and engineering with the humanities. Technology Assessment, based on the use of systems analysis, offers a powerful tool in assuring the logical development of technology for the future, and the Rose program is one of the most imaginative in the nation.

Rose-Hulman has also taken leadership in investigating the possibilities of interinstitutional cooperation. During the past summer the campus has been headquarters for an intensive study of possible cooperation between the Institute, St. Mary-of-the-Woods, Wabash, DePauw, Indiana State University and the Indiana Vocational and Technical College. This study offers considerable potential both for curricular enrichment as well as over-all economy.

Athletically, the most important development in recent years has been our admission to the Collegiate Athletic



The new Learning Resources Center - a quiet place to study.

Conference. This Conference is made up of a group of small colleges (Centre of Kentucky, University of the South, Southwestern at Memphis, Principia and Rose-Hulman) which share a common philosophy regarding the importance of academics and a view that athletics should not be subsidized, but should participate for the pure joy of competition and for the many advantages which competition brings. Rose has a rich athletic tradition going back to the beginning of the Century when our football teams played such athletic giants as Notre Dame, Vanderbilt, Indiana and Purdue and our track team, on several occasions, won the State collegiate championship. Today, while our objectives in football are more modest, we still compete in the "big time" in rifle, chess, drill team and golf, with schools such as Ohio State, Chicago and the University of Houston. In an all-male school athletics are of particular importance, providing at least an alternative to some of the attractions of a coeducational institution.

Rose has, however, by no means confined its interest to academics, athletics and the numerous clubs on the campus; it has now become a recognized center for the arts. In addition to the fine collection of British Watercolors (one of the three best in North America), it has received the Tri Kappa Collection of Indiana Artists on permanent loan, and these will be displayed in the new Library-Learning Resources Center. A Fine Arts Commission has been formed and is active in collecting Chauncey Rose memorabilia, including furniture and art objects of the early Victorian period. Our new Archives

Room will be a definite addition to furthering this objective, and it is our hope that at sometime in the future we may be able to construct a Fine Arts Building. The Department of Humanities, Social and Life Sciences has always been an important contributor to a Rose education and this program has been given added impetus through the generous gift of the late Mrs. Elsie Pawley with an endowment of over a quarter million dollars dedicated to furthering humanities programs on the campus.

The Hulman gift has, undoubtedly, been the most important single event in Rose's history since Chauncey Rose's original bequest. Its potential has not yet been fully realized but it has given us a measure of financial security which so many small schools lack. This does not mean that we do not need continued alumni support, both in terms of annual giving and capital grants. The Hulman gift alone is not enough to assure that we can remain competitive, and we must continue to maintain the high level of alumni giving which has characterized the Institute since the alumni-support program was instituted. In connection with financial support, we are, of course, deeply indebted to the Lilly Endowment of Indianapolis, which has been a most generous contributor to the Institute over the past twenty years. They have recently offered Rose-Hulman a challenge grant of \$750,000 on a matching basis, a challenge which we have almost met, and hope to complete by the end of the present year.

Another important event in 1974 has been the decision of the Indiana Society of Chicago to honor Rose-Hulman at its annual black-tie banquet which will be held in Chicago on December 7, 1974. We are the first independent college in Indiana to be so honored and will share this honor with the Indianapolis Speedway. This is always one of the most important social occasions in Chicago and will give us valuable publicity in Chicago as well as throughout the State of Indiana.

A matter of continual pride to the Institute is the success of its graduates in all parts of the world. Our degree programs in chemistry, chemical engineering, civil engineering, computer sciences, mechanical engineering, electrical engineering, physics, mathematics and mathematical economics produce graduates who are in great demand throughout the country and our success in placing our graduates in medical schools, graduate school, Bell Laboratories, General Motors, General Electric, etc. is proof that our product is what the nation needs. It is difficult to single out individual graduates as examples of the advantages of a Rose-Hulman education, but within the past year Dr. Fujio Matsuda, Class of 1949, has been elected President of the University of Hawaii; Robert Shattuck, Class of 1936, formerly Vice President



Learning Resources Center



Archives room

for Development of the Borg-Warner Corporation, has been honored through the establishment of the Robert Shattuck Distinguished Professorship of Engineering (through an endowment by the Borg-Warner Corporation), and Rose graduates now occupy the chairmanship and presidency of the Rohr Corporation in Chula Vista, California, (Burt Raynes of the Class of 1937 and Fred W. Garry of the Class of 1951).

Fall, 1974

Although we do not guarantee to place every graduate of the Institute, we normally have two or more recruiters on the campus for every graduating senior, and the personal attention which our Placement Office gives to our seniors is unique and an invaluable part of the Rose-Hulman program.

Computers play an increasingly important role on the campus. More and more of our students are purchasing sophisticated pocket models, and the Institute is keeping pace with the decision to install new PDP and Xerox computers in the Waters Computer Center. With the addition of the new Xerox unit later this year, Rose-Hulman will have one of the finest computer facilities of any small college in the nation.

In the final analysis, regardless of the progress which has been made physically, the ultimate success of the Institute depends on people; Rose-Hulman has always been people-oriented rather than for materials-oriented and this policy has resulted in a teaching staff and administrative group, including Buildings and Grounds, in which all of us take a justifiable pride. They, together with our alumni, students and the Board of Managers, form the Rose team; their sense of dedication and their belief in Rose, fully warrants a sense of pride in Rose-Hulman's accomplishments during our first century, and confidence that the Institute will move on to even a bigger and brighter future.



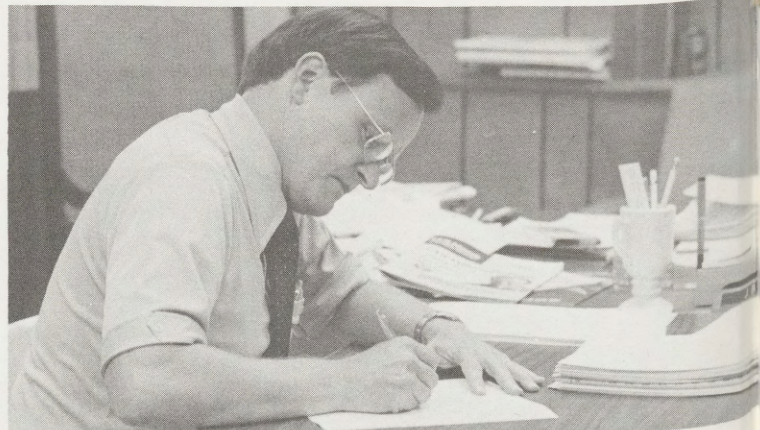
Good Teaching Is Name of Game

Rose-Hulman enters its second century with an excellent faculty whose members have been selected for their interest in and dedication to undergraduate teaching. We continue to offer an educational environment, devoid of a "publish or perish" atmosphere, in which close student-faculty associations are the rule and not the exception.

In academic year 1974-75, sixty-one full time equivalent teachers will devote their time to classroom and laboratory instruction and to student counseling and advising. This well qualified group, 79 percent having earned doctorates in their respective fields, is a complementary mix of mature mentors and young educators whose enthusiasm and expertise more than compensate for a lack of classroom experience. The median age of our faculty members is 39, while the median age of college teachers in the United States is 42 years of age.

With an average enrollment of 980 full time equivalent students, the student to faculty ratio is 16 to 1 which is relatively high for an undergraduate school of engineering and science. This ratio is necessary for efficient, economical operation and to maintain it requires that each teacher carry heavy teaching loads and that administrative personnel teach in addition to performing other duties. Each division chairman teaches several courses and the president, senior vice president, dean of faculty, registrar, director of the computer center and the director of counseling all teach one or more courses during the year. The average Rose-Hulman faculty member is in the classroom or laboratory from 12 to 15 hours per week and is responsible for 750 student credit hours per year. In addition to teaching, all faculty members spend considerable time counseling students and participating in committee work. The time available for professional interests and scholarly activities is therefore severely limited.

Although this young faculty is providing a quality undergraduate education today, we must plan for the future to meet the serious challenge of keeping faculty members professionally competent and intellectually alive. We are attempting to meet this challenge by providing funds for participation in professional meetings, short courses, and seminars. The annual operating budgets of the academic divisions for this purpose are supplemented by a special Faculty Development Fund and by the Dean of Faculty's Discretionary Fund, which is also used to permit prompt funding for innovative ideas, and to provide a contingency fund for academic operations. Although we have significantly increased the amount of funds allocated for faculty enrichment during the past three years, our currently available resources are insufficient to allow all faculty to benefit at a desirable level.



Dr. James B. Matthews
Vice President/Dean of Faculty

The Institute has also introduced a leave policy to encourage faculty members to broaden their backgrounds and interests. This will enable faculty to be placed in temporary industrial assignments, to attend outstanding graduate schools to update their formal education, and to participate in exchange programs with faculty from other schools. For instance, we have four faculty members on leave during 1974-75 who are on temporary assignments ranging from research on the space shuttle to industrial problems in chemical processes.

The academic facilities of the Institute are generally excellent. Extensive remodeling of the old classroom and laboratory building; construction of Crapo Hall, the Rotz Mechanical Engineering Laboratory, and, most importantly, the Learning Resources Center; and relocation of the Waters Computing Center are improvements that have provided outstanding facilities for undergraduate education. In the near future it will be necessary to provide new facilities for laboratories in electrical energy conversion, fluid mechanics, and environmental engineering. It will also be necessary to continue to provide modern equipment and instrumentation in all classrooms and laboratories.

We recently took action to acquire a Xerox XDS530 computing system to replace the IBM1130 and the hard patch link to the CDC 6500 at Purdue. This followed an intensive 16-month study by the Computing Center Committee of the faculty that was charged to determine a computing system configuration that would provide improved capability at less cost. Following the committee recommendations we have initiated a four year program of phased addition of vendor equipment, along with interfaces and software to be designed by computing center personnel. The PDP-11/40 time-shared computer acquired in 1972 will be an integral part of the new system which will provide improved academic and ad-

ministrative computing capabilities in a more cost effective manner. The new system avoids the acquisition of an unnecessarily large initial capacity while providing for expansion consistent with the growing demand for services in the areas of numerical solution of problems in engineering and science, graphical presentation of solutions, and interaction with time-shared and batch processing facilities from remote terminals by students, faculty and administrators.

In our academic programs we have continued to devote our limited resources to those areas in which we have maximum strength. To this end we have added an environmental engineering option to the civil engineering curriculum and have discontinued programs in aerospace engineering and biological engineering. Based on a recent study by an ad-hoc committee, we have determined that it would be unwise for Rose-Hulman to add any new B.S. degree programs at this time. We currently offer curricula leading to B.S. degrees in chemical engineering, chemistry, civil engineering, computer sciences, electrical engineering, mathematics, mathematical economics, mechanical engineering, and physics. We have also determined that we should not offer associate or baccalaureate programs in engineering technology at this time.

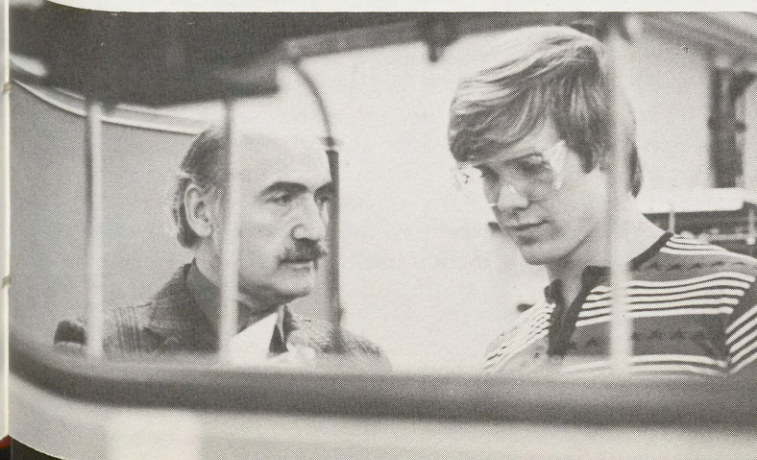
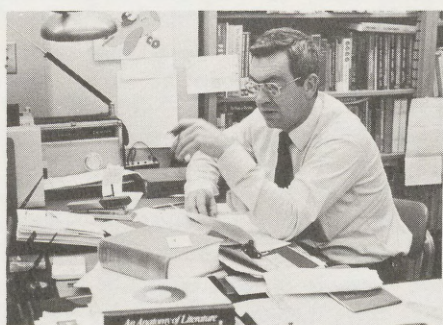
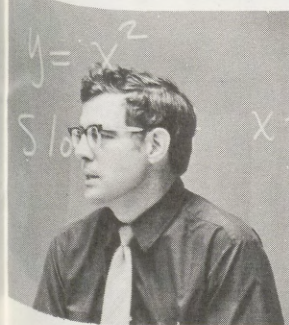
Although in the past we have offered M.S. degree programs in nearly all of the areas mentioned above, we have decided to limit future graduate offerings to electrical and mechanical engineering, two areas in which we have adequate staff and facilities for advanced work. However, with the advent of accreditation by the Engineers' Council for Professional Development of advanced level (to the M.S. degree) programs, it may become necessary for the Institute to become more active in the field of graduate education. The Institute has taken a position of opposition in principle to the concept of advanced level accreditation and we will continue to emphasize basic level accreditation.

During the past three years the program in humanities and social sciences has been revised and restructured. Each student is still required to complete a minimum of 36 credit hours in these important areas of study, but now he may elect his courses from a wide range of offerings. By proper selection of courses he may complete an area minor in economics, history, language and literature, German, Russian, political science, psychology, or sociology. We are also deriving benefits from a new spirit of cooperation between faculty members in humanities, social sciences, and technical areas. In an atmosphere of mutual respect, cooperative efforts on projects and programs to relate technology to societal needs have been highly successful.

Last year we established on campus The Center for Technology Assessment and Policy Studies. The purpose of the Center is to explore, encourage, and apply technology assessment and other methods of systematic analysis to public and private policy-related problems. Activities have included an undergraduate course featuring such five-week group public projects as "Oil Shale Production" and "The Cashless Society" as well as a workshop in which participants conducted a brief assessment of "Mass Transit in Cities of Moderate Size". Center personnel first developed the methodology and are now directing a study of inter-institutional cooperation at the collegiate level in the Wabash Valley. With the assistance of a planning grant from Lilly Endowment, CTAPS is also actively engaged in development of a multi-institutional program in technology assessment that will involve students and faculty from several schools including DePauw, Indiana State, Indiana University, and Rose-Hulman on teams to assess projects of a multi-disciplinary nature.

Our summer academic programs, Operation Catapult and Summer Institute, continue to be successful. Two sessions of Operation Catapult, a project oriented four-week experience were conducted in 1974 for 140 young men who are now in their senior year in high school. The pre-freshman Summer Institute was conducted in 1974 for the eleventh consecutive year. However, in the past two years the content and philosophy of this program have been considerably altered to provide intensive remedial work in mathematics and English. Early evidence indicates that this program will help reduce attrition of freshmen.

On balance, the academic functions of the Institute are in good shape. We enjoy a particularly outstanding, well qualified and dedicated faculty. Even though certain laboratories are needed and equipment and instrumentation must be continually updated, our academic physical facilities have never been better. The academic programs are viable and provide one of the most outstanding undergraduate educations available today.



Student Body Rated S

As Rose-Hulman comes to the close of its first 100 years of operation and looks forward to the second century, the school has the strongest student body of its history.

At the close of the 1973-74 academic year the all men's cumulative grade point average reached an all time high of 2.82. There were 295 students of a spring quarter enrollment of 934 who achieved honor status which is a 3.1 grade point average. This represented 31.5 per cent of the undergraduate enrollment. Due to careful selection of incoming freshmen and intensive counseling by our faculty advisors and central counseling office, attrition has been significantly reduced during the past decade with a new low attrition percentage of 8.8% for the 1973-74 school year.

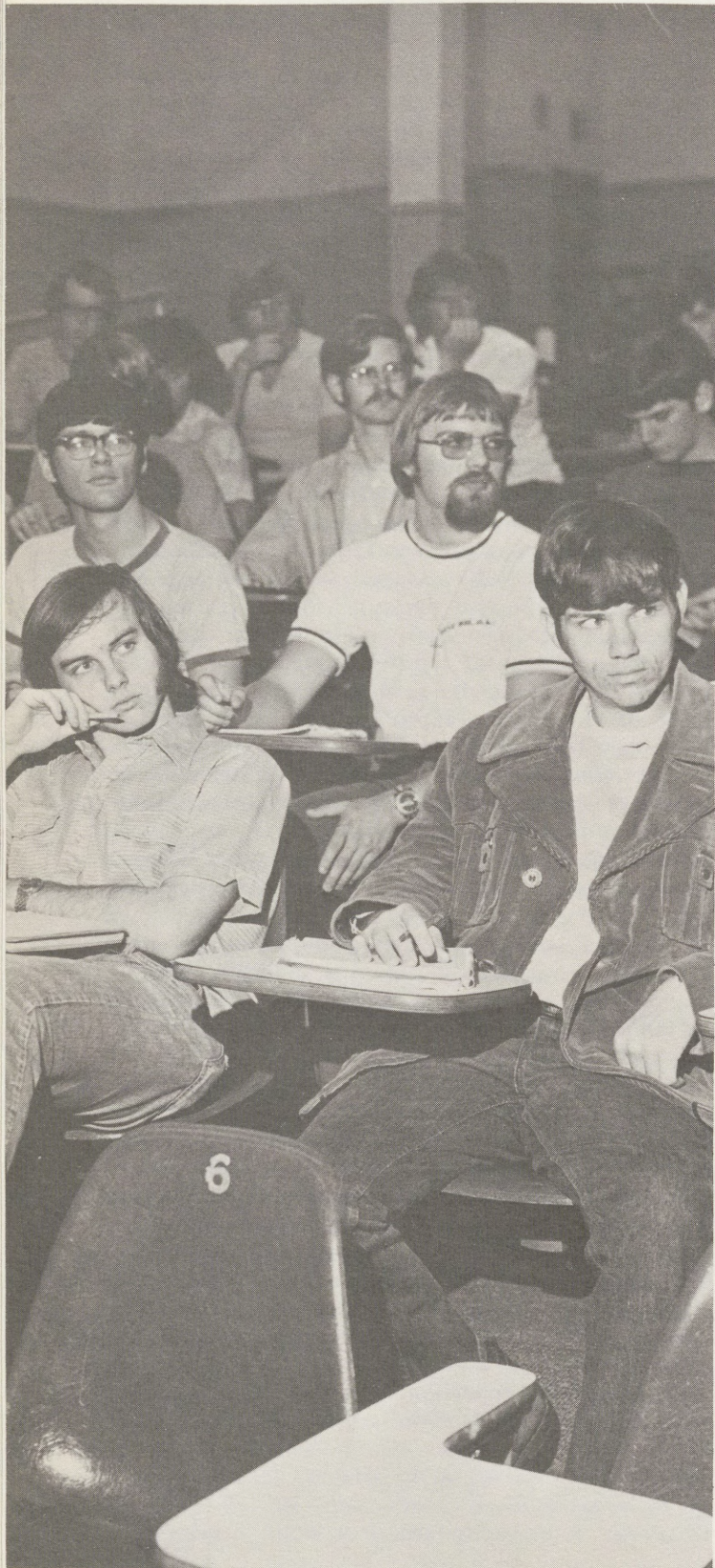
Although the average enrollment for the 1973-74 school year was down some 6 per cent from the two previous years, this was less than the average decrease shown in engineering school enrollments throughout the nation. By aggressive efforts on the part of our admission counselors, the trend in decreasing enrollment has been reversed for the 1974-75 academic year. There are 320 freshmen enrolled for the fall quarter of the 1974-75 school year, an increase of 50 first year students over the previous year, and it is estimated that this number of freshmen in the years ahead will be sufficient to maintain an average overall enrollment of 1,000 to 1,025 students.

Although academics at Rose-Hulman is of primary importance, it is not the whole story of the Rose-Hulman student. He is also very active in extra-curricular or out-of-class activities. The Student Body Government coordinates the varied clubs and student organizations which range from interest or hobby groups to social, professional, service, and religious organizations. Approximately 85 per cent of the student body participate in one or more of these organizations and their combined budgets to support their operations is in excess of \$30,000 (excluding the budgets of the six social fraternities whose financial structure is supervised by their respective house corporations).

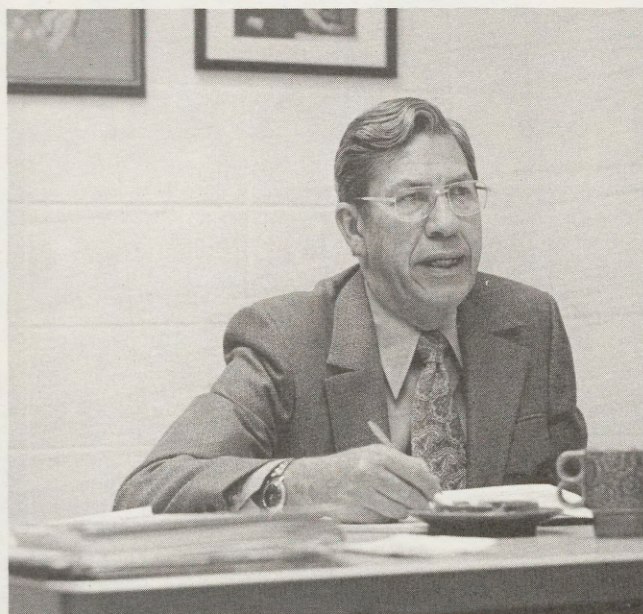
The Student Activities Board, under the auspices of the Student Body Government, provides entertainment for the entire student body. Each student is reached through one or more of their efforts. During the 1973-74 school year, three all-school concerts were held on the campus, two school dances, four Coffee House presentations, six convocations and eight full length movies.

Other organizations which received allotments from the Student Body Government and, through their efforts, contributed to the student life on campus were:

The Band - A very enthusiastic group of 50 members play as a pep band at all home varsity football and basketball games. The band presents two concerts per year and goes on a three day tour each spring entertaining high schools in the area.



ed Strongest in School's History



Ralph M. Ross
Vice President/Academic Affairs

The Glee Club - A group of 30 to 50 men perform at both Rose-Hulman and outside community functions, doing credit to themselves and to Rose-Hulman. They also take a three day tour in the spring, performing for high school groups in the area.

The Thorn - A weekly student newspaper gives outlet to those desiring experience in news publications.

The Modulus - A yearbook publication affords the staff opportunity to organize and present the highlights of the year at Rose-Hulman and publish for the benefit of all students.

WRTR - A broadcast club of approximately 40 members who program and operate a carrier wave A.M. radio broadcasting station limited in range to the campus resident halls.

The Radio Club - This is a short wave radio club, capable of receiving and sending messages for their entertainment and serves the area in radio communications during periods of emergency.

The Camera Club - Some 40 to 50 members satisfy their interest in photography through the activities of this club. They have complete dark room facilities; furnish instruction for new members; hold an annual photography contest; and provide various publications with many of their pictures.

The Rifle Club - This organization serves some 60 students whose interest is in marksmanship. They have use of a very satisfactory indoor range and from their group evolves a varsity rifle team that competes well with both small and large schools throughout the region.

Fall, 1974

The Astronomy Club - An active organization serving some 40 members, furnishing instruction and observational facilities through its 12-inch telescope. They hold seminars and field trips to neighboring observatories.

The Chess Club - About 20 students find a real interest in this club and compete with other schools in regional and national competition with outstanding success.

In addition to the hobby and interest groups which are supported through allotments from the Student Body Government, Rose-Hulman students participate in a variety of other campus organizations which compliment the professional, social, and spiritual life of the student.

National Honoraries and Societies

Alpha Phi Omega - Honorary Service Fraternity.

Blue Key - Honorary Service Fraternity.

Eta Kappa Nu - Honorary Electrical Engineering Fraternity.

Omega Chi Epsilon - Honorary Chemical Engineering Fraternity.

Omicron Delta Epsilon - Honorary Economics Fraternity.

Pi Mu Epsilon - Honorary Mathematics Fraternity.

Pi Tau Sigma - Honorary Mechanical Engineering Fraternity

Sigma Pi Sigma - Honorary Physics Fraternity.

Tau Beta Pi - Engineering Honor Society.

American Society of Civil Engineers.

American Society of Mechanical Engineers.

American Society of Chemical Engineers.

Institute of Electrical and Electronic Engineers.

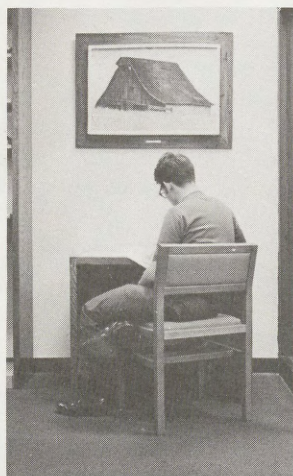
Other interest groups operate on campus from funds generated within their own organization as recognized interest groups within the Student Government framework.

Rose-Hulman Racing Association - A group of students whose interest and programs deal with the engineering and performance of racing cars.

R-Men's Club - The membership is made up of varsity lettermen whose activities enhance the varsity program and they derive funds for their projects through concessions and programs at all varsity home functions.

Rose Men In His Service - A group of students devoted to living by Christian principles and ideals. They meet regularly for spiritual, social, and recreational enlightenment.

Athletics and recreation are an area of pride at Rose-Hulman -- physical exercise or physical training is programmed on an optional basis as we feel it should be. This does not mean Rose-Hulman students have no opportunity for organized physical relaxation or that participation is minor. Approximately 80 per cent of the



student body participate in some form of intramural or varsity sport.

League play is provided in intramural touch football, basketball, volleyball, softball, tennis, and track. One athletic coach devotes full time to the organization, scheduling, and supervising of the intramural program.

Rose-Hulman competes in varsity football, basketball, baseball, track, cross country, tennis, golf, and rifle.

In all sports, emphasis is placed on enjoyment and sportsmanship and participation opportunities are provided as an extra compensating factor to a busy, demanding, and rigorous academic program.

We are blessed with a campus large enough to support the varied interests of our student body. However, with the increased enrollment and heavy participation in recreational and athletic activities, we are urgently in need of an expanded recreational center which has been included in our physical plant expansion as a part of our Centennial Development Program. We hope ground breaking for this facility will come within the next year.

Rose-Hulman has adequately met the resident needs of her students during its enrollment growth of the past decade. Six residence halls housing 570 students fit picturesquely into the landscape surrounding our two lakes. A student union building, completed in 1966, nestled between the residence halls on lake side, adds to the beauty of our campus and serves as a center for student activity and houses our bookstore and cafeteria.

While many colleges have over-built for resident students, we have full occupancy for the 1974-75 school

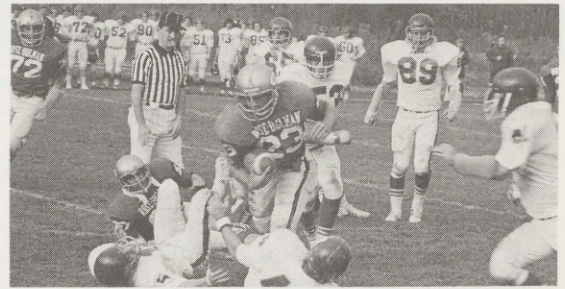
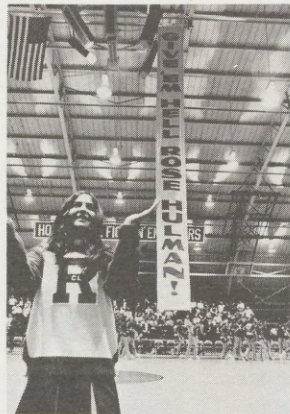
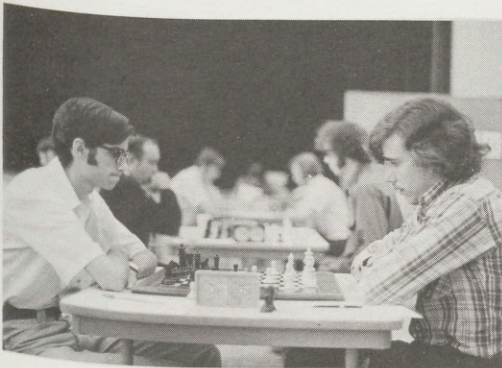
year and look forward to a healthy balance between campus and off-campus residents. We continue to require freshmen students to either live in residence halls or commute from home. However, we make no such demands of our upper three classes. By their own choosing, approximately 55 per cent of our students reside on campus, 18 per cent in fraternity houses, 10 per cent commute from home, 10 per cent live in rooms or apartments in town and 7 per cent are married students and maintain their own homes in the Terre Haute community.

An inter-dormitory council provides for much of the social life of its residents and hold regular meetings designed to review dormitory life and give guidance and assistance to the Residence Hall Director.

Food service is catered by Saga Food Service, which provides for student feeding and special luncheons and dinners for both school functions and community organizations. We feel this service adequately cares for the needs of our students and provides good public relations through serving community requests to use our beautiful union facility.

The Institute maintains a Health Service with a full time health administrator in attendance 24 hours a day, and a physician who makes calls on campus each morning, Monday through Friday. Each student entering Rose-Hulman is requested to have a thorough physical examination and a medical form reporting the results of this examination and the history of immunization and other background health information is required of all

Echoes



students. These records are kept on file in the Health Service office. The Institute desires to work in close cooperation with parents and the family physician and this record is necessary to properly serve the student's health needs.

The Institute cannot assume responsibility for the regular treatment of the student's chronic conditions present when he enters the Institute; however, the Health Service will supervise the treatment and general health of a student while he is under the care of a family physician. Ordinary drugs and medicine are furnished free but certain services such as x-ray examinations, special drugs and laboratory tests are not available on campus and the cost of these services must be borne by the individual student.

All students are provided accident and health insurance, with \$500 coverage, which is described in a booklet given to each student at registration time. This protection covers all students unless the parent waives it at registration.

The average Rose-Hulman student comes from a home with a median socio-economic background, having an income in the \$12,000 to \$15,000 range. Using national formulae developed by College Scholarship Service, we find the contribution we can rightfully expect from this average family for the higher education of one sibling is \$2500, which leaves the student a financial deficit of \$1600 if he is to meet the 1974-75 budget for educational costs at Rose-Hulman.

We have always been cognizant of the limited financial
Fall, 1974

resources of our students and feel we have kept pace with the ever increasing need for financial assistance. For the 1973-74 school year 778 students of an average enrollment of 950 were given a total of \$1,265,070 in financial aid, an average of \$1626 per recipient. A breakdown of this aid indicates the following sources of support.

Indiana State Scholarships and Grants	\$460,263
Scholarships and Grants from Institute funds	238,441
Federal Programs - Supplemental Educational Opportunity Grants and Basic Educational Opportunity Grants	24,509
Corporate and other grants	\$195,010
National Direct Student Loans	71,533
Federally Insured Loans	215,011
Rose-Hulman Loans	33,963
College Work-Study	26,340
Total	\$1,265,070

We realize with the tuition increase at Rose-Hulman for the 1974-75 school year from \$2055 to \$2400, the average student is going to have an increased financial need over the 1973-74 school year and we have taken steps to meet this increased demand. Rose-Hulman's own contribution to the financial aid budget has been increased from the 1973-74 budget of \$266,000 to a 1974-75 budget of \$348,000 and it is anticipated that State, Federal and corporate support will likewise improve to give a financial aid total of \$1,400,000 for the 1974-75 academic year with assists going to 830 students.

'We've Turned Corner, But Not Out of Woods'

In early September, 320 men became official members of the Rose-Hulman student body. In view of the national trend for declining enrollments at the four-year schools, this year's freshman class (19 percent larger than last year's group) represents a turnaround in public interest and demand for engineering and science as an education and as a profession. The new class, coupled with a high sophomore retention rate, has eliminated an anticipated enrollment decline for 1974-75. Total enrollment now stands at 1,030, just 20 shy of our projected goal for the next few years.

However, even more gratifying is the fact that we have "bounced back" in one year with a freshman class which is perhaps the most academically talented class ever assembled at Rose-Hulman. On paper they're "super"! The middle man in the group ranked in the top six percent of his high school class and scored 540 in verbal and 650 in math on his College Board Scholastic Aptitude Test. Those scores rank our typical student at the 82 percentile on verbal and at the 92 percentile on math for all college bound students in the country. Those same scores represent the 90 percentile and the 97 percentile respectively for all students taking the exam. Obviously, Rose-Hulman has one of the highest math averages in the nation, but what we're really proud of is that our verbal score is now higher than the average verbal score at many of the top liberal arts colleges.

Fifty-one men, or 15 percent of the class, ranked in the top three positions in their high school class. Seventeen were named as National Merit Finalists, eight won four-year \$16,000 Army ROTC Scholarships, and 86 percent of our Indiana freshmen won Indiana State Commission Scholarships.

In high school activities over half of our freshmen were members of Honor Societies and Beta Clubs; 60 were



Duncan C. Murdoch
Dean of Admissions

recognized for high achievement in science fairs and math contests; 49 were Boys' State delegates; 72 were Scouts (25 Eagles); 58 were senior class or student council officers; 18 were active in publications; 10 debated and 16 participated in drama; 65 were bandmen; 29 sang in vocal groups; and 148 lettered in a varsity sport.

Sixty-two had one parent who attended college; both parents of 40 attended; and 218 or 67 percent of the class are first generation college students. Seventy percent of

Facts and Figures on Admissions at Rose-Hulman . . .

	1962	1963	1964	1965	1966	1967	1968	1969
Freshman Enrollment	202	183	247	310	258	289	288	371
Number Out-of-State Freshmen	72	64	97	124	116	116	122	111
Percent Out-of-State Freshmen	35	35	40	40	32	40	43	30
Total	526	574	658	795	843	970	980	1,030
Tuition					\$1,500	\$1,500	\$1,650	\$1,775
Median Percentile Rank	79	81	84	86	91	91	90	91
Median S.A.T.	1,176	1,180	1,201	1,202	1,222	1,199	1,206	1,191
Number of Ind. St. Scholarship Winners					56	105	100	111
Percent of our Ind. Frosh Who Won St. Sch.					35	61	60	61

last year's Operation Catapult group are enrolled and 75 percent of the class received financial assistance in the form of scholarships, loans, grants and jobs.

Geographically, the class appears to have a healthy distribution with students representing 16 states and three foreign countries. However, a closer look reveals that 257 men (80%) are from Indiana, with an additional 44 men (15%) coming from the four surrounding states. Twelve of these freshmen came from Illinois within a 60-mile radius of Terre Haute with only four coming from the greater Chicago area. In Ohio, the same story . . . seven are from the Cincinnati area; five from Dayton; three from Cleveland; and four are from other areas, bringing the total to 19 students. After that our distribution scatters to Pennsylvania with three men; New York, Virginia and Arizona each with two; and New Jersey, Kansas, Maryland, Missouri, Colorado, Washington and Oregon each with one.

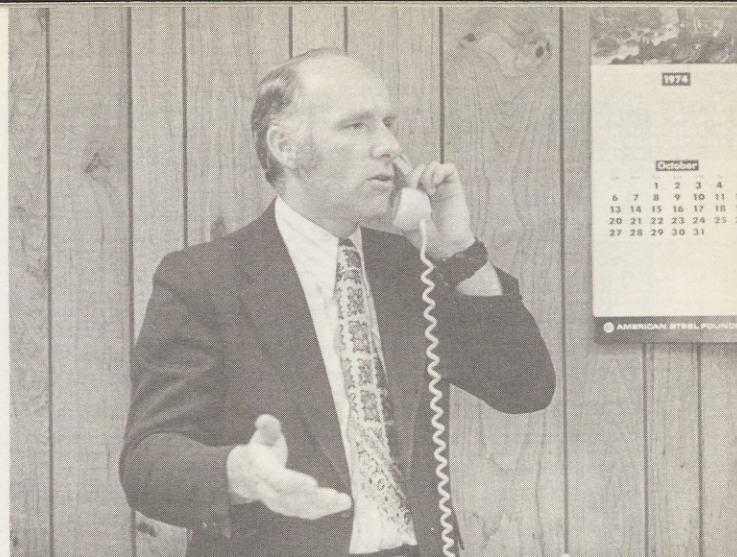
What all this boils down to is that while we are a unique institution with an outstanding faculty and one of the brightest student bodies in the country, we are virtually unknown in the student recruitment market outside of Indiana. Rose-Hulman Institute of Technology may be one of the best kept secrets in the Western World, as illustrated by a recent question from a high school counselor in Northern Illinois who asked if we had received accreditation from the American Association of Junior and Community Colleges.

It's obvious that we have a problem. But at least it is consoling to know that we are in a position to worry about such things as geographical mix, admissions standards, recreation buildings, scholarships and national impact instead of just X number of bodies to fill a class or the dorms. Not too many colleges can afford the luxury of worrying about anything but enrollment. We're not "out of the woods" yet, but we feel we have turned the corner. Of course, we will need lots of help from alumni, parents and friends to stay there, and later on in the year we will contact you about how you can support the effort.

... a 13-year Comparison

	1969	1970	1971	1972	1973	1974
968	374	356	348	337	275	320
288	115	107	105	79	83	64
122	30	30	23	30	20	
43	1,033	1,090	1,142	1,144	1,022	1,025
980	\$1,775	\$1,875	\$1,875	\$2,055	\$2,055	\$2,400
650	92	86	91	91	92	94
90	1,195	1,195	1,179	1,170	1,160	1,190
206	188	175	190	212	192	255
100	72	68	77	88	91	86
60						

Fall, 1974



William W. Sisson
Director of Placement

Placement Picture Bright

The demand for candidates in technical disciplines combined with a shortage of engineers made the 1973-74 college recruiting season an exciting one.

Our students here at Rose-Hulman were no exception as most had prepared themselves well both academically as well as extra-curricularly. Although the economy was a prime factor, I personally attribute the efforts of our faculty, staff and students themselves as being instrumental in making this past year a rewarding one for our '74 graduates.

The keen competition for engineers is evidenced by the fact that offers to bachelor's candidates in engineering curricula increased 31 per cent nationally and 34 per cent here at Rose. According to several national annual Salary Surveys the 1973-74 engineering offers accounted for 56 per cent of the total bachelor's volume.

Mechanical engineering continued to attract the most job offers with other major areas being sought after in the following descending order: electrical engineering, chemical engineering, civil engineering, computer science, mathematics, physics, mathematical economics and biological engineering.

Members of this class averaged 18 job interviews and four job offers. A total of 20 members of this year's class entered graduate school, including five who were admitted to medical school. Our all-engineering average monthly salary offer accepted was \$998 compared to \$995 nationally.

October marked the beginning of another season of interviewing on our campus and all signs indicate an even more exciting year than '73-'74.

Several industrial plants were visited this past summer by faculty members and the Director of Placement. Our graduates who are presently employed by these companies are living testimony that we are preparing our students well. They are accepting job challenges in such a manner that we should be proud of the impact they are making on the employment market including business, industry, governmental agencies and graduate schools of their choice.

Institute Weathers Stormy Financial Year

Rose-Hulman has weathered a difficult financial year and continues in sound financial condition. Frustrating economic dislocations resulting from spiraling costs, high interest rates and slow deliveries presented a real challenge to management. This was met with cost reduction programs, austerity measures and careful financial management.

To illustrate rising costs, consider that mimeograph paper doubled in price and coal went from \$7.05 per ton to over \$18.00. We all know what happened to gasoline. We were, however, able to turn adversity to our favor by taking advantage of high interest rates in our short term investments.

The following material was prepared in response to requests for information concerning the financial operation of the Institute--a report aimed at presenting the financial "state of the institute" message in a less cumbersome manner than the normally accepted methods required in "fund accounting."

Rose-Hulman Institute of Technology maintains its books of account in accordance with the accepted principles established for colleges and universities. Its annual financial report is prepared, audited, and published in this manner. These reports are available on request.

The day-to-day financial operations of the Institute are governed by an operating budget prepared by the administration and approved by the Board of Managers at the February meeting preceding the fiscal year commencing the following September. This budget consists generally of an estimated Statement of Income and a Statement of Planned Expenditures. For the fiscal year ended August 31, 1974 the Institute operated generally in accordance with its fiscal plans for the year. There was a small excess of income over expenditures. However, when bookstore income which is restricted is removed, there is an excess of expense over income of about \$10,000.

These operations have been translated into two informal statements reflecting the actual sources of income and cash receipts, and the actual uses of income and cash commitments. These two statements are supplemented by "pie" charts showing the same information in a graphic manner.

The *Statement of Cash Receipts* reports the "in-flow" of cash to the Institute during the year from the following six principal sources:

1. Amounts received for tuition from students, their parents and other private sources. This amount is not equal to total tuition.
2. Sums received from the State and Federal Governments for student aid, including tuition, equipment and other purposes.
3. Funds received as gifts and grants from private sources for both restricted and unrestricted purposes. Gifts to



Robert T. Willets
Vice President of Financial Affairs

the Centennial Fund are not included since this program is separate from the normal operations of the Institute.

4. Income derived from all endowments including the general endowment, funds managed by others in the interests of the Institute, and the segregated Hulman Funds.

5. Amounts received for student services, such as room and board payments, fees, rentals, and interest, and including Bookstore income. This amount does not include sources of student aid elsewhere accounted for.

6. Miscellaneous income including interest earned on short-term investments, rentals and salvage, fees and applications and other miscellaneous items.

The *Statement of Cash Commitments* reports the "out-of-pocket" expenses of the Institute during the year under the following categories:

1. The general operating expenses of the Institute which include the direct costs of providing the academic programs and associated administrative costs, the cost for recruitment of students, development costs and the costs of providing the day-to-day operations (such as utilities) and routine maintenance of plant.

2. The expenses incurred in the provision of student services and facilities which include the cost of food services, dormitory expenses, operation of the Hulman Memorial Student Center, Bookstore costs, direct costs of the athletic and recreational programs, and bond principal and interest payments.

3. Expenditures which have provided for new facilities and for the renovation and improvement of existing facilities consisting of equipment and plant.

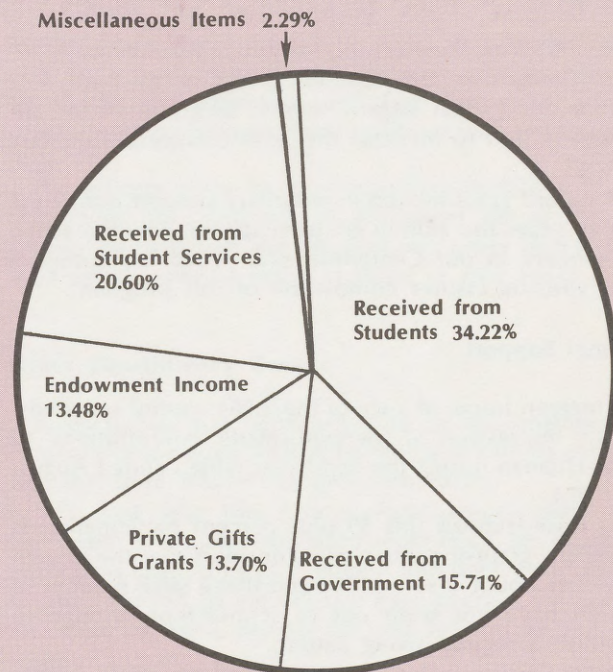
STATEMENT OF CASH RECEIPTS
(Year ended August 31, 1974)

Received from Students	\$1,211,000
Received from Government	
Student Aid	\$549,000
Equipment & Other	7,000
	\$556,000
Private Gifts & Grants	
Current Operating Expense	244,000
Scholarships	170,000
Financing Capital Items	71,000
	\$485,000
Endowment Income	
Funds Managed by Others	83,000
General Endowment	199,000
Segregated Hulman Funds	195,000
	\$477,000
Received for Student Service	
Room	190,000
Board	297,000
Fees, rental, interest	25,000
Bookstore	217,000
	\$729,000
Miscellaneous Items	
Interest on Short Term Investments	71,000
Rentals and Salvage	2,000
Fees & Applications	2,000
Miscellaneous	6,000
	\$ 81,000
TOTAL	\$3,539,000

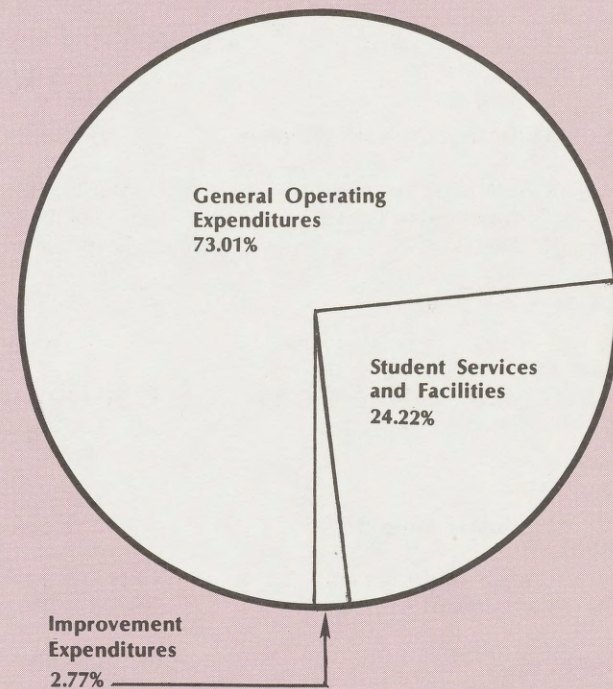
STATEMENT OF CASH COMMITMENTS
(Year ended August 31, 1974)

General Operating Expense	
Academic Programs	\$2,070,000
Student Recruitment	111,000
Development	102,000
Operation & Maintenance of Plant	300,000
	\$2,583,000
Student Services & Facilities	
Food Service	240,000
Dormitories	151,000
Campus Center	74,000
Bookstore	205,000
Sports Programs	90,000
Bond Principal & Interest	97,000
	\$857,000
Improvement Expenditures	
Equipment	98,000
	98,000
TOTAL	\$3,538,000

SOURCES OF FUNDS



USES OF FUNDS



Centennial Program Nears Completion

In 1965 Rose Polytechnic Institute embarked on a 10-year Centennial Development Program to raise \$5.2 million for capital improvements, \$6.5 million for endowment and to increase the level of annual voluntary giving.

A record \$21.4 million in voluntary support during the last 10 years and alumni gift participation which reached 52 percent in our Centennial year reflect an optimism that virtually assures completion of this program.

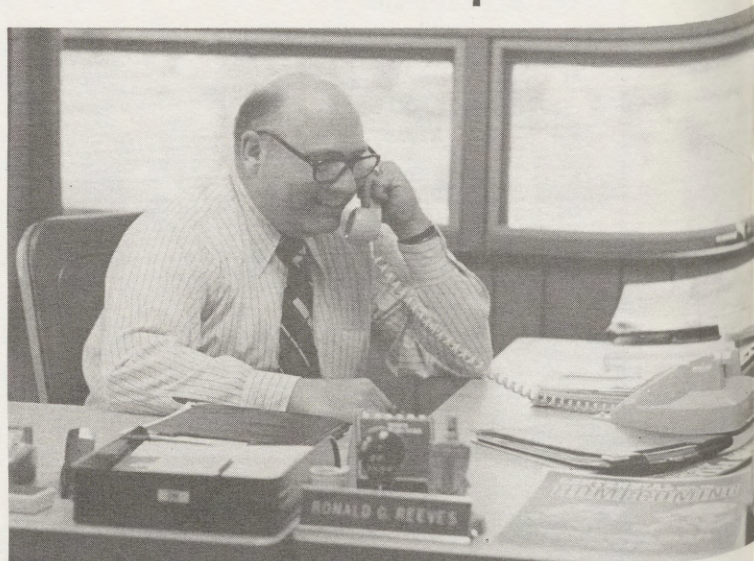
Alumni Support

Nineteen hundred sixty of the 3,764 alumni solicited--or an impressive 52 percent--made contributions to Rose-Hulman during the fiscal year which ended August 31, 1974.

At Rose-Hulman this 50 plus percent participation is especially gratifying when one considers that the alumni body has doubled since 1960 and that a large number of alumni have not been out of school long enough to establish a regular giving pattern.

Fund Chairman Jack Fenoglio and his class agents deserve a special note of thanks for a job well done.

Fifty-two percent surely will rank Rose-Hulman alumni in the top 20 colleges (and perhaps the top ten schools) in the percentage of graduates making financial contributions to their alma mater.



Ronald G. Reeves
Vice President/Development & Public Affairs

According to the Council for Financial Aid to Education, alumni participation of all public and privately supported colleges and universities in the country is 17.7 percent.

Centennial Development Program 1965-1974

Voluntary Support Program	Goal	Cash Received	Pledges	Program
Capital Improvements	\$5,225,000	\$ 2,552,319	\$ 1,290,818	\$ 3,843,137
Endowment Increase	\$6,500,000	\$14,616,103	\$ 327,678	\$14,943,781
Annual Giving	Exceed \$3 million	\$ 4,239,833	\$ ---	\$ 4,239,833
TOTAL	\$14,725,000	\$21,408,255	\$ 1,618,496	\$23,026,751

Final Phase of Centennial Development Campaign 1972-1974

Voluntary Support	Goal	Cash Received	Pledges	Final Phase To Date
Capital Improvements	\$3,500,000	\$ 413,368	\$1,290,818	\$1,704,186
Endowment Increase	\$1,500,000	\$1,172,322	\$ 327,678	\$1,500,000
TOTAL	\$5,000,000	\$1,585,690	\$1,618,496	\$3,204,186

For example, the Council's most recent report on voluntary support to higher education (the report covered 1972-73) reveals that only 21 colleges and universities attained 50 percent or better alumni gift participation. Headed by Vanderbilt with a whopping 61 percent, the list includes Notre Dame, Oberlin and Amherst.

Foundation Support

Many foundations have made contributions to Rose-Hulman's endowment, student scholarships and general academic programs. The most significant support in the past few years has been from:

John W. Anderson Foundation
Ball Brothers Foundation
Cummins Engine Foundation
Lilly Endowment, Inc.
The James S. Kemper Foundation
Weston Wabash Foundation

Corporate Support

During recent years 34 national corporations have been especially generous in their support of Rose-Hulman. Recognition of this particular group of Industrial friends is long overdue. They are:

Aluminum Co. of America
Amax Coal Co.
Amoco
Arvin Industries, Inc.
A T & T Long Lines
Bethlehem Steel Corp.
Borg-Warner Corp.
J. I. Case Co.
Dow Chemical Co.
E. I. DuPont De Nemours & Co.
Ethyl Corp.
Ford Motor Co.
General Motors Corp.
General Telephone Co. of Indiana
Gulf Oil Corp.
Indiana Bell Telephone
Indianapolis Power & Light Co.
Inland Steel Co.
IBM
Lone Star Industries, Inc.
Magnavox Co.
Marathon Oil Co.
Monsanto Co.
Motorola, Inc.
Mueller Co.
Pfizer, Inc.
Pillsbury Co.
Procter & Gamble Co.
Public Service Indiana
Shell Oil Co.
Union Carbide Corp.
Western Electric Co., Inc.
Westinghouse Electric Corp.
Whirlpool Corp.

RoseTech Alumni Association

The RoseTech Alumni Association headed by Fred Bogardus '32, has done an excellent job in serving the Institute throughout the past year. Committee Chairmen Larry Myers, '61, Homecoming; Chuck Huppert '65, Student Recruitment; Vern Fellows '62, RoseTech Clubs; Dick Mullins '40, Awards and Recognition; Dick Brown '59, Continuing Education, and Tom Reese '58, Senior orientation have manned their positions with untiring activity.

The officers of the twenty-four active RoseTech Clubs throughout the nation have redoubled efforts for increased participation and this past year every club met at least once, some as many as three or four times.

Other Constituency Groups

Rose-Hulman has been fortunate to have maintained throughout the years a close relationship with its parents and the Terre Haute business community.

This past year the Parents Association, under the leadership of Robert Kelm and Arnold Price, the Board of Associates chaired by John Hunter and the Development Council chaired by Pat O'Leary have been of invaluable assistance in their promotion and support of the Institute.

Public Relations

The role of public relations and information services is to expand the reputation of Rose-Hulman and to keep the constituency informed on the current operation of the Institute.

Press releases concerning general news, students activities, sports and special events are circulated to newspapers in the midwest continuously throughout the year. Special stories are slated for wire service use and national coverage. This past year more than 250 stories were prepared for release to various media.

The *Echoes* magazine is mailed to the total constituency four times per year with more than 6500 copies per mailing. It serves as the continual source of general information for all alumni, parents and friends of Rose-Hulman.

In addition several special publications such as the alumni directory, the academic catalog and admissions viewbook are prepared biannually and circulated to their particular interest groups.



In grateful appreciation to alumni and friends
the final phase of Rose-Hulman Institute of Tec

Presidential Award

Everett E. Black '11
Borg-Warner Foundation, Inc.
Joseph R. Cloutier
Benjamin G. Cox
Frederick M. Crapo '19
General Motors Corporation
Mr. & Mrs. Anton Hulman, Jr.
Lilly Endowment, Inc.
Marathon Oil Foundation
Herman A. Moench '29
Henry Y. Offutt '22
Estate of Robert T. Reinhardt
Terre Haute First National Bank

Centennial Investment - Alumni

Davis Levi - '13
George A. Maier - '16
Richard F. Bergmann - '18
Julian A. Vrydagh - '18
Walter L. Osmer - '20
George R. Armstrong - '21
William R. Dedert - '22
Joseph A. Engelhard - '22
Joseph W. Anstead - '23
Allen J. Weinhardt - '23
Samuel S. Forsythe - '24
Fred L. Bradford - '25
O. Wayne Motz - '25
G. Lee Berry - '28
Harold A. York - '28
George E. Hadley - '29
Abe Silverstein - '29
Morris T. Shattuck - '30
Anthony G. Blake - '31
Ernest G. Hurst - '31
Frederick J. Bogardus - '32

Hans M. F. Fischer - '32
C. Chester Stock - '32
Carlton B. Sexson - '33
Gene A. Zwerner - '34
John P. Giacometto - '35
Jay F. Hall - '35
Russell R. Kerr - '35
Paul C. Montgomery - '35
John E. Hartmann - '35
William E. Kasameyer - '36
Carl R. Wischmeyer - '37
Wendell E. Carroll - '38
Richard E. Dennis - '38
Adam H. Romeiser - '38
Robert S. Kahn - '39
Richard G. Weldele - '39
William H. Bradley - '40
Ross S. Pyle - '41
John G. Mehagan - '42
John T. Newlin - Feb. '43
Michael W. Percopo - Feb. '43
Donald E. Alexander - July '44

Paul A. Benning, Jr. - June '47
George A. Staub - June '47
John R. White - June '47
Edward T. Mabley - Dec. '47
Robert W. Wolf - Dec. '47
Howard P. Freers - Oct. '48
Alfred A. Yee - Oct. '48
George N. Blount - Jan. '49
R. Tim Kelley - April '49
Alfred R. Schmidt - Nov. '49
Richard L. Mace - Aug. '50
Carlyle H. Wokasien - '51
Warren W. Jones - '52
Clyde F. Willian - '52
William J. Toeppe - '53
Harold D. Brown, Jr. - '57
Fred W. Goetsch, Jr. - '57
Ronald G. Reeves - '58
William E. Kuchar - '59
Vern W. Fellows - '62
Edwin W. Jirousek - '66

ends who already have made an investment in
Technology's Centennial Development Program.

Second Century Citation

Alcoa Foundation
Edward Baur
Bethlehem Steel Corporation
E. E. Black Ltd.
Richard C. Brown '29
Ruel F. Burns Sr. '15
David M. Demaree '42
Carl E. Ehrenhardt '30
Robert B. Evans '06
Crawford F. Failey
Freitag-Weinhardt, Inc.
Frederick W. Garry '51
General Telephone of Indiana
Adam K. Grafe '25
Henry C. Gray '17
Gulf Oil Corporation
Shelton Hannig, Inc.

Marshall T. Hubbard
E. G. Hurst '31
Indiana State Bank
Indianapolis Power & Light
Company
Inland Steel-Ryerson
Foundation
Dr. John A. Logan
Lone Star Industries, Inc.
Merchants National Bank
of Terre Haute
George E. Miller
O. Wayne Motz '25
Pfizer, Inc.
Procter & Gamble Fund
Public Service Indiana

Thomas L. Reese '58
Ralph M. Ross
Paul H. Sawyers '32
Robert Shattuck '36
Forrest G. Sherer
Terre Haute Savings Bank
Tenneco Foundation
Robert L. Voges '47
John A. Wagner '18
Walker Electric Supply
Company
Allen Weinhardt '23
Western Electric Fund
Westinghouse Educational
Foundation
Weston Wabash Foundation
J. B. Wilson '27

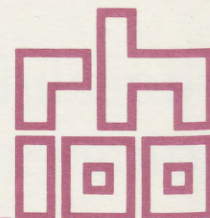
Centennial Investment - Friends

American Metal Climax Foundation
James D. Anderson
Thomas W. Binford
Bituminous-Materials Co., Inc.
Carroll H. Blanchar
Central Federal Savings & Loan
The Clowes Fund, Inc.
Herman Cole, Jr.
Cox, Zwerner, Gambill & Sullivan
Raymond E. Crandall
Dennis Trucking, Inc.
Ethyl Visqueen
Manuel Garcia
Hartmann Company, Inc.
Gertrude H. Hildreth
Sam C. Hite
Irvin P. Hooper

Hunter, Gillum & Hunter, Inc.
Hydro-Power, Inc.
Industrial Supply Co.
Dr. Clyde Jett
Estate of Alice H. Johnson
Richard W. Kelly
Estate of Anna Owen King
Oran M. Knudsen
Noel S. McBride
Mace Service, Inc.
Wilkison W. Meeks
Noel E. Moore
Newlin-Johnson Company
George Nichols
The Northern Trust Company
The Pillsbury Company Foundation
Pittsburgh DesMoines Steel Co.

Peter H. Priest
Mike Rendaci
RPI Interdormitory Council
Dr. Ralph K. Strong
Supreme Heating & Sheet
Metal Company
Terre Haute Tool &
Die Company
Terre Haute Water Works
Texas Instruments Foundation
Tri-Industries, Inc.
Miss Gladys M. Tilley
Wabash Valley Asphalt
Company, Inc.
Mr. & Mrs. Joe Walker
Maynard C. Wheeler
Robert T. Willets

...the second century of excellence



Joseph E. Adams (P.)	Mrs. E. E. Burwell	Dresser Foundation	Mrs. Diane L. Goering	Mr. & Mrs. Charles E. Kirkpatrick (P.)
Ronald W. Adams	Business Office Supplies	Mr. & Mrs. Thomas G. Duckworth	(P.)	Mr. & Mrs. John J. Klimaszewski (P.)
Allendale Mutual Insurance Company	Barbara J. Butts	Mr. & Mrs. William H. Duff	Gerald O. Griewahn	Melvin Kluester (P.)
Allen & Steen Acceptance Company	Mr. Frank Callahan	Elsie M. Dupin	Pauline Griffith	Walter R. Kyle
Dr. Wade Anshutz, Jr.	Mr. John Callahan	Mr. & Mrs. Clarence Duttlinger (P.)	Ted Grob, Jr.	Bert Lammey (P.)
Ross, H. Arnold	Mr. Joseph Callahan	Calvin R. Dyer	Adolf Guether (P.)	Robert E. Lash (P.)
Mr. & Mrs. Perry M. Arthur	CDI Incorporated	Martha Eachus	Frank A. Guthrie	Hannelore Lehr
Glen Baca	Bernard W. Carney	James R. Eifert	Pauline C. Gutsch	Pauline LeMay
Bank of Lexington	James H. Carr	Cpt. Alan G. Elfner	Mr. & Ms. Gordon Haist	Mr. & Mrs. Ralph L. Leonard (P.)
Mr. & Mrs. Raymond Barcus P.	Kenneth R. Carr	Ross Elliott, Inc.	Richard J. Hall (P.)	Margaret M. Leusing
Henry W. Barnette	Jerry A. Caskey	Mr. & Mrs. Richard Engleman (P.)	David G. Hansen	Dennis A. Lewis
Ruthanne Bastian	Mrs. T. K. Caughey	Ernst & Ernst	Louis W. Harmening	Graydon W. Ley
William J. Beam	Donald C. Chiang	ESB Foundation	Wm. J. Hayden	Cecil T. Lobo
Mr. & Mrs. J. Alex Becker	E. W. Clehouse	Dr. E. Phil Farmer	Ruth Held	Charles E. Loehmann
Benjamin S. Benjaminov	Mary Collier	Elizabeth R. & George C. Fasnacht (P.)	James Hicks	Dorothy S.P. Loo (P.)
Mr. & Mrs. Clarence Bennett (P.)	Mr. & Mrs. Harry C. Conn (P.)	Mary A. Fell	Hi-Fidelity, Inc.	Arthur A. Lorenz (P.)
Robert E. Bergman	Construction Engineering Services	Ruth E. Fell	Thomas R. Hightower	Jess R. Lucas
Mark M. Berrio	The Cook Foundation, Inc.	Maudie E. Flaherty	R. Dean Hill	Mr. & Mrs. Bob G. Lukens (P.)
James H. Black, Jr.	Mrs. C. H. Cortelyon	Albert Lee Fleschner	Dirk J. Hofsommer	Louisville Bridge & Iron Company
Mr. & Mrs. Joseph L. Block	Maurice J. Costello	Frances Fletcher	Charles G. Howard	Mr. & Mrs. Donald H. McCullough (P.)
John L. Bloxsome	Betty Coy	Jeannette Ford	Katherine Hudson	Mrs. Ernestine McClain
Blue Key	John J. Coy	Emerson Foulke	Melvin W. Hunter	Mary Jo McCullough
Winoa Branam	James W. Cristee	Mr. & Mrs. M. Neil Franklin (P.)	Teruo Ishihara	Mary Lou McCullough
Branam-Williams Realtors	Seth Critchley	Cathy Gambill	Luther G. Johnson (P.)	Mrs. Don McDaniel
Walter E. Brashear	Mr. & Mrs. Dale Curry (P.)	Marie Gambill	Edward D. Jones & Company	Alan M. McGee
Robert J. Brenton	Robert D. Curry	Manuel Garcia (P.)	Mrs. Juliette Jones	Joseph O. McGrew
Mr. & Mrs. Kenneth J. Brewer	Charles W. Curtis (P.)	Gibson Coal Company	Kenneth C. Jones	Thomas G. McRae
Bricklayers, Masons, & Tilersetters	F. D. Daily	J. Darrell Gibson	Mr. & Mrs. Leland M. Jones (P.)	Dr. Leander A. Malone (P.)
Bettie L. Brooks	Bruce R. Danner	Margaret Gillaspay	Mr. & Mrs. Wm. R. Kelley	Jerome L. Martin
William F. Brown	Shilda DeMongin	Robert L. Gilmore	Mr. & Mrs. Robert H. Kelm (P.)	C. L. Mason
Ruel F. Burns, Jr. (P.)	Dix, Patrick, Radcliff & Adamson	Mr. & Mrs. Robert Goble (P.)	Robert Keyt	Thomas W. Mason
	Mrs. Wayne Doyal			
	Mr. & Mrs. Frank Dreher (P.)			

Charles A. Mathes
 Mary Kay Matson
 Douglas F. Mattick
 Dr. Don Mattox
 Mary Sue May
 Tom S. Merritt
 Mr. & Mrs. Roscoe Mickey
 (P.)
 Stanley T. Mickel
 Midwest Office Supplies,
 Inc.
 Mr. & Mrs. Ladeslay J. Miel
 (P.)
 Steven R. Miller
 Mr. & Mrs. Frank L. Mlinar
 (P.)
 Michael J. Moloney
 Donald G. Morin
 Margaret Morris
 Mr. & Mrs. Louis J.
 Moseson (P.)
 Duncan C. Murdoch
 Evelyn V. Muston
 John T. Mutchner
 Thomas Myrick
 Terri D. Newby
 Mr. & Mrs. Wm. S. Noblitt
 (P.)
 Robert G. Nunn
 Philip O'Daniel
 Otilio Panaranto
 Peter F. Parshall
 Mr. & Mrs. Fred Pasternak
 (P.)
 Mr. & Mrs. Forrest Pell (P.)
 L. H. Petzold
 Paul G. Phillips
 Wm. B. Pickett
 David L. Piker
 Valentine Pischl (P.)
 Ponderosa Steak House
 Mr. & Mrs. Walter J.
 Primus (P.)
 Orval Purcell
 Robert C. Randall (P.)
 George R. Ranes
 Mrs. H. L. Raymond (P.)
 John W. Rhee
 Senour B. Ritchie
 William E. Ritter
 Mr. & Mrs. Richard D.
 Rivers
 Ted M. Robinson
 John R. Rogers Company
 Alan T. Roper
 Rose-Hulman Student
 Government Assn.
 Raymond Ross
 David R. Roy
 John N. Royle
 Fred P. Ruby
 Fred Russell
 Lois Z. Rutledge
 Mr. & Mrs. Robert T. Ryan
 (P.)
 Mr. & Mrs. Clifford Sands
 (P.)
 Mr. & Mrs. James F. Scahill
 (P.)
 Mr. & Mrs. Paul Schmidt
 (P.)
 Dr. E. P. Scott
 Gary J. Sherman
 William L. Shriner
 Mr. & Mrs. William F.
 Sibrel (P.)
 Gerald Simpson
 William W. Simpson
 Mr. & Mrs. Robert E. Sin-
 clair (P.)
 William W. Sisson
 Chester Skalmowski
 Mildred H. Smith
 Mrs. Nathan D. Smith (P.)
 Thad D. Shith
 Velma Smith
 Donna L. Snedeker
 Festus I. Soribie
 Mr. & Mrs. Wilbur E. Spear
 (P.)
 Marjory E. Stafford
 Dr. & Mrs. D.E. Stephens
 (P.)
 Superior Loan Company
 Mr. & Mrs. Frederick W.
 Targett
 Kenneth E. Taylor
 James L. Teegarden
 Phillip H. Templeton
 Terre Haute Engraving
 Dorothy R. Tipton (P.)
 Carolyn L. Toops
 Mr. & Mrs. Victor Torasso
 (P.)
 Joseph F. Touchton
 Anna Mary Turner
 Charles Uhl
 James VanLaningham (P.)
 Anna Van Vactor
 Clair W. Vernie (P.)
 Jerome F. Wagner
 Betty J. Walker
 Mr. & Mrs. Wayne Wall (P.)
 John T. Walkins
 Mrs. Carl Weihl (P.)
 E. J. Whalen
 Mr. & Mrs. Horace L.
 Wiggins
 Mrs. Mary Wilkerson (P.)
 Myrl O. Wilkinson
 Charles A. Williams
 George A. Williams (P.)
 James W. Wilson
 Mrs. Harry L. Willson
 Robert K. Winter (P.)
 Henry J. Winton
 Clarence A. Withrow (P.)
 Harold Wood
 Mr. & Mrs. Neil Wylde
 (P.)
 John T. Ying

CAMPAIGN ORGANIZATION

Honorary Chairman

Anton Hulman, Jr.

General Chairman

Gene A. Zwerner '34

Terre Haute Division

Sterling H. Pittman '22
 Alumni

John B. Hunter '38
 Friends

Paul A. Benning June '47
 Business and Industry

Family Division

Herman A. Moench '29
 Faculty and Staff

John T. Newlin Feb '43
 Advanced Gifts

Henry Y. Offutt '22
 Board of Managers

William T. Randall '73
 Students

National Division

Thomas L. Reese '58

Primary Areas

Clyde F. Willian '52
 Chicago

John C. Pirtle '52
 Cincinnati-Dayton

John W. Gregory '55
 Cleveland

Howard P. Freers Oct. '48
 Detroit

Robert S. Coma '59
 Indianapolis

R. Tim Kelley Apr '49
 Los Angeles

Fred Wright '62
 Louisville

Wendell E. Carroll '38
 New York

William R. Gray Aug. 50
 Northern Indiana

Robert E. Burtner '57
 Philadelphia

G. Lee Berry '28
 Pittsburgh

Charles J. Schukai '57
 St. Louis

John C. Gaughan '58
 Washington, D. C.

George O. Howson '32
 San Francisco

Satellite Areas

Ronald G. Gessell '66
 Atlanta

William C. Perkins '60
 Bloomington

Joseph L. Bronnert '59
 Columbus, Ind.

William T. Weinhardt Feb. '43
 Dallas

Fred E. Mueller Mar. '48
 Danville

Evan H. Johnson '65
 Decatur

James E. Dunn '65
 Denver

James W. Stott '58
 Evansville

Everett E. Black '11
 Honolulu

Jack L. Foltz '57
 Houston

Walter R. McIndoo '56
 Kokomo

Jerome E. Hahn '62
 Peoria

John D. Anthony '31
 Sarasota

Jack K. Matthews July '49
 Phoenix

52% of Alumni Participate In '73-'74 Giving Programs

During the 1973-74 fiscal year which ended August 31, slightly over 52 percent of the alumni of Rose-Hulman Institute of Technology contributed either to the final phase of the Centennial Development Program or the Annual Alumni Fund--a modern day record of giving for the alumni of the school.

On the following pages we proudly list the names of alumni who gave so generously during this period. Special thanks are due John C. Fenoglio '59 and the Class Agents for their work in promoting annual support through the Alumni Fund and to Gene A. Zwerner '34, Thomas L. Reese '58 and the many alumni who continue to lead the volunteer effort of the final phase of the Centennial Capital Campaign.

Alumni giving is listed by class, with pledges and gifts to the Centennial Campaign denoted by an asterisk.

'03	'07	'10
Class Agent: C. BRENTON COOK Contributors -- 1 Percentage -- 100.00 Alumni of Record -- 1	Class Agent: CARL G. PLANCK Contributors -- 3 Percentage -- 60.00 Alumni of Record -- 4	Class Agent: CARL G. PLANCK Contributors -- 2 Percentage -- 66.67 Alumni of Record -- 3
H. Edmund Wiedemann	Harold S. Austin Delbert Kay D-C. C. Sharpenburg	Nathan A. Bowers *Carl G. Planck
'05	'08	'11
Class Agent: C. BRENTON COOK Contributors -- 4 Percentage -- 100.00 Alumni of Record -- 4	Class Agent: CARL G. PLANCK Contributors -- 1 Percentage -- 100.00 Alumni of Record -- 1	Class Agent: CARL G. PLANCK Contributors -- 4 Percentage -- 57.14 Alumni of Record -- 7
*Donald H. Atherton C. Brenton Cook George H. Pfeif *Dudley D. Wright D-John S. McBride Memorial Fund	Ottiwell Wood	William E. Baker *Everett E. Black W. Lindsay Clore Herbert C. Offutt Wilbur B. Shook Memorial Fund
'06	'09	'12
Class Agent: CARL G. PLANCK Contributors -- 2 Percentage -- 66.67 Alumni of Record -- 3	Class Agent: CARL G. PLANCK Contributors -- 4 Percentage -- 57.14 Alumni of Record -- 7	Class Agent: JERRY H. SERVICE Contributors -- 5 Percentage -- 62.50 Alumni of Record -- 8
*John R. Curry *Robert B. Evans	Glenn M. Curry H. Wayne Curry Harry B. Hammond George B. Voges	Richard Fishback *Jerry H. Service

HONOR CLASSES

Class	%
'03.....	100.00
'05.....	100.00
'08.....	100.00
'22.....	100.00
'18.....	95.24
'20.....	89.47
'25.....	88.46
'21.....	88.24
'24.....	86.96
'19.....	84.62
'17.....	77.78
'40.....	75.86
'13.....	75.00
Jn'47.....	75.00
'59.....	71.23
'23.....	70.83
'34.....	69.23
'35.....	68.75
'06.....	66.67
'10.....	66.67
'29.....	66.67
'31.....	66.67
Jl'44.....	66.67
Fb'50.....	66.67
'32.....	63.04
'58.....	62.82
'12.....	62.50
'39.....	62.50
Ja'49.....	61.90
Fb'43.....	61.70
'15.....	61.54
'07.....	60.00
'54.....	60.00

*James E. Spindle
 *Harry C. Uhl
 Henry L. Yingling

'13

Class Agent:
 RICHARD D. MADISON
Contributors -- 6
Percentage -- 75.00
Alumni of Record -- 8

Smith N. Crowe
 *Maurice R. Denny
 Earl E. Hughes
 *Davis Levi
 L. W. Lewis
 Richard D. Madison

'14

Class Agent:
 J. BURCH TYGART
Contributors -- 4
Percentage -- 50.00
Alumni of Record -- 7

*George M. Derr
 Kenneth E. Lancet
 D-Chester E. Moore
 J. Burch Tygart

'15

Class Agent:
 EDWARD J. HEGARTY
Contributors -- 8
Percentage -- 61.54
Alumni of Record -- 13

*Ruel F. Burns Sr.
 *Thomas E. Drake
 *Samuel M. Fink
 *Lawrence D. Gwinn
 *Edward J. Hegarty
 Herman E. Mayrose
 Ernest B. Plott
 Warren F. Turner

'16

Class Agent:
 ROBERT A. WEINHARDT
Contributors -- 6
Percentage -- 50.00
Alumni of Record -- 12

Joseph H. Carter
 F. Carr Goldsmith
 *George M. Maier
 *Allen D. Merrill
 F. Caspar Wagner
 *Robert A. Weinhardt

'17

Class Agent:
 THOMAS M. EVANS
Contributors -- 7
Percentage -- 77.78
Alumni of Record -- 9

Elmer O. Austermillier
 Thomas M. Evans
 *Edgar N. Goldstine
 *Henry C. Gray
 *Harry W. Knox
 Wayne K. Self
 James L. Weeks

'18

Class Agent:
 CHAUNCEY S. MCKEE
Contributors -- 20
Percentage -- 95.24
Alumni of Record -- 21

Leroy Allen
 *Richard F. Bergmann
 *Erlund B. Cornell
 *Paul B. Curtis
 Lix Da Cunha
 *C. Ray Decker
 *Charles K. Failing
 *Chester W. Falls
 Carl E. Geiger
 Harry J. Harbulak
 *George B. Henry
 Daniel M. Howard
 *Chauncey S. McKee
 *John W. Mikels
 James E. Orr
 *Julian A. Vrydagh
 *John A. Wagner
 James A. Wildermuth
 Elmer F. Williams
 *Andrew Yatsko

'19

Class Agent:
 SIMON WERBNER
Contributors -- 11
Percentage -- 84.62
Alumni of Record -- 13

Benjamin F. Anthony
 *Frederick M. Crapo
 *DeWitt P. Cromwell
 *Arthur L. Ervin
 *Richard P. Gillum
 *Herschel A. Hearn
 Alexander P. King
 *Aaron W. Richardson
 *Lester S. Stinson
 *Hal B. Tyler
 *Simon Werbner

'20

Class Agent:
 HERBERT BRIGGS, JR.
Contributors -- 17
Percentage -- 89.47
Alumni of Record -- 19

Herbert Biggs, Jr.
 T. Andrew Brophy
 *George L. Brown
 *William C. Bryan
 Jerome D. Farmer
 M. G. Flesher
 Paul J. Grafe
 *Herman J. Lauterbach
 Donald C. Maxwell
 William H. Meadows
 *Whitcomb W. Moore
 *Walter L. Osmer
 Fred M. Pence
 Gen. C. Frank Schilt
 Stuart C. Stimson
 *Arthur P. Woolfolk
 Clift W. Young

'21

Class Agent:
 ROBERT E. SEWELL
Contributors -- 15
Percentage -- 88.2
Alumni of Record -- 17

*George R. Armstrong
 Ray L. Biller
 *William H. Bruning
 *Edwin H. Carnarius
 D-Jesse E. Downen
 Joseph T. Ferrell
 *Hubert T. Goodman
 *Lloyd Greenebaum
 Edward F. Jaenisch
 *William H. Junker
 *Sidney Reibel
 *Edward R. Ronald
 *Carl W. Schroeder
 *Robert E. Sewell
 *Irvin R. Weir

'22

Class Agent:
 WILLIAM R. DEDERT
Contributors -- 24
Percentage 100.00
Alumni of Record -- 24

*Harold D. Brown
 Owen E. Conover
 W. Ernest Danner
 Kenneth L. Deblois
 *William R. Dedert
 Hal H. Dronberger
 *Albert D. Dunlap

*Joseph A. Engelhard
 *Robert P. Failing
 Harry S. Fitzsimmons
 D-Kearney E. Harmas
 Robert L. Henderson
 Ernest O. Hunt
 Herman L. Mitchell
 *Henry Y. Offutt
 *Sterling H. Pittmann
 Hubert E. Reed
 *D. Lester Reinhard
 Ernest C. Scott
 *Malcolm C. Scott
 Eubert F. Taggart
 Eugene S. Whitlock
 Willis E. Williams
 *Carl B. Wilson

'23

Class Agent:
 ALLEN J. WEINHARDT
Contributors -- 17
Percentage -- 70.83
Alumni of Record -- 24

*Joseph W. Anstead
 Ralph B. Bennett
 *Eugene C. Brown
 *Baptist Buffo
 *James B. Connelly
 *Kenneth E. Cook
 Charles E. Daniels
 Clyde R. Ellis
 *Arthur Griepenstroh
 Richard W. Hager
 *Herman H. Heck
 *John J. McCormick
 Clyde G. Raeber
 J. Russell Snyder
 *Fred B. Tetzl
 *Allen J. Weinhardt
 Albert E. Woollen

'24

Class Agent:
 CLAY P. WATSON
Contributors -- 20
Percentage -- 86.96
Alumni of Record -- 23

C. M. Barnhart
 *Franklin F. Bogardus
 G. Raymond Fitterer
 *Samuel S. Forsythe
 *Charles G. Haupt
 *Harold B. Hood
 *William F. Lisman
 L. Francis McCullough
 *Leon S. Maehling
 Clarence H. Marlar
 *F. Ray Martin
 Robert A. Reddie

*Fred Schroeder
 *Carson W. Simms
 Maxwell J. Skeeters
 *John T. Stone
 William H. Waltman
 *Clay P. Watson
 Floyd E. Watson
 *Edgar A. Wilson

'25

Class Agent:
 JOSEPH H. REIFENBERG
Contributors -- 23
Percentage -- 88.46
Alumni of Record -- 26

Clarence A. Anderson
 *Zachary X. Bennett
 *Roger H. Bolin
 *Fred L. Bradford
 *Richard P. Brettell
 Carl E. Dahlquist
 Orville M. Dunning
 Raymond V. Fischer
 Lester W. Glenn
 *Adam K. Grafe
 *Lincoln E. Griffith
 *Herbert Gruesing
 *W. Roscoe McIntosh
 Frederick L. Matteson
 Hubert H. Merrill
 *John W. Moorhead
 *O. Wayne Motz
 Howard L. Newton
 *Joseph H. Reifenberg
 *E. F. Rickelman
 *Edwin Thompson
 Joe White
 Theron A. Yager

'26

Class Agent:
 RALPH W. TAPY
Contributors -- 12
Percentage 57.14
Alumni of Record -- 21

*C. W. Ellis
 *Edward F. Kelley
 James E. Letsinger
 *Theodore S. Moench
 Ernest P. Pifer
 *Victor E. Schlossberg
 *J. Nelson Shepherd
 Ralph W. Tapy
 *E. Wayne Watkins
 John S. Wells
 *Daniel R. Werner
 *Baldwin G. Witty

'27

Class Agent:

LOWELL E. MUEHLER

Contributors -- 14

Percentage -- 56.00

Alumni of Record -- 25

*Richard C. Brown

*Earl W. Cunningham

Ralph T. Davy

John A. Fairhurst

Charles H. Hunnell

Lowell E. Muehler

Fred E. Nicoson

Arthur F. Reinking

*Colonel A. Swalls

Fred L. Trautman

C. S. Trigg

Robert E. Wade

Baird F. West

*J. B. Wilson

'28

Class Agent:

HAROLD A. YORK

Contributors -- 22

Percentage -- 59.46

Alumni of Record -- 37

*Alexander Babillis

*G. Lee Berry

Claude C. Cash

Arthur F. Drompp

James E. Goddard

John T. Harvey

William P. Leake

Guy S. Mahan

*Virgil E. Martin

*George J. Mason

*John I. Mendenhall

*J. Leonard Montgomery

*Andrew J. Nehf

*James F. Payne

Roy D. Reece

*Thomas M. Reed

Raymond Schauwecker

Carl E. Siegelin

*Robert F. Taggart

*Benjamin H. VanVactor

*Wendell A. Watkins

*Harold A. York

'29

Class Agent:

HENRY T. NANCREDE

Contributors -- 18

Percentage -- 66.7

Alumni of Record -- 26

*Fred O. Andrews

D-Ralph C. Bailey

*Albert E. Baker

*Granville P. Brosman

John C. Cooley, Sr.

*John A. Derry

A. Wayne Dicks

Robert H. Downen

*Kermit H. Glazner

*George E. Hadley

*Raymond P. Harris

Volney A. Hutchinson

Herschel E. Hylton

*Herman A. Moench

*Henry T. Nancrede

*Carl W. Scharf

*Abe Silverstein

*David L. Thompson

'30

Class Agent:

JOHN W. ROCKWOOD

Contributors -- 15

Percentage -- 51.72

Alumni of Record -- 29

Eldridge E. Allen

William L. Collins

James H. Corp

Andrew H. Davy

*Carl E. Ehrenhardt

*Charles A. Lotze

*Clyde S. Marsh

*Claude R. Nicholson

John J. O'Mara

Maurice L. Piker

John W. Rockwood

Glenn J. Sampson

*Eugene H. Scofield

*Morris T. Shattuck

Gilbert L. Shew

'31

Class Agent:

ROBERT T. MEES

Contributors -- 18

Percentage -- 66.67

Alumni of Record -- 27

*John D. Anthony

*John K. Barr

*Anthony G. Blake

Samuel B. Dibble, Jr.

*Albert Ellis

*K. Richard Garmong

*Ernest G. Hurst

Richard W. Johnson

*Paul E. Kunz

*Harry J. Loving

Kenneth Mason

*Robert T. Mees

*Lowell L. Ray

*John F. Richardson

Frank J. Sabla

*Frederick W. Scott

*Allen G. Stimson

Charles E. White

'32

Class Agent:

PAUL H. SAWYERS

Contributors -- 29

Percentage -- 63.04

Alumni of Record -- 46

*Frederick J. Bogardus

*Frank P. Butler

Myron J. Clark

*Robert M. Clark

Wayne R. Dickerson

*Robert J. D. Finfrock

*Hans M. F. Fischer

A. H. Goodman

George T. Hauer

William H. Hineline

*Charles E. Howard

*George O. Howson

*Norman Hunt

Joseph L. Hunter

Lee C. Kelsey, Jr.

*Carl W. Kraemer

Charles N. McGillivray

*Bryan G. MacNabb

*Robert D. Moench

*John H. Montgomery

George W. Naanes

*John V. Niemi

Paul J. Ogden

Fred O. Reed

*Paul H. Sawyers

Russell V. Smith

*C. Chester Stock

*John E. Tonetti

*Robert A. Wilson

'33

Class Agent:

J. D. McNAIR

Contributors -- 24

Percentage -- 58.54

Alumni of Record -- 41

William E. Bachelor

*Robert L. Barr

James W. Cantwell

*William F. Crawford

John C. Dalrymple

*Paul R. Dierdorf

Wm. J. Fitzsimmons

*Donald H. Greenfield

James F. Guymon

*Wm. C. Heidenreich

*Edward H. Hilgeman

*Herbert W. Hylton

Harry Larman

*G. T. Lautenschlager

*J. Dunlap McNair

Kyle M. Miller

*William Paton

John M. Phelps

Homer M. Phillips

Arthur O. Reinking

*Dan Ringo

*Carlton B. Sexson

James C. Skinner

*Edwin J. Withers

'34

Class Agent:

GENE A. ZWERNER

Contributors -- 27

Percentage -- 69.23

Alumni of Record -- 39

*Russell E. Archer, Sr.

Howard C. Barnes

William A. Belstrom

*Willis S. Biggs

Noble C. Blair, Jr.

*Stephen P. Cauley

*Henry H. Douglas

*Henry Fick, Jr.

*Brent C. Jacob, Jr.

*Harlan C. Johnson

*F. J. Landenberger

Ernest C. Leitzman

Herbert A. McAninch

Harry L. McGurk

Frank Mansur

*James I. Mason

*J. Richard Mattlingly

John A. Moore

A. J. Newsom

John A. Ritter

George F. Stark

H. Loren Thompson

*Richard K. Toner

*Ronald W. Updike

Norman E. Watson

W. Whitney Yost

*Gene A. Zwerner

Charter train for Evansville football game in 1930.



'35

Class Agent:
JOHN P. GIACOLETTO
Contributors -- 33
Percentage -- 68.75
Alumni of Record -- 48

Albert L. Bard
Robert T. Bernd
John A. Bradley
Gordon L. Burt
Deforest W. Colburn
*Claude C. Dierdorf
*William C. Eyke
*John P. Giacometto
*Jay F. Hall
*John E. Hartmann
*Louis W. Heck
*Arthur W. Hess
*Russell R. Kerr
*Louis S. Lyon
*Albert V. McEowen
*Karl L. Mason
*John F. Mayrose
*Paul C. Montgomery
*Meritt F. Myers
*Carl Nelson
William S. Pratt
*Carl W. Price, Jr.
*Harold Reintjes
*Francis H. Richardson
*Harry H. Richardson
*Robert W. Self
Virgil E. Shaw
Wayne G. Siegelin
P. Byrne Terhorst
Norman Tucker
*Joseph B. Weaver
*Ernest J. Welsh
John H. Welsh

'36

Class Agent:
ROBERT SHATTUCK
Contributors -- 17
Percentage -- 53.13
Alumni of Record -- 32

Paul D. Bennett
James W. Campbell
William R. Creal
*Louis Duenweg
Raymond J. Harrod
James D. Hufford
*William E. Kasameyer
Charles E. McDonald
Paul H. McKee
*John W. Mann
*Carroll R. Merriman
*Richard C. Metz
*E. Kendrick Newton, Jr.
Warren S. Sentman

Fall, 1974

*Robert Shattuck
Samuel A. Tait
*Arthur Wood

'37

Class Agent:
ALBERT W. LOTZE, JR.
Contributors -- 11
Percentage -- 57.89
Alumni of Record -- 19

*John W. Fox
Harry J. Halberstadt
William R. Huff
Albert W. Lotze, Jr.
*Donald E. McCullough
J. Robert Penisten
*Robert I. Sears
Walter R. Snedeker
*John B. Stineman
*Carl R. Wischmeyer
*Edward J. Wodicka, Jr.

'38

Class Agent:
WILLIAM SERBAN
Contributors -- 16
Percentage -- 50.00
Alumni of Record -- 32

*Wayne E. Alexander
*Wendell E. Carroll
*Richard E. Dennis
*Joseph A. Dillahunt
Robert W. Dispennett
*Edward H. Eckerman
*Lawrence Giacometto
*John R. Hayes
*John B. Hunter
*Clemens W. Lundgren
*Ora E. Myers, Jr.
*George A. Neyhouse
*Adam H. Romeiser
*William A. Serban
John E. Whitesell
*Claude J. Zinngrabe

'39

Class Agent:
JOHN W. YAW
Contributors -- 15
Percentage -- 62.50
Alumni of Record -- 24

*Richard D. Alterkruse
*Robert J. Burger
Edward A. Coons
*Frank Doenges
*Robert S. Kahn
*Francis A. Marasco

*A. Tom Merrill
*Victor W. Peterson
John R. Pies
*Joseph E. Ross
*Edward O. Spahr
Morris S. Stout
*Robert W. Underwood
*Richard G. Weldele
John W. Yaw

'40

Class Agent:
EARL O. SWICKARD
Contributors -- 22
Percentage -- 75.86
Alumni of Record -- 29

*William H. Bradley
Maurice W. Cannon
*James E. Ducey
*Maurice C. Fleming
John A. Hart
Milton M. Hosack
*Maurice W. Johns
Avery C. Kelsall
John F. Kowinski
Lloyd O. Krause
Willard V. Louthen
*Robert P. McKee
*C. D. Montgomery
Richard A. Mullins
Frank G. Pearce
John W. Quinn
Robert M. Ripple
Nicholas A. Smilanic
Earl O. Swickard, Jr.
J. Edward Taylor
*Vernon E. Whitehouse
*Allen T. Wilson

'41

Class Agent:
WILLIAM J. ANDERSON
Contributors -- 20
Percentage -- 52.63
Alumni of Record -- 38

*William J. Anderson
*Maj. Gen. John G. Appel
*Eldred W. Beckman
*H. Rolland Buell
Linn D. Burk
*John L. Combs
*Joseph W. Dreher
*Ivan C. Frankes, Jr.
*Simon P. Gary
*George C. Harper, Jr.
*C. Roger Howle
*Albert L. Klatte
Edward J. Klecka
Carlton L. McWilliams
*Ross S. Pyle
*William R. Ringo
*John R. Roberts

*George R. Schull
James E. Shake
Robert A. Young

'42

Class Agent:
JOHN G. MEHAGAN
Contributors -- 26
Percentage -- 55.3
Alumni of Record -- 46

John J. Brehany
*James A. Brown
Martin J. Cavanaugh
Ray K. Chalfant
*Elmer D. Cooper
*David M. Demaree
Marion B. Foley
Harold B. Frist
*Eugene Hess
*Irvin H. Keeler
*Jack K. Kennedy
*George H. Kesler
Robert S. King
*Gene F. McConnell
*Hulit L. Madinger
*John G. Mehagan
Charles S. Meurer
Frederick Nahm, Jr.
Lucien Nelson
D-Clay P. Riley
Robert W. Rockwood
*Benjamin K. Sollars
*Arlie J. Ullrich
John H. Vanderveer
*Dwayne L. Woolsey
William E. Worley

February, '43

Class Agent:
PAUL E. PRICE
Contributors -- 29
Percentage -- 61.70
Alumni of Record -- 47

Fred G. Berghoefer
George D. Blakey
Ralph E. Brown
Gene A. Coltrin
*Darrell E. Criss
*Paul H. Guhl
*Frederick J. Hill
Robert W. Hodgers, Jr.
*Charles E. Huggins
Howard H. Irvin
William J. Kahn
Alan W. Ker
*Jack L. Loser
James S. March
*John E. Metz
*Carl N. Miller, Jr.
Richard C. Mott
*John T. Newlin

*Robert R. Pease
*Michael W. Percopo
*William G. Prescott
*Paul E. Price
*Harmon Rose
*William F. Rumbley
Charles T. Thomas
*William W. Turner
*Richard Van Kempema
*William T. Weinhardt
John W. Welsh

October, '43

Class Agent:
WILLIAM R. KNIPTASH
Contributors -- 22
Percentage -- 55.00
Alumni of Record -- 40

Kenneth R. Allison
Lloyd A. Buchalter
*Robert P. Davis
*Robert K. Drake
George A. Edwards
Richard D. Ellsworth
Harry D. Frye
James R. Garrett
*Dwight P. Heath
*W. David Helmick, Jr.
*William R. Knipdash
*Raymond I. Kopan
*Donald T. Lo
*Charles R. McKinney
*Edward Moeller, Jr.
*J. Francis Pfrank
Bruce E. Powell
James H. Shultz
E. Harold Stanfield
*John A. Valente
Joseph M. Valentine
*Frank H. Winters

July, '44

Class Agent:
RICHARD C.
MILHOLLAND
Contributors -- 14
Percentage -- 66.67
Alumni of Record -- 21

*Donald E. Alexander
*George R. Butwin
Robert H. Dinkel
*Charles R. Fox
*Frank W. Guthrie
*James H. Hanes
Arlis J. Hief
*Paul Kaplan
Jay Kress
Robert G. Larkin
*Warren C. Letsinger
*Richard C. Milholland
Leroy S. Miller
*B. Vonderschmitt

December, '44

Class Agent:

RICHARD C.
MILHOLLAND

Contributors -- 2

Percentage -- 25.00

Alumni of Record -- 8

E. James Hegarty

Robert W. Stallman

'45

Class Agent:

W. C. WALDBIESER

Contributors -- 5

Percentage -- 41.67

Alumni of Record -- 12

*Herbert R. Bailey

William G. Dedert

*Stephen W. Liddle

*Fred C. Maienschein

*William C. Waldbieser

'46

Class Agent:

WARREN F. HAVERKAMP

Contributors -- 9

Percentage -- 45.00

Alumni of Record -- 20

Robert G. Bannister

*Kenneth W. Barker

Theodore Blickwedel

Edgar R. Carpenter

Frank Jones

Robert T. Kylander

Philip B. Loring

*Harmon L. Shaw

Robert D. Strum

March '47

Class Agent:

RALPH A. MITCHELL

Contributors -- 5

Percentage -- 33.33

Alumni of Record -- 15

Carl M. Carlson

Robert W. Dunham

*Willis E. Rose

*Keith A. Sutton

*Charles G. Weibel

June '47

Class Agent:

RALPH A. MITCHELL

Contributors -- 21

Percentage -- 75.00

Alumni of Record -- 28

Charles L. Babb

Charles J. Bashe

*Paul A. Benning, Jr.

*Jean R. Boatman

*C. Phillip Bowne

Clyde E. Cook

*Francis M. Drury

Lyndon E. Eberly, Jr.

Richard C. Elstner

Robert W. Flack

John F. King

*John W. Krampe

Ralph A. Mitchell

*Richard G. Olson

*George A. Staub

John C. Stewart

Anthony P. Tucciarone

*R. Donald Tyler

*Robert L. Voges

*James M. Wade

*John R. White

September '47

Class Agent:

THOMAS DUWELIUS

Contributors -- 4

Percentage -- 36.36

Alumni of Record -- 11

*Emerson N. Bentley

*William G. Cornell

*Thomas A. Duwelius

*John F. Kramer

December '47

Class Agent:

THOMAS DUWELIUS

Contributors -- 25

Percentage -- 55.56

Alumni of Record -- 45

George W. Brand

*William R. Buechler

*James F. Clarke

Russell C. Cox

William D. Fowle

*Francis A. Heinz, Jr.

*Bernard C. Hoilman

*James C. Hoskinson

*Dale O. Jeffers

*Herbert Katz

*Alfred M. Lawson

*John E. Loomis

*Edward T. Mabley

Robert A. Miller

*John W. Murdock

*John W. Price

*Allen P. Smith

*Lowell L. Smith

*Wallace L. Steuerwald

Robert E. Supp

*Richard H. Swartz

Edwin H. C. Tao

*J. Prewitt Wehle

*William G. White

*Robert W. Wolf

March '48

Class Agent:

GEORGE T. WOLF

Contributors -- 8

Percentage -- 47.06

Alumni of Record -- 17

Joseph L. Bisch

*Thomas W. Cundiff

*George Kyle

*James C. Mitten

*Frederick E. Mueller

*Joseph T. Neill

George T. Wolf

*William K. Sharpe

June '48

Class Agent:

GEORGE T. WOLF

Contributors -- 2

Percentage -- 40.00

Alumni of Record -- 5

Kenneth P. Fessenden

*Frederick M. Lundgren

October '48

Class Agent:

DAVID C. MITCHELL

Contributors -- 25

Percentage -- 52.08

Alumni of Record -- 48

Leonard R. Albers

*John P. Avery

*William E. Backes

*John A. Bartholome

William G. Blount

*John W. Bryant

*Richard P. Burandt

*Robert J. Cooney

Hal C. Cultice

Albert Edwards

*Charles V. Eshelman

*Howard P. Freers

*Karl V. Hauser

*Milton J. Lowenstein

Francis X. McDonald

*David C. Mitchell

*John M. Mitchell

*William Monzel

January '49

Class Agent:

BERNARD E. ERICKSON

Contributors -- 39

Percentage -- 61.9

Alumni of Record -- 63

*Otto C. Andres

Kenneth R. Arney

*George N. Blount

*Harold J. Born

*James H. Bowman

*C. Lowe Bush

*Jesse W. Cook

Harry Craig, Jr.

Robert E. Devlin

*Frank W. Dorfmeier

Frank F. Eberhardt

*Jack J. Ellis

*Bernard E. Erickson

Robert M. Erskine

Victor H. Forsythe, Jr.

C. E. Hart

*C. Gordon Hayes

Paul C. Hill, Jr.

Richard E. Hoggatt

*Ogdon A. Kiefer

*Carl F. Leshner

*Wayne E. McCoy

*Fujio Matsuda

Frederick C. Mikels

*Gerald C. Miller

*Tetsuichi Mitsuda

David M. Mullen

Leroy A. Peterson

*Ben A. Richardson

Joseph B. Ross

Folkert A. Schmidt

Frederick F. Sherry

Leonard H. Silverman

*Robert C. Somers

Allen S. Stewart

John V. Titsworth

*John H. Todd

Paul E. Wible, Jr.

*James L. Worick

April '49

Class Agent:

JOHN A. HUMBLE

Contributors -- 28

Percentage -- 49.12

Alumni of Record -- 57

Norman F. Bell

*Charles E. Bethge

Charles W. Birt

Edward C. Bockhold

Eugene B. Boward

Donald A. Boyd

Norman W. Brenton

Robert E. Campbell

*Eugene E. Ervin

James H. Groves

Robert J. Grusis

*James F. Haring

Joseph P. Hart

*John A. Humble

*Roland T. Kelley

*John G. Martis

Ignac W. Matus

Edward M. Meagher

Leroy W. Mitchell

*Ben Ranada

*Robert L. Royer

Michael G. Schaefer

William A. Schumann

*S. Don Shimazu

*George H. Stearley

*John Wargo, Jr.

John M. Weibel

Norman R. Weller

July '49

Class Agent:

LOUIS F. KELLEY

Contributors -- 26

Percentage -- 54.2

Alumni of Record -- 48

*Robert M. Baugh

*Joseph V. Bonucchi

*Robert G. Cassidy

Donald R. Coughanowr

Cyrus W. Cox

Max Duggins

Robert U. Grant

*C. Nelson Havill

*Lowell E. Huffman

Thomas G. Jones

*Louis F. Kelley

James P. Laughlin

*C. Gene McGlone

*Jack K. Matthews

Malcolm R. Meurer

*Harold Monroney

Joseph Osman

*Harry W. Plew

James L. Rogers

*Max M. Scott

*Kenneth R. Sheetz

*Fred K. Staats

*Gerald R. Stambaugh

*Albert N. Strickland

George Wrabel

Lester W. Wright

November '49

Class Agent:

JOHN D. WINTERS

Contributors -- 23

Percentage -- 46.9

Alumni of Record -- 48

James A. Arney
 *Fred W. Burdett
 Cecil E. Cook
 Robert W. Exline
 *Paul Gottfried
 *Fred J. Gradous, Jr.
 *Carl R. Hildebrand
 Orren Hillman
 Gilbert J. Hilt
 Robert P. Hutchinson
 *Donald L. Moore
 *Herbert L. Patterson
 G. J. Rathinasamy
 *Alfred R. Schmidt
 Wm. E. Schneeberger
 *James W. Schwier
 Robert W. Schwier
 *James G. Simms
 *Robert S. Smith
 A. Donald Stolzy
 Wayne F. Walter
 *John D. Winters
 Robert F. Woody

February '50

Class Agent:

CHARLES C. OLMSTED

Contributors -- 6

Percentage -- 66.67

Alumni of Record -- 9

*William H. Alsman
 *Ralph F. Connor
 Joseph D. Power
 *Lawrence E. Stevens
 *John W. Waite
 Pierce J. Walinsky

August '50

Class Agent:

CHARLES C. OLMSTED

Contributors -- 33

Percentage -- 55.93

Alumni of Record -- 59

*Robert R. Atherton
 Robert G. Cassidy
 *M. Gene Clingerman
 *William R. Gray
 Andrew R. Hallden
 *Ray C. Haller
 *Denzil L. Hammond
 *Robert A. Haswell
 *B. D. Ingle

Fall, 1974

*Alfred L. Johnson
 Edgar L. Johnson
 *Allan T. Junker
 *Ralph S. Killion
 *Richard J. Kuehl
 *Ronald A. Lange
 *Wayne L. Loving
 *Richard L. Mace
 *Frank M. Mardjetko
 *Norman R. Meyer
 *Jodean Morrow
 Robert K. Morse
 *Everett C. Moseman
 *Joseph D. Mummert
 Charles C. Olmsted
 Harold F. Osterhoudt
 Donald C. Owens
 Bill G. Pittman
 Kenneth W. Reed
 James E. Robinson
 *Harold E. Skelley
 *Donald O. Springman
 *Charles B. Strickland
 *Raymond D. Summerlot

May '50

Class Agent:

CHARLES C. OLMSTED

Contributors -- 1

Percentage -- 33.33

Alumni of Record -- 3

Hugh M. Hanna

'51

Class Agent:

ROBERT G. GREMINGER

Contributors -- 18

Percentage -- 31.0

Alumni of Record -- 58

Raymond Baker, Jr.
 Alex M. Balu
 Floyd C. Butel, Jr.
 Frederick W. Garry
 *Robert G. Greminger
 Wm. E. Kallansrude
 *Alan L. Keal
 D-Francis L. McCormick
 *William R. McKeen
 *Robert L. Powell
 Bruno A. Rembish
 Guy H. Revesz
 *Robert G. Rinker
 *Wayne E. Seegers
 Harold F. Spence
 *Seibert D. Thomas
 *Richard E. Woehrle
 *Carlyle H. Wokasien



The Franklin bust incident

'52

Class Agent:

CLYDE F. WILLIAN

Contributors -- 35

Percentage -- 50.72

Alumni of Record -- 69

Earl W. Albin
 Charles O. Barbre
 Philip E. Bracht
 *Ronald L. Brunner
 Robert L. Davis
 Richard L. Englum
 *Robert P. Failing, Jr.
 *Allen Forsaith
 *Philip C. Gardner
 Morris L. Griffiths
 *Thomas U. Grinslade
 Harry R. Harrison
 *Donald J. Heath
 *Norman Hessler
 *Harry H. Johnson
 *Robert E. Johnson
 *Warren W. Jones
 *Robert F. Kriz
 Larry F. Leonard
 Robert L. Metz
 Robert C. Miller
 Robert L. Miller
 *Roy A. Moody
 Raymond H. Naras
 *John C. Pirtle
 *L. Duane Pyle
 Chris A. Scharpenberg
 *Von Roger Shanks
 *Allan W. Stiles
 *George Tuttle, Jr.
 Robert J. Waldbieser
 G. Richard Walls
 *Glenn R. Webster
 *Clyde F. Willian
 Edward S. Wyatt

'53

Class Agent:

DAVID H. BADGER

Contributors -- 26

Percentage -- 50.00

Alumni of Record -- 52

*David H. Badger
 *Vernon L. Bischopink
 Henry A. Bosch, Jr.
 *Alfred D. Bosley, Jr.
 Robert C. Bosshardt
 *James F. Burgett
 William C. Chambers
 *Robert R. Dedert
 *J. Eugene Foley
 Herbert L. Gatewood
 Richard F. Grubaugh
 James E. Ingle
 Robert K. Kawano
 *William H. Kuykendall
 William W. Luce
 Gerald L. Moore
 *Richard A. Myhre
 W. Donald Nelson
 *Howard K. Pedigo
 Robert W. Ray
 *Thomas P. Reifenberg
 John R. Rinker
 *John N. Simpson
 *William J. Toeppe
 *John E. Voelker
 Joseph L. Vrydagh

'54

Class Agent:

OWEN H. MEHARG

Contributors -- 21

Percentage -- 60.0

Alumni of Record -- 35

*Frederick L. Corban
 J. Donald Easton
 *Hubert W. Evinger
 Donald W. Fyfe
 *W. Rex Hauser
 *Derald E. Heady
 Ernest L. Hillman
 *Chas. W. Hirschfield
 Rex D. Leonard
 *James B. Matthews
 *Owen H. Meharg
 *Robert D. Miller
 *Carl M. North
 Lawrence L. Ogborn
 *John W. Sawyers
 *James L. Schwartz
 John D. Scott
 *Ronald E. Smith
 *Robert Steinhauser
 Erwin A. Ulbrich, Jr.
 *Edgar S. Utterback, Jr.

'55

Class Agent:

JAMES H. SHERMAN

Contributors -- 26

Percentage -- 49.06

Alumni of Record -- 53

William D. Boring
 *Robert L. Dahnke
 *Allen J. Furlan
 *Richard J. Gordon
 *John W. Gregory
 *David W. Hackett
 *Beuford C. Hall, Jr.
 *Samuel W. Hart
 *Phillip G. Hermeling
 Jack R. Hughes
 *Phillip B. Kirk
 Samuel J. Kowal

Lincoln M. Lai
Robert J. Lebrock
*James L. Lott
James E. McCulloch
*Gerald H. McGlone
*Merritt G. Marbach
*Robert E. Mogle
*Donald J. Powers
Frank L. Rendaci
*George R. Runyan
*James H. Sherman
William E. Supp
James E. Tatooles
Joe A. Williams

'56

Class Agent:
WALTER F. JOHANNINGSMEIER
Contributors -- 32
Percentage -- 46.38
Alumni of Record -- 69

John H. Bradshaw
Drysdale F. Brannon
Dr. Stanley Carpenter
*John S. Chinn
*Myron J. Clark, Jr.
Charles E. Cooper
Larry P. Dickson
*Jack L. Dodson
*Franklin P. Eppert
William S. Gaither
*W. F. Johanningsmeier
Philip S. Jones
*L. Birt Kellam
Joseph H. Leppert
Ralph D. Lockhart
*Walter R. McIndoo
*Owen B. March
*Paul R. Mason
Alfred Merelli
*Francis H. Potts
Francis Przybylski
*John R. Rhodehamel
*Nathan Ritchie
*Walter A. Schramm
*John C. Scott
*P. Carter Smith

*Arthur W. Sutton, Jr.
*Charles D. Tolson
*Ronald W. Vahle
S. Terrell Vanover
Clyde R. Withem
*Robert N. Young

'57

Class Agent:
HAROLD D. BROWN, JR.
Contributors -- 42
Percentage -- 51.85
Alumni of Record -- 81

*John A. Biral
John L. Bloxsome
*Robert E. Bright
*Harold D. Brown, Jr.
*Robert E. Burtner
*James E. Calabro
*Donald D. Carrell
Howard L. Chambers
*John H. Derry
*Jimmie K. Dyer
*David C. Flock
*Jack L. Foltz
*James S. Freers
*Fred W. Goetsch, Jr.
Harvey A. Greene
James L. Griffith
*Paul R. Harder
Velmar E. Howard
Henry E. Jackel, Jr.
*Charles W. Kallis
Floyd A. Koontz
Robert M. Letsinger
Paul H. Lewis
*Jerry R. Marlow
James L. Martin
*Ronald R. Meredith
*David J. Moeller
*Richard A. Newgent
*James T. Pebworth
Gerald C. Rose
*Frederick Sauerteig
*Charles J. Schukai

*Paul K. Sharp
*Lowell D. Simpson
*William R. Small
Robert J. Stearley
David A. Thomas
*Byron B. Veir
William W. White, Jr.
Jack A. Wilcox
*Donald G. Woehler
Timothy B. Zimmerman

'58

Class Agent:
E. C. KNOY
Contributors -- 49
Percentage -- 62.8
Alumni of Record -- 78

*Cecil R. Ambuehl
*Myer Berman
*Joseph E. Blastic
*Ernest W. Boordt
*A. Thomas Clark, Jr.
*L. M. 'Mick' Cole
Ernest R. Davidson
*Kenneth L. Denny
*Frank R. Denton, Jr.
Kenneth P. Duncan
*George E. Eck
P. Toby Eubank
*John C. Gaughan
Gary H. Giffel
Norman C. Grimshaw
*Richard K. Irey
Joseph E. Jackse
John H. Kassebaum
Charles F. Kleptz
*E. Crone Knoy
Richard J. Kremer
*Frank L. Larr, Jr.
*Gary L. Leavitt
William D. McKee
Thomas R. McPherron
*James L. Massey
*Gerry A. Mattern
*Glen A. Miles
*Frank P. Molinaro
*Robert E. Newby
Jack R. Niemi
*James C. Oakes

*William J. Paton
William H. Payne
Richard Potzler
Thomas J. Reed
*Thomas L. Reese
*Ronald G. Reeves
*Charles E. Skidmore
Wilbur J. Steele
George R. Stockelman
*James W. Stott
*Richard N. Streacker
*Robert G. Sutton
Richard L. Trueb
*Donald R. Weidner
William W. Weil
*Lyman A. Whalen
John R. Williams

'59

Class Agent:
J. C. FENOGLIO
Contributors -- 52
Percentage -- 71.23
Alumni of Record -- 73

S. Eugene Amick
*David R. Bailey
*William R. Bock
*Warren W. Bowden
*Joseph L. Bronnert
Barlow W. Brooks, Jr.
*Richard L. Brown
*William Campbell
*Robert S. Coma
John R. Davis
*Robert A. Dinning
Donald J. Duck
Marlin G. Eaton
John W. Fagg
*Harold D. Fassburg
*John C. Fenoglio
*Raymond H. Gompf
*Hugh A. Griffin
Larry E. Grimes
Thomas E. Hale
*Robert W. Hall
*Charles E. Hamilton
*David R. Hendricks
*Carl T. Herakovich
W. K. Hollingsworth
*Robert G. Jackson
*John W. Jardine
*Donald H. Johnson
John S. Kennedy
*William E. Kuchar
*Lawrence J. Logue
Robert E. Manning
Robert A. Mewhinney
James L. Mills
Chas. A. Mitsdarffer
Dan G. Mook
*Clarence L. Munro
*Jimmie E. Neal

H. James O'Donnell, Jr.
*Berndt L. Olson
*Flavian Reising, Jr.
James E. Richardson
*Jerry V. Schmits
Donald F. Slack
Richard D. Smith
Jan R. Sonner
David W. Spoonamore
John W. Stearley
Joseph C. Vendel
Gary R. Wetmore
*Robert A. White
Larry Wilson

'60

Class Agent:
C. THEODORE JAENKE
Contributors -- 35
Percentage -- 54.69
Alumni of Record -- 64

*James E. Baker
*Leonard Bennett
*R. Larry Berger
*Henry E. Bradley
*Laurence M. Brady
Dean R. Brown
*Robert A. Crisp
*Franklin E. Fisher
*Gerald L. Gaskins
*Eduard L. Goheen
*Barton L. Gronberg
*Robert J. Honegger
*Ronald J. Hubers
Noble F. Huff
*Norman I. Huntley
*C. Theodore Jaenke
*Edmund W. James
*Ronald R. Jennings
*Jerry M. Johnson
William B. Johnson
*A. Ross Kuykendall
Daniel P. LaGatta
Donald J. Mislivec
*James R. Montgomery
Donald W. Moyer, Sr.
*William C. Perkins
*Gary W. Phipps
William H. Schaper
*Robert J. Schukai
Charles R. Sechrest
*Elwood P. Stroupe
James M. Tubby
*Joel R. Waldbieser
*Gerald D. Waltz
*John R. Whitworth

'61

Class Agent:
JACK E. SCHREINER
Contributors -- 40
Percentage -- 56.34
Alumni of Record -- 71

Echoes





Results of senior cord day

*Robert P. Amos
 *Phillips Ballantyne
 James A. Beck
 *John U. Bott
 *David E. Burns
 Stephen Dee Burton
 L. Richard Carter
 *William A. Carter, Jr.
 *Wilbur T. Decker
 *Don L. Dekker
 *William R. Fenoglio
 *Robert E. Franzwa
 *Marshall D. Garino
 *Herbert J. Gladden
 James W. Godwin, Jr.
 *Warren K. Griffith
 Vernon R. Gross
 *Jerry D. Heiniger
 *Donald S. Herrin
 *Ronald Higginbotham
 Meador T. Hill, Jr.
 Thomas J. Hormuth
 Ronald J. Ireland
 *Alan H. Johnson
 *Edward J. Kostra
 Donald R. Lanning
 *Robert D. Michael
 Carl B. Muhlbachler
 *Larry W. Myers
 *Charles F. Piper
 *Larry L. Pitt
 John R. Ray
 Jack E. Schreiner
 *Charles W. Smith
 William M. Steele
 *David A. Trueb
 *Robert H. Turecky
 *John V. White
 William H. Yochum, Jr.
 *William O. Young

'62

Class Agent:
 BRENT E. ROBERTSON
Contributors -- 36
Percentage -- 57.1
Alumni of Record -- 43

*Jerry D. Badger
 Stephen D. Ban
 Lee R. Brda
 William R. Brown
 *L. Robert Carter
 *Morris L. Cleverley
 Ross W. Dring
 *Vern W. Fellows
 *Carl B. Garmong
 *Major Jerry L. Gregg
 *Jerome E. Hahn
 *John W. Haley
 *Ned P. Hannum
 *Roderick K. Herrick
 Andrew P. Hrezo
 Ronald L. Johnson
 *Ronald L. Klinect
 Richard Landenberger
 *Charles C. McCoy
 *James T. Malone
 *Clyde R. Metz
 *Dale F. Oexmann
 *John L. Reed
 Brent E. Robertson
 Don L. Robinson
 J. Richard Schafer
 Joseph W. Snyder
 Michael D. Sprague
 W. David Starnes
 *Robert B. Stevens
 *Alfred L. Story
 James W. Summers

Donald C. Todd
 *John W. Walden
 Ralph J. Wardle
 *Frederick Wright

'63

Class Agent:
 WILLIAM B. NICEWANGER
Contributors -- 42
Percentage -- 56.8
Alumni of Record -- 74

*Larry A. Anderson
 *Edward B. Baker
 *Marvin E. Barks
 Edward J. Blahut II
 *Gregory Bolt
 *Thomas W. Bosworth
 Thomas B. Brown
 Philip A. Chute
 *Jay P. Conniff
 *Billy Crynes
 *Ronald L. Danilowicz
 *Charles C. DeWeese
 *David A. Dumford
 *Delmar H. Ellis
 Richard B. Esker
 *Max E. Goodwin
 *Michael H. Hayes
 *R. Neil Irwin
 *W. Allen Jannasch, Jr.
 Dennis Karwatka
 Nicholas J. Kira III
 Louis L. LaFlamme
 *L. Bernard Landsbaum
 Raymond J. Lepp
 *Jeffrey J. Lew
 Robert D. Lovell
 *Max W. Lunsford
 *Larry J. Marshall
 *Kenneth H. Miller
 *William B. Nicewanger
 *Jerry T. Nickerson
 Gerald K. Oxley
 *William D. Randolph
 *Richard C. Rapson, Jr.
 Gary M. Reynolds
 *Merle D. Rice
 Paul F. Richardson
 *Victor L. Risch
 *Paul E. Sabla
 *Darrol Spurgeon
 *Robert H. Steder
 Gary G. Valbert

'64

Class Agent:
 STEPHEN J. HOFFMAN
Contributors -- 43
Percentage -- 53.09
Alumni of Record -- 81

*M. Alan Bechtel
 *Steven L. Charlton

*Larry G. Clemons
 Robert N. Coltharp
 *Jack D. Cox
 Robert I. Dice
 *Edward K. Downey
 *Bryce D. Drake
 *Mars J. Gralia II
 *Larry E. Hall
 Stephen E. Hoffman
 George T. Holmes
 *Richard H. Jensen
 Curtis R. Jones
 *Bruce M. Kopf
 William L. Kovacs
 *Dennis L. Lawson
 Robert E. Leonard
 *Vaughn R. Love
 Jimmy L. Lunsford
 Robert W. McCoige
 *Robert A. McKnight
 Dennis W. Moore
 Larry G. Morgan
 Robert L. Murray
 *Alfred J. Ratz
 *John A. Rohr
 E. Lindley Ruddick
 *James W. Schulz
 *Charles P. Spencer
 John Stewart
 *John F. Stineman
 John Stockton
 *William K. Teeguarden
 *Harry W. Templin
 *Charles T. Terry
 *Michael D. Thomas
 Joseph E. Thurston
 *Robert E. Valle
 James D. Watkins
 E. Allen Wright
 *John Zdenek
 *Gerald F. Zinngrabe

'65

Class Agent:
 RAY V. FRISCHKORN
Contributors -- 40
Percentage -- 40.82
Alumni of Record -- 98

*James S. Abel
 *Robert C. Allen III
 Howard G. Alm
 Michael I. Atkins
 *William L. Bergstrand
 *Robert C. Blahut
 *John W. Boyer
 Peter B. Canalia
 B. Wm. Dudley
 James E. Dunn
 *William E. Everson
 James H. Fearday
 *Terrence L. Fenimore
 James W. Francis
 Michael A. Francis

*Ray V. Frischkorn
 *Elmer A. Guerri
 Stanley W. Henson
 *Willard R. Holland, Jr.
 *Charles B. Huppert
 *Melvin A. Izumi
 Richard T. King
 *John A. Kuhn
 *Frederick N. McKee
 Alfred J. Mayle
 Donald D. Miller
 *David H. Nancrede
 *James R. Overdorf
 *Robert C. Priddy
 *Benedict R. Radecki
 *David Y. Rice, Jr.
 *Norman G. Schuld
 Paul J. Schweri
 Richard D. Swan
 Andrew D. Szilagyi
 Ronald F. Turaski, Jr.
 Stephen P. Watson
 Glendon G. Williams
 *Curtis Yee
 Thomas T. Yoshida

'66

Class Agent:
 SCOTT SKJORDAHL
Contributors -- 57
Percentage -- 47.9
Alumni of Record -- 119

Jeffrey A. Barton
 Elmer L. Beard, Jr.
 *Dennis C. Berry
 *William M. Bess
 James R. Bohler
 Phillip L. Carter
 *Steven P. Collier
 Stephen Daugherty
 Thomas Daugherty
 *John R. Delbaue
 *Robert E. Evans
 Richard G. Foltz
 *Gary L. Funk
 Dwight S. Garbe
 *Warren C. Gaskill
 *Ronald G. Gesell
 Daniel J. Goodwin
 *Larry D. Halstead
 John P. Howlett
 *James T. Hunt
 *Edwin W. Jirousek
 R. Jeffrey Keeler
 *John L. Klausman
 *Chas. F. Kuester
 Jeffery I. Lackey
 *Michael S. Lancet
 James W. Lane, Jr.
 *James G. Larsen
 *Danny W. Lenz
 William R. Lewis
 *Donald E. Lundgren

John F. Lynn
 *Larry I. Michael
 Robert E. Miller
 Darrell L. Millner
 *James W. Moyer
 Thomas H. Nehmzow
 John R. Norris
 Edward J. Nowacki, Jr.
 *John M. Puschaver
 *Steven W. Reiss
 *Kenneth E. Rich
 Robert W. Rose
 Larry A. Sachs
 *Gregory J. Samoluk
 *Robert K. Sandberg
 *Donald F. Schultz
 Terry Schultz
 Thomas R. Sprouse
 *Thomas W. Takacs
 *Peter G. Taylor
 *Larry E. Thomas
 *James A. Underwood
 Gary L. Van Deman
 *Alan H. Welton
 *Thomas M. Wilhoite
 *G. Mont Williams

'67

Class Agent:
 DALE EUGENE HELMS
Contributors -- 44
Percentage -- 44.90
Alumni of Record -- 98

*George W. Allen, Jr.
 *Richard H. Blessing
 Charles R. Boswell
 *Patrick H. Cahill
 *J. Bryan Carter
 *Thomas R. Curry
 Harold J. Curtis
 Darrell E. Deeds
 James W. Engle
 *Philip R. Fassnacht
 Donald A. Gunder
 Graham R. Hacker
 Paul S. Hannah
 Dale E. Helms
 Roger T. Hybeck
 J. William Kane
 *John W. Katsbeck, Jr.
 *James W. Kerber
 Kenneth C. Kuntz
 *Richard T. Laubach
 James A. Mitchell
 James M. Mondabaugh
 James B. Morehouse
 *Charles P. Morgan
 Roger A. Nelson
 Paul E. Newton
 Larry C. Oldham
 *Edward H. Onouye
 Richard K. Osburn
 *Lee A. Peters

*Charles E. Risch
 *David P. Rodabaugh
 Eugene E. Rood
 *Rudy G. Sanders
 *William O. Sibrel
 Carl E. Smith
 *Ronald L. Stoneburner
 Thomas D. Stuebe
 *James M. Tageson
 *Raymond N. Virotko
 Charles E. Webb
 *Gordon P. West
 *Bert O. Williams, Jr.
 James W. Zimmerman, Jr.

'68

Class Agents:
 STEVEN W. WODICKA
 (A-L)
 JOSEPH A. WELLINGS
 (M-Z)

Contributors -- 59
Percentage -- 36.6
Alumni of Record -- 161

*Gary Adler
 Stephen D. Ahlbrand
 *Karl W. Beeson
 *Dennis L. Beltz
 Richard Bennett
 *Ricardo A. Bloch
 *Benny J. Bradburn
 *John J. Burke
 *Stephen G. Carroll
 Tom Compton
 Kenneth A. Culp
 Mark A. Dietzen
 *Gerald R. Dinkel
 William A. Dodge
 *Randall E. Drew
 *James R. Duzan
 *John A. Elzufon
 *Harry S. Epply
 Dennis D. Fritz
 *Robert D. Gravitt
 David L. Hagedorn
 David Harshbarger
 Rolf Hill
 Peter M. Hodapp
 Alan F. Hoskin
 Shu Yeh Howe
 Robert H. Janes
 *David A. Jonas
 William F. Knnannlein
 David Larr
 Thomas L. McLeish
 *Michael H. Mefford
 Gary E. Mitchell
 *Stephen E. Mitchell
 *Thomas H. Morris
 Stephen P. Mueller
 Bryon L. Myers
 Steven W. Myers

Michael E. Nicksic
 *Joseph O'Brien
 *Lawrence O'Hair
 *James M. Pettee
 *William H. Plenge
 *Joel D. Roberts
 Heinz H. Ropers
 Kenneth Sands
 *Harold L. Schroer
 *James A. Scott
 John L. Shambach
 *David J. Skolnik
 *Nelson C. Smiley
 *Hal C. Smith
 John T. Snow
 *Robert L. Vogenthaler
 *Craig H. Weerts
 Joseph A. Wellings
 Stephen Whitesell
 F. Cecil Witherbee
 *Steven W. Wodicka

'69

Class Agents:
 JOHN A. JACOBI (A-L)
 JAMES L. TUCKER, JR.
 (M-Z)

Contributors -- 80
Percentage -- 40.8
Alumni of Record -- 196

John R. Albertine
 John R. Allen
 *John T. Anderson
 Thomas Lee Bader
 Morris K. Belknap
 Michael A. Blackburn
 *Alan H. Boner
 *Paul D. Broughton
 Davis Chin
 *John W. Cook
 Robert M. Crampton
 *Hugh R. Crome
 Peter K. Doenges
 *Michael E. Douglas
 Robert A. Englehart
 *Roger C. Evans
 *Peter R. Fowler
 *Dale F. Good
 *Gary L. Grebe
 John P. Greve, Jr.
 *Michael P. Haley
 James A. Hartman
 Robert J. Hillis
 Stephen M. Hillman
 David Hoecker
 David Lee Hohlfield
 George L. Holland
 *Dane A. Horna
 *James J. Houdeshell
 James Hull
 *Jose Ibanez
 Alvin R. Isenberg
 *Michael T. Jackson

*John A. Jacobi
 Ernest Jay Kletz
 *Robert J. Kraus
 *Charles M. Kruse
 Frederick L. Kuonen
 John E. Leonard
 Clifford W. Lewis
 Frank I. Lindsey
 Richard N. Lindstrom
 *Lawrence E. Lynn
 Gregory L. Michael
 *Michael L. Morris
 Terrance A. Muldoon
 Richard E. Nelson
 Edward A. Neu III
 *John S. Newlin
 Larry D. Olson
 David L. Patton
 *Charles E. Petersen
 *John A. Piper
 James J. Poehling
 John J. Quinlan
 *Larry W. Rennels
 *Stephen A. Ricks
 *Monte D. Riggs
 *David A. Ripple
 *Douglas W. Roof
 *Rainer Ropers
 *Larry K. Rust
 *William D. Schindel
 Thomas G. Schultz
 *David K. Shewmaker
 Melvin A. Smith
 *Robert W. Smith
 Stephen R. Smith
 *John A. Spear
 *Mark T. Stewart
 *Thomas E. Szabo
 *Jerald M. Tarble
 *Tom Thuerbach
 *James J. Tomlinson
 *David K. Trueblood
 James L. Tucker
 William J. Volz, Jr.
 *John A. Walter
 James W. Wong
 Curt M. Yelnick

'70

Class Agents:
 GARY N. KIRSCHKE
 (A-L)
 JOHN B. HODSDEN
 (M-Z)
Contributors -- 72
Percentage -- 37.9
Alumni of Record -- 190

Billie E. Art
 Dennis C. Banks
 *Robert L. Beecher II
 Richard Wm. Bieman
 *Charles M. Boesenberg
 *Joseph H. Born
 *Bruce A. Boyd

Noel Arthur Braun, Jr.
 Tim K. Bumgardner
 Richard C. Burrow
 *George Butkovich
 Donald J. Carroll
 *Doug W. Cartwright
 Robert L. Combs, Jr.
 Richard D. Conard
 J. Q. Delap, Jr.
 *William L. Duncan, Jr.
 *Daniel B. Ealy
 John R. Fish
 *Gary W. Gladish
 *Edwin G. Green
 Gary L. Groff
 Wm. Dan Gurley
 *Dan L. Harrison
 Robert H. Harrison
 Paul B. Headdy
 William M. Heeter
 *James R. Hightower
 Mike Hilkey
 *John B. Hodsden
 Timothy J. Hollack
 *Dan F. Jablonski
 *Michael A. Jerrell
 Ray J. Jirousek
 *Richard L. Killion
 *Clarence Kincaid
 Conrad P. Kinney
 Harold D. Kinney
 *Richard G. Kirkman
 Gary Norman Kirschke
 *Alvin D. Kluesing
 Terry McCommon
 *Foster A. McMasters
 *Arthur R. Martin
 *John E. Meng
 Robert C. Meyer
 *Jon G. Moehlmann
 *Gregory A. Montgomery
 *Michael A. Moroz
 Donald G. Morris
 *Richard W. Moulton
 Ron Nastav
 *John W. Phipps
 *George D. Pope
 *Marvin L. Raymond
 Robert Ries
 *Michael J. Ring
 *K. M. Sappenfield II
 *Robert A. Siner
 *Jeffrey Chas. Smirz
 *Russell F. Sparks
 *Sidney L. Stoffer
 *Fred E. Strietelmeier
 Charles E. Towne
 Gregory Alan Wall
 *Robert C. Waterman
 *Stephen R. Whitesell
 *John C. Wicks
 *John M. Wilkinson
 *Theodore M. Willer
 Bruce P. Williams
 John A. Yarish

Class Agents:

STEVEN C. GOBLE (A-L)
SHERLEY SAMPLE (M-Z)

Contributors -- 67

Percentage -- 41.9

Alumni of Record -- 160

Steven R. Ahlf
Kenton L. Anderson
Paul V. Archer
*Michael D. Ayers
*James R. Baker
*Nelson L. Baxter
*Buckley D. Beranek
*Arthur S. Bowers
*Steven L. Boyce
William L. Breyfogle
Thomas A. Butwin
*Joseph M. Cahill
*Howard W. Cundiff
*Larry E. Fagg
*Jerry K. Finley
James R. Forbes
*Randall L. Foulke
Winston P. Fowler
*Thomas M. Gland
*Leon R. Goble
*Steven C. Goble
Thomas F. Gruenholz
*Joseph A. Gustin
*William E. Hancock
Harry R. Harrison
Mark Hoff
Alan C. Hruby
*Charles T. Huntwork
*Peter Jank
James E. Jeffries
*David Charles Jordan
Charles A. Kibler
*Stephen J. Kinsell
John R. Kleinschmidt
*Dennis G. Kopcha
Edward Krome, Jr.
*Charles E. Luker
*Terry L. Luster
*Thomas E. Lytle
Richard L. McCammon
Allan K. Mahler
Mike C. Masteller
George R. Mells
Thomas A. Merrill
*John R. Noel
*Jack E. Parks
Danny O. Peelman
Wolfgang Pelz
Gary A. Potter
Keith D. Roberts
*Joseph D. Rodenbeck
*Joseph R. Rodriguez
*Sherley W. Sample
Jon Marlyn Satrom
Paul D. Scheibelhut
David J. Schramm
Robert Schroeder

*K. David Seabrook
*Gregory Shutske
*Kenneth L. Simpson
Charles L. Stein
*David J. Stopek
Thomas L. Wall
*Roger Ward
John P. Willen
Richard E. Williams
*Dana C. Winn

Class Agents:

ROBERT J. SCHACHT
(A-L)

DAVID WANNINGER
(M-Z)

Contributors -- 53

Percentage -- 33.3

Alumni of Record -- 159

Beldon J. Beasley
Stephen C. Boardman
*Willard L. Boward, Jr.
James E. Bratina, Jr.
Richie L. Brunnemer
*Richard M. Christman
*Thomas T. Dinkel
Dean M. Ford
*Frederick Franzwa
*James H. Graham
Robert G. Guzzo
Gary R. Hill
Michael L. Hoover
Edgar M. Jacobsen, Jr.
Don W. Johnson
J. Scott Josif
Pedro L. Kinner
Michael Knoll
*Richard C. Kosik
Michael Bert Lammey
*Glen Ray Lash
*Edward W. McCarthy
*Stanley Lee Mickel
Anthony Mlinar
*Daniel W. Moss
*Mark F. Murnan
*Terrence E. Nelson
*Kenneth C. Oberst
Mark T. Owens
*Craig G. Paden
Richard S. Pappa
Robert N. Pittman
Charles L. Rives
*Michael P. Rominger
Mark Douglas Rose
*Roger K. Ryan
Gary L. Sanders
Robert J. Schacht
Kent A. Schreiber
*Stephen W. Sedgwick
Jay E. Sensibaugh
Bruce L. Shipley
*Donald L. Sparks

Class Agents:

GARY E. DOUGAN (A-L)
WILLIAM J. RANDALL

(M-Z)

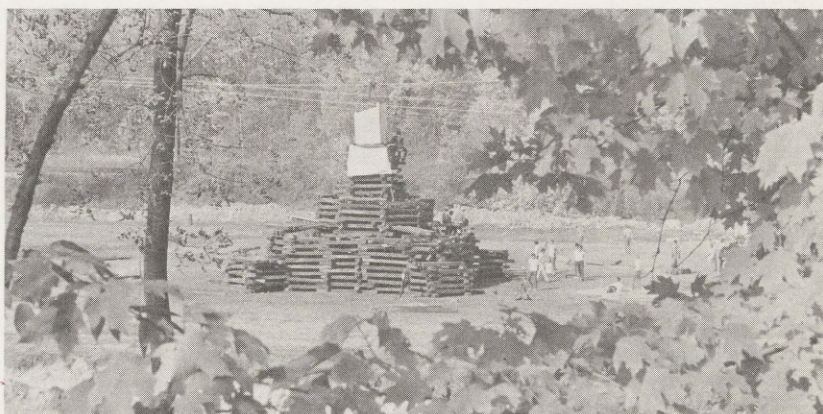
Contributors -- 125

Percentage 52.1

Alumni of Record -- 240

Joseph M. Adams
John R. Adomaitis
David M. Ambrose
*David M. Augenstein
*Steven R. Bell
*Mark E. Belisle
*David W. Bellows
*Michael D. Bennett
*Anthony J. Beyer
*Noble C. Blair III
*Michael D. Box
*Kenneth B. Brown, Jr.
*Joe A. Bubenzer
James J. J. Burger
*Steven J. Campbell
*Mark E. Cane
*Dallas G. Canfield
*Wayne R. Canfield
*Robert L. Connon
Steven R. Cook
*George E. Cooper
*Robert D. Curry
*Gary W. Delaplane
Gerald R. DeMeyer
David A. Dibble
James A. Dorsch
*Gary D. Dougan
Augie C. Drufke
Gary C. Elfring
*Richard B. Engelman
*Larry G. Erwin
*Robert A. Fleming
*Carl M. Fiessinger
*Richard A. Frushour
*Donald C. Graf
*David A. Greene
*Paul R. Grosskreutz
*Mark D. Gudorf
*Donald J. Hadley
*Douglas G. Haldeman
*Thomas F. Hans
*James D. Hastings
Gary L. Hedrick
William R. Heinrich
*Leslie L. Heiser
Paul W. T. Heller
*Barry M. Hendrix
*Richard W. Henthorn
*Arthur E. Hirsch
*Mark L. Hoecker
*Darwin G. Holle
*Robert J. Horton
*Ronald L. Huhn
*Charles S. Isenberg, Jr.
*Ernest R. Jones
*Donald A. Jones
*Robert C. Kaufmann
*Richard D. Keeven
*James P. Keith
*Gary R. Kelm
*Charles H. Kendrick
*Raymond A. Kominiares
*Lance C. Kuhnappfel
*Mark A. Lagomarcino
*Michael E. Lane
*John D. Latvaitis
*Kenneth A. Lee
*Arthur A. Lorenz
*Charles G. Manson
*Frederick P. Manuszak
Mark A. Marinko
*Donald L. Martin
Steven E. Marum
*Dennis M. Mehay
John G. Metz
Douglas W. Meyer

*Dean W. Miller
*Charles D. Moseman
Stephen J. Moseson
*Richard D. Moss
*Kevin C. Murphy
*Pierre C. Murray
*William C. Murray
Niles L. Noblitt
*Robert W. Nock
*Steven R. Olson
Steven K. Orr
*Joseph F. Pognant
*William J. Randall
*Kenneth E. Rasner
*Michael L. Reynolds
Ronald L. Richeson
Randall A. Robertson
David L. Scheidt
*Brett L. Schmidli
Thomas W. Schmidt
Paul C. Schmidtke
*Robert J. Schofield
*David L. Schrader
*Donald R. Schreiber
*William R. Schumann
*James C. Shearer
*Kenneth E. Shores
*Douglas K. Smith
Alan L. Smock
*Joseph H. Snyder
*Douglas L. Tanner
*William L. Thaler
*Johnnie T. Theriac
*Eugene Tonnetti, Jr.
Raymond J. Trimble
*Paul G. Troy
*Larry D. Wayland
*J. Michael Wey
*Cecil L. Whitaker
*Stephen R. White
*William G. White, Jr.
George A. Williams
*D. Craig Winn
*Ralph H. Winslow, Jr.
*David M. Wodicka
Stephen M. Woodard
*John T. Woods
*David H. Wordinger
*Joseph Zumar



SCHOLARSHIP AID

A number of companies, foundations and other groups and individuals make annual contributions restricted to student financial aid and scholarships. With nearly 80 percent of the student body qualifying for financial aid, the need for such gifts has never been greater or more appreciated.

American Baptist Board of Education & Publication
American Legion Amityville Post No. 1015
American Metal Climax Foundation, Inc.
American Society for Metals, Calumet Chapter
John W. Anderson Foundation
D. J. Angus-Scientech Educational Foundation
Richard W. Benbridge Scholarship Fund
Bowen Engineering Corp.
Mrs. Henry S. Broad
The Carmel Clay Educational Foundation
Central High School PTA
Central Illinois Public Service Company
Central Newspapers Foundation
Cincinnati Enquirer Foundation, Inc.
Emily O. Clemmons Trust
Olive B. Cole Foundation, Inc.
Community Scholarship Fund
Cooper Industries Foundation
Cummins Engine Foundation
East Noble Classroom Teachers Association
Equitable of Iowa
Elks National Foundation
B.P.O. Elks No. 86
B.P.O. Elks No. 190
B.P.O. Elks No. 365
Ford Motor Company
Friends Educational Fund for Negroes
General Motors Corporation
Hercules, Inc.
Miss Gertrude Hildreth
G. M. Hillenbrand Scholarship Fund
Illinois Elks Association
Indiana Elks Charities, Inc.
Indiana Highway Constructors
Indianapolis Newspapers, Inc.
Inland Steel-Ryerson Foundation, Inc.
International Association of Machinists & Aerospace Workers
Junior Achievement of Central Indiana
Kappa Kappa Kappa, Inc.
Mrs. Wayne T. Kehoe
James S. Kemper Foundation
LASPAU, Inc.
LaPorte High School
Magnavox Foundation, Inc.
Marathon Oil Foundation, Inc.
Edward Arthur Mellinger Educational Foundation, Inc.
Meridian Mutual Foundation, Inc.
NSC Foundation, Inc.
Nucor Corporation
Optimist Club of Connersville
The Pittsburgh Foundation
Princeton Rotary Club
Public Service Indiana
Rapid-American Corporation
Ridgewood High School Association
Society of Professional Engineers
South Bend Tribune
South Charleston Community Scholarship Fund
Oliver W. Storer Scholarship Foundation
J. H. Townsend Scholarship Trust
Union Baptist Church Scholarship Fund
United Steel Workers of America
Western Electric Fund
Wherrett Memorial Fund
Mrs. R. N. Wright
Mrs. R. N. Wright
Wyoming City Schools



General Motors Scholars

MATCHING GIFTS

Abbott Laboratories Fund
Alcoa Foundation
Allis Chalmers Foundation, Inc.
American Can Company Foundation
A.M.F. Foundation
American Metal Climax Foundation
American Telephone & Telegraph Co., Long Lines Div.
Amoco Foundation
The Anaconda Company
Armstrong Cork Company
Associated Factory Mutual Insurance Companies
Atlantic Richfield Foundation
Bendix Corporation
Bristol-Myers Co.
Bunker-Ramo Foundation
Carrier Corporation Foundation, Inc.
Chrysler Corporation Fund
The Cleveland Electric Illuminating Fund
Columbia Gas Distribution Companies
Commercial Solvents Corporation
Connecticut Mutual Life
Consumer Power Company
Corning Glass Works Foundation
CPC International, Inc.
Cummins Engine Foundation
Diamond Shamrock Corporation
R. R. Donnelley & Sons Co.
The Dow Chemical Company
Equitable Life Insurance Society
E S B Foundation
Exxon Educational Foundation
The Firestone Tire & Rubber Company
FMC Foundation
Ford Motor Company
Foster-Wheeler Corporation
General Cable Fund
General Electric Foundation
General Telephone Company of Indiana
B. F. Goodrich Company
Gould Foundation
Grumman Aerospace Corp.
Gulf Oil Foundation
Halliburton Education Foundation, Inc.
Hartford Insurance Group
Hewlett Packard Company
Honeywell, Inc.
Hughes Aircraft Company
International Business Machine Corporation
International Telephone & Telegraph Corp.
Kimberly Clark Foundation, Inc.
McGraw-Hill, Inc.
Marathon Oil Foundation, Inc.
Minnesota Mining & Manufacturing Company
Mobil Foundation, Inc.
Motorola Foundation
National Cash Register Foundation
National Distillers & Chemical Corp.
NIBCO, Inc.
The N. L. Industries Foundation, Inc.
Olin Corporation Charitable Trust
Owens-Corning Fiberglas Corporation
Owens-Illinois
Panhandle-Eastern Pipe Line Company
Parker-Hannifin Foundation
Phillips Petroleum Company
P.P.G. Industries Foundation
Pure Carbon Company, Inc.
Ralston Purina Company
Rockwell International
Joseph E. Seagram & Sons, Inc.
Signode Foundation, Inc.
Sinclair Koppers
The Singer Company Foundation
Square D Foundation
Standard Oil Company of Ohio
Standard Oil (Indiana) Foundation
Sun Oil Company
Sybron Corporation
Textron, Inc.
Union Electric Company
Uniroyal Foundation
United Aircraft Corporation
Westinghouse Educational Foundation
Whirlpool Foundation

Echoes

Rose-Hulman is fortunate in having a strong sense of mission. There is unanimity among all those associated with the Institute that science and engineering are finally coming into their own, that they are essential for the future well-being of not only the United States, but the entire world, and that the Institute can play a small but vitally important role in educating the kind of young men who are aware of the world's problems and are dedicated to help resolve them.

There has been some feeling nationally that small colleges are an anachronism, like the corner grocery store, and that the future belongs to the multiversity. This is emphatically not a philosophy shared by Rose-Hulman. Because of their flexibility, economy, concern for the individual, emphasis on good teaching, sanity in athletics, emphasis on excellence and concern for the quality of life, schools such as Rose-Hulman will continue to educate more than their proportionate share of the nation's doctors, lawyers, engineers, teachers and scientists. Rose-Hulman is synonymous with leadership, and its primary mission during the next century will be to continue to consolidate and expand its reputation as the leading undergraduate college of science and engineering in the nation.

ECHOES

Rose-Hulman Institute of Technology
5500 Wabash Avenue
Terre Haute, Indiana 47803

