

Rose-Hulman Institute of Technology

Rose-Hulman Scholar

Institute Inklings

Student Newspaper

Fall 11-17-1967

Volume 3, Issue 8 - November 17, 1967

Institute Inklings Staff

Rose-Hulman Institute of Technology, library@rose-hulman.edu

Follow this and additional works at: https://scholar.rose-hulman.edu/institute_inklings

Recommended Citation

Institute Inklings Staff, "Volume 3, Issue 8 - November 17, 1967" (1967). *Institute Inklings*. 20.
https://scholar.rose-hulman.edu/institute_inklings/20

Disclaimer: Archived issues of the Rose-Hulman yearbook, which were compiled by students, may contain stereotyped, insensitive or inappropriate content, such as images, that reflected prejudicial attitudes of their day--attitudes that should not have been acceptable then, and which would be widely condemned by today's standards. Rose-Hulman is presenting the yearbooks as originally published because they are an archival record of a point in time. To remove offensive material now would, in essence, sanitize history by erasing the stereotypes and prejudices from historical record as if they never existed.

This Book is brought to you for free and open access by the Student Newspaper at Rose-Hulman Scholar. It has been accepted for inclusion in Institute Inklings by an authorized administrator of Rose-Hulman Scholar. For more information, please contact weir1@rose-hulman.edu.

INSTITUTE INKLINGS

VOLUME 3—NUMBER 8

ROSE POLYTECHNIC INSTITUTE TERRE HAUTE, INDIANA

NOVEMBER 17, 1967

ROSE REPRESENTED AT INDUSTRIAL SEMINAR

Thirty-two Rose Polytechnic Institute students and three members of the faculty attended an industrial seminar and plant tour in Peoria, Ill., Sunday and Monday, November 12-13.

Guests of the Caterpillar Tractor Co., the junior members of A.S.M.E. and their teachers took part in the seminar which was oriented toward engineering design.

In addition to the Rose Polytechnic students and faculty members, the two-day seminar and plant tour was attended by representatives from the University of Notre Dame, Iowa State University, the University of Missouri at Rolla and the University of Illinois.

PAPERS PRESENTED AT SCIENTIFIC MEETINGS

Papers will be and were presented at two national scientific meetings by members of the Rose Polytechnic Institute faculty and one of the graduate students.

Wednesday, November 15, Dr. Frank Freedman, assistant professor of Bioscience, and Rex Robinson, a graduate student who received his B.S. degree at Rose in 1966, presented a paper, "An Analytical Model for Transcapillary Fluid Exchange," at the 20th Annual Conference of Engineering in Medicine and Biology in Boston, Mass. The paper was based on Robinson's thesis for the M.S. degree.

Dr. John W. Rhee, associate professor of physics, will present a paper, "Density of Interplanetary Dust Between 0.72 and 1.56 A.U.,"
(Continued on Page Thirteen)

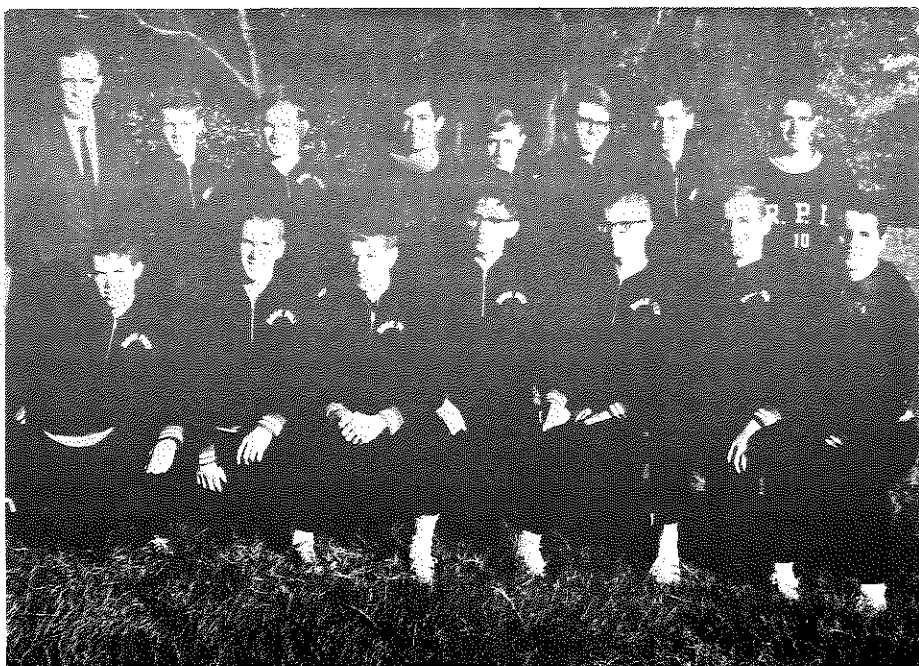
FROSH-SOPH GAMES HELD ON MONDAY

As any underclassman is well aware, there exists each year competition between the sophomore and freshman classes. Points are awarded for convocation attendance, football game attendance and attitudes toward traditional hazing. These points are added at the end of the year and the class with the lesser number of points is obliged to treat the winner to a banquet and get together. However, also added to the point standings of each class, are certain values for victories at the traditional freshman-sophomore football, basketball and tug-of-war games.

These games are the high point of frosh-soph competition and enthusiasm by both classes is overwhelming.

This year the annual freshman-sophomore games will be held in conjunction with the Rose vs. Berea varsity basketball game. Beginning at 4 P.M. the football players representing each class will square off on the varsity football field. The sophomores, captained by Jed Holt, have a slight advantage—they made the rules. However, the freshmen, led by Buck Beranch, will give a good battle. Members of Blue Key Fraternity will referee the game. Intramural football rules will be observed except for certain points such as: ALL freshmen must be wearing a beanie at all times; if a beanie falls off the penalty is five yards for illegal procedure. It will be an interesting game.

At 6 P.M. the sophomores again battle the frosh—As a preliminary to the varsity basketball game, a sophomore basketball team will face a determined freshman team,
(Continued on Page Two)



The 1967 cross country team, which finished with a 4-2 dual meet record, is pictured here. Front row left to right—Sid Stoffer, Barry Jenkins, Tom Foltz, Sam Vuchinich, Greg Shutske, Ken Culp, Larry Olson. Back row—Coach Jim Carr, Bob Childs, Larry Lynn, John Wilkinson, Mike Schubel, Jack Arney, Bob Rollings, and Ray Stoffer.

INSTITUTE INKLINGS

EDITOR: - - - - - Dennis Fritz
 ASSISTANT EDITOR: - Stephen Mitchell
 NEWS STAFF: - - - - - John Elzufon, Ed., Don Spatz, Jim Wong, George Shaver, Gerard Lameiro, Kenneth Shafer
 FEATURE STAFF: - - - John Andis, Ed., John Berry, Steve Kennedy, Stephen Walker
 SPORTS STAFF: - - - - Ken Burkhart, Ed., Rick Brandt, Ray Jirousek, Dave Jordan and Roger Ward.
 PHOTOGRAPHY STAFF: Sid Stone, Ed., Steve McLellen, Charles Wolbach, Rickey Stansifer
 BUSINESS STAFF: - - - Jay Nilsson, Mgr., Bob Combs, Jim Heppner, Don Richmond
 ADVERTISING STAFF: - Mike Morris, Mgr., Wade Scott, Pete Fowler, Gary Grebe, Rex Stockwell, Jack Uhlenbrock, Dennis Rogers, Chris Friedersdorf, Leif Petterson
 CIRCULATION STAFF: Dave Harshbarger, Mgr., Jim Houdeshell
 FACULTY ADVISORS - Col. Dougherty and Prof. Haist



REPRESENTED FOR NATIONAL ADVERTISING BY
National Educational Advertising Services
 A DIVISION OF
READER'S DIGEST SALES & SERVICES, INC.
 360 Lexington Ave., New York, N. Y. 10017



EDITORIAL

I would like to congratulate the Rose student body and administration for the fine attendance at the Convocation last Tuesday. I am sure that Dr. Harry Pratter was very impressed by the attendance. As pointed out by Dr. Larry Rose, Convocations Chairman, student support of this year's Convocation program is essential. The Convocations Committee has scheduled many speakers from nearby colleges (such as Dr. Pratter, from Indiana University) to speak on topics of current interest. These speakers are paid a nominal fee, but they should be more interesting than many of the highly paid Convocations we have had in the past.

The next Convocation will be December 5 when the Indiana State University Singers will present a program of Christmas music. Students, urge your professors to come to this Convocation so that they get a little of the Christmas spirit for finals week.

FROSH-SOPH GAMES HELD ON MONDAY

(Continued from Page One)

captained by Alex Tomonavitch. The sophomores, led by Ted Wil-ler, will still have the advantage. But the freshmen have the poten-tial. The rule concerning beanies still applies, but intramural bas-ketball rules will form the ground-work for the competition. Blue Key will again provide officials.

Spirit will continue during the

Rose - Berea game. During half-time the freshmen will battle the sophomores in the final contest—the tug-of-war. It will occur on the basketball court with Blue Key officials. Rules for this contest are pending.

All students are encouraged to

attend the games AND the varsity basketball games. **FRESHMEN SHOULD WEAR BEANIES**, and all players and spectators are ex-pected to show good sportsman-ship and spirit. All rules for the games are posted on the main hall bulletin board. If any questions arise, contact team captains or of-ficers of the sophomore class.

Also, this Saturday during half-time of the Rose-Centre football game, the freshmen will battle the sophomores as a preliminary to the Monday night contests. A three-legged race and another surprise contest are planned, and attend-ance at the final game will also be included in the competition. At any rate, the freshmen and sopho-mores will be battling each other quite frequently in the next few days and it is hoped spirit and sportsmanship will remain high. Good luck to both teams!

—Jim Brown

"An honest golfer is one who tells the 'hole' truth."—Harold S. May, Editor, The Florence (Ala.) Herald.

Chemists . . . Engineers . . . Physicists

Meet the Man from Monsanto

Nov. 20

Sign up for an interview at your placement office. This year Monsanto will have many openings for graduates at all degree levels. Fine positions are open all over the country with America's 3rd largest chemical company. And we're still growing. Sales have quadrupled in the last 10 years . . . in everything from plasticizers to farm chemicals; from nuclear sources and chemical fibers to electronic instruments. Meet the Man from Monsanto—he has the facts about a fine future.



An Equal Opportunity Employer

Engineers Scientists

(all degree levels)

Wouldn't you rather be with No. 1?
See us on campus Nov. 28 and 29.

If you want an engineering or scientific career with all the growing room in the world, we have a suggestion.

Start with Humble and you start with the company that supplies more petroleum energy than any other U.S. oil company. We're literally No. 1 — America's Leading Energy Company.

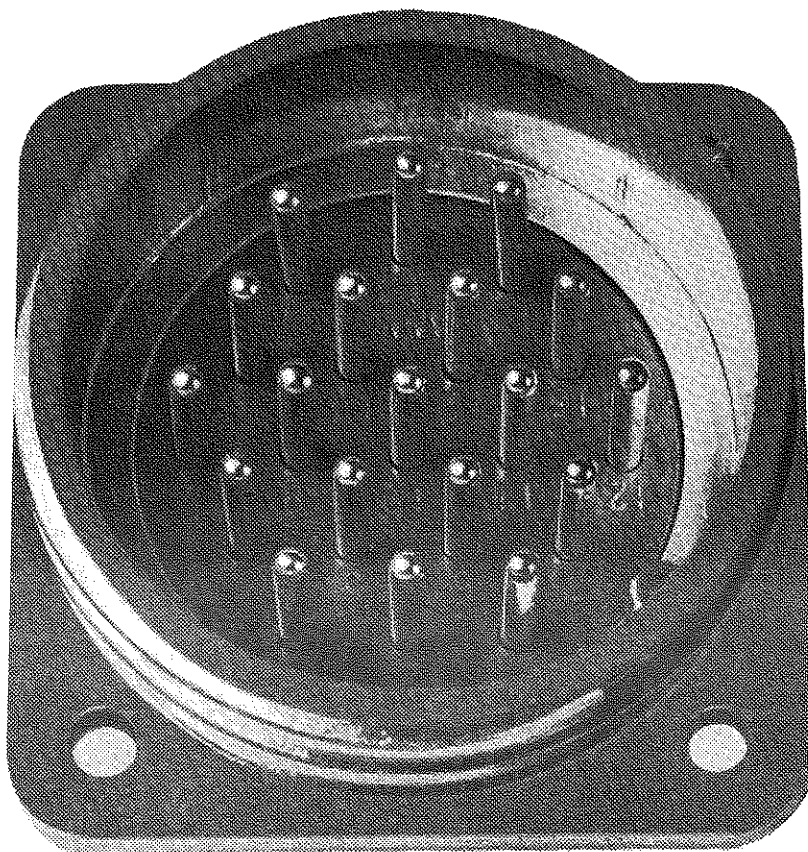
Start with Humble and you start with the principal U.S. affiliate of Standard Oil Company (New Jersey) with its 300 worldwide affiliates. So your advancement can be intercompany as well as intra-company, worldwide as well as domestic!

Look into Humble's wide-scope careers in exploration, production, transportation, manufacturing, marketing and research — and the management of all these. We have immediate openings for people in practically all disciplines and at all degree levels.

We'll stretch your capabilities. Put you on your own a little too soon. Get the best you can give. But you'll always be glad you didn't settle for anything less than No. 1. Make a date now with your placement officer for an interview.

Humble Oil & Refining Company
America's Leading Energy Company

A Plans for Progress Company and an Equal Opportunity Employer



Solid Connection.

It just makes good sense for the graduate engineer or scientist, contemplating the direction of his professional career, to make sure that he has all the information he needs about every company he is considering—that he has total input information—before he makes a connection.

If you're good. If you're *really* good. If you have learned to use the knowledge you have acquired as a starting point from which to launch new ideas, you probably know already that your talents are in demand. There is always a seller's market for intellect.

But there can be more to your future than buy and sell. Satisfaction is a commodity that cannot be exchanged.

When you are considering where you will start in the complex world of aerospace, while you are gathering input information, we

urge you to investigate the opportunity for a *satisfying* career here at the Pomona division of General Dynamics.

Here are five reasons why it would be a wise move for you now:

1. You will work side-by-side with nationally recognized engineers and scientists who are pioneering advanced concepts in missilery. Your reputation will be balanced by association.
2. Your compensation and fringe benefits will be on a par with the top in the industry.
3. You will pursue your profession in an area where living is pleasurable year 'round—one of the top vacation areas in the nation. Beaches, mountains, desert, a great city nearby, universities and colleges for advanced study, an atmosphere of growth and achievement.
4. Your ability will be applied to

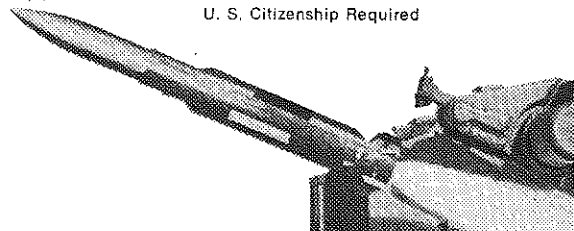
creating universally important products of engineering imagination.

5. Here at the nation's largest facility for development and manufacture of tactical guided missiles, your talents will be evaluated, recognized and rewarded.

For more information, contact your placement officer to arrange a personal on-campus interview with our representatives, or write to:
L. F. Cecchi, Manager,
Engineering Personnel,
Pomona division of
General Dynamics,
P.O. Box 2507-A,
Pomona, California 91766

GENERAL DYNAMICS *Pomona Division*

Pomona, California
An Equal Opportunity Employer
U. S. Citizenship Required



CAREERS AND OPPORTUNITIES

Mathematics has been studied by men since they learned to count. Industry and government found in about 1950 that mathematicians were valuable in solving many of their problems. Since then the growth of mathematics has been faster than almost any other field.

Within mathematics there are two main areas—the so called pure or proof type and the so called applied or do type. The math major at Rose is required to take a number of courses in each of these areas.

Over the past few years the math graduates from Rose have divided about equally between industrial jobs and graduate school. The objective of the mathematics curriculum is to prepare all math ma-

jors for both of these possibilities.

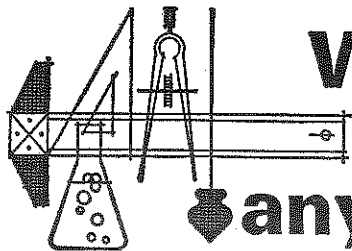
The Graduate Record Exam is an important criterion for entrance to many graduate schools and the recent graduating Rose math majors scored at the 90 percentile level on the average. A number of our graduates have gone to graduate schools to study areas of applications of mathematics, and a wide choice is possible for a student with a strong undergraduate mathematics background. For example, one of our graduates of last year is studying oceanography at MIT this year.

The math major at Rose is required to take a number of courses in some area outside of mathematics from physics, chemistry,

engineering or economics. This background will make him more valuable to the employer and more important, give him understanding of mathematics by using it.

The kinds of industrial jobs that math majors have taken are quite varied from Systems Programming Supervisor at Bell Labs to Research Scientist at Phillip Morris Research Lab. A list of current occupations of all Rose math graduates can be found by reading the Alumni Catalogue from 1961 to the present. A recent survey by the Department of Health Education and Welfare indicates that the needs for math majors will exceed that for engineers within ten years.

There are many good reasons to study mathematics but the best one is that you like mathematics.



What kind of an engineer are you, anyway?

mechanical? chemical? electrical? civil? aeronautical? (or maybe even a chemist, physicist, or mathematician?)

CHRYSLER may have a place for you on our **Product Planning and Development Staff** who set the direction of the Corporation by planning, styling, engineering and researching our future automobiles. We'll start you out on one of three Chrysler Training Programs. Whichever you qualify for. Each offers the opportunity to continue your education, either wholly or partly at company expense.

1. Two-year graduate program. Combination on-the-job and in-school training leading to a masters degree in Mechanical Engineering from the University of Michigan.
2. One-year job rotation program. Four 3-month assignments in development and design.
3. Direct placement program. Permanent assignment to a specific department.

You'll work alongside some of the top specialists in the industry. You'll receive salary and benefits commensurate with your education and ability.

And soon you'll know what kind of engineer you are.

A Chrysler engineer. The best.

CONTACT your campus placement office. Interviews to be held . . .

TUESDAY, NOVEMBER 21

OR WRITE: Highland Park Area Personnel Office,
Chrysler Corporation, P.O. Box 1118,
Detroit, Michigan 48231.

PRODUCT PLANNING & DEVELOPMENT STAFF



**CHRYSLER
CORPORATION**

AN EQUAL OPPORTUNITY EMPLOYER

Worth Talking About

"Let us develop every possible means for the people themselves to find the solutions to their problems. Let industry with its unique international capability for

unity help lead by the example of self-initiated accords. Let industry and its associations exercise the virtues of private enlightened enterprise toward closing the gaps in a natural empathy, and move all peoples closer to compatible living

within our single environment."

—Daniel Parker, chairman, The Parker Pen Co.

"Relatives looking for hand-outs seldom stay long. It's usually just a matter of touch and go."

**Engineers, Scientists, Mathematicians, Business Majors:
You can do more than you think you can.**

See your Westinghouse recruiter November 27

At Westinghouse, there are unlimited possibilities to contribute to modern civilization. In ocean sciences, defense and space, atomic energy, transportation, computer sciences, water desalting, international projects, power systems, microelectronics . . . and much more.

Only a few companies in the whole world are involved in all the physical sciences. Westinghouse is one of them. Don't sell yourself short. Get the whole picture.

You can be sure if it's Westinghouse



An equal opportunity employer

How would you fit into Du Pont's Project X?

You are the only person who can answer that question.

To do it, you should know as much as possible about the 150 new plant units Du Pont has built since the end of World War II. You'd then choose from one of the many lively fields of interest at Du Pont: design, construction, production, marketing, research and process improvement (to name just a few).

Involvement starts the day you join. There is no training period. You go into responsible work right away. Your professional development is stimulated by real problems and by opportunities to continue your academic studies under a tuition refund program.

You work in small groups where individual contributions are quickly noted and appreciated.

The work is significant, and of benefit to society. You're part of the most exciting technical environment available today and tomorrow, and facilities and associates are the best.

How could you fit in? Why not sign up for a chat with a Du Pont interviewer and find out? The coupon will also bring you more information about us.

Finally, what is Project X? We don't know yet. Could be we're waiting for you to tell us.



E. I. du Pont de Nemours & Co. (Inc.)
Nemours Building 2500-2
Wilmington, Delaware 19898

Please send me the Du Pont Magazine along with the other magazines I have checked below.

- ☐ Chemical Engineers at Du Pont
- ☐ Mechanical Engineers at Du Pont
- ☐ Engineers at Du Pont
- ☐ Du Pont and the College Graduate

Name _____

Class _____ Major _____ Degree expected _____

College _____

My address _____

City _____ State _____ Zip Code _____

FRATERNITY NEWS

TX

This was an eventful week for Theta Xi. In football TX downed Triangle 12-6 and ATO 12-0.

The Homecoming display was dismantled last Saturday and upon burning the refuse, the garage caught on fire. Three fire trucks and a soggy garage later, the fire was out—with little damage done to the structure.

Brother Waller was injured in the Triangle football game and was sent to the hospital with a bruised kidney. His condition was listed as satisfactory and he should be out of the hospital soon.

The annual Jim Kerber award was won by Brother Hursta by an

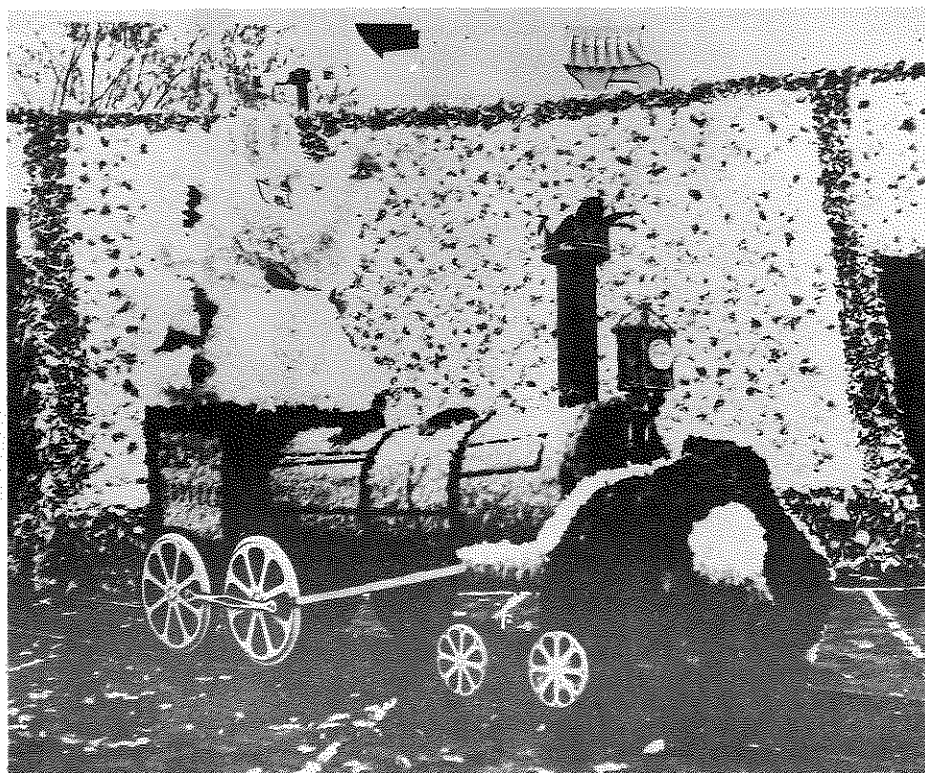
VIQUESNEY'S

OFFICE SUPPLIES

BOOKS — GIFTS — GAMES

811 Ohio St.

644 Wabash



The Locomotive from the winning Homecoming display is shown here. The winner of the Interfraternity Display competition was Alpha Tau Omega, and their theme was "Railroad Those Eagles."

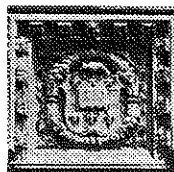
Amateur or Professional?

Earn an M.B.A. at Washington University

The Master of Business Administration (MBA) is the professional degree in management education. If you're planning for a career in business — if your goal is to be a real professional — you'll want to consider an M.B.A. at Washington University.

The Graduate School of Business offers a nationally recognized M.B.A. program designed especially to meet the needs of graduates of non-business undergraduate programs such as engineering and liberal arts.

Scholarships and assistantships are available. Send for an illustrated brochure and earn your credentials as a professional in management.



Name _____

Address _____

Send to: Graduate School of Business /
Washington University / St. Louis
Missouri 63130

overwhelming support of the chapter. This award, of which he was so highly deserving, shows an outstanding characteristic which is lacking in many individuals of our fraternity but is apparently quite evident in Brother Hursta's personality. We hope future recipients will carry on the tradition which Brother Hursta has so favorably exemplified.

To all teachers who missed Ed Izumi for Monday classes, he blew up his transmission in St. Louis and was unable to attend classes on Monday.

Brother Ray was lavaliered and Brothers Smith and Hanley were pinned. Congratulations!

LAMBDA CHI

The Lambda Chi Alpha major league team finished the season successfully with a hotly contested series with Sigma Nu. The Lambda Chi majors, quarterbacked by senior Bob Gravitt, finished off Sigma Nu on Tuesday night by winning 13-7. Congratulations to all of the men who made this season another big one for Lambda Chi. With this win went the IM and IF football championships.

(Continued on Page Eleven)

What the interviewers won't tell you about General Electric.

They won't tell you about all the job opportunities we have for college graduates — engineers, science, business and liberal arts majors. Not that they wouldn't like to. It's just that there are too many jobs and too little time. In a half-hour interview our man would barely have time to outline the scope and diversity of the opportunities we offer. That's why we published a brochure called "Starting Points at General Electric." In plain language

it will tell you exactly how and where a person with your qualifications can start a career with General Electric. Pick up a copy at your Placement Office. Then arrange for a productive session with our interviewer. He'll be on your campus soon.

GENERAL  ELECTRIC

An equal opportunity employer

Cagers Open Against Berea

Next Monday, November 20, marks the opening of another basketball season at Rose Poly. The Engineer's foe in the first game will be Berea College of Kentucky. Berea was defeated twice by Rose last year, and will be out for revenge early this season.

Coach Mutchner will have veteran forwards Jim Pettee and Jerry Wones, center George Shaver, and guards Dave Yeager and Don Ings starting.

The team is ready. All they need is your support. Game time will be eight o'clock.

ENGINEERS MEET DEFEAT

Suffering from an apparent let-down after their 41-7 Homecoming triumph, Rose's Engineers dropped their fifth contest of the year to Culver-Stockton by a 34-14 margin on a slippery field last Saturday. The Engineers' record now stands at 1-5-2 with only tomorrow's opponent, Centre, remaining on the schedule.

Culver-Stockton scored in each of the first two periods on long pass plays as Keith Alexander hauled in a 47-yard TD toss and Bob Vaschinko scored on a 37-yard pass making the halftime score 14-0.

Alexander added another score in the third stanza on a seven-yard aerial giving Culver-Stockton a 20-0 advantage at the onset of the fourth stanza.

Rose had driven inside the opponent's ten-yard stripe on two occasions but had failed to score until frosh tackle Ron Randall blocked a Culver-Stockton punt and churned 34 yards for the touchdown. The Engineers threatened Culver-Stockton's lead later in the final stanza when Charlie Hills and Pete Hodapp combined for a 51-yard TD pass, but Culver-Stockton met the challenge and added two more scores of their own to wrap up the 34-14 victory.

Culver-Stockton's passing attack of Williams to Alexander made the difference as Culver-Stockton netted 300 yards passing compared to Rose's 139 yards while Alexander scored on three touchdown passes, two from Williams.

WARREN BEATTY FAYE DUNAWAY

*They're
young...
they're
in love*



...and they kill people.

BONNIE AND CLYDE

CO-STARRING
MICHAEL J. POLLARD·GENE HACKMAN·ESTELLE PARSONS
Written by DAVID NEWMAN and ROBERT BENTON Music by Charles Strouse Produced by WARREN BEATTY Directed by ARTHUR PENN
TECHNICOLOR® FROM WARNER BROS.·SEVEN ARTS W

NOW SHOWING

GRAND

Hillman's

Downtown
Meadows Center

the lifetime Christmas gift



Ω
OMEGA

No watch is more widely acclaimed or highly esteemed than Omega. Built for a lifetime of proud possession. Omega is one of the world's most dependable watches.

AS
LOW \$7500
AS
PAY \$2 A WEEK

Terre Haute's authorized sales and service dealers.

YOU CAN CHARGE IT AT *Hillman*

START YOUR PAYMENTS IN JANUARY, 1968

LAMBDA CHI

(Continued from Page Eight)

Bob Stormont, head of the fund raising committee for the annual Lambda Chi Christmas party, a charity venture for needy children in Terre Haute, has set the date for the party as December 15, the last day of finals for the fall quarter.

Lambda Chis will be attending their traditional fall dance, the Red Lion, on Saturday, November 18. The Spyders will provide the music.

Also on Saturday, Lambda Chis will begin work on the Shrine float committee chairman Jim Houdeshell announced. The float is be-

ing constructed for the Shriner's parade for crippled children.

Captains have been elected for major league teams in winter Intramural sports. The captain of the basketball team is Rich McClanahan, and the captain of the volleyball team is Dean Fiess.

TRIANGLE

On November 12, six members of the Rose Tech Colony were initiated into TRIANGLE. They joined the thirteen brothers who were initiated in May at Purdue. The initiation was performed by members of the Ohio State Chapter at their house in Columbus. The six new brothers are Melvin

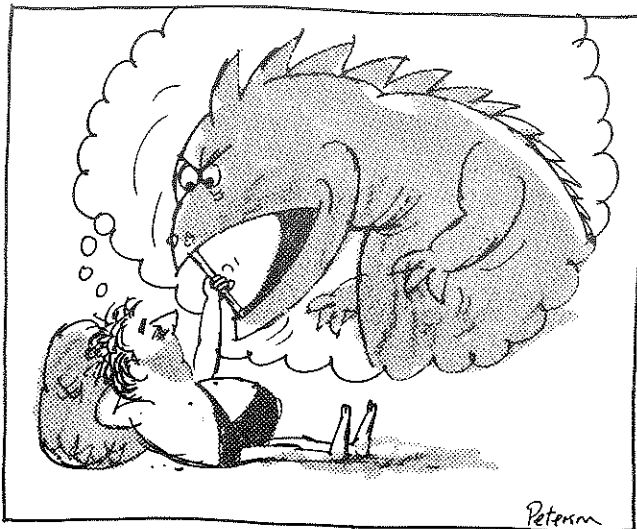
Bartlett, Rodger Casey, Tom Compton, Steve Flannigan, Harold Schroer and Russell Zimmerman. All six are seniors. Special guests present were J. Merrill Weed, National President, and E. Alan Bischoff, National Director of Alumni Affairs.

This coming Sunday, November 19, the colony will initiate three new members. They are Fred Kinnan, a sophomore EE; Prof. Kenneth Carr, and Dr. Charles Rogers.

Recently members of the colony met on campus with Brother Ed Larson, chairman of the TRIANGLE Building and Loan Fund, to discuss financing. This discussion is being continued over Thanksgiving vacation with the full board of trustees. Representing the colony at the National Convention being held over Thanksgiving Vacation in Minneapolis, Minnesota, will be Brothers Randy Drew, Mike Nicksic and Gar Vana.

TRIANGLE was very happy to once again be first in fraternity scholarship at Rose. Our jubilant scholarship officer Joe Billman has been encouraging us to keep up the good work.

Recently Brother Bob Casey pinned Julia Hayes, a senior at ISU, and Brother Mike Jackson lavaliered Sandy Erwin, also a senior at ISU. The brothers extend best wishes to those four members who have bought lavaliers and are about to be lavaliered.



THINK TOUGH!

Zip Zoldot can't stand himself. Years ago, when he was in college, he procrastinated away the opportunity to start a life insurance program. Today, at 41, he's very much aware of the many benefits he passed up. You see, the earlier you start life insurance, the lower your premium. And the policy begins to build cash values while you're younger. Also, if you wait, there is the risk of becoming physically ineligible for it. Or, you might choose an occupation that makes you ineligible. Take a tip from Zip: be tough with yourself about taking out life insurance. Now is the best time!

JIM GIBSON

SPECIAL AGENT NEW YORK LIFE
INSURANCE COMPANY
Telephone Number

232-4912

NEW COMPUTER ABLE TO CONVERT SPOKEN WORD

Sylvania Electric Products, Inc., a division of General Telephone and Electronics Corp., has developed an experimental ultra-high-speed computer that can convert speech into digital information for other computers as fast as the words are spoken.

Up until now, conversion of the spoken word into the number-language used by computers has required specially designed analog computers, and there has been a time lag between the time of speech and the actual conversion to computer language.

The development was made by Sylvania's Applied Research Laboratory in Waltham, Mass. The laboratory normally turns its de-

(Continued on Page Thirteen)

INTRAMURAL NEWS

With the playing of the Lambda Chi-Sigma Nu game last Tuesday, all significant action in the Intramural and Interfraternity Leagues came to a halt. The Lambda Chi-Sigma Nu game actually was played twice, when the first game was protested by Sigma Nu. Again on Sunday, the game was played. This time it was for the IF championship, rather than for the IM championship, which the first game had meant. Again it was protested—this time by Lambda Chi. The match game was rescheduled for last Tuesday. This game decided all, and Lambda Chi won. Lambda Chi finished the season with an 8-0 IM mark. Sigma Nu finished at 7-1. Final IF standings are not yet available.

SCORES

MAJOR

Winner		Loser
SN13	SP 6
TX12	ATO 6
LCA25	TRI 0
SP 6	TX 0
ABCD 7	BSB 0
TX12	TRI 6
SP 0	ATO 0

(ATO won)

LCA		ABCD
	(LCA won-forfeit)	
TX		OC
	(TX won-forfeit)	
ATO		OC
	(ATO won-forfeit)	
SN 7	LCA13

MINOR

Winner		Loser
OC		BSB

(OC won-forfeit)

STANDINGS

MAJOR

Team	Record	Team	Record
LCA8-0	TRI2-6
SN7-1	BSB1-7
ATO5-3		
SP5-3		
TX5-3		
ABCD3-5		

MINOR

Team	Record	Team	Record
ABCD-2	...7-0	ABCD-1	...3-4
ATO6-1	SP2-5
TX4-2	BSB1-5
LCA4-3	OC0-6

"Unhappy is the head that always wears a frown."

CAREERS IN STEEL



Our representative will be on campus

DECEMBER 1

to interview candidates for Bethlehem's 1968 Loop Course training program.

THE LOOP COURSE trains selected college graduates with management potential for careers with Bethlehem Steel. The Course begins in early July and consists of three phases: (1) orientation at our headquarters in Bethlehem, Pa.; (2) specialized training in the activity or field for which the Looper was selected; and (3) on-the-job training which prepares him for more important responsibilities.

OPPORTUNITIES are available for men interested in steel plant operations, sales, research, mining, accounting, finance, and other activities.

DEGREES required are mechanical, metallurgical, electrical, chemical, industrial, civil, mining, and other engineering specialties; also chemistry, physics, mathematics, business administration, and liberal arts.

If you expect to be graduated before July, 1968, and would like to discuss your career interests with a Bethlehem representative, see your placement officer to arrange for an interview appointment—and be sure to pick up a copy of our booklet "Careers with Bethlehem Steel and the Loop Course." Further information can be obtained by writing to our Manager of Personnel, Bethlehem, Pa. 18016.

BETHLEHEM STEEL

*An Equal Opportunity Employer
in the Plans for Progress Program*

ROSE CAPTURES NINTH IN LITTLE STATE

The Rose cross country team put the finishing touches on a successful season by coming in a strong ninth in the Little State Cross Country Meet, November 3, at Indianapolis Riverside Golf Course.

The Engineers' ninth place finish was a fine showing considering the competition. Rose was one of the smallest schools competing. Some of the other schools included were Taylor, Valparaiso, Vincennes, Indiana Central, Depauw and Butler.

The team's best effort was turned in by Bob Childs who placed 34th with a fine time of 21 minutes, 34 seconds. Following closely behind were Larry Lynn and Sam Vuchinich who finished 36th and 38th respectively. Completing the scoring for Rose were

Bob Rollings, Ken Culp, Tom Foltz and Greg Shutske. Every returning member of the team improved on his time for last year's Little State Meet.

Coach Jim Carr was very pleased with his team's showing at the Little State Meet and throughout the season. The boys worked hard all season and finished with four victories and only two defeats in dual meet competition.

The depth of the team was better with the improved showings of Bob Rollings, Sam Vuchinich and Larry Olson. Freshman Greg Shutske also proved to be a pleasant surprise.

(Continued on Page Fourteen)

PAPERS PRESENTED

(Continued from Page One)

Wednesday, December 6, at the 125th meeting of the American Astronomical Society. The meeting will be at the University of Pennsylvania in Philadelphia.

NEW COMPUTER

(Continued from Page Eleven)

velopments over to other divisions of the company for commercial application.

One possible use of the new development would be to permit oral instructions to be given directly by telephone to a distant computer through the new high-speed computer converter. Sylvania's new computer performs in one three-millionth of a second which is about five times faster than previous equipment used for the same purpose.

In addition to the human voice, the new computer can also convert other sounds to computer language, such as evaluating the sonar signals U.S. Navy ships use.

"By the way, did you ever notice that people who have no brains make up for it with oversized mouths?"—C. U. Weakley, Pennsburg (Pa.) Town and Country.

ENGINEERING OPPORTUNITIES

for Seniors and Graduates in MECHANICAL, AERONAUTICAL, ELECTRICAL, CHEMICAL, CIVIL, MARINE, INDUSTRIAL ENGINEERING, PHYSICS, CHEMISTRY, METALLURGY, CERAMICS, MATHEMATICS, STATISTICS, COMPUTER SCIENCE, ENGINEERING SCIENCE, ENGINEERING MECHANICS

CAMPUS INTERVIEWS

WEDNESDAY, NOV. 29

Appointments should be made in advance through your College Placement Office

Pratt & Whitney Aircraft

U A
DIVISION OF UNITED AIRCRAFT CORP.

An Equal Opportunity Employer

SPECIALISTS IN POWER... POWER FOR PROPULSION—POWER FOR AUXILIARY SYSTEMS.
CURRENT UTILIZATIONS INCLUDE AIRCRAFT, MISSILES, SPACE VEHICLES, MARINE AND INDUSTRIAL APPLICATIONS.

SPORTS

ON THE "IN" SIDE

by Roger Ward

Although the season in general has been disappointing (a win against Centre tomorrow could definitely alter this feeling), we still managed to have fun. Since this is a final "inside" article for this season, I proudly present:

END OF THE SEASON

CLEAN-UP

—Henry "Cat" Balough for his **GENEROSITY** in issuing new socks, jocks, towels, soap, etc., has been voted unanimously by the team for the "Scrooge of the Year Award."

—In light of Charlie Johnson's accomplishments as "The Wrecker," consideration has been given to outlaw him from practice next year in order to save us from his inadvertent wrath.

Jose Ibanez without a doubt has been irritated by **EVERY-ONE** in the world.

—Besides having an endless storehouse of energy for after practice sprint and drill session, Coach Kelly can also fake out a team. Last Thursday when practice was over, as usual, Coach Martin says to the team, "O.K., follow Coach Kelly," (which has meant throughout the season for us to line up for sprints directed by Coach Kelly's whistle); but instead of standing in front of us, he walked unnoticed towards the fieldhouse. Lined up and ready for his whistle, we discovered he was gone. Being very bewildered and **DISAPPOINTED** that he wasn't there, we remembered what Coach Martin had said. Spotting Coach Kelly, we then ran into the locker room. The joke was on us—the coaches had planned it to happen that way.

Coaches are human once in a while.

—Our trainer, Til Panaranto, armed with his new cure-all, the Black Box (an electro-shock treatment device), is being sent to the "Torture Technics Convention." Knowing that he's a sure bet to take the first place prize money, we are eagerly sponsoring his trip. —AMEN.

TOMORROW--- CENTRE

Centre will help Rose close its 1967-68 football season here tomorrow afternoon. Centre is rated by Coach Martin to be the best team Rose has on its schedule, and their tie for the conference championship and their victories over

Washington U. of St. Louis and Hanover by 36-20 and 27-14 counts respectively lend great support to this comment.

For seven Rose seniors, tomorrow's contest will mark their last game as Engineers. These are: Jerry Novotny, Fred Valanti, Steve Mueller, Mike Mefford, Dennis Fritz, Pete Hodapp and John Shambach. Hopefully these seniors will end their Rose football careers with a victory, but it will be a hard earned one, indeed.

ROSE CAPTURES NINTH IN LITTLE STATE

(Continued from Page Thirteen)

Coach Carr, looking ahead to next year, must find replacements for graduating seniors Ken Culp and Tom Foltz in order to maintain the team's fine record.

Congratulations to Coach Carr and the cross country team for a fine season!

Chemists . . . Engineers . . . Physicists

Meet the Man from Monsanto

Nov. 20

Sign up for an interview at your placement office.

This year Monsanto will have many openings for graduates at all degree levels. Fine positions are open all over the country with America's 3rd largest chemical company. And we're still growing. Sales have quadrupled in the last 10 years . . . in everything from plasticizers to farm chemicals; from nuclear sources and chemical fibers to electronic instruments. Meet the Man from Monsanto—he has the facts about a fine future.



An Equal Opportunity Employer

STAMP IT!

IT'S THE RAGE

REGULAR MODEL

ANY \$2

3 LINE TEXT

The finest INDESTRUCTIBLE METAL POCKET RUBBER STAMP. 1/2" x 2".

Send check or money order. Be sure to include your Zip Code. No postage or handling charges. Add sales tax.

Prompt shipment. Satisfaction Guaranteed

THE MOPP CO.

P. O. Box 18623 Lenox Square Station ATLANTA, GA., 30326